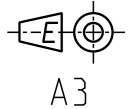


Dessa Zeichnung darf weder ganz noch teilweise ohne unsere ausdrückliche Genehmigung kopiert oder auf andere Weise vervielfältigt werden. Alle Rechte vorbehalten.

Denna handling får ej utan vårt medgivande delges annan. Kopieras eller eljest obehörigen användas. Övertryckelse härvid beivras med stöd av gällande lag. This document must not be copied, either completely or in part, without permission. Any infringement will have legal consequences.

Denna handling får ej utan vårt medgivande delges annan. Kopieras eller eljest obehörigen användas. Övertryckelse härvid beivras med stöd av gällande lag. This document must not be copied, either completely or in part, without permission. Any infringement will have legal consequences.



A3

Ritning nr./Drawing No./Zeichnung nr.
50_710_0606
Utg./Issue/Sta.
A

Product No : 14_710_0606

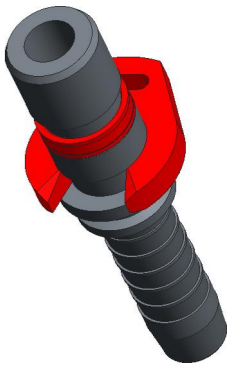
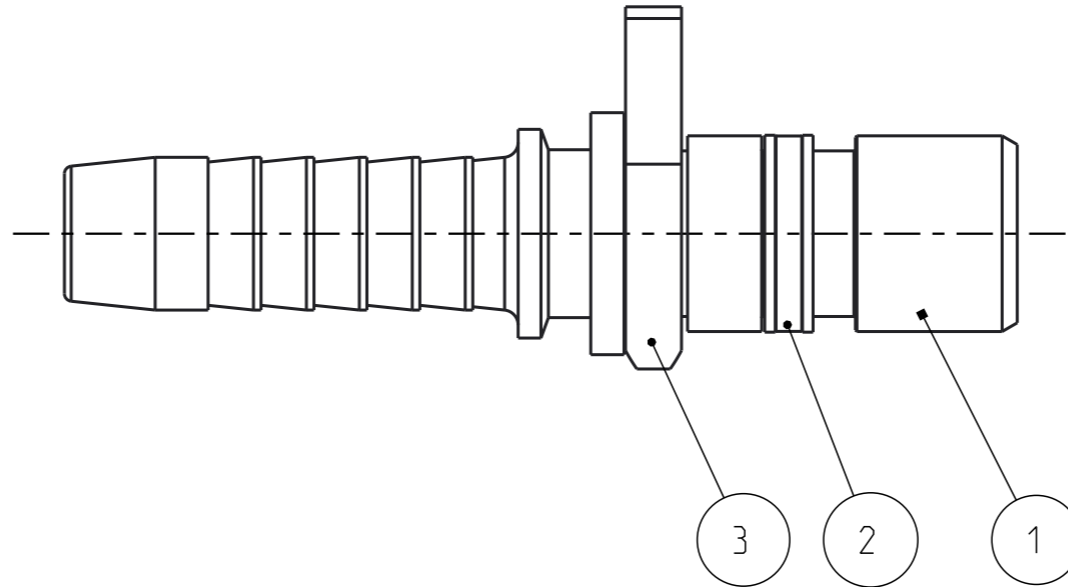
Maximum working pressure: 350 bar
Minimum burst pressure: 1400 bar

Surface treatment: Yellow zinc chromate plated

Temperature range: -30 °C - +100 °C

Nominal hole diameter: Ø7 mm

Connection: Hose 3/8" R1/R2 (10.1 mm)



1:1

| Detalj Item | Antal Quant. | Benämning Description | Material Material |
|-------------|--------------|-----------------------|-----------------------|
| 3 | 1 | Assembly stop | POM |
| 2 | 1 | Release ring | POM |
| 1 | 1 | Nipple body | Hardn. steel, FeZn5 c |

| | | | | | | | | | |
|---|-----------------------------------|------------------|-------------------------------------|----|---------------------------------------|---|--------------------------------|----------------------------|-----------------------|
| Cejn Std. blad Cejn Std. spec. Cejn Std. Blatt | ① | ② | ③ | ④ | ⑤ | ⑥ | ÄM nr. Alt. no. Alt. no. | 4627 | |
| Behandling Treatment Behandlung | | | | | | | | Anm. - Rem. - Bem. - | |
| Material Material Werkstoff | Tillstånd Condition Zustand | | | | | Ämnesritning Blank dwg. Hergestellt aus | | | |
| Skarpa kanter brytes 0.05-0.2 Sharp edges to be burred 0.05-0.2 Keine scharfe kanten erlaubt 0.05-0.2 gebrochen/gerundet | Skala Scale Massstab | - | Ritad Drawn Bearb. | PH | Kontr. Checked Geprüft. | JE | Godk. Appr. Freigabe | MAH | Dat. Date Datum |
| Ej toleranssatta mått ent. Unless otherwise prescribed, tolerances acc. Freimass toleranzen nach | | | Produkt nr./Product No./Produkt nr. | | | | | | |
| CEJN | | Assembly drawing | | | Ritning nr./Drawing No./Zeichnung nr. | | 50_710_0606 | | Utg./Issue/Sta. A |