

Throttle Valve with Check Series ZRD (Denison)

Characteristics

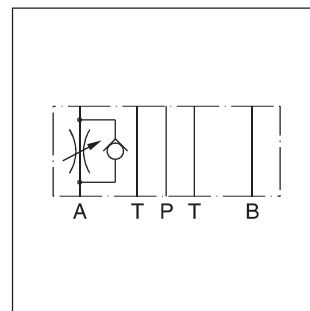
Throttle check valves series ZRD are designed for maximum flow rates.

The throttle check function can be located in port A or B as well as in A + B. Meter-in or meter-out functionality can be selected by model code.

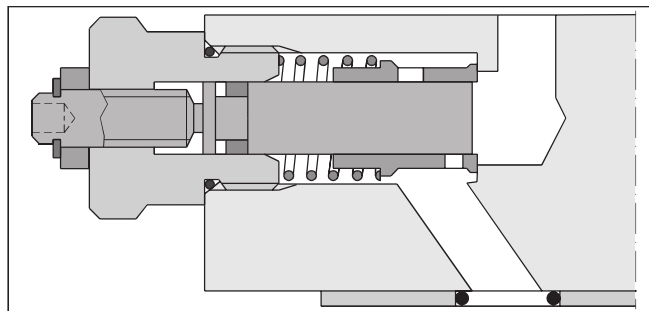
A low flow / high resolution version in NG06 for sensitive shifting time adjustment of pilot operated directional control valves is available on request.



ZRD-ABZ01



ZRD-AA02



ZRD-AA02

Features

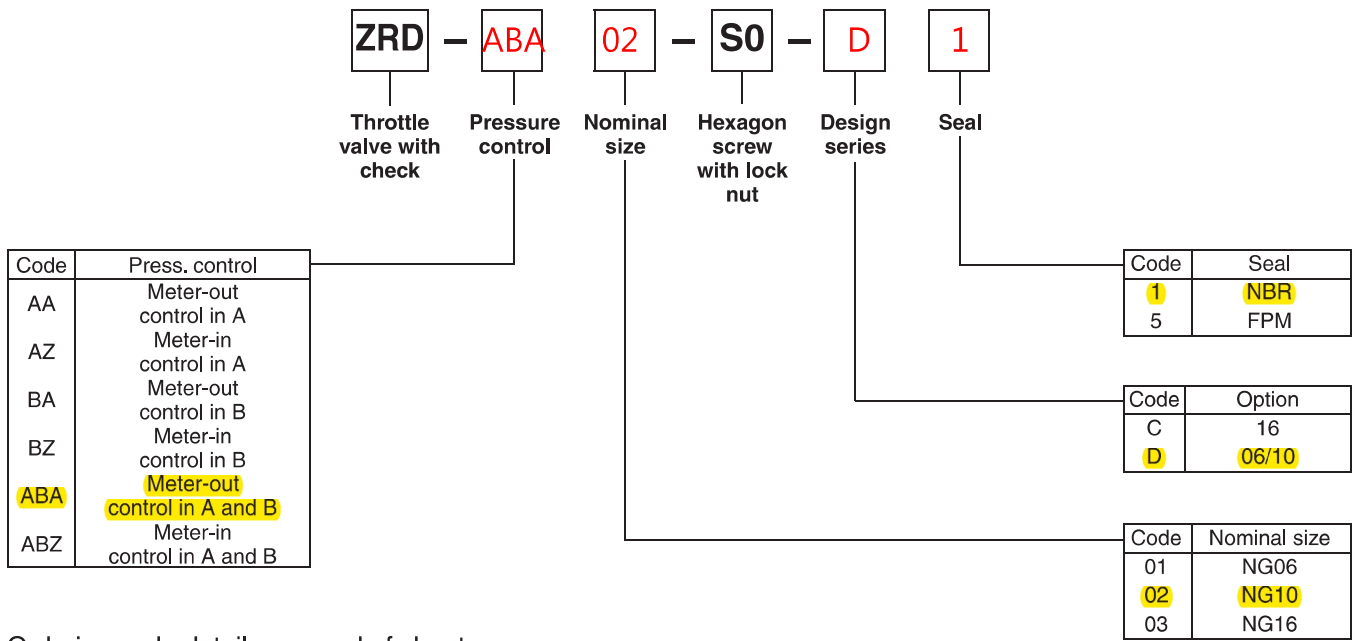
- High flow capacity
- Various functional arrangements
- Sizes
 - ZRD01 - NG06 / CETOP3
 - **ZRD02 - NG10 / CETOP5**
 - ZRD03 - NG16 / CETOP7

Technical data

General		06	10	16
Size				
Mounting interface		DIN 24340 A6 ISO 4401 NFPA D03	DIN 24340 A10 ISO 4401 NFPA D05	DIN 24340 A16 ISO 4401 NFPA D08
Mounting position		CETOP RP 121 unrestricted		
Ambient temperature	[°C]	-20...+50		
Weight	1 cartridge [kg]	1.2	2.8	7.4
	2 cartridges [kg]	1.3	2.9	7.7
Hydraulic				
Max. operating pressure	[bar]	350	315	350
Nominal flow	[cSt]/[l/min]	80	160	260
Leakage	[cSt]/[l/min]	0.1...0.2 (at closed throttle)	0.1...0.2 (at closed throttle)	0.3...0.5 (at closed throttle)
Opening pressure	[bar]	0.7	0.7	0.8
Fluid		Hydraulic oil as per DIN 51524...525		
Fluid temperature	[°C]	-20...+80		
Viscosity permitted	[cSt]/[mm²/s]	10...650		
Viscosity recommended	[cSt]/[mm²/s]	30		
Filtration		ISO 4406 (1999) 18/16/13 (acc. NAS 1638: 7)		

Throttle Valve with Check Series ZRD (Denison)

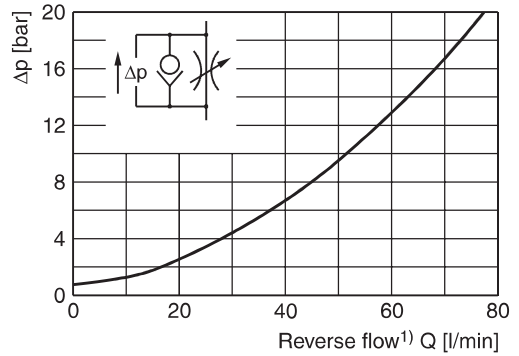
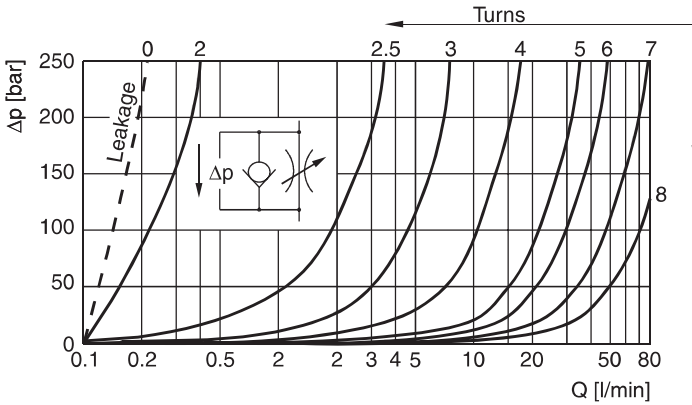
Ordering Code



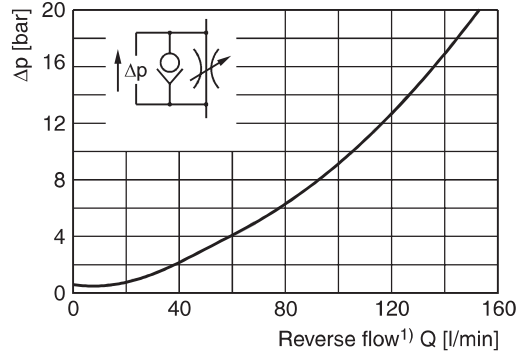
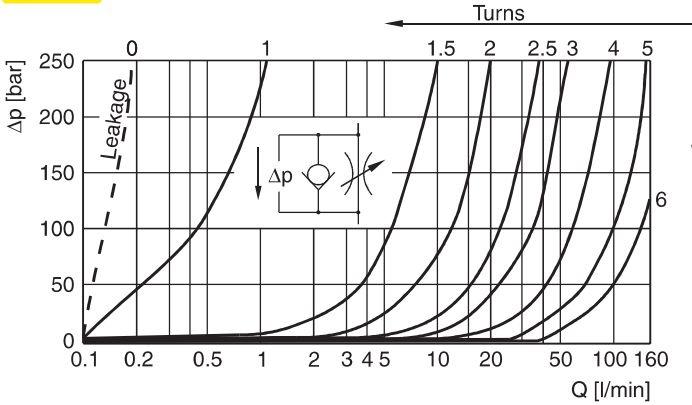
Ordering code details see end of chapter.

p/Q performance curves

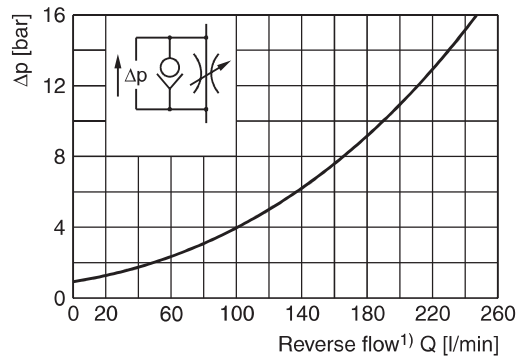
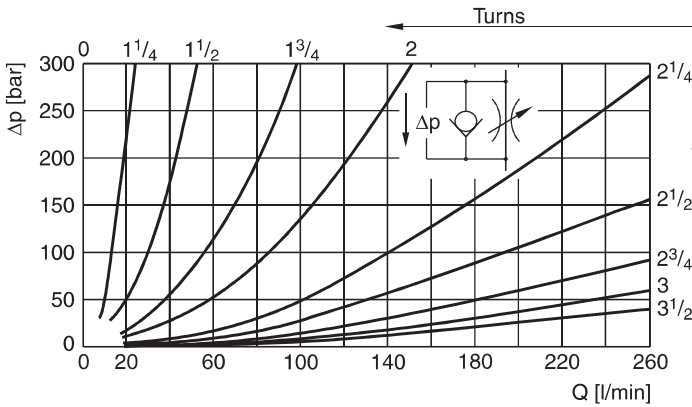
ZRD*01



ZRD*02



ZRD*03

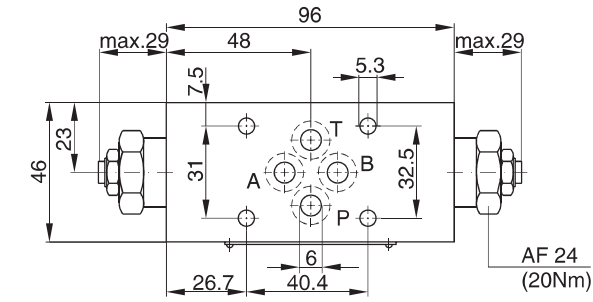


¹⁾ Throttle closed

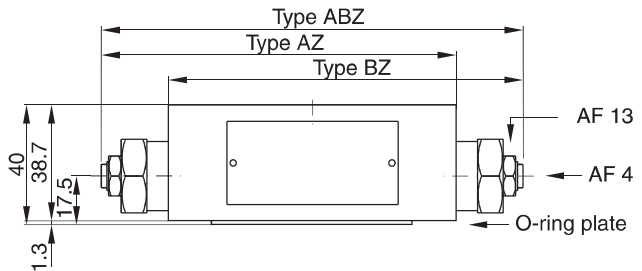
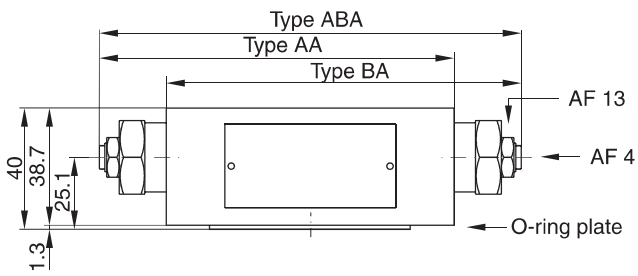
All characteristic curves measured with HLP46 at 50°C.

Dimensions

ZRD*01

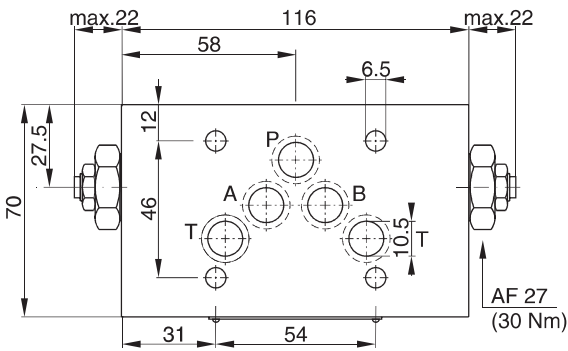


Seal kit	
Seal	Order code
1	098-91096-0
5	098-91097-0
Complete cartridge	
Order code 098-91119-0	
O-ring plate	
Order code S26-27553-0	

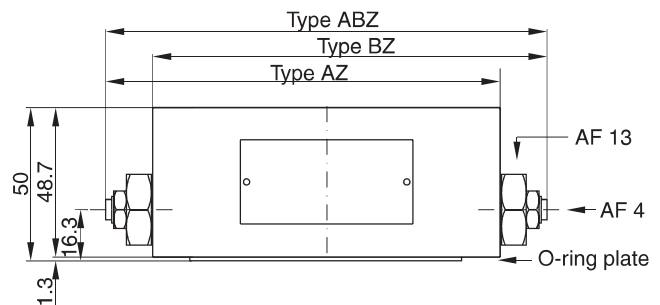
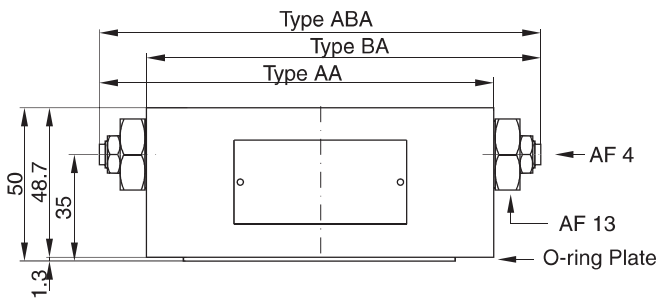


7

ZRD*02

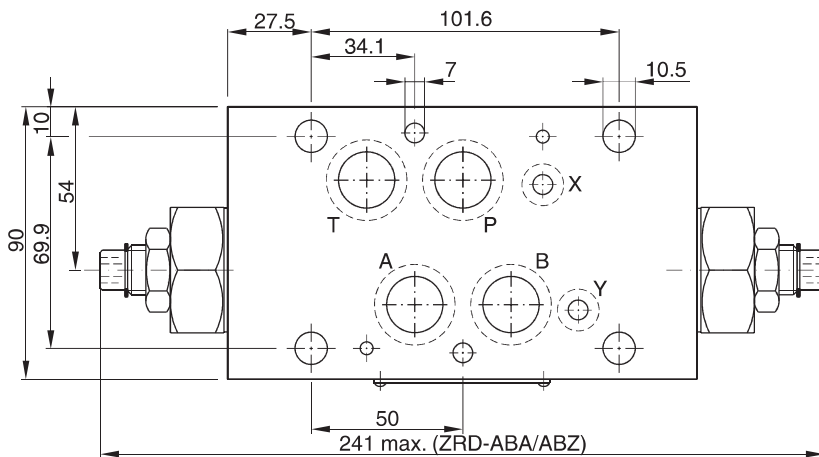


Seal kit	
Seal	Order code
1	098-91098-0
5	098-91099-0
Complete cartridge	
Order code 098-91120-0	
O-ring plate	
Order code S16-85742-0	

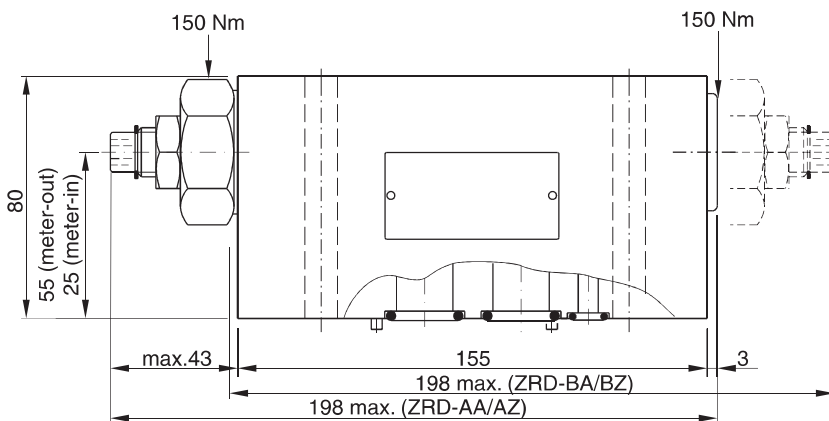


Dimensions

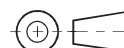
ZRD*03



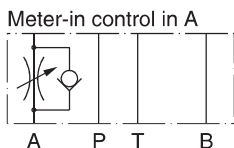
Seal kit	
Seal	Order code
1	098-91442-0
5	098-91443-0
Complete cartridge	
Order code	
098-91441-0	



7

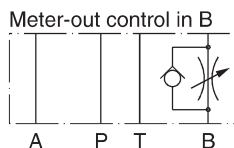


ZRD*01



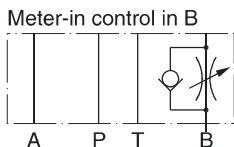
Series
ZRD-AZ01-S0-D1

Order No.
098-91056-0



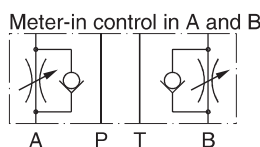
Series
ZRD-BA01-S0-D1

Order No.
098-91013-0



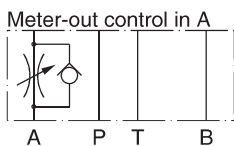
Series
ZRD-BZ01-S0-D1

Order No.
098-91057-0



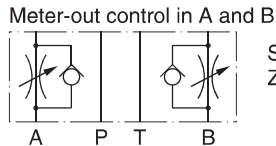
Series
ZRD-ABZ01-S0-D1

Order No.
098-91058-0



Series
ZRD-AA01-S0-D1

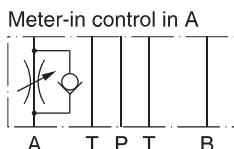
Order No.
098-91012-0



Series
ZRD-ABA01-S0-D1

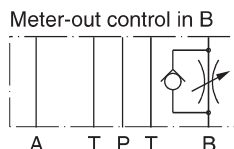
Order No.
098-91014-0

ZRD*02



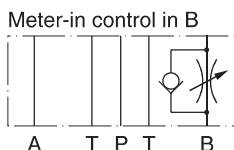
Series
ZRD-AZ02-S0-D1

Order No.
098-91059-0



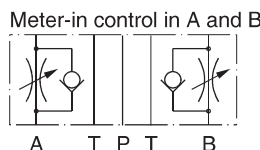
Series
ZRD-BA02-S0-D1

Order no.
098-91016-0



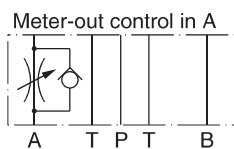
Series
ZRD-BZ02-S0-D1

Order No.
098-91060-0



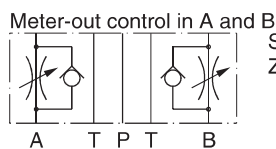
Series
ZRD-ABZ02-S0-D1

Order no.
098-91061-0



Series
ZRD-AA02-S0-D1

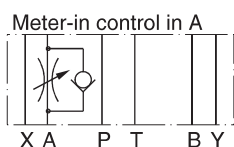
Order no.
098-91015-0



Series
ZRD-ABA02-S0-D1

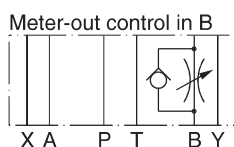
Order no.
098-91017-0

ZRD*03



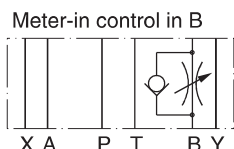
Series
ZRD-AZ03-S0-C1

Order no.
098-91422-0



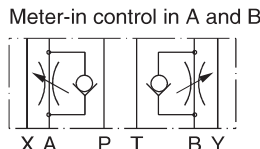
Series
ZRD-BA03-S0-C1

Order no.
098-91423-0



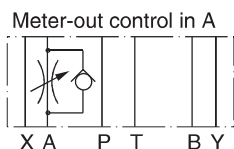
Series
ZRD-BZ03-S0-C1

Order no.
098-91424-0



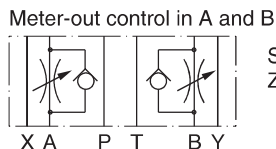
Series
ZRD-ABZ03-S0-C1

Order no.
098-91421-0



Series
ZRD-AA03-S0-C1

Order no.
098-91419-0



Series
ZRD-ABA03-S0-C1

Order no.
098-91420-0

7

