

# CODIFICATION OF MOTORS

CODIFICATION

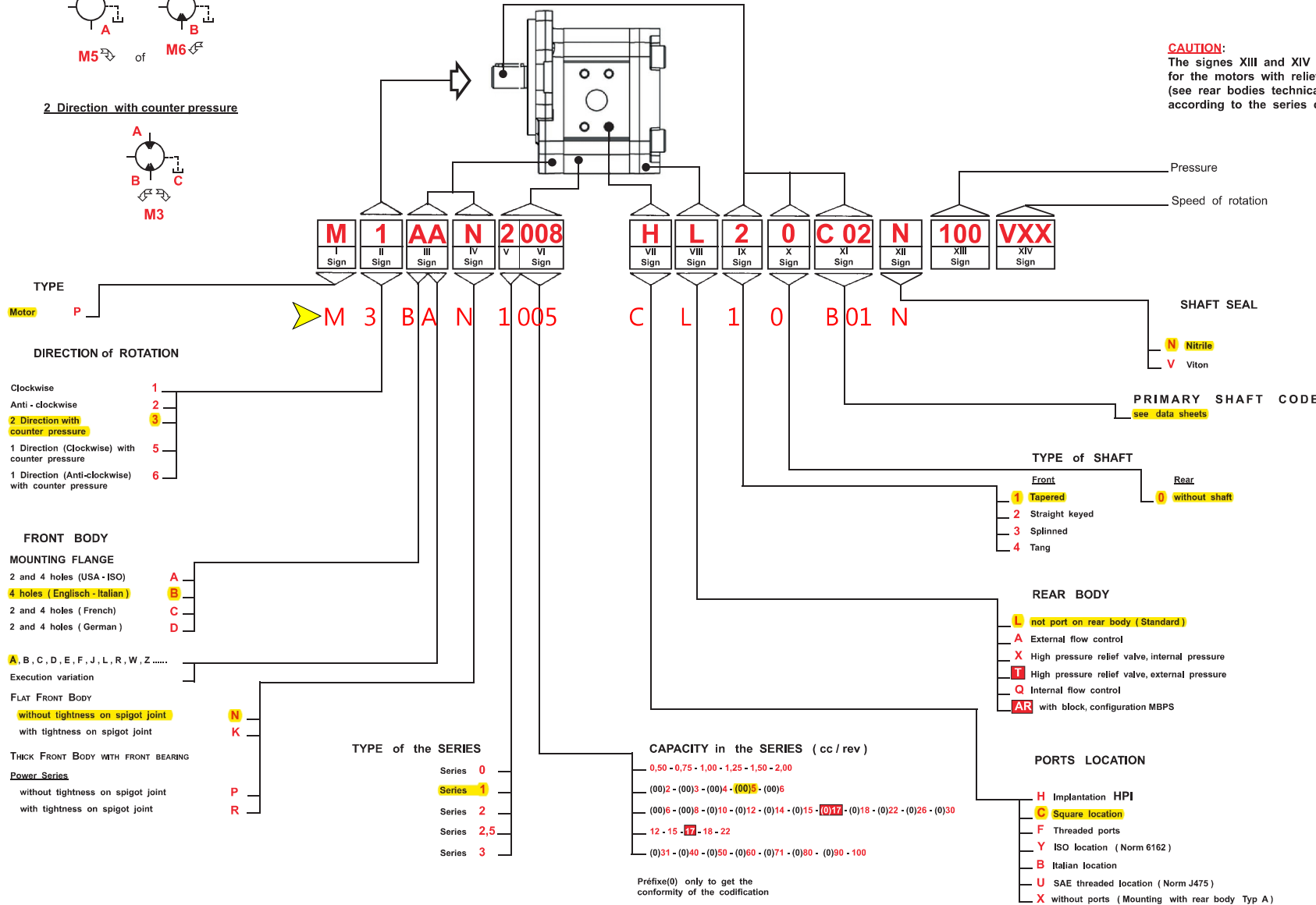
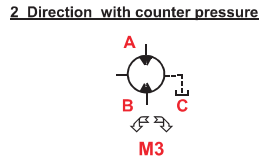
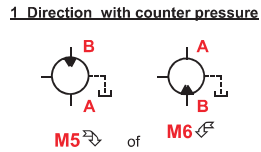
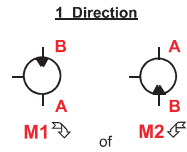
CODIFICATION

BEZEICHNUNG

BEZEICHNUNG

CODIFICATION

CODIFICATION



**CAUTION:**  
The signes XIII and XIV are valid only for the motors with relief valve. (see rear bodies technical data sheet according to the series concerned)

Pressure  
Speed of rotation

SHAFT SEAL  
N Nitrile  
V Viton

PRIMARY SHAFT CODE  
see data sheets

TYPE of SHAFT  
Front  
1 Tapered  
2 Straight keyed  
3 Splinned  
4 Tang  
Rear  
0 without shaft

REAR BODY  
L not port on rear body (Standard)  
A External flow control  
X High pressure relief valve, internal pressure  
T High pressure relief valve, external pressure  
Q Internal flow control  
AR with block, configuration MBPS

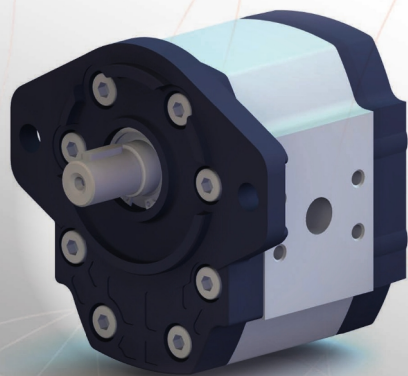
PORTS LOCATION  
H Implantation HPI  
C Square location  
F Threaded ports  
Y ISO location ( Norm 6162)  
B Italian location  
U SAE threaded location ( Norm J475)  
X without ports ( Mounting with rear body Typ A)

Non Standard Product, Contact us

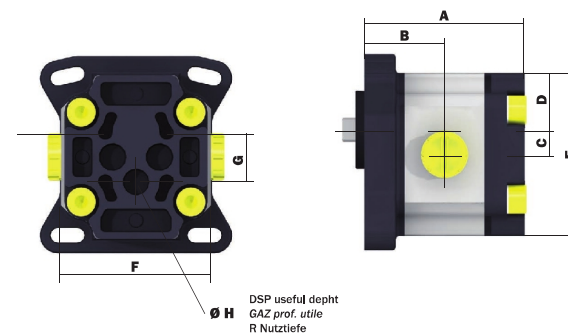
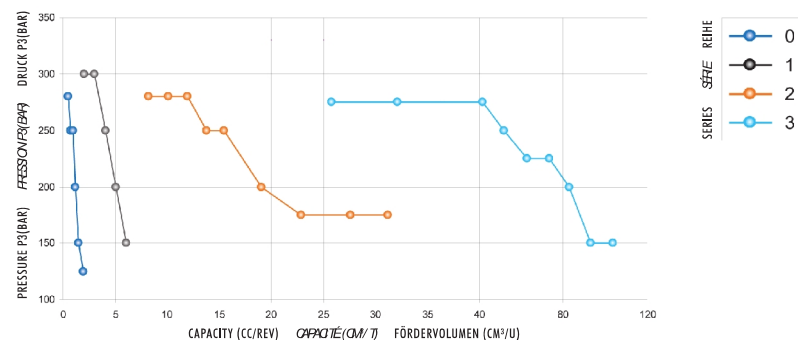
# HYDRAULIC GEAR MOTORS

## MOTEURS HYDRAULIQUES À ENGRENAGE

### HYDRAULIK ZAHNRADMOTOREN



THE MOST COMPLETE RANGE AVAILABLE ON THE MARKET WITH EXCEPTIONAL PERFORMANCES  
 LA GAMME LA PLUS COMPLÈTE DU MARCHÉ AVEC DES PERFORMANCES EXCEPTIONNELLES  
 DIE VOLLSTÄNDIGSTE PRODUKTREIHE AUF DEM MARKT MIT AUßERGEWÖHNLICHEN LESITUNGEN



SERIES SÉRIES REIHEN	CAPACITY CAPACITÉ FÖRDERVOLUMEN	A	B	C	D	E	F	G	H	I
0	0050 - 0075	52,6	25,2							
	0100 - 0125 - 0150	58,8	28,4	7,5	18,5	52	46	15	1/8"	7
	200	67,5	32,6							
1	1002 - 1003	71,8	35,9							
	1004 - 1005 - 1006	81,6	40,7	11,1	25,4	73	67	22,2	1/4"	13
2*	2006 - 2008 - 2010 - 2012	92,5	43,5							
	2015 - 2018 - 2022	107	51	16,5	35	104	86	33	1/4"	14
	2026 - 2030	123	59							
	* DCN DUK A-B - 2 mm AAP A-B + 8 mm DBP A-B + 31 mm									
3**	3025 - 3031 - 3040	122,7	61,3							
	3050 - 3060	149,2	74,5	24	51	150	118	48	3/8"	18
	3071 - 3080 - 3090 - 3100	169,2	84,2							
	** AAP/AEP - ABP - ADP A B + 43 mm ZFC A B + 47 mm									

HYDRAULIC GEAR PUMPS  
 POMES HYDRAULIQUES À ENGRENAGE  
 HYDRAULIK ZAHNRADPUMPEN

HYDRAULIC GEAR MOTORS  
 MOTEURS HYDRAULIQUES À ENGRENAGE  
 HYDRAULIK ZAHNRADMOTOREN

MICRO ELECTRO PUMPS SETS  
 MICRO GROUPES ELECTRO-POMPES  
 MIKRO ELEKTRO-PUMPEN

MICRO POWER PACKS  
 MICRO CENTRALES  
 MIKRO AGGREGATE

MINI ELECTRO PUMPS SETS  
 MINI GROUPES ELECTRO-POMPES  
 MINI ELEKTRO-PUMPEN

MINI POWER PACKS  
 MINI CENTRALES  
 MINI AGGREGATE

DISTRIBUTION  
 DISTRIBUTION  
 VERTEILUNG

HYDRAULIC GEAR PUMPS  
 POMES HYDRAULIQUES À ENGRENAGE  
 HYDRAULIK ZAHNRADPUMPEN

HYDRAULIC GEAR MOTORS  
 MOTEURS HYDRAULIQUES À ENGRENAGE  
 HYDRAULIK ZAHNRADMOTOREN

MICRO ELECTRO PUMPS SETS  
 MICRO GROUPES ELECTRO-POMPES  
 MIKRO ELEKTRO-PUMPEN

MICRO POWER PACKS  
 MICRO CENTRALES  
 MIKRO AGGREGATE

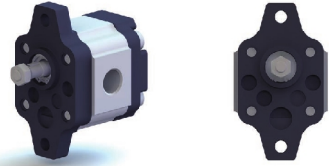
MINI ELECTRO PUMPS SETS  
 MINI GROUPES ELECTRO-POMPES  
 MINI ELEKTRO-PUMPEN

MINI POWER PACKS  
 MINI CENTRALES  
 MINI AGGREGATE

DISTRIBUTION  
 DISTRIBUTION  
 VERTEILUNG

FLAT FRONT BODY  
CORPS AVANT FLAT  
FLACHER VORDERKÖRPER

AAN



DRIVING SHAFTS  
ARBRES D'ENTRAÎNEMENT  
ANTRIEBSWELLEN

STRAIGHT  
CYLINDRIQUE  
ZYLINDRISCH

TANG  
TOURNEVIS  
MITNEHMERZAPFEN

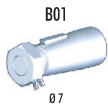
PORTS CONNECTORS  
BRIDES D'ALIMENTATION  
FLANSCHVERSCHRÄUBUNGEN

10

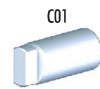
40

F

AAN



Ø7



3 X 7



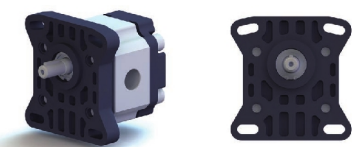
MODELE	CAPACITY	MAXI PRESSURE			MAX. SPEED AT RPM		MIN SPEED AT RPM			MAX. SPEED FOR P
TYPE	CAPACITÉ	PRESSION MAXI			VITESSE MAXI t/mn SOUS		VITESSE MINI t/mn Å			VITESSE MAXI POUR P
TYP	FÖRDER-VOLUMEN	MAX.DRUCK			MAX. DREHZAHLL U/mn FÜR		MIN. DREHZAHLL U/mn FÜR			DREHZAHLL MAX. FÜR P
	cc/rev cm <sup>3</sup> /t cm <sup>3</sup> /U	BAR			P1	P2	100 BAR	180 BAR	250 BAR	< 100 BAR
0050	0,5	200	230	250	5000	6000	800	1200	1500	5000
0075	0,75	175	200	220	5000	6000	800	1200	1500 220 BAR	5000
0100	1	160	180	200	5000	6000	800	1200	1500 220 BAR	5000
0125	1,25	100	120	150	3500	4500	500	1000 150 BAR	1500 200 BAR	3500
0150	1,5	70	90	120	3500	4500	500	1000 150 BAR		3500
0200	2	70	85	100	3000	4000	500	1000 150 BAR		3000

FLAT FRONT BODY  
CORPS AVANT FLAT  
FLACHER VORDERKÖRPER

BAN



CBN



DRIVING SHAFTS  
ARBRES D'ENTRAÎNEMENT  
ANTRIEBSWELLEN

TAPER  
CONIQUE  
KEGEL

STRAIGHT  
CYLINDRIQUE  
ZYLINDRISCH

TANG  
TOURNEVIS  
MITNEHMERZAPFEN

PORTS CONNECTORS  
BRIDES D'ALIMENTATION  
FLANSCHVERSCHRÄUBUNGEN

10

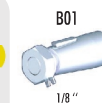
20

40

C

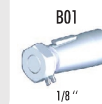
F

BAN

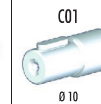


1/8"

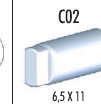
CBN



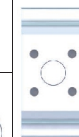
1/8"



Ø10



6.5 X 11



MODELE	CAPACITY	MAXI PRESSURE			MAX. SPEED AT RPM		MIN SPEED AT RPM			MAX. SPEED FOR P
TYPE	CAPACITÉ	PRESSION MAXI			VITESSE MAXI t/mn SOUS		VITESSE MINI t/mn Å			VITESSE MAXI POUR P
TYP	FÖRDER-VOLUMEN	MAX.DRUCK			MAX. DREHZAHLL U/mn FÜR		MIN. DREHZAHLL U/mn FÜR			DREHZAHLL MAX. FÜR P
	cc/rev cm <sup>3</sup> /t cm <sup>3</sup> /U	BAR			P1	P2	100 BAR	180 BAR	250 BAR	< 100 BAR
1002	2,05	200	230	250	5000	6000	1000	1200	1400	8000
1003	3,07	200	230	250	5000	6000	900	1100	1400	7000
1004	4,09	150	180	200	4000	5000	700	1000	1200 200 BAR	6000
1005	5,12	125	150	175	3500	4500	500	900 175 BAR		5000
1006	6,14	125	140	175	3000	4000	500	900 175 BAR		5000