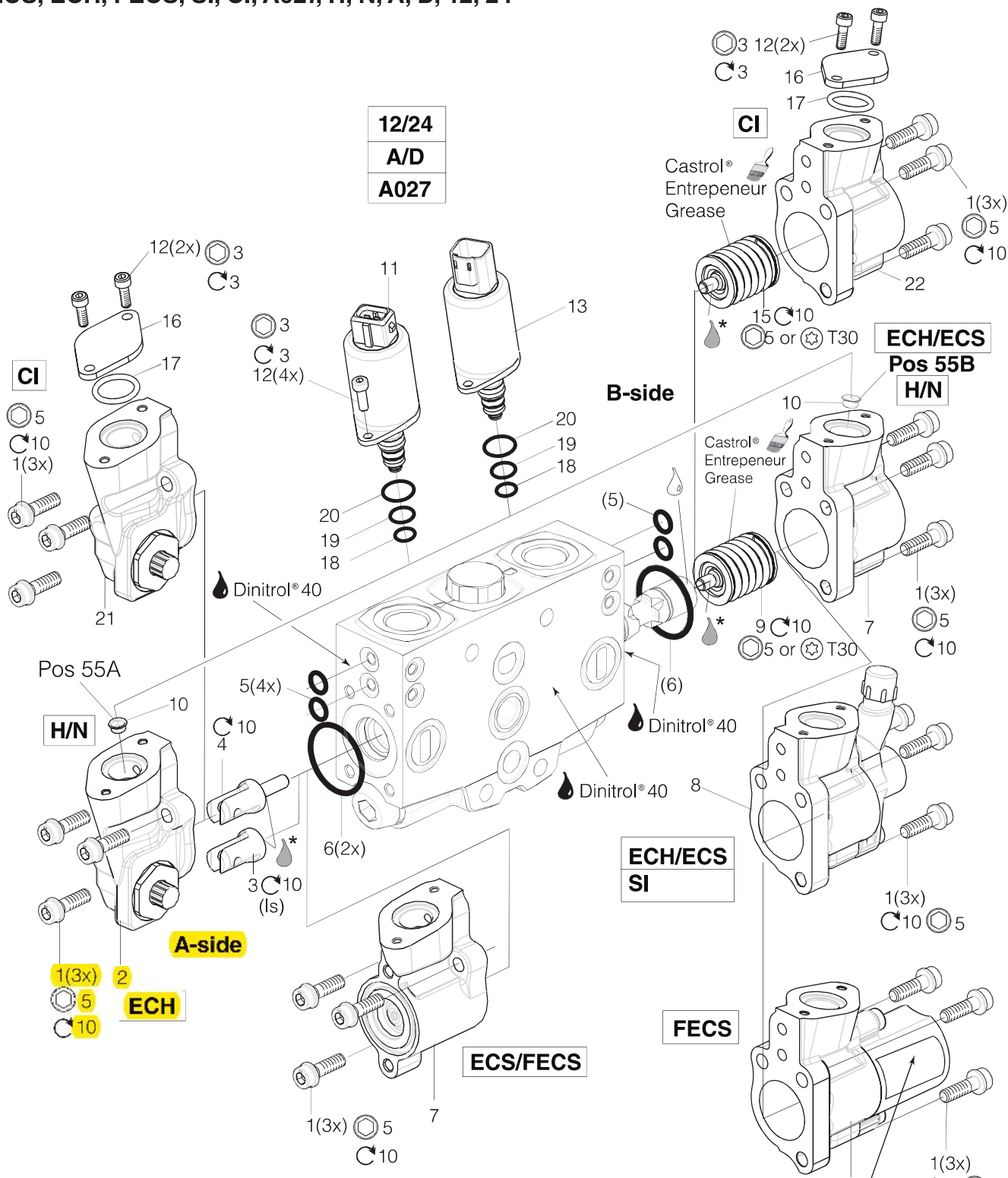


ECS, ECH, FECS, SI, CI, A027, H, N, A, D, 12, 24



12/24
A/D
A027

ECH/ECS
Pos 55B
H/N

ECH/ECS
SI

FECS

ECS/FECS

Pos 55A

H/N

A-side

ECH

* **Loctite® 243**

Don't disassemble the spring inside teh FECS cap

24

⚠ WARNING

Compressed spring!
 Read service instructions
 before opening!

Försänd fjäder!
 Läs serviceinstruktion
 innan demontering!

See Customer Specification				
Code	Pos	Part	Description	Remarks / Items
ECH	50	398000ECH2	Actuator ECH, A- side	1(3x), 2
ECH	50	6760046	Spool stud for LS spools	3 (5x) Used if pos 60 are DIs, EAls or MIs
ECH	50	6760047	Spool stud	4 (5x)
ECS, FECS	50	398000ECS2	Actuator cap, A- side	1(3x), 7
ECS, ECH	50	398000ECS2	Actuator cap, B- side	1(3x), 7
FECS	50	6760179	Spool actuator, B- side	1(3x), 14, 24
FECS	50	6763170	Sign 'WARNING'	24
SI	52	398000ESI2	Actuator cap and position sensor	1(3x), 8
		398000ECSK	Seal kit, CI, ECH, ECS, FECS	5(4x), 6(2x)
ECS, ECH, FECS	50	6760048	Spring Pack ECH, ECS, FECS (5-18) bar	9
ECS, ECH, FECS + A020	50 + 59	398000K023	Spring Pack ECS, ECH, FECS+A020 (5-16) bar	9
CI	50	6760352	Spool actuator CI, A- side	1(3x), 21 [12(2x), 16, 17]
CI	50	6760353	Spool actuator CI, B- side	1(3x), 22 [12(2x), 16, 17]
CI	50	6760042	Spring Pack CI, centering force 140 N	15
CI	50	6760354	Seal kit, CI	17(5x)
A + 12	56 + 05	6763059	Solenoid valve, PS25, 12 VDC	11 [18, 19, 20], 12(2x)
A + 24	56 + 05	6763060	Solenoid valve, PS25, 24 VDC	11 [18, 19, 20], 12(2x)
D + 12	56 + 05	6763061	Solenoid valve, PS25, 12 VDC	13 [18, 19, 20], 12(2x)
D + 24	56 + 05	6763062	Solenoid valve, PS25, 24 VDC	13 [18, 19, 20], 12(2x)
A + 12 + A027	56 + 05 + 59	6763063	Solenoid valve (PS25) w. man. override 12 VDC	11 [18, 19, 20], 12(2x)
A + 24 + A027	56 + 05 + 59	6763064	Solenoid valve (PS25) w. man. override 24 VDC	11 [18, 19, 20], 12(2x)
A + 12	56 + 05	6763328	Solenoid valve, PS25MO, 12 VDC	11[18, 19, 20], 12(2x),10
A + 24	56 + 05	6763327	Solenoid valve, PS25MO, 24 VDC	11[18, 19, 20], 12(2x),10
		6760507	Seal kit for PS25	18(5x), 19(5x), 20(5x)
H	55A/55B	398000K601	Pilot orifice ø0.6 mm, marked 6	10 (5x)
N	55A/55B	398000K602	Pilot orifice ø0.9 mm, marked 9	10 (5x)