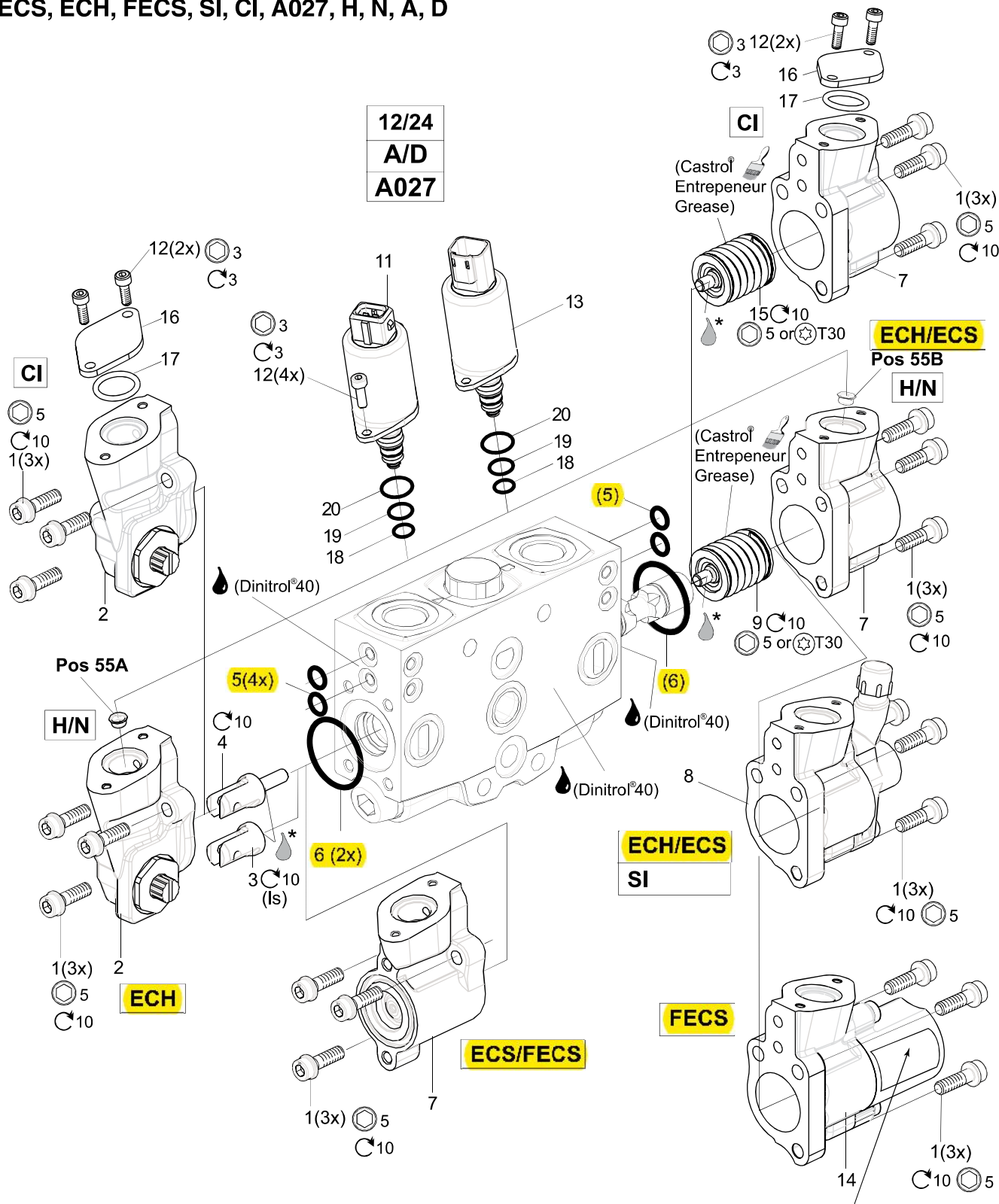


ECS, ECH, FECS, SI, CI, A027, H, N, A, D



* (Loctite® 242)

⚠ Don't disassemble the spring inside the FECS cap

⚠ WARNING
 Compressed spring!
 Read service instructions before opening!

See Customer Specification				
Code	Pos	Part	Description	Remarks / Items
ECH	50	398000ECH2	Actuator ECH, A-side	1(3x), 2
ECH	50	6760046	Spool stud for LS spools (5 pcs in kit)	3 (5x) Used if pos 60 are DIs, EAls or MIs
ECH	50	6760047	Spool stud	4 (5 pcs in kit)
FECS	50	6760179	Spool actuator, B-side	1(3x), 14
ECS/ECH/FECS	50	398000ECS2	Actuator cap	1(3x), 7
SI	52	398000ESI2	Actuator cap and position sensor	1(3x), 8
		398000ECSK	Seal kit, CI, ECH, ECS, FECS	5(4x), 6(2x)
ECS/ECH/FECS	50	6760048	Spring Pack ECH, ECS, FECS	9
ECS/ECH/FECS +A020	50, 59	398000K023	Spring Pack ECS, ECH, FECS+A020	9
CI	50	6760352	Spool actuator, A-side	1(3x), 2, 12(2x) 16, 17
CI	50	6760353	Spool actuator, B-side	1(3x), 7, 12(2x) 16, 17
CI	50	6760042	Spring Pack CI	15
CI	50	6760354	Seal kit, CI	17(5 pcs in kit)
A + 12	56 + 05	398000MA12	Solenoid valve, PS25, 12 VDC	11[18, 19, 20], 12(2x)
A + 24	56 + 05	398000MA24	Solenoid valve, PS25, 24 VDC	11[18, 19, 20], 12(2x)
D + 12	56 + 05	398000MD12	Solenoid valve, PS25, 12 VDC	13[18, 19, 20], 12(2x)
D + 24	56 + 05	398000MD24	Solenoid valve, PS25, 24 VDC	13[18, 19, 20], 12(2x)
D + 12 + A027	56 + 05 + 59	398000MA02712	Solenoid valve (PS25) w. man. override 12 VDC	11[18, 19, 20], 12(2x)
D + 24 + A027	56 + 05 + 59	398000MA02724	Solenoid valve (PS25) w. man. override 24 VDC	11[18, 19, 20], 12(2x)
		6760309	Seal kit for PS25	18, 19, 20 (5 pcs in kit)
H	55A/55B	398000K601	Pilot orifice ø0.6 mm, marked 6	10 (5 pcs in kit)
N	55A/55B	398000K602	Pilot orifice ø0.9 mm, marked 9	10 (5 pcs in kit)