

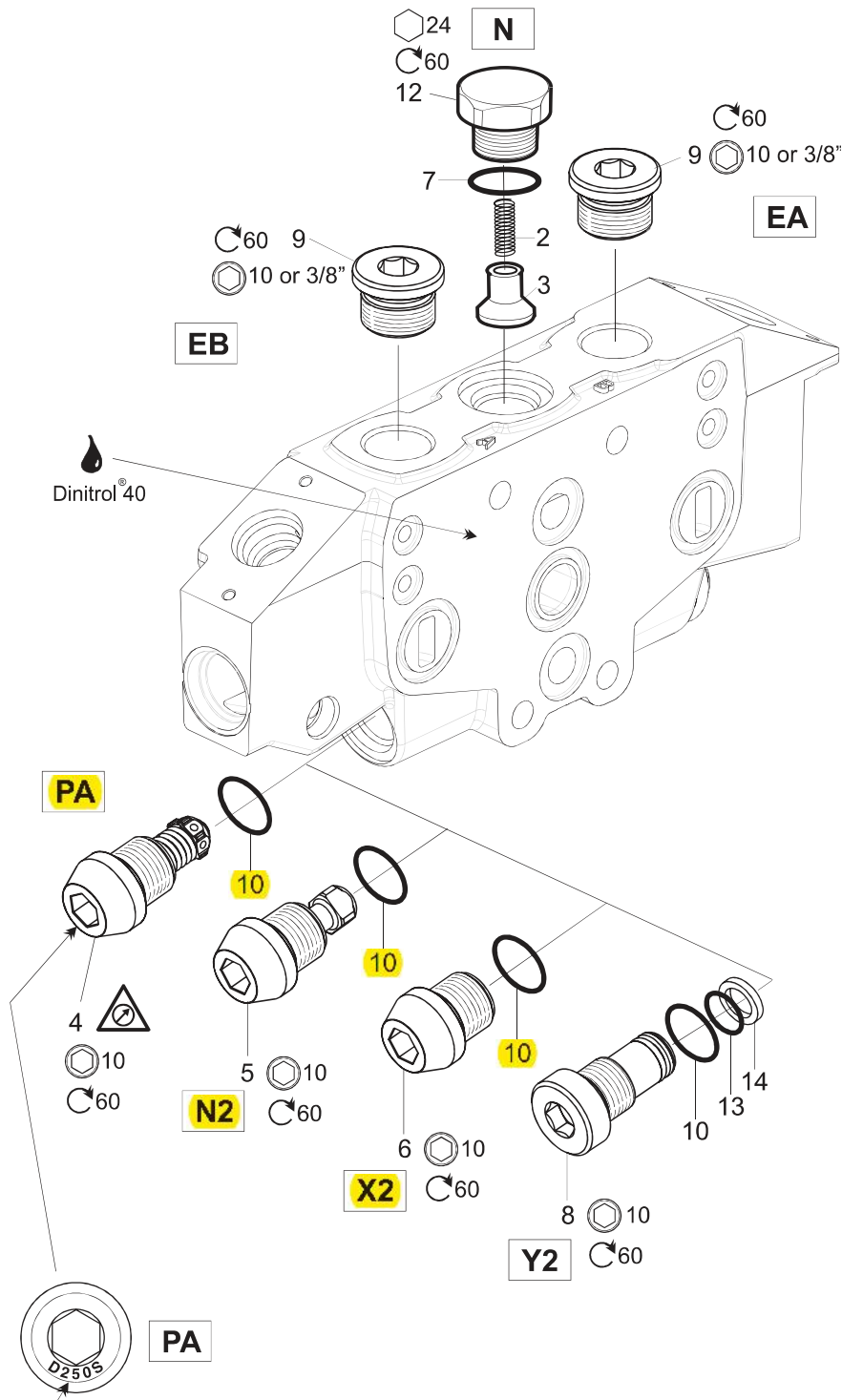
Basic Functions

See Customer Specification				
Code	Pos	Part	Description	Remarks / Items
N	66	398000K011	Supply check valve	12 [2, 3, 7]
N	66	6760444	Seal kit	7 (5x)
EA, EB + G	60 + 04	-	Plug VST11/2EDCF	9
EA, EB + U	60 + 04	-	Plug 10HP5ON-S	9
N2	76A/76B	393000K194	Load hold check valve, N2	5 [10]
X2	76A/76B	393000K193	Cavity plugged (without check valve), X2	6 [10]
Y2	76A/76B	393000K195	Cavity plugged, Y2	8 [10, 13, 14]
N2, X2, PA	76A/76B	6760445	Seal kit PLC053, N2, X2	10 (5x)
Y2	76A/76B	393000K818	Seal kit, Y2	10, 13, 14

See Customer Spec.						
Code	Pos	Part#std [10 l/min]	Part#A003 [20 l/min]	Part#A007 [10 l/min]	Description	Remarks / Items
25	76A/76B	393000U052		393000U053	PLC053-025	4 [10]
32	76A/76B		398000K208		PLC053-032	4 [10]
40	76A/76B		398000K209		PLC053-040	4 [10]
50	76A/76B	393000K176	398000K301	393000K558	PLC053-050	4 [10]
63	76A/76B	393000K177		393000K559	PLC053-063	4 [10]
80	76A/76B	393000K178	398000K210	393000K560	PLC053-080	4 [10]
100	76A/76B	393000K179	398000K211	393000K561	PLC053-100	4 [10]
120	76A/76B		398000K318		PLC053-120	4 [10]
125	76A/76B	393000K180	398000K271	393000K562	PLC053-125	4 [10]
140	76A/76B	393000K181		393000K563	PLC053-140	4 [10]
160	76A/76B	393000K182		393000K564	PLC053-160	4 [10]
170	76A/76B		398000K319		PLC053-170	4 [10]
175	76A/76B	393000K183		393000K565	PLC053-175	4 [10]
190	76A/76B	393000K184		393000K566	PLC053-190	4 [10]
210	76A/76B	393000K185	398000K212	393000K567	PLC053-210	4 [10]
230	76A/76B	393000K186		393000K568	PLC053-230	4 [10]
240	76A/76B	393000K134		398000K249	PLC053-240	4 [10]
250	76A/76B	393000K187		393000K569	PLC053-250	4 [10]
260	76A/76B	393000K188		393000K570	PLC053-260	4 [10]
280	76A/76B	393000K189		393000K571	PLC053-280	4 [10]
300	76A/76B	393000K190		393000K572	PLC053-300	4 [10]
320	76A/76B	393000K191		393000K573	PLC053-320	4 [10]
350	76A/76B	393000K192		393000K574	PLC053-350	4 [10]
A002 + 280	49+76A/B	393000V189			PLC053-280	4 [10] DV design
A002 + 350	49+76A/B	6760734			PLC053-350	4 [10] DV design
A029 + 100	89* + 76*	398000K515			PLC053-100	4 [10]
A029 + 160	89* + 76*	398000K516			PLC053-160	4 [10]
A029 + 250	89* + 76*	6760486			PLC053-250	4 [10]

Basic Functions

Spool section N, PA, N2, X2, Y2, EA, EB



Design, Setting Pressure

- D = Std
- S = Variant A003
- U = Variant A007
- DV = Std, + FPM seal