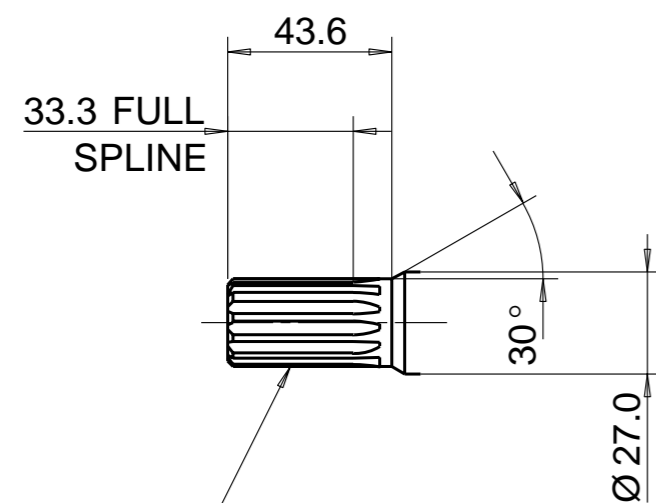
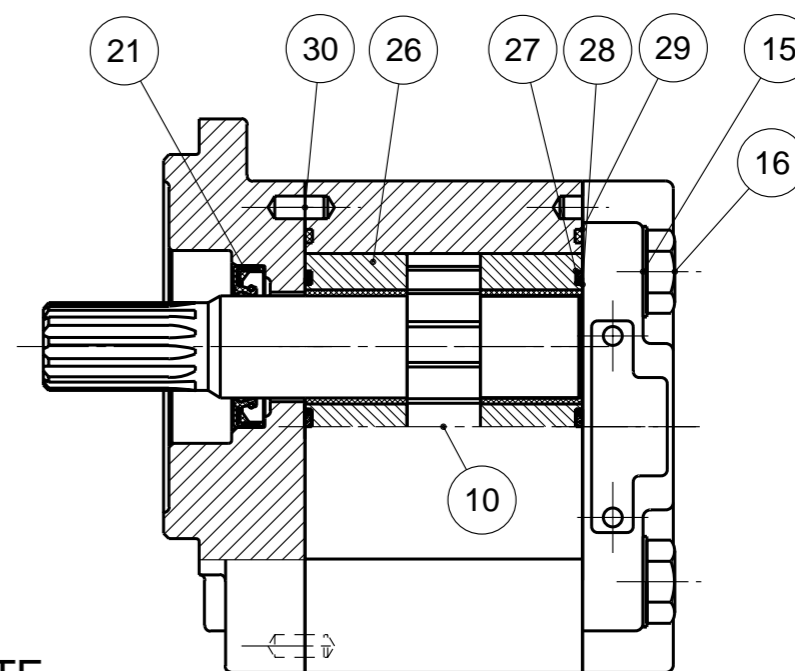
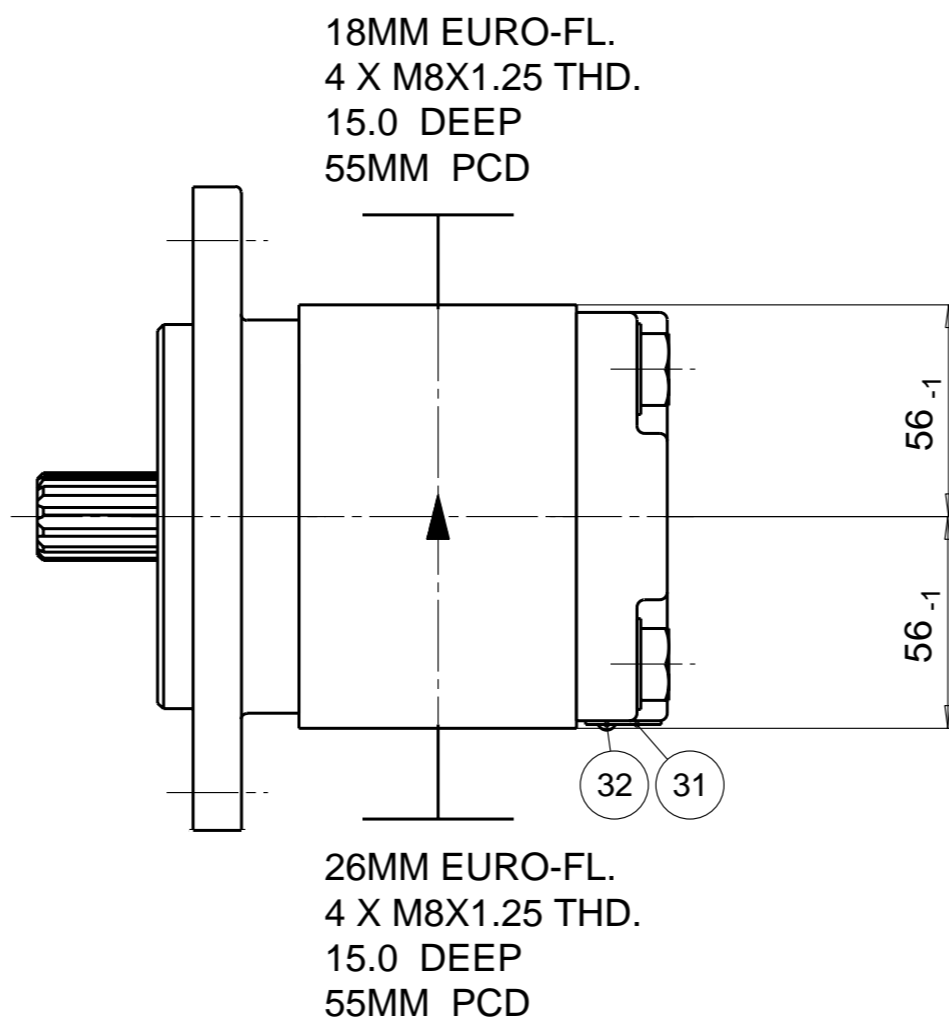
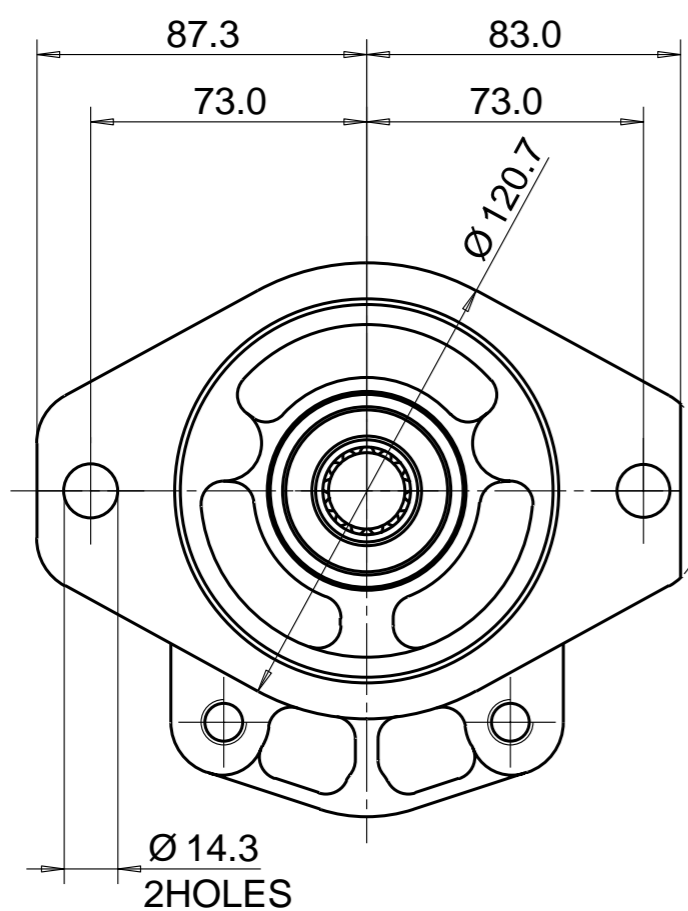


PUMP DATA	
DISPLACEMENT	19,0 ccm
MAX. PRESSURE	250 bar
SPEED RATE	500 TO 3300 min <sup>-1</sup>
MAX. INPUT SHAFT TORQUE	345 Nm
ROTATION	ANTI CLOCKWISE

CUSTOMER  
PART NUMBER  
5013450



SAE INVOLUTE SPLINE  
13 TEETH - 16/32 PITCH  
FLAT ROOT SIDE FIT  
MAJOR DIA 21.67-21.79  
MINOR DIA 18.631 MAX.

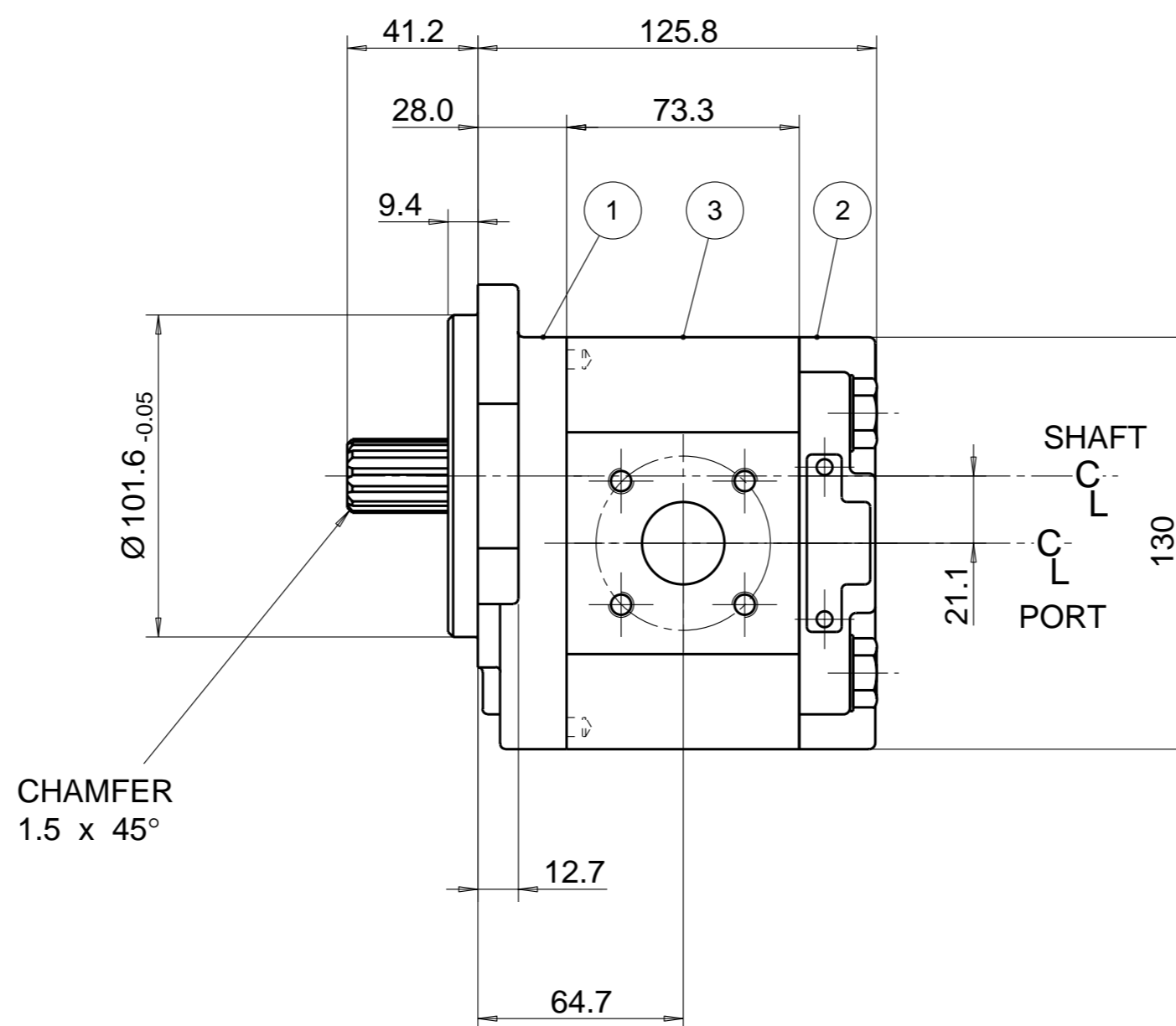


NOTE

- 1 FOR ASSEMBLY INSTRUCTIONS SEE DWG. NO. "517-B1" "PGP517 PUMP ASSEMBLY INSTRUCTIONS".
- 2 NAMEPLATE LOCATION MAY VARY DUE TO DESIGN CRITERIA OR MANUFACTURING LOCATION. STICKER OPTIONAL FOR #31 & #32

28	391 2882 162	2	SEAL. BK-UP	36			
27	391 2882 161	2	SEAL. CHAN.	35			
26	391 2185 093	2	THRBLK/BSHG	34			
25				33			
24				32	391 1432 004	2	SCREW. DR.
23				31	391 2183 227	1	NAMEPLATE
22				30	391 2080 080	2	PIN. DOWEL
21	391 2883 104	1	SEAL. LIP	29	391 2882 263	2	SEAL. SECT.

ITEM	PART NO	REQD	DESCRIPTION
20			
19			
18			
17			
16	391 1401 549	4	CAPSCREW (110 MM)
15	9222-575-009	4	WASHER
14			
13			
12			
11			
10	333 2919 340	1	SET, GEAR SHAFT
9			
8			
7			
6			
5			
4			
3	333 8119 906	1	HOUSING. GEAR
2	333 3000 100	1	HOUSING. PEC
1	333 5020 212	1	HOUSING. SEC



UNIT COMPLETELY TO BE PAINTED  
EXCEPT : MOUNTING FACE  
PORTS  
SEAL FACES  
NAMEPLATE  
COLOUR : BLACK (RAL 9005) SEE ZSS - A1

THIRD ANGLE PROJECTION

EXP NO.	
FIRST USED	11 - 10 - 913
333 9110 380	
SYM.	REVISIONS

THIS DOCUMENT CONTAINS INFORMATION THAT IS CONFIDENTIAL AND PROPRIETARY TO PARKER-HANNIFIN CORPORATION ("PARKER"). THIS DOCUMENT IS FURNISHED ON THE UNDERSTANDING THAT THE DOCUMENT AND THE INFORMATION IT CONTAINS WILL NOT BE COPIED OR DISCLOSED TO OTHERS OR USED FOR ANY PURPOSE OTHER THAN CONDUCTING BUSINESS WITH PARKER, AND WILL BE RETURNED AND ALL FURTHER USE DISCONTINUED UPON REQUEST BY PARKER. ALL RIGHTS RESERVED.

PGP517A0190AD1K6\*VJ9J8B1B1

MATERIAL	ADM CTR P	
H.E.-STD:	REV DTE 000000	WT 6.25 kg
		DIMENSIONS ARE MM

**Parker** Pump & Motor Division  
Chemnitz

DR. BY	DATE	CH. BY	DATE	SCALE
RP	14OCT11	JS	14OCT11	1/2
<b>333 9110 380</b>				
© 2011 Parker Hannifin Corporation				