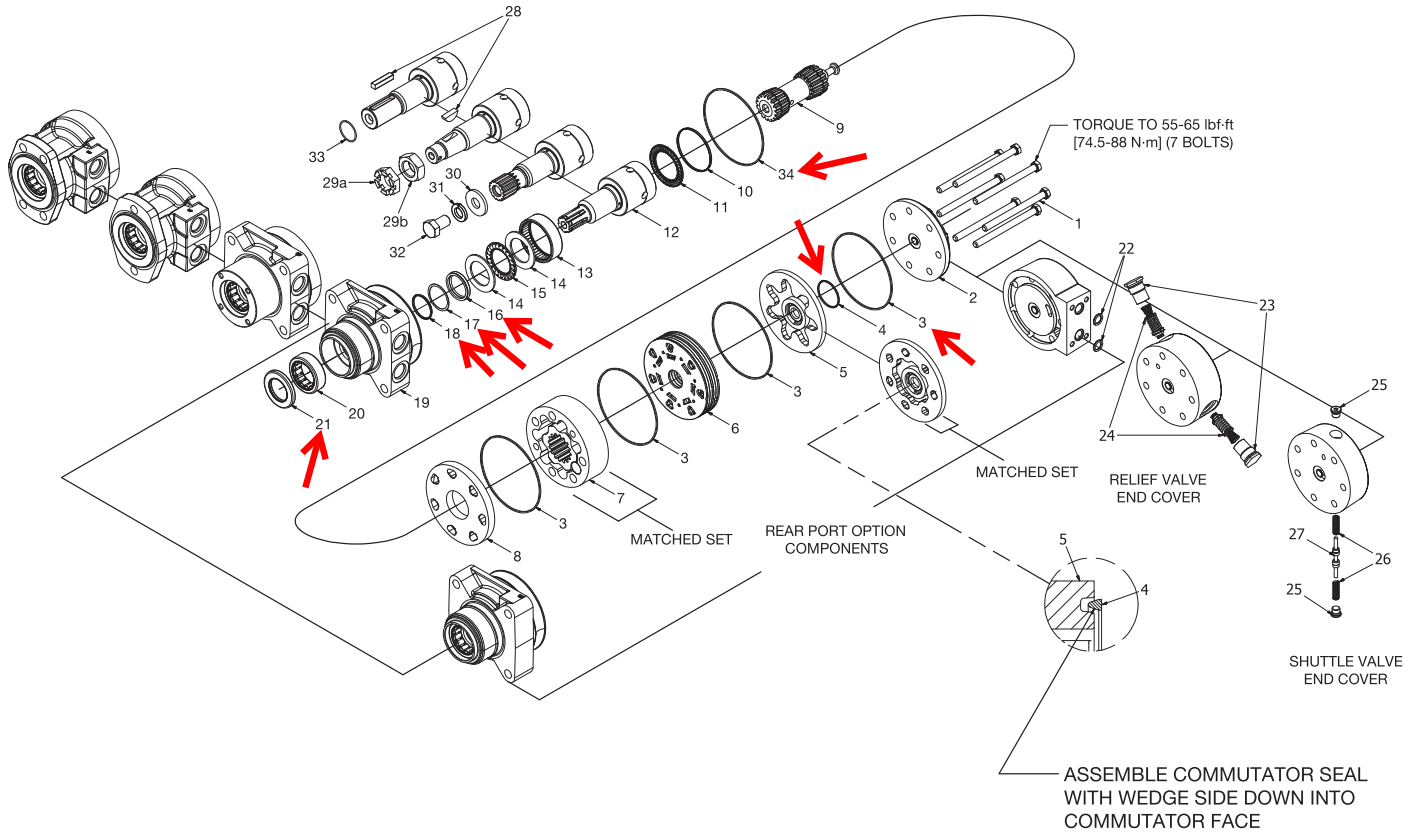


**Typical Assembly**



Item	Description
1	Special Bolt (7)
2	End Cover
3	Seal Ring (5)
4	Seal Ring - Commutator
5	Commutator Assembly (Matched Set)
6	Manifold
7	Rotor Set (Matched Set)
8	Wear Plate
9	Drive Link
10	Spacer
11	Thrust Bearing
12	Coupling Shaft
13	Radial Bearing
14	Thrust Washer (2)
15	Thrust Bearing
16	Shaft Seal
17	Back Up Washer
18	Back Up Ring
19	Housing
20	Radial Bearing
21	Dirt & Water Seal
22	O-Ring (2)
23	Plug (2)
24	Relief Valve (2)
25	Plug (2)
26	Spring (2)
27	Shuttle Valve
28	Key
29a	Castle Nut
29b	Patch Nut
30	Washer
31	Lock Washer
32	Bolt
33	Retaining Ring

**TGK - Shaft size up to 1-3/8"**

**Chart Use Example:**

TGK0240US080AAAB Torqmotor includes part numbers listed to the right of TGK (SERIES), 0240 (DISP.), U (MOUNTING), S (PORTING), 08 (SHAFT), 0 (ROTATION), and AAAB (OPTION) shown in the left hand column of the chart.

**Caution:**

The charted component service information is for the Torqmotors listed only. Refer to the original equipment manufacturer of the equipment using the Torqmotor for assembly numbers not listed below.

EXPLODED VIEW ITEM#	5	6	8	10	11	13	14	15
<b>DESCRIPTION</b>	<b>COMMUTATOR ASSEMBLY</b>	<b>MANIFOLD (SEE NOTE)</b>	<b>WEAR PLATE</b>	<b>THRUST BEARING RETAINING WASHER</b>	<b>THRUST BEARING</b>	<b>INNER BEARING</b>	<b>THRUST WASHER (2)</b>	<b>THRUST BEARING</b>
TGK-Service Part#	TGK018000A1	TGK015000	477378	420109	070029	071035	400136 (2)	069017

EXPLODED VIEW ITEM#	16	17	18	20	21	34
<b>DESCRIPTION</b>	<b>SHAFT SEAL</b>	<b>BACKUP WASHER</b>	<b>BACKUP RING</b>	<b>OUTER BEARING</b>	<b>DIRT &amp; WATER SEAL</b>	<b>HOUSING O-RING SEAL</b>
TGK-Service Part#	032817	029118	028515	068027	478035	032873

**EXPLODED VIEW (Select Item # Bolt Per Option Group)**

	1 OR	1A OR	1B OR	1C		7	7A	9	9
	<b>STANDARD END COVER</b>	<b>SHUTTLE VALVE END COVER</b>	<b>REAR PORTED END COVER</b>	<b>RELIEF VALVE END COVER</b>	<b>THICKNESS OF ROTOR</b>	<b>ROTOR SET</b>	<b>FREE RUNNING ROTOR SET</b>	<b>DRIVE LINK</b>	<b>DRIVE LINK "L DIM"</b>
			*Seven Bolts Grade Ten Special Bolt						

DISPLACEMENT (in <sup>3</sup> /rev)	BOLT # (BOLT LENGTH - 7 bolts required)								
0110-6.7	021049 (3.750)	021032 (4.750)	021032 (5.000)	021030 (5.000)	.41835	TGK077003	TGK077004	TGK073000	4.413
0140-8.6	021023 (3.875)	021033 (4.875)	021033 (5.125)	021050 (5.125)	.53625	TGK097003	TGK097004	TGK093000	4.531
0170-10.3	021024 (4.000)	021033 (4.937)	021033 (5.125)	021031 (5.125)	.64215	TGK107003	TGK107004	TGK103000	4.637
0195-11.9	021025 (4.125)	021034 (5.000)	021034 (5.375)	021032 (5.375)	.74195	TGK127003	TGK127004	TGK123000	4.737
0240-14.5	021026 (4.250)	021035 (5.125)	021035 (5.500)	021033 (5.500)	.90405	TGK157003	TGK157004	TGK153000	4.899
0280-17.1	021027 (4.375)	021036 (5.375)	021036 (5.625)	021034 (5.625)	1.06615	TGK187003	TGK187004	TGK183000	5.061
0310-19.0	021028 (4.500)	021037 (5.500)	021037 (5.750)	021035 (5.750)	1.17835	TGK197003	TGK197004	TGK193000	5.173
0335-20.6	021029 (4.625)	021038 (5.500)	021038 (5.875)	021035 (5.875)	1.28435	TGK217003	TGK217004	TGK213000	5.279
0360-22.2	021030 (4.750)	021039 (5.625)	021039 (6.000)	021036 (6.000)	1.37185	TGK237003	TGK237004	TGK233000	5.367
0405-24.7	021031 (4.937)	021040 (5.750)	021040 (6.125)	021037 (6.125)	1.54005	TGK294003	TGK247004	TGK247003	5.534
0475-29.1	021033 (5.125)	021042 (6.125)	021042 (6.375)	021040 (6.375)	1.81425	TGK297003	TGK297004	TGK293000	5.809
0530-32.3	021034 (5.375)	021043 (6.250)	021043 (6.625)	021041 (6.625)	2.01375	TGK337003	TGK337004	TGK333000	6.009
0625-38.0	021037 (5.750)	021044 (6.625)	021044 (7.000)	021043 (7.000)	2.36915	TGK377003	TGK377004	TGK373000	6.364
0785-48.0	021042 (6.375)	021046 (7.312)	021046 (7.500)	021045 (7.500)	2.9926	TGK487003	N/A	TGK483000	6.988
0960-58.5	021044 (7.000)	021047 (8.125)	021048 (8.125)	####	3.6285	TGK587003	N/A	TGK583000	7.642

EXPLODED VIEW ITEM#	2			19		SPEED SENSOR	
<b>DESCRIPTION</b>	<b>END COVER</b>	<b>BOLT</b>	<b>PORTING</b>	<b>SERVICE HOUSING</b>	<b>HOUSING ASSEMBLY</b>	<b>SERVICE HOUSING</b>	<b>SENSOR</b>
AS - SAE "A" 2-Bolt	TGK016000	Item 1	7/8-14 O-Ring	TGK012010	TGK012010A1	TGK012310A1	455063
LS - Wheel Mount w/ Brake Nose	TGK016000	Item 1	7/8-14 O-Ring	TGK012003	TGK012003A1		
HW - Wheel Mount (US) with Machined Pilot Nose	TGK016000	Item 1	G1/2 Milled	TGK012006	TGK012006A1		
MN - Standard SAE "A" 4-Bolt Flange	TGK016000	Item 1	Manifold W/M8 THD	TGK012009	TGK012009A1		
MS - Standard SAE "A" 4-Bolt Flange	TGK016000	Item 1	7/8-14 O-Ring	TGK012011	TGK012011A1	TGK012311A1	455063
MW - Standard SAE "A" 4-Bolt Flange	TGK016000	Item 1	G1/2 Milled	TGK012004	TGK012004A1		
RS - Wheel Mount Special Machine Nose	TGK016000	Item 1	7/8-14 O-Ring	TGK012007	TGK012007A1		
US - Wheel Mount	TGK016000	Item 1	7/8-14 O-Ring	TGK012000	TGK012000A1		

EXPLODED VIEW ITEM#	1, 1A, 1B, 1C				SPEED SENSOR		
<b>DESCRIPTION</b>	<b>END COVER</b>	<b>BOLT</b>	<b>PORTING</b>	<b>SERVICE HOUSING</b>	<b>HOUSING ASSEMBLY</b>	<b>SERVICE HOUSING</b>	<b>SENSOR</b>
EL - 6-Hole SAE "A" w/ Long Pilot	TGK016001	Item #1B	Manifold M8 Threads	TGK012002	TGK012002A1		
UC - Wheel Mount	TGK016005	Item #1B	7/8-14 Rear Radial	TGK012008	TGK012008A1		
UE - Wheel Mount	TGK016006	Item #1B	Manifold 5/16-18 Threads	TGK012008	TGK012008A1		
MB - Standard SAE "A" 4-Bolt Flange	TGK016003	Item #1B	7/8-14 Rear Radial	TGK012020	TGK012020A1	TGK012317A1	455063

For reverse timed manifold, use TGK015001.



**TGK - Shaft size up to 1-3/8"**

SHAFT CODE	EXPLODED VIEW ITEM#	12	SPEED SENSOR 12	28	29A	29B	30	31	32	33
	COUPLING SHAFT DESCRIPTION	COUPLING SHAFT	COUPLING SHAFT	KEY	CASTLE NUT	PATCH NUT	WASHER	LOCK WASHER	BOLT	RETAINING RING
	01 - Long 6B Spline, Groove	TGK019004	TGK019304							
	03 - 1.25" Straight Keyed, 5/8 Tap	TGK019013		039028			028413	028992	021482	401333
	05 - 14 Tooth Spline (12/24 P), 5/8 Tap	TGK019008	TGK019308				028413	028992	021482	
	08 - 1.25" Tapered, 1-20 Thread	TGK019002		038016*	025113	025126				
	19 - 1.38" Tapered, 1.125-18 Thread	TGK019007		038016*	025139	025138				
	20 - 1.38" Straight Keyed, 5/8 Tap	TGK019016		039028			028518	028992	021482	401658
	44 - 14 Tooth Spline (12/24 P), Groove, 12mm Tap	TGK019009								
	45 - 1.25" Straight Key, Groove, 12mm Tap	TGK019003		039028 **						
	46 - 32mm Straight Key, 12mm Tap	TGK019005		039044 ***						401333
	60 - 14 Tooth Spline (12/24 P), SAE	TGK019012	TGK019312							

\* 5/16 x 1  
 \*\* .437 x .3115 sq  
 \*\*\* 1.417 x .394 x .315 (10mm)

OPTION GROUP	EXPLODED VIEW ITEM#	2	3	4	16
	DESCRIPTION	END COVER	SEAL RING (5)	COMMUTATOR SEAL	SHAFT SEAL
	AAAA-"Standard", Black Paint	TGK016000	032870	032861	032817
	AAAB-"Standard", No Paint	TGK016000	032870	032861	032817
	AAAC-"Standard", Double Paint	TGK016000	032870	032861	032817
	AAAF- Castle Nut, Black Paint	TGK016000	032870	032861	032817
	AAAG-Fluorocarbon (Section Seal Only), Black Paint	TGK016000	032869	032861	032818
	AAAH-Fluorocarbon (Section Seal Only), No Paint	TGK016000	032869	032861	032818
	AADD-Fluorocarbon (Section Seal Only), Castle Nut, No Paint	TGK016000	032869	032861	032818
	AAFW-Fluorocarbon (Section Seal Only), Black Paint	TGK016000	032869	032861	032818
	AAWT-Fluorocarbon (Section Seal Only), Castle Nut, Double Paint Black Paint	TGK016000	032869	032861	032818

OPTION GROUP	EXPLODED VIEW ITEM#	1, 1A, 1B, 1C								
		2	3	4	16	23	23	24	24	
	DESCRIPTION	BOLT (7)	END COVER	SEAL RINGS (5)	COMMUTATOR SEAL	INNER SEAL	PLUG & O-RING ASSEMBLY	O-RING	SPRING ONLY	VALVE & SPRING
	AAAT-Bidirectional Shuttle Valve Endcover 11:00	Item #1A	TGK016002A1	032870	032861	032817	036297		401642	415563
	AAAU-Bidirectional Shuttle Valve Endcover 11:00 & Castle Nut	Item #1A	TGK016002A1	032870	032861	032817	036297		401642	415563
	BBBA-1000 PSI Cross Port Relief Endcover	Item#1C		032870	032861	032817	411063A1	032424	401701	410009-40
	BBBG-1500 PSI Cross Port Relief Endcover	Item#1C	TGK016004A1	032870	032861	032817	411063A1	032424	401701	410009-07
	BBBB-2000 PSI Cross Port Relief Endcover	Item#1C	TGK016004A3	032870	032861	032817	411063A1	032424	401701	410009-09
	BBCG-2500 PSI Cross Port Relief Endcover	Item#1C	TGK016004A5	032870	032861	032817	411063A1	032424	401701	410009-11
	BBBC-3000 PSI Cross Port Relief Endcover	Item#1C	TGK016004A4	032870	032861	032817	411063A1	032424	401701	410009-13
	BBBD-4000 PSI Cross Port Relief Endcover	Item#1C		032870	032861	032817	411063A1	032424	401701	410009-16
	BBGD-1750 PSI Cross Port Relief Endcover	Item #1C	TGK016004A2	032870	No Seal	032817	411063A1	032424	401701	410009-08

Standard seal kit SK000323 includes five #032870 seal rings, #032861 commutator seal, #032817 shaft seal, #028515 back up ring, #029118 back up washer, #478035 dirt & water seal, #032873 housing seal, #406018 grease pack and bulletin #050099.

Fluorocarbon seal kit SK000324 includes five #032869 seal rings, #032861 commutator seal, #032818 shaft seal, #028515 back up ring, #029118 back up washer, #478035 dirt & water seal, #032873 housing seal, #406018 grease pack and bulletin #050099.

Fluorocarbon & Hi-Temp Commutator seal kit SK000325 includes five #032869

seal rings, #032861 commutator seal, #032818 shaft seal, #028515 back up ring, #029118 back up washer, #478035 dirt & water seal, #032873 housing seal, #406018 grease pack and bulletin #050099.

Hi-Temp Commutator seal kit SK000333 includes five #032870 seal rings, #032861 commutator seal, #032817 shaft seal, #028515 back up ring, #029118 back up washer, #478035 dirt & water seal, #032873 housing seal, #406018 grease pack and bulletin #050099

TGK018001A1 commutator assembly is required if the designated option group is for rear porting.

