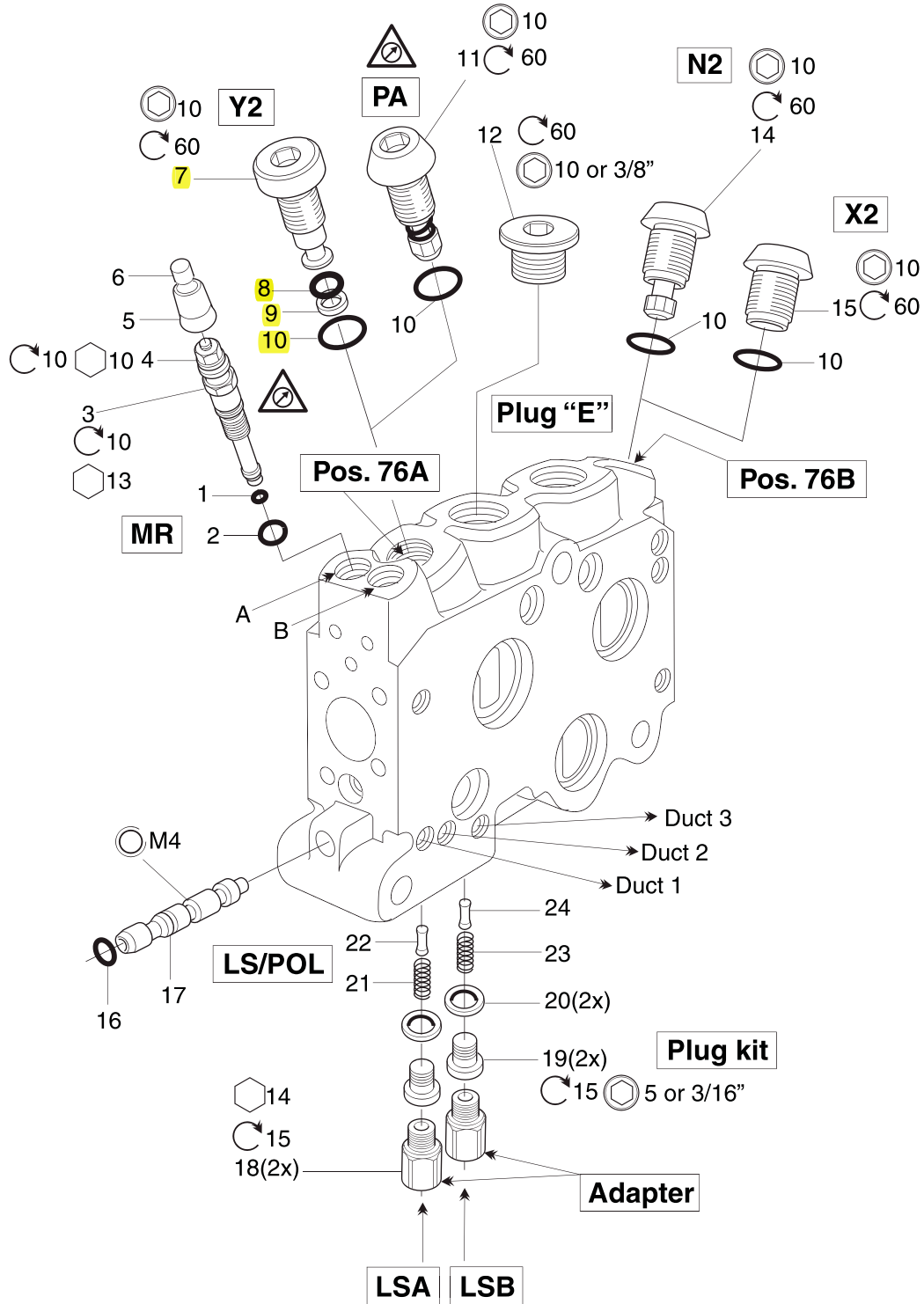


Accessories



See Customer Specification					
Code	Pos	Part #, std	Part #, A005	Description	Remarks / Items
25	76A/76B	393000U052	393000U053	Port relief valve, PLC053- 25-10, (bar at 10 l/min)	11 [10]
32	76A/76B	6760472	6760471	Port relief valve, PLC053- 32-10	11 [10]
50	76A/76B	393000K176	393000K558	Port relief valve, PLC053- 50-10	11 [10]
63	76A/76B	393000K177	393000K559	Port relief valve, PLC053- 63-10	11 [10]
80	76A/76B	393000K178	393000K560	Port relief valve, PLC053- 80-10	11 [10]
100	76A/76B	393000K179	393000K561	Port relief valve, PLC053-100-10	11 [10]
125	76A/76B	393000K180	393000K562	Port relief valve, PLC053-125-10	11 [10]
140	76A/76B	393000K181	393000K563	Port relief valve, PLC053-140-10	11 [10]
160	76A/76B	393000K182	393000K564	Port relief valve, PLC053-160-10	11 [10]
175	76A/76B	393000K183	393000K565	Port relief valve, PLC053-175-10	11 [10]
190	76A/76B	393000K184	393000K566	Port relief valve, PLC053-190-10	11 [10]
210	76A/76B	393000K185	393000K567	Port relief valve, PLC053-210-10	11 [10]
230	76A/76B	393000K186	393000K568	Port relief valve, PLC053-230-10	11 [10]
240	76A/76B	393000K134	398000K249	Port relief valve, PLC053-240-10	11 [10]
250	76A/76B	393000K187	393000K569	Port relief valve, PLC053-250-10	11 [10]
260	76A/76B	393000K188	393000K570	Port relief valve, PLC053-260-10	11 [10]
270	76A/76B	393000U223	393000U225	Port relief valve, PLC053-270-10	11 [10]
280	76A/76B	393000K189	393000K571	Port relief valve, PLC053-280-10	11 [10]
300	76A/76B	393000K190	393000K572	Port relief valve, PLC053-300-10	11 [10]
320	76A/76B	393000K191	393000K573	Port relief valve, PLC053-320-10	11 [10]
350	76A/76B	393000K192	393000K574	Port relief valve, PLC053-350-10	11 [10]
	-	6760445	6760445	Seal kit PLC053, N2, X2	10 (5x)

Code	Pos	Part	Description	Remarks / Items
N2	76A/76B	393000K194	Check valve	14 [10]
X2	76A/76B	393000K193	Plug kit, X2	15 [10]
Y2	76A/76B	393000K195	Plug kit, Y2	7 [8, 9, 10]
Y2	76A/76B	393000K818	Seal kit, Y2	8, 9, 10
EA*,EB*	60	-	Plug "E" VST11/2EDCF	12
EA*,EB*	60	-	Plug "E" 10HP5ON-S	12
T,*A*, *B*,*C*	47	393000K817	Supply pressure reducer	3 [1, 2, 4], 5, 6
	47	393000K831	Gasket kit	1, 2, 4
	47	393000K852	Sealing set	5, 6
A1B	81	393000K627	Individual LS connection	16, 17, 21, 22
A1B2	81	393000K624	Individual LS connection	16, 17, 21, 22, 23, 24
A1B3	81	393000K196	Individual LS connection	16, 17, 21, 22, 23, 24
A2B	81	393000K197	Individual LS connection	16, 17, 21, 22
A2B2	81	393000K198	Individual LS connection	16, 17, 21, 22, 23, 24
A2B3	81	393000K625	Individual LS connection	16, 17, 21, 22, 23, 24
AB	81	393000K199	Individual LS connection	16, 17
AB2	81	393000K284	Individual LS connection	16, 17, 23, 24
AB3	81	393000K626	Individual LS connection	16, 17, 23, 24
A1B1	81	393000K271	Individual LS connection	16, 17, 21, 23, 24
A3B3	81	393000K272	Individual LS connection	16, 17, 21, 23, 24
A*B*	81	6763303	Seal kit code pin	16 (5x)
A*B* + G	81 + 04	393000K828	Plug kit, (BSP)	19(2x), 20(2x)
A*B* + U	81 + 04	-	Plug 4HP5ON-S	19(2x)
A*B* + G	81 + 04	6760627	Adapter 1/8 BSP	18 (2x/section), 20(2x/section)
A*B* + U	81 + 04	6760628	Adapter 7/16-20 UNF	18 (2x/section), 20(2x/section)