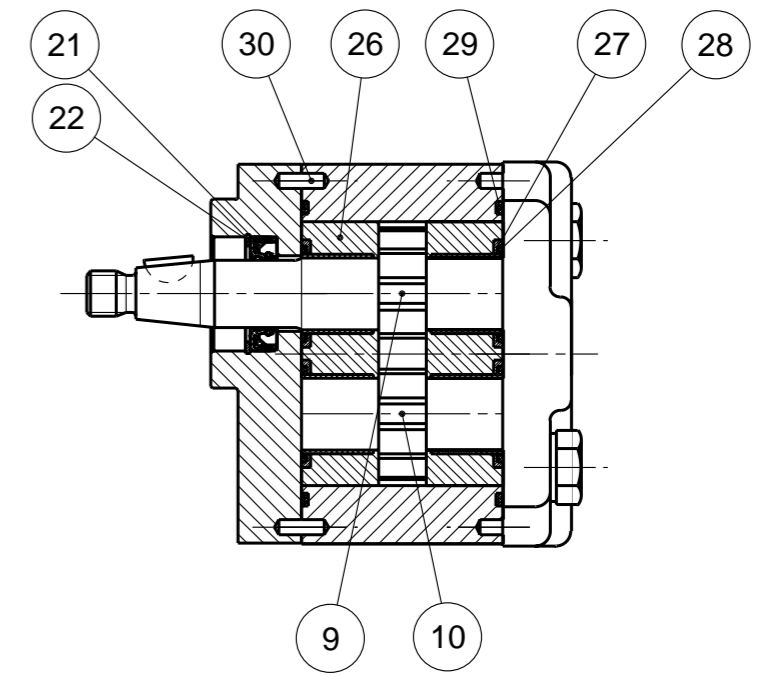
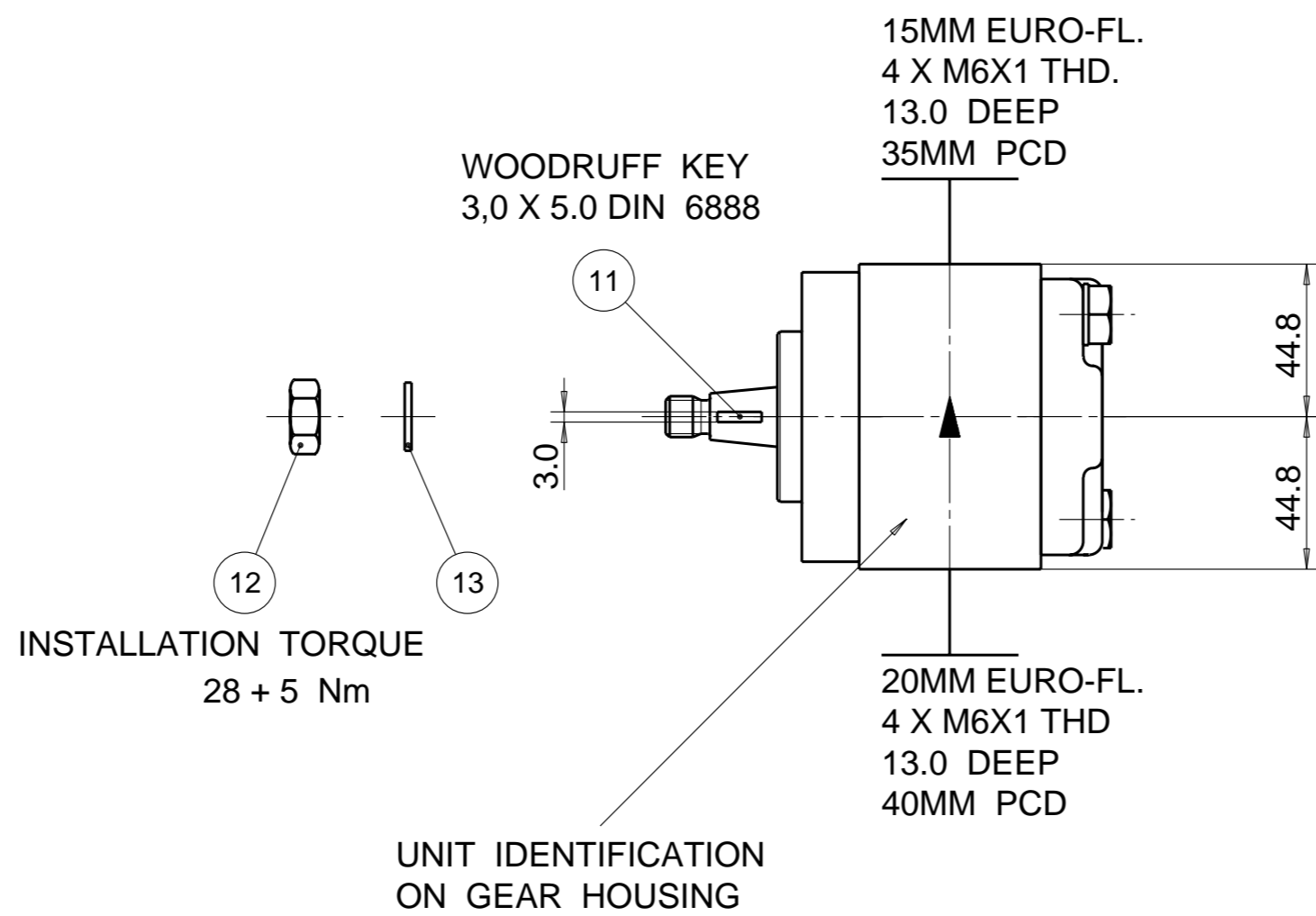
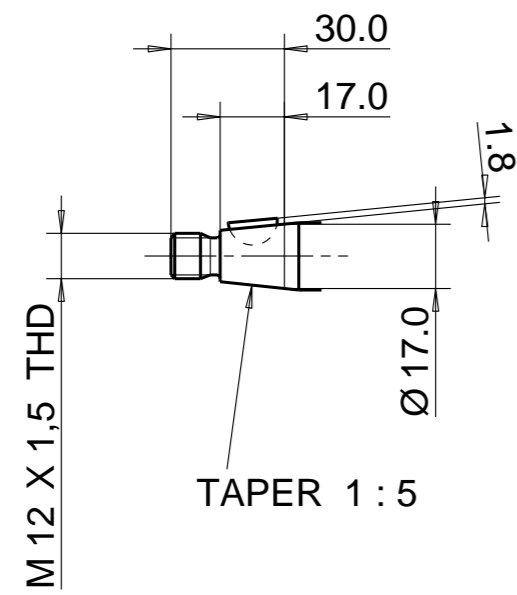


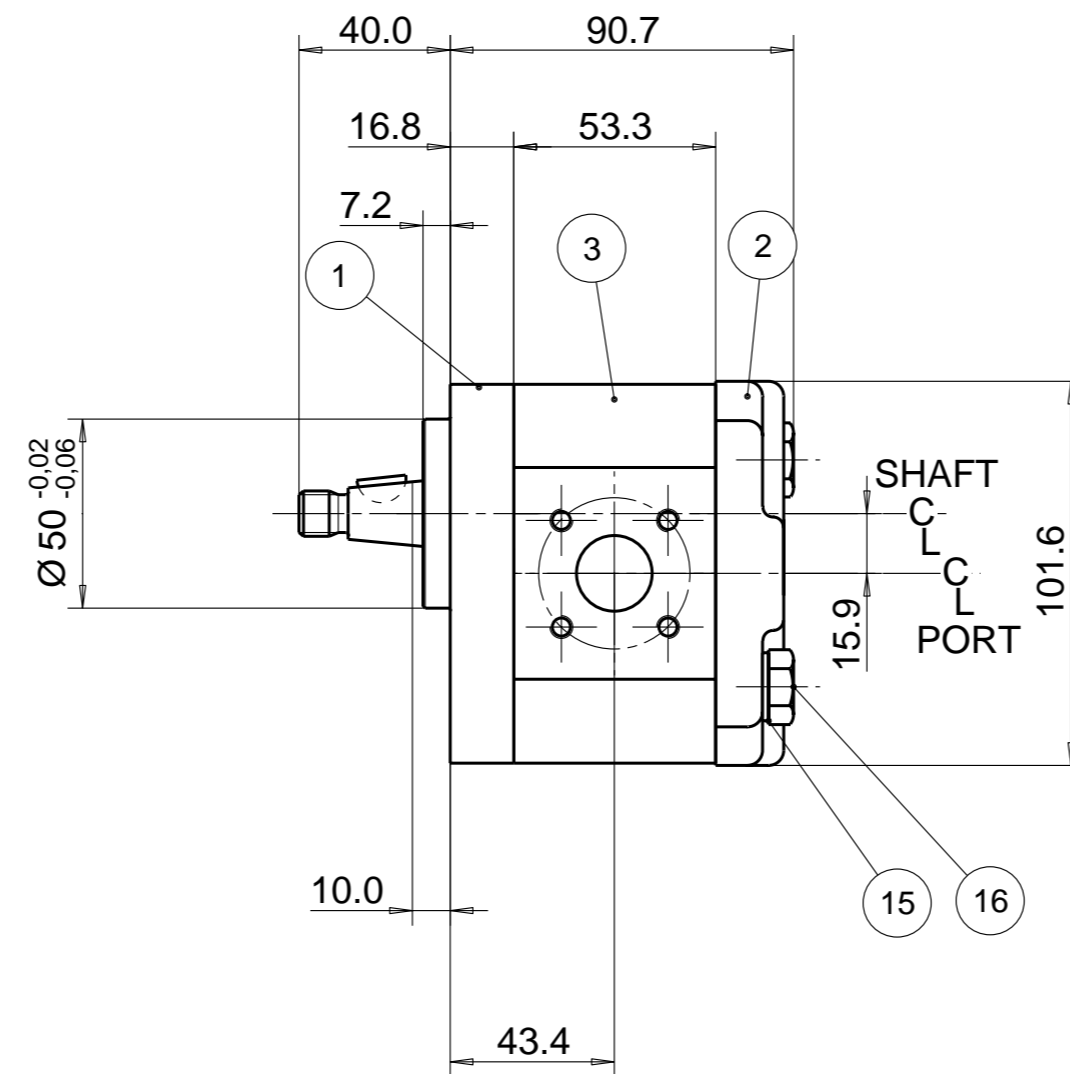
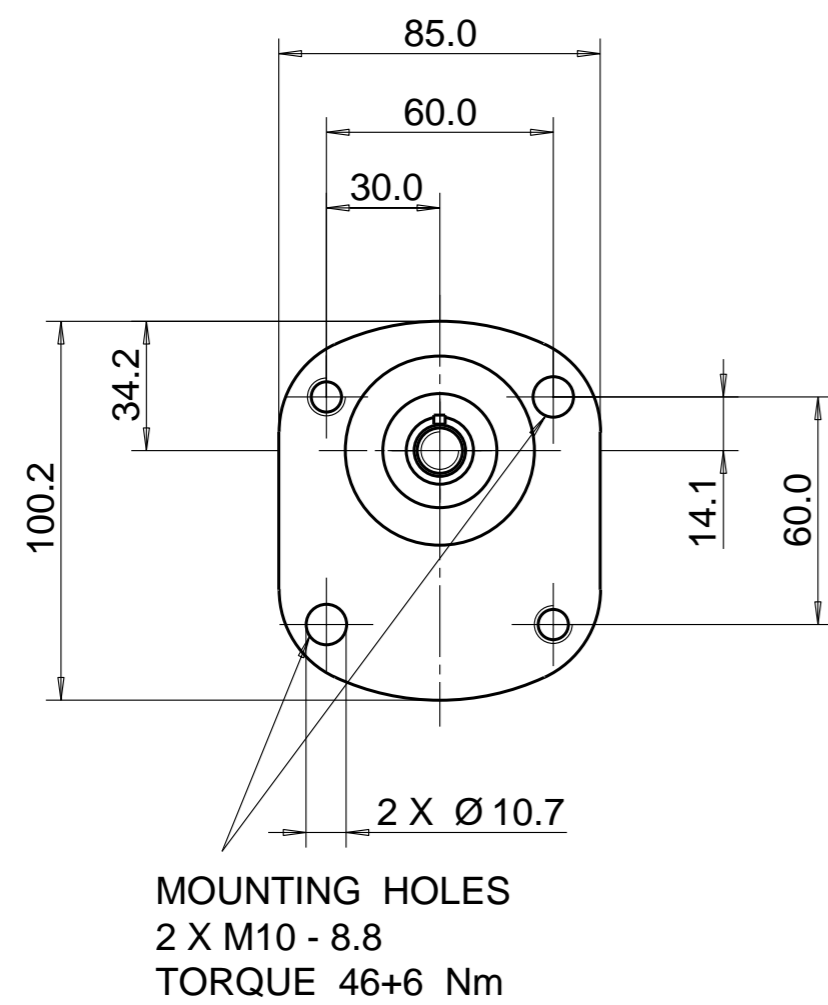
PUMP DATA	
DISPLACEMENT	8,0 ccm
MAX. PRESSURE	250 bar
SPEED RATE	500 TO 3500 min ⁻¹
MAX. INPUT SHAFT TORQUE	193 NM
ROTATION	ANTI CLOCKWISE



NOTE

1 FOR ASSEMBLY INSTRUCTIONS SEE DWG. NO. "511-B1" "PGP511 PUMP ASSEMBLY INSTRUCTIONS".

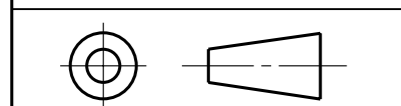
ITEM	PART NO	REQD	DESCRIPTION	ITEM	PART NO	REQD	DESCRIPTION
28	8611-015-000	2	SEAL. BK-UP	36			
27	8611-016-00R	2	SEAL. CHAN.	35			
26	8898-207-00U	2	THRBLK/BSHG	34			
25				33			
24				32			
23				31			
22	9211-323-00B	1	RING, SNAP	30	391 2080 078	2	PIN. DOWEL
21	8301-019-00K	1	SEAL. LIP	29	9313-145-00B	2	SEAL. SECT.



A

ITEM	PART NO	REQD	DESCRIPTION
20			
19			
18			
17			
16	391 1401 541	2	SCREW (80 MM)
15	391 3782 231	2	WASHER
14			
13	391 3782 259	1	WASHER
12	391 1451 160	1	NUT
11	391 1781 099	1	KEY
10	334 2708 000	1	DRIVEN GEAR
9	334 1808 600	1	DRIVE GEAR
8			
7			
6			
5			
4			
3	334 8108 901	1	HOUSING. GEAR
2	334 3000 100	1	HOUSING. PEC
1	334 5051 201	1	HOUSING. SEC

THIRD ANGLE PROJECTION



EXP NO.

FIRST USED

02 - 10 - 980

334 9112 415

A POS. #16 SCREW CHANGE FROM 83MM TO 80MM

SYM. REVISIONS 27MAY13 AS 13-05-935

THIS DOCUMENT CONTAINS INFORMATION THAT IS CONFIDENTIAL AND PROPRIETARY TO PARKER-HANNIFIN CORPORATION ("PARKER"). THIS DOCUMENT IS FURNISHED ON THE UNDERSTANDING THAT THE DOCUMENT AND THE INFORMATION IT CONTAINS WILL NOT BE COPIED OR DISCLOSED TO OTHERS OR USED FOR ANY PURPOSE OTHER THAN CONDUCTING BUSINESS WITH PARKER, AND WILL BE RETURNED AND ALL FURTHER USE DISCONTINUED UPON REQUEST BY PARKER. ALL RIGHTS RESERVED.

PGP511A0080AS1Q2NJ7J5B1B1

MATERIAL

ADM CTR P
REV DTE 27MAY13

H.E.-STD:

WT 3.6 Kg

DIMENSIONS ARE MM

Parker Pump & Motor Division
Chemnitz

DR. BY DATE CH. BY DATE SCALE
PW 08NOV02 UH 08NOV02 1/2

334 9112 415

© 2013 Parker Hannifin Corporation