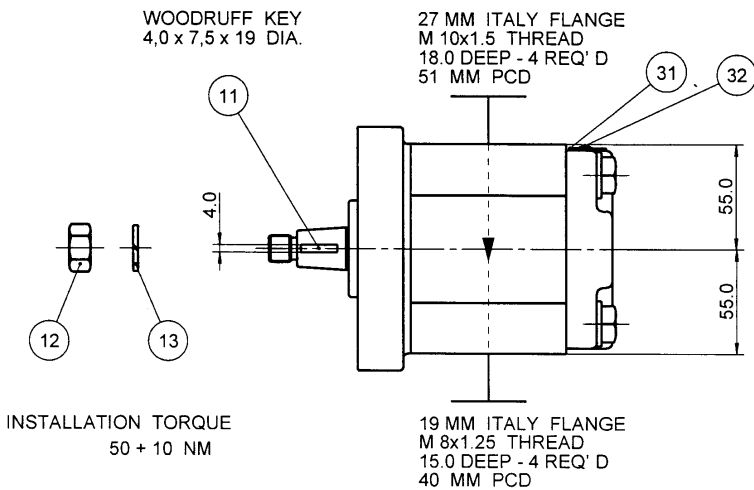
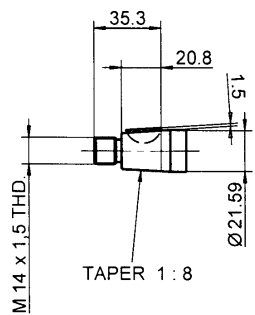
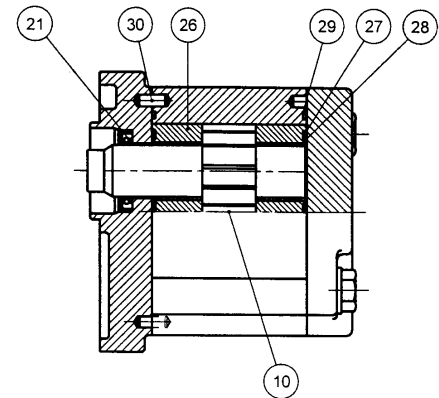


PUMP DATA	
DISPLACEMENT	28.0 ccm
MAX. CONT. PRESSURE	250 bar
SPEED RATE	500 TO 3100 min ⁻¹
MAX. INPUT SHAFT TORQUE	250 Nm
ROTATION	CLOCKWISE

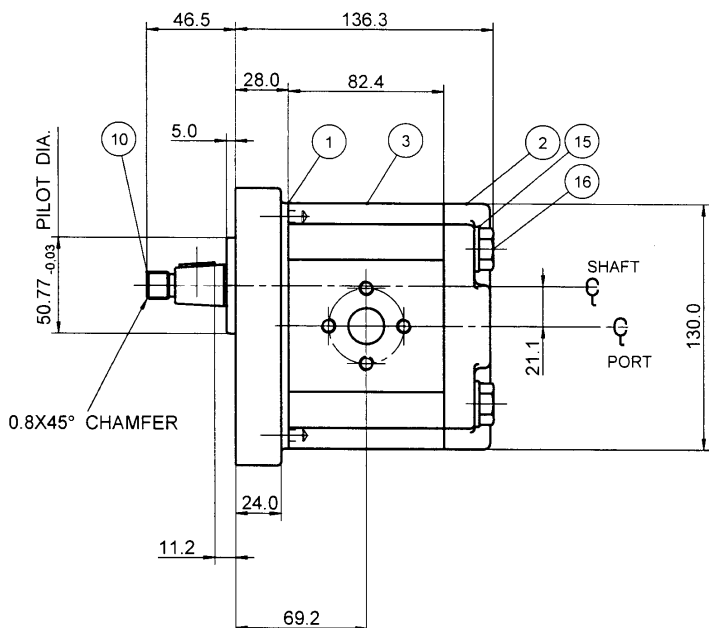
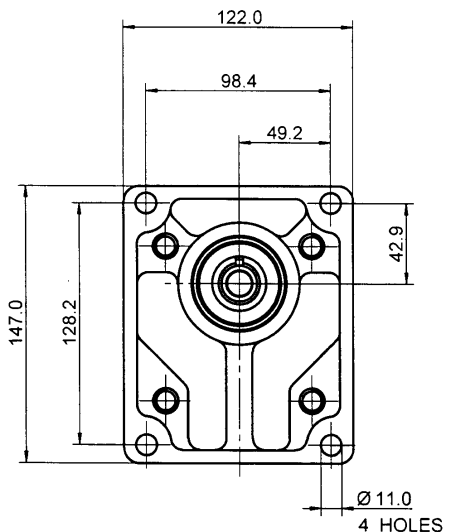


INSTALLATION TORQUE
50 + 10 NM



NOTE

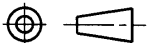
FOR ASSEMBLY INSTRUCTIONS SEE DWG. NO. "517-B1"
"PGP517 PUMP ASSEMBLY INSTRUCTIONS".



ITEM	PART NO	REQ'D	ITEM	PART NO	REQ'D
28	391 2882 162	2	SEAL BK-UP	36	
27	391 2882 161	2	SEAL CHAN.	35	
26	391 2185 093	2	THRBLK/BSHG	34	
25				33	
24			32	391 1432 004	2
23			31	391 2183 227	1
22			30	391 2080 080	2
21	391 2883 058	1	SEAL LIP	29	391 2882 148
					2

BOM. COMPONENT					
ITEM	PART NO	REQ'D	DESCRIPTION	ITEM	PART NO
20	SEE ABOVE	1	BOM. COMPONENT		
19					
18					
17					
16	391 1401 555	4	CAPSCREW (120 MM)		
15	391 3782 232	4	WASHER		
14					
13	391 3782 260	1	WASHER		
12	391 1451 161	1	NUT		
11	391 1781 115	1	KEY		
10	333 2928 673	1	SET, GEAR SHAFT		
9					
8					
7					
6					
5					
4					
3	333 8128 911	1	HOUSING. GEAR		
2	333 3000 100	1	HOUSING. PEC		
1	333 5040 205	1	HOUSING. SEC		

THIRD ANGLE PROJECTION



EXP NO.	
FIRST USED	02 - 02 - 956
	333 9111 287

SYM.	REVISIONS

THIS DOCUMENT CONTAINS INFORMATION THAT IS CONFIDENTIAL AND PROPRIETARY TO PARKER HANNIFIN CORPORATION (PARKER). THIS DOCUMENT IS FURNISHED ON THE UNDERSTANDING THAT THE DOCUMENT AND INFORMATION WILL BE NOT COPIED OR DISCLOSED TO OTHERS OR USED FOR ANY PURPOSE OTHER THAN CONDUCTING BUSINESS WITH PARKER AND WILL BE RETURNED AND ALL FURTHER USE DISCONTINUED UPON REQUEST BY PARKER. ALL RIGHTS RESERVED.

PGP517A0280CT1D7NL3L2B1B1

MATERIAL	ADM CTR P
H.E.-STD:	REV DTE 000000
	WT

DIMENSIONS ARE MM

Parker Hydraulic Controls Division
Sachsenhydraulik GmbH Chemnitz

DR BY	DATE	CH BY	DATE	SCALE
PG	25FEB02	WS	25FEB02	1/2

333 9111 287

© 2002 Parker-Hannifin Corporation