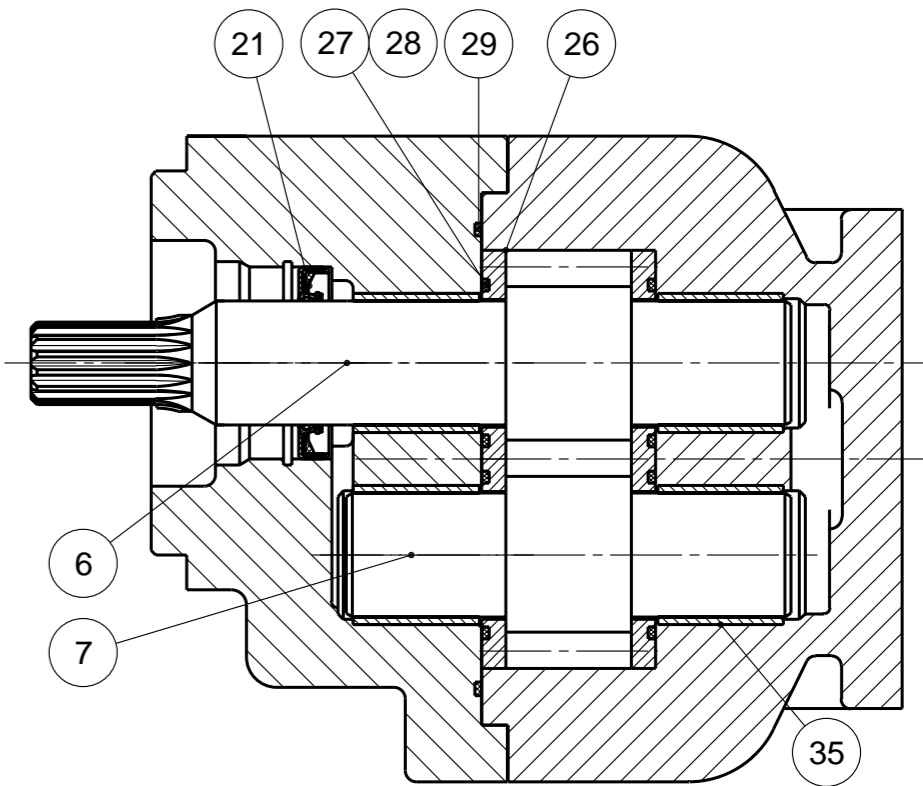
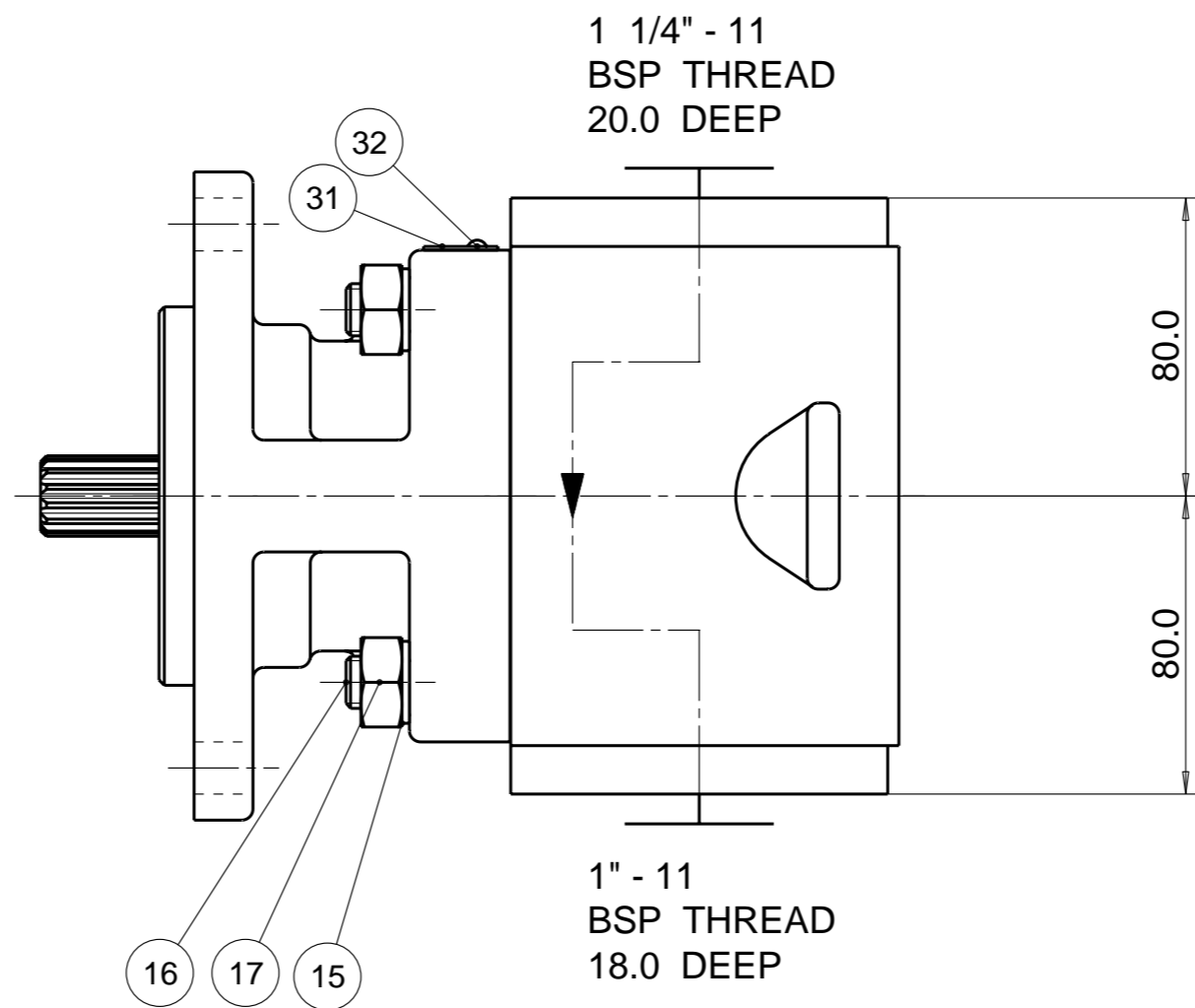
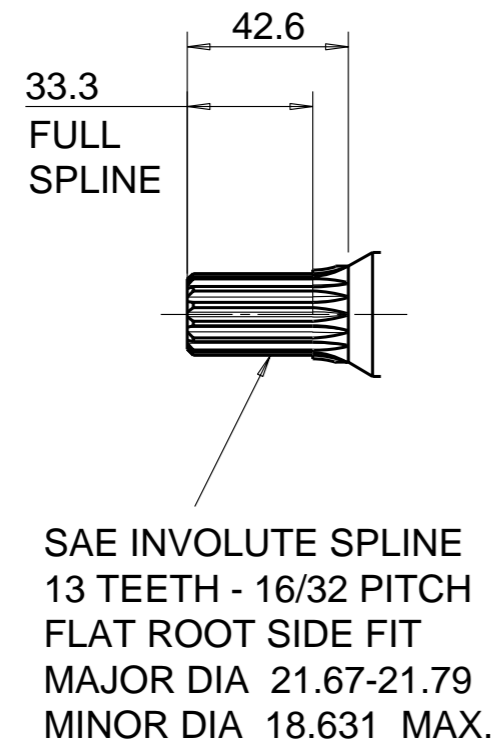


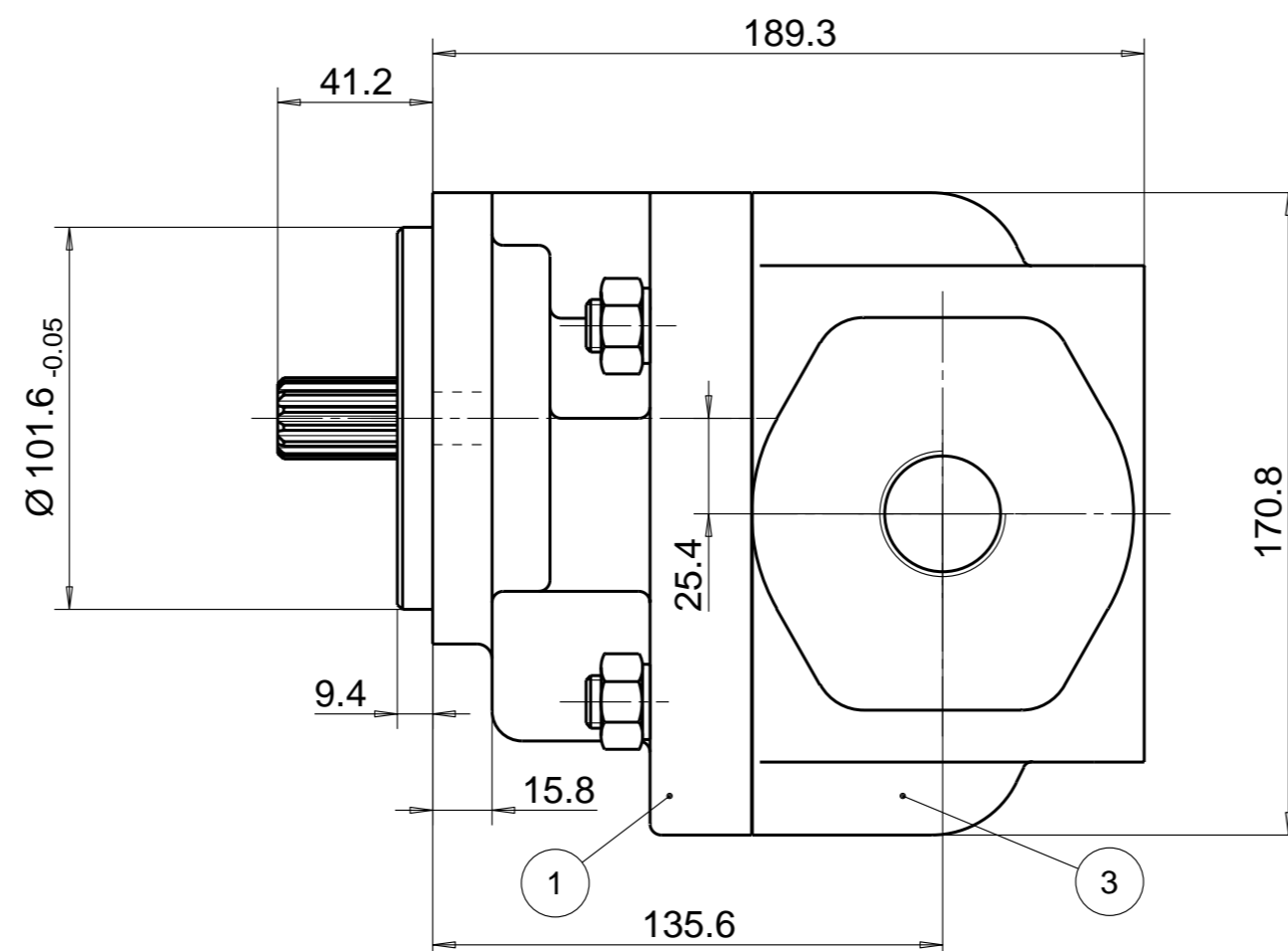
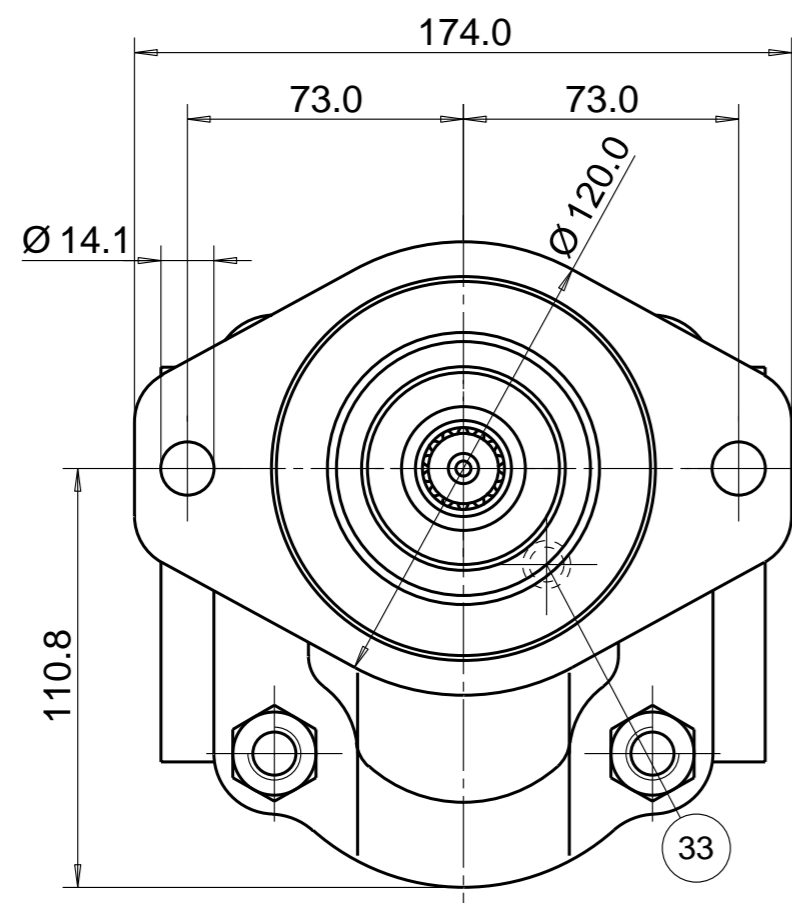
PUMP DATA	
DISPLACEMENT	50,0 ccm
MAX. PRESSURE	310 bar
SPEED RATE	500 TO 2200 min ⁻¹
MAX. INPUT SHAFT TORQUE	328 Nm
ROTATION	CLOCKWISE



NOTE

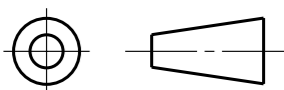
- 1 FOR ASSEMBLY INSTRUCTIONS SEE DWG. NO. "640-B1" "PGP640 PUMP ASSEMBLY INSTRUCTIONS".
- 2 NAMEPLATE LOCATION MAY VARY DUE TO DESIGN CRITERIA OR MANUFACTURING LOCATION. STICKER OPTIONAL FOR #31 & #32

28	391 2882 491	2	SEAL, BK-UP	36			
27	391 2882 490	2	SEAL. CHANN	35	391 0482 232	4	BUSH
26	391 2185 143	2	THR. PLATE	34			
25				33	391 2286 004	1	PLUG
24				32	391 1432 004	2	SCREW. DR.
23				31	391 2183 227	1	NAMEPLATE
22				30			
21	391 2883 103	1	SEAL. LIP	29	391 2881 611	1	SEAL. SECT.



20							
19							
18							
17	391 1451 240	4	M14 NUT				
16	391 1425 689	4	M14 SCREW				
15	391 3782 329	4	WASHER				
14							
13							
12							
11							
10							
9							
8							
7	704 2750 000	1	DRIVEN GEAR				
6	704 1150 400	1	DRIVE GEAR				
5							
4							
3	704 8150 428	1	BODY				
2							
1	704 5421 000	1	FLANGE				

THIRD ANGLE PROJECTION



EXP NO.

FIRST USED

12 - 12 - 620

704 9111 114

SYM.

REVISIONS

WITH EXCEPTION OF DRIVE SHAFT, FLANGE SPIGOT AND MTG. FACE PLUS AREAS AROUND PORTS, ALL SURFACES ARE PAINTED BLACK ZSS - A1 (AA-O-05.2)

THIS DOCUMENT CONTAINS INFORMATION THAT IS CONFIDENTIAL AND PROPRIETARY TO PARKER-HANNIFIN CORPORATION ("PARKER"). THIS DOCUMENT IS FURNISHED ON THE UNDERSTANDING THAT THE DOCUMENT AND THE INFORMATION IT CONTAINS WILL NOT BE COPIED OR DISCLOSED TO OTHERS OR USED FOR ANY PURPOSE OTHER THAN CONDUCTING BUSINESS WITH PARKER, AND WILL BE RETURNED AND ALL FURTHER USE DISCONTINUED UPON REQUEST BY PARKER. ALL RIGHTS RESERVED.

PGP640A0500CD1H3NE7E6B1B1

MATERIAL

ADM CTR P
REV DTE 000000

H.E.-STD:

WT 22 kg

DIMENSIONS ARE MM

Parker Pump & Motor Division
Chemnitz

DR. BY	DATE	CH. BY	DATE	SCALE
JS	20DEC12	AM	20DEC12	1/2

704 9111 114

© 2012 Parker Hannifin Corporation