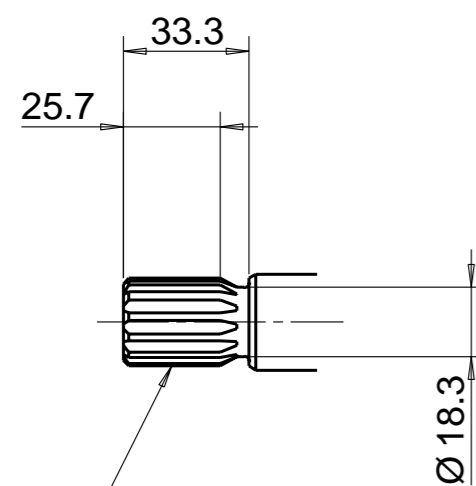
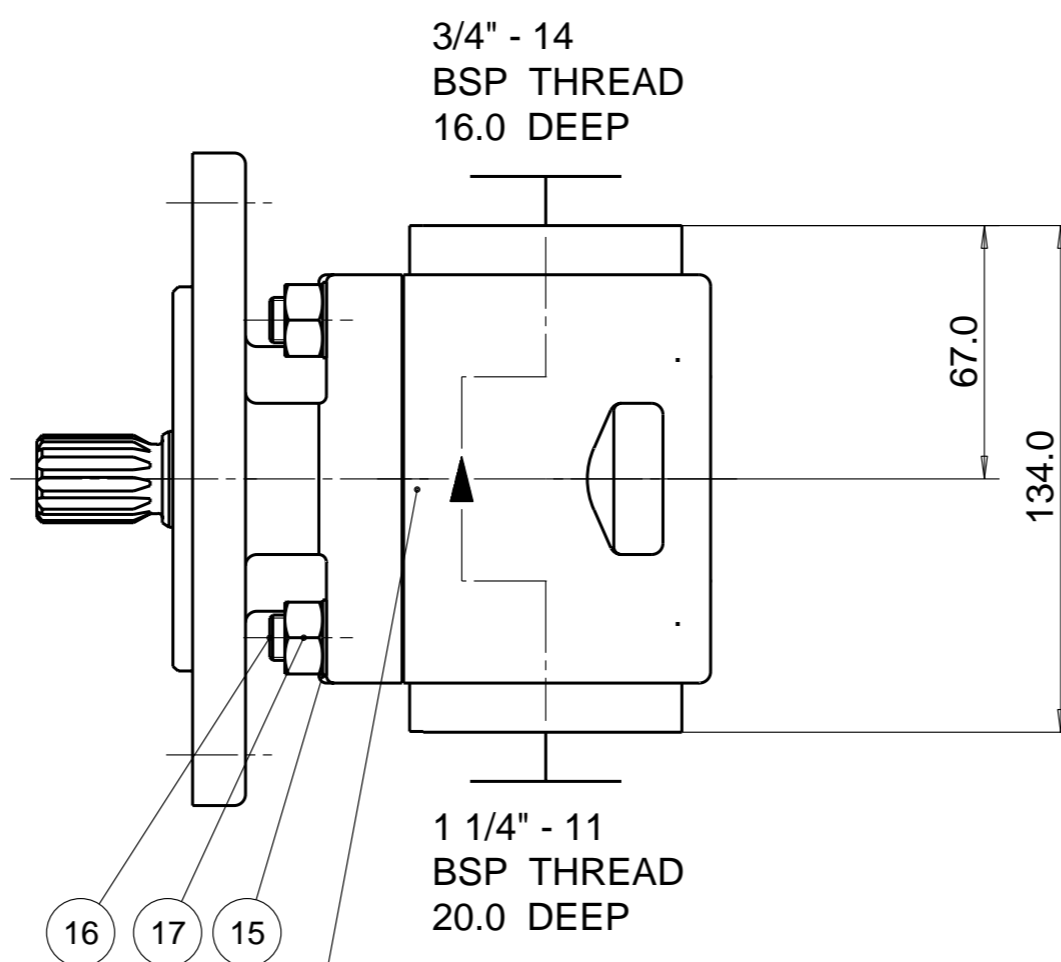
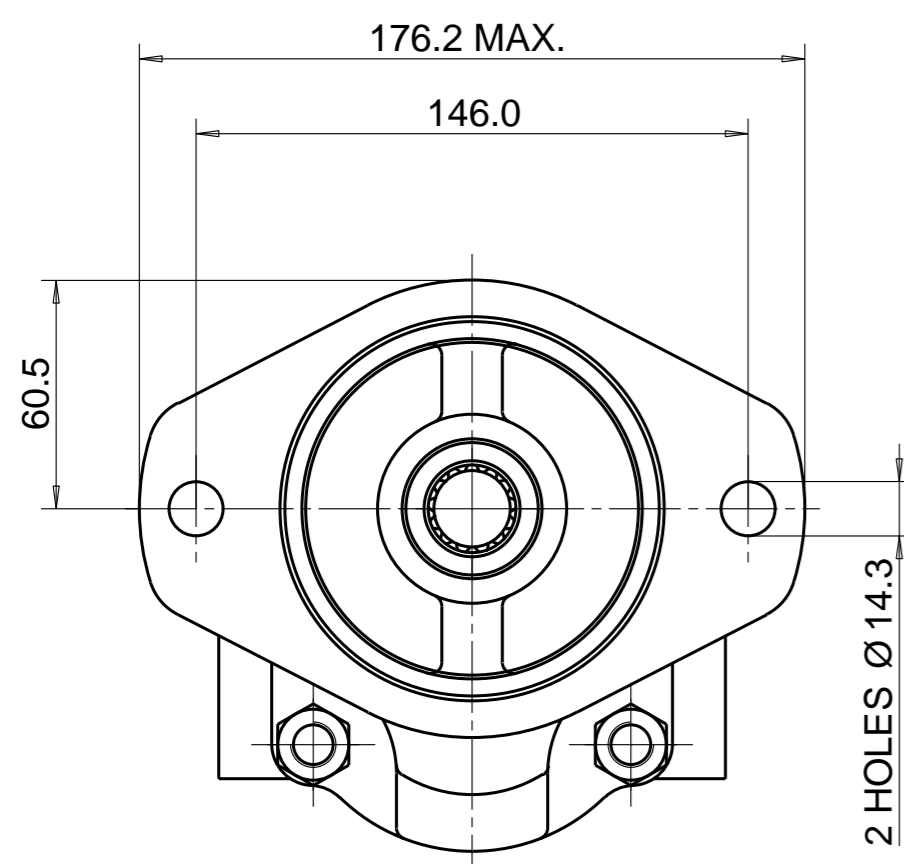


PUMP DATA	
DISPLACEMENT	29,0 ccm
MAX. PRESSURE	275 bar
SPEED RATE	500 TO 3000 min ⁻¹
MAX. INPUT SHAFT TORQUE	272 Nm
ROTATION	ANTI CLOCKWISE

SEAL KIT
8682-023-00V

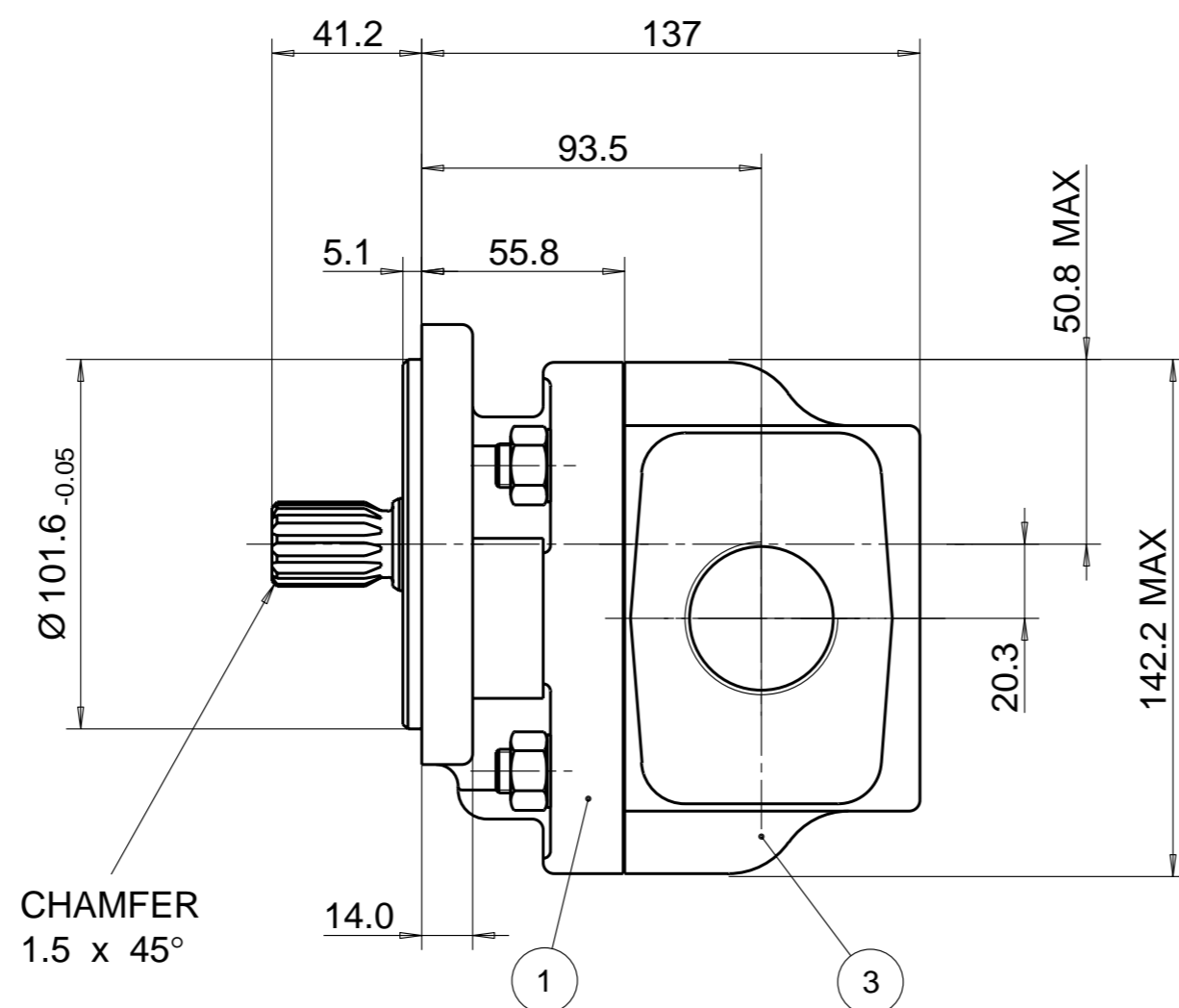


SAE INVOLUTE SPLINE
13 TEETH - 16/32 PITCH
FLAT ROOT SIDE FIT
MAJOR DIA 21.67-21.79
MINOR DIA 18.631 MAX.

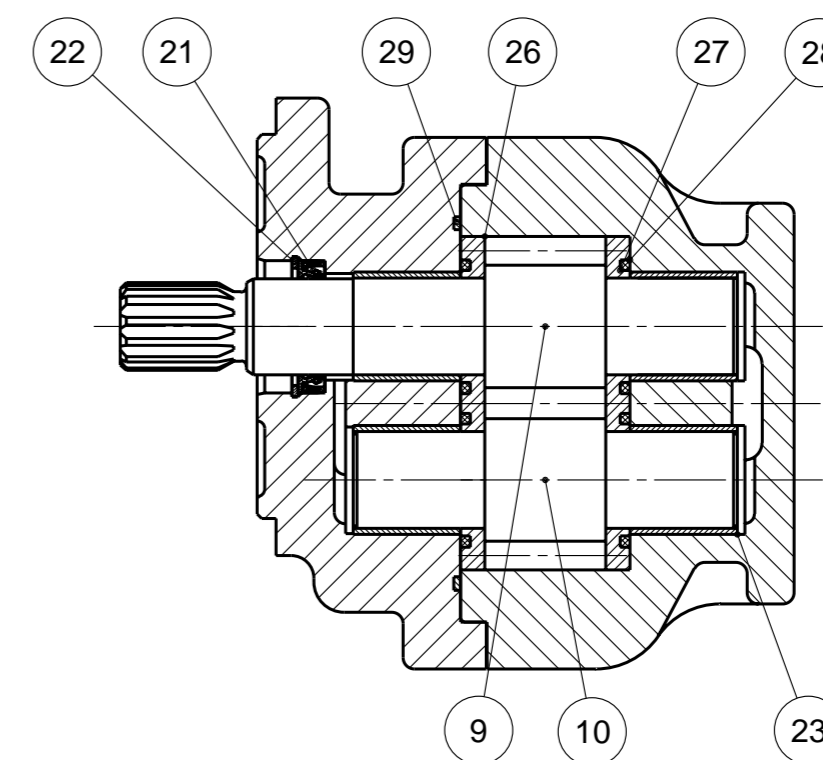


1 1/4" - 11
BSP THREAD
20.0 DEEP

UNIT IDENTIFICATION



CHAMFER
1.5 x 45°



NOTE

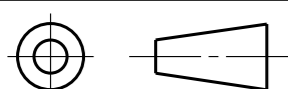
- 1 FOR ASSEMBLY INSTRUCTIONS SEE DWG. NO. "620-B1" "PGP620 PUMP ASSEMBLY INSTRUCTIONS".
- 2 NAMEPLATE LOCATION MAY VARY DUE TO DESIGN CRITERIA OR MANUFACTURING LOCATION.

ITEM	PART NO	REQD	DESCRIPTION	ITEM	PART NO	REQD	DESCRIPTION
28	8682-015-00Q	2	SEAL. ELEM.	36			
27	8682-016-00L	2	SEAL. ENERG	35			
26	391 2185 150	2	BAL. PLATE	34			
25				33			
24				32			
23	391 0482 237	4	BUSH	31			
22	9211-530-006	1	CIRCLIP	30			
21	8682-119-00W	1	SEAL. LIP	29	9312-641-004	1	SEAL. SECT.

ITEM	PART NO	REQ'D	DESCRIPTION
20			
19			
18			
17	391 1451 149	4	M12 NUT
16	8682-007-00M	4	M12 SCREW
15	9222-575-009	4	WASHER
14			
13			
12			
11			
10	702 2729 000	1	DRIVEN GEAR
9	702 1129 400	1	DRIVE GEAR
8			
7			
6			
5			
4			
3	702 8129 419	1	BODY
2			
1	2PRF02S1R	1	FLANGE

WITH EXCEPTION OF DRIVE SHAFT, FLANGE SPIGOT AND MTG. FACE
PLUS AREAS AROUND PORTS, ALL SURFACES ARE PAINTED
BLACK ZSS - A1 (AA-O-05.2)

THIRD ANGLE PROJECTION



EXP NO.

FIRST USED

17 - 07 - 613

702 9112 216

SYM.

REVISIONS

THIS DOCUMENT CONTAINS INFORMATION THAT IS CONFIDENTIAL AND PROPRIETARY TO PARKER-HANNIFIN CORPORATION ("PARKER"). THIS DOCUMENT IS FURNISHED ON THE UNDERSTANDING THAT THE DOCUMENT AND THE INFORMATION IT CONTAINS WILL NOT BE COPIED OR DISCLOSED TO OTHERS OR USED FOR ANY PURPOSE OTHER THAN CONDUCTING BUSINESS WITH PARKER, AND WILL BE RETURNED AND ALL FURTHER USE DISCONTINUED UPON REQUEST BY PARKER. ALL RIGHTS RESERVED.

PGP620A0290AD1H3VE7E5B1B1

MATERIAL

ADM CTR P
REV DTE 000000

H.E.-STD:

WT 12.6 kg

TOLERANCES UNLESS OTHERWISE SPECIFIED
= REF. DIMENSIONS

DIMENSIONS ARE MM

Parker Pump & Motor Division
Chemnitz

DR.BY DATE CH.BY DATE SCALE
JS 31JUL17 AS 02AUG17 1/2

702 9112 216

© 2017 Parker Hannifin Corporation