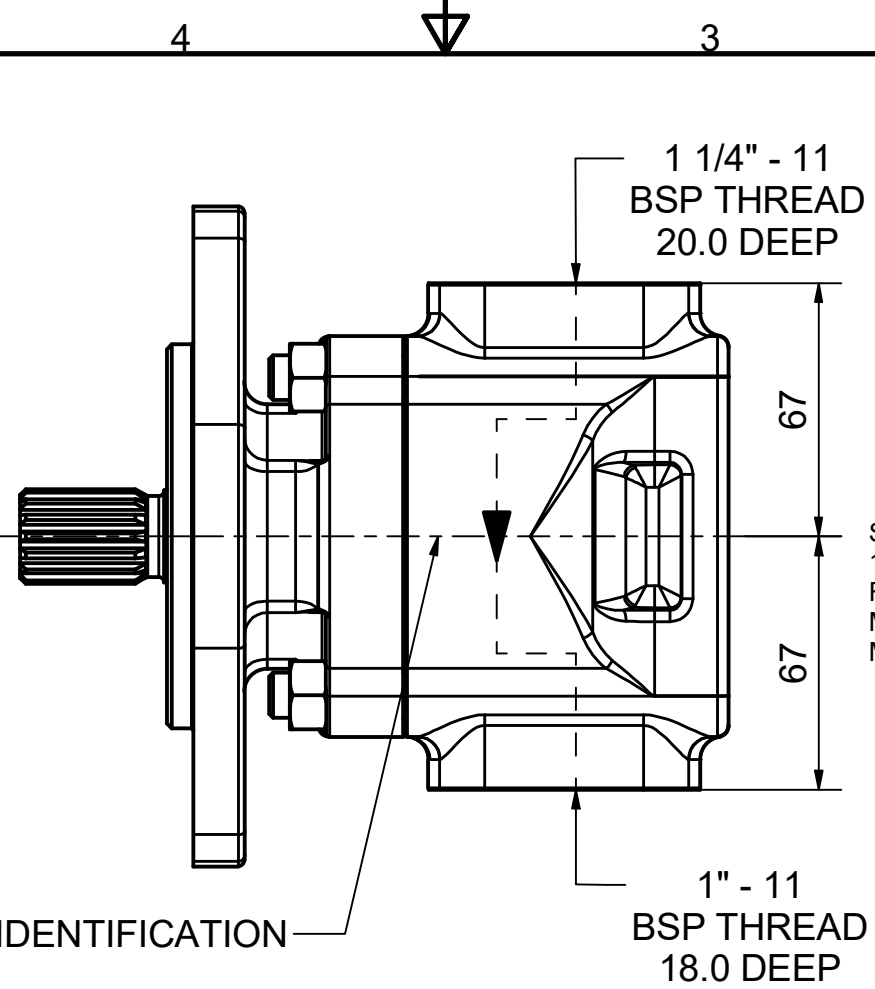
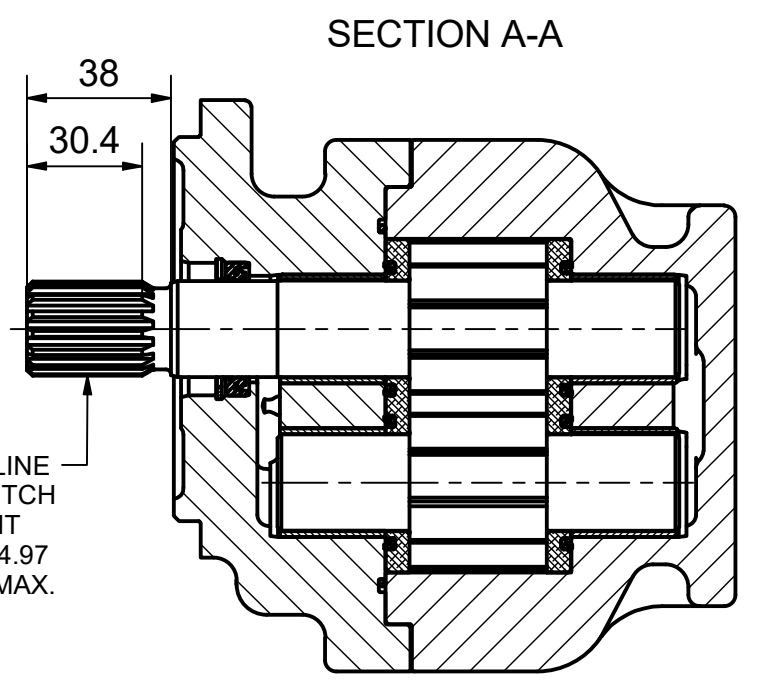


PUMP DATA		
DISPLACEMENT	33	ccm
MAXIMUM PRESSURE	275	bar
SPEED RATE	500 TO 3000	rpm
MAX. INPUT SHAFT TORQUE	460	Nm
ROTATION	CLOCKWISE	

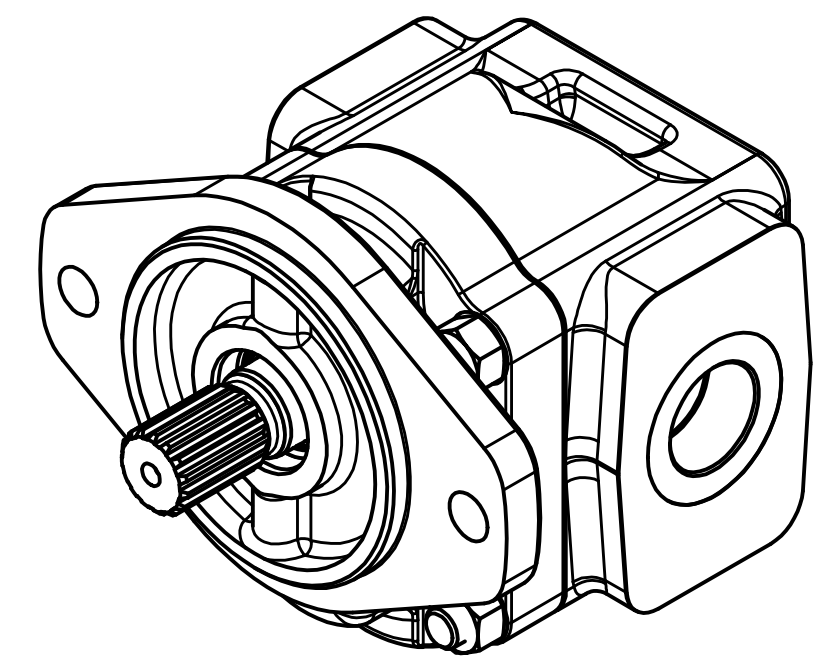
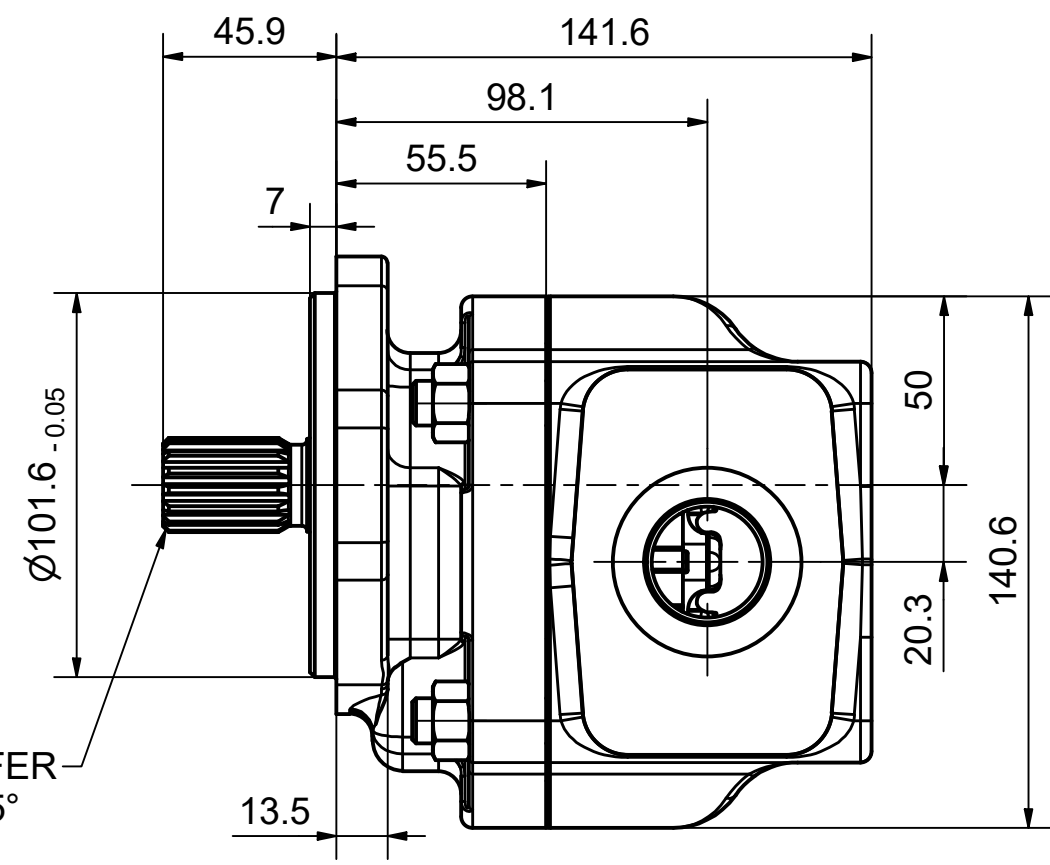
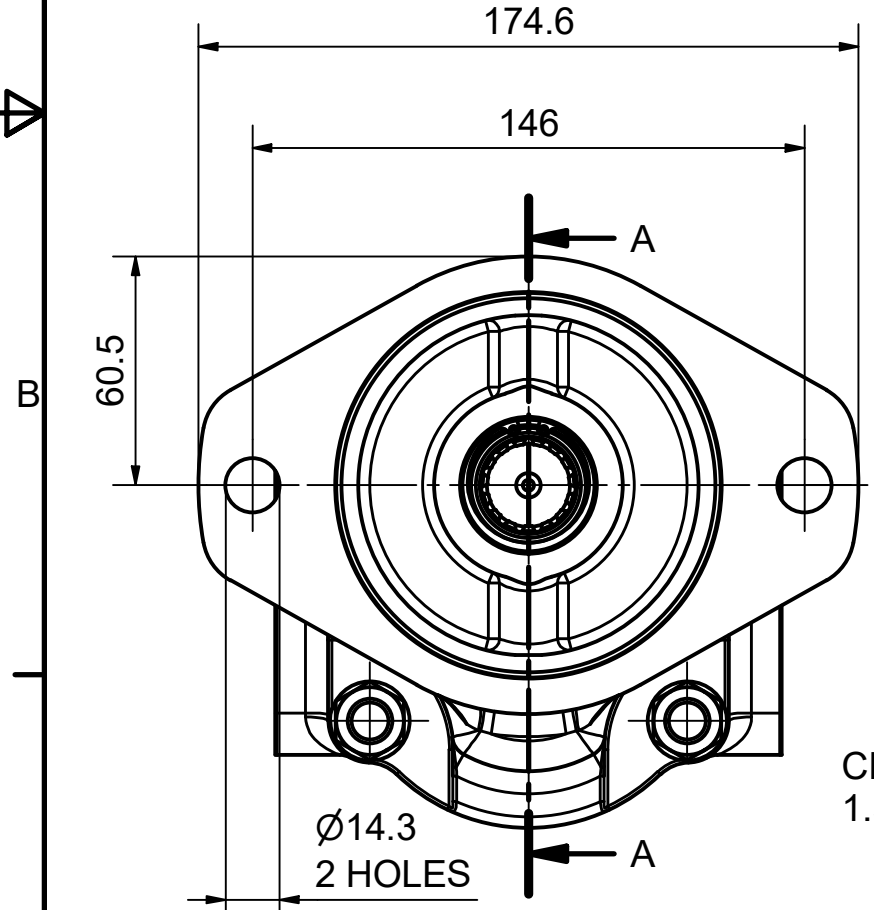


SAE INVOLUTE SPLINE
 15 TEETH - 16/32 PITCH
 FLAT ROOT SIDE FIT
 MAJOR DIA 24.87-24.97
 MINOR DIA 21.793 MAX.



NOTE:
 1 FOR ASSEMBLY INSTRUCTIONS, SEE dwg. "620-B1" "PGP620 ASSEMBLY INSTRUCTIONS".

2 NAMEPLATE LOCATION MAY VARY DUE TO DESIGN CRITERIA OR MANUFACTURING LOCATION



ALL SURFACES MUST BE PAINTED, EXCEPT:
 - FLANGE SPIGOT, MOUNTING FACE AND DRIVE SHAFT
 - PORT AREAS AND SEAL FACES,
 - NAMEPLATES WITHOUT PAINT PROTECTION FILM
 COLOR: BLACK (RAL 9005) SEE ZSS - A1

SEWR-NR:
21-04-603

TOLERANCES UNLESS OTHERWISE SPECIFIED = REF. DIMENSIONS

Parker PARKER HANNIFIN CORPORATION			
PUMP AND MOTOR DIVISION EUROPE Neefestraße 96 Chemnitz 09116			
DESCRIPTION PGP620A0330CE1H3VE7E6B1B1			
ECO 0361870	DRAWN BY as599145	DATE 07.04.2021	Material
ECO DATE 07.04.2021	CHECKED BY SS	APPROVED BY SS	DRAWING NO. 7029111394
THIRD ANGLE PROJECTION	UNITS MM	MASS 12,3 kg	REV. -
	SHEET 1 OF 1	SCALE 1:2	
<small>THIS DOCUMENT AND THE INFORMATION IT CONTAINS IS CONFIDENTIAL AND PROPRIETARY TO PARKER-HANNIFIN CORPORATION AND ITS AFFILIATES ("PARKER"), MAY NOT BE COPIED OR DISCLOSED TO OTHERS OR USED FOR ANY PURPOSE OTHER THAN CONDUCTING BUSINESS WITH PARKER, AND MUST BE RETURNED OR DESTROYED AND ALL FURTHER USE DISCONTINUED AT PARKER'S REQUEST. THE RECIPIENT OF THIS DOCUMENT IS ADVISED THAT IMPROPER SELECTION OR IMPROPER USE OF PARKER SYSTEMS OR COMPONENTS CAN CAUSE DEATH, PERSONAL INJURY AND PROPERTY DAMAGE, AND IS SOLELY RESPONSIBLE THROUGH ITS OWN ANALYSIS AND TESTING FOR THE FINAL SELECTION OF PARKER SYSTEM AND COMPONENTS AND ASSURING THAT ALL PERFORMANCE, ENDURANCE, MAINTENANCE, SAFETY AND WARNING REQUIREMENTS OF THE INTENDED APPLICATION ARE MET. COPYRIGHT PARKER. YEAR OF COPYRIGHT IS THE YEAR(S) INDICATED ON THIS DOCUMENT. ALL RIGHTS RESERVED.</small>			