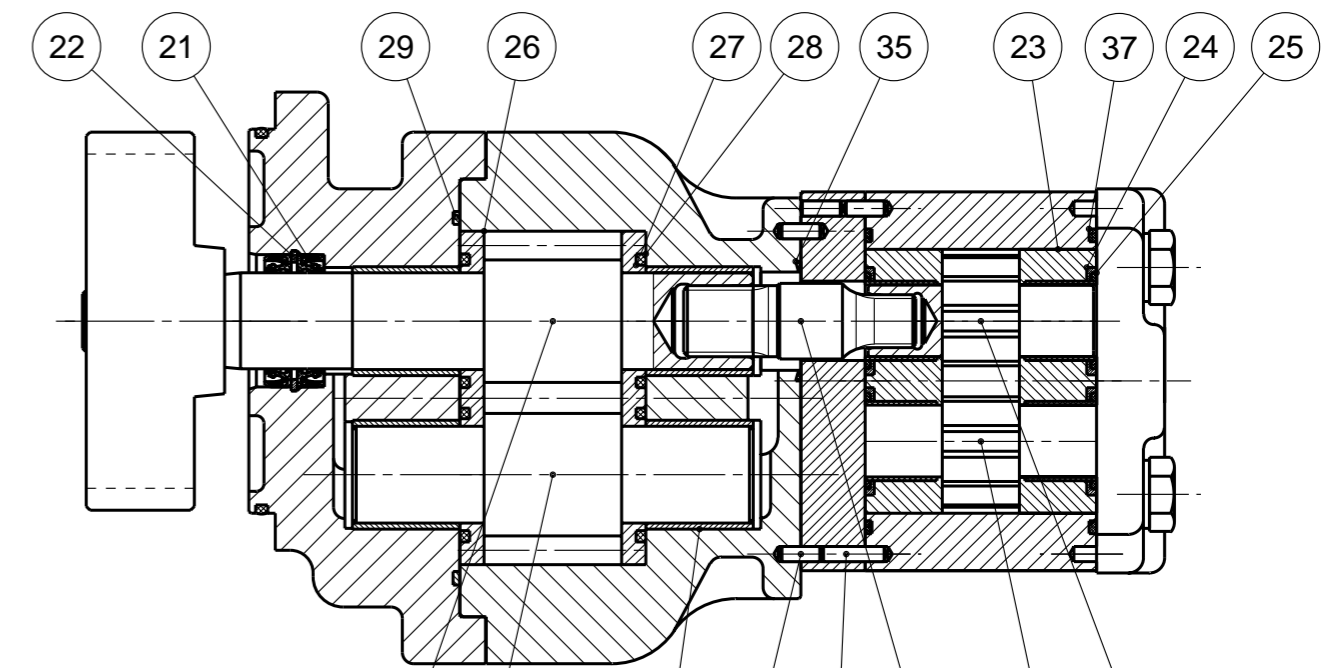
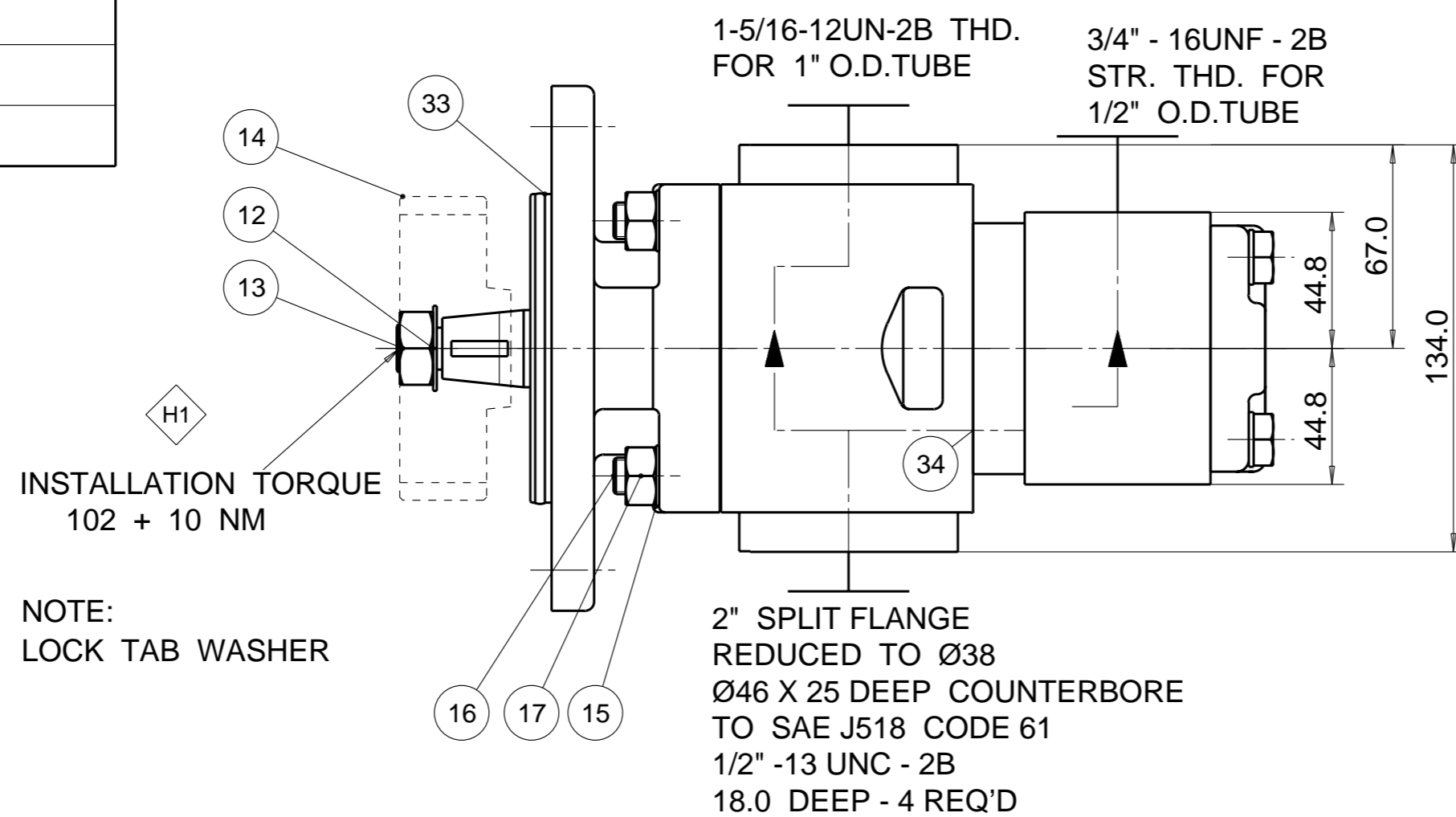
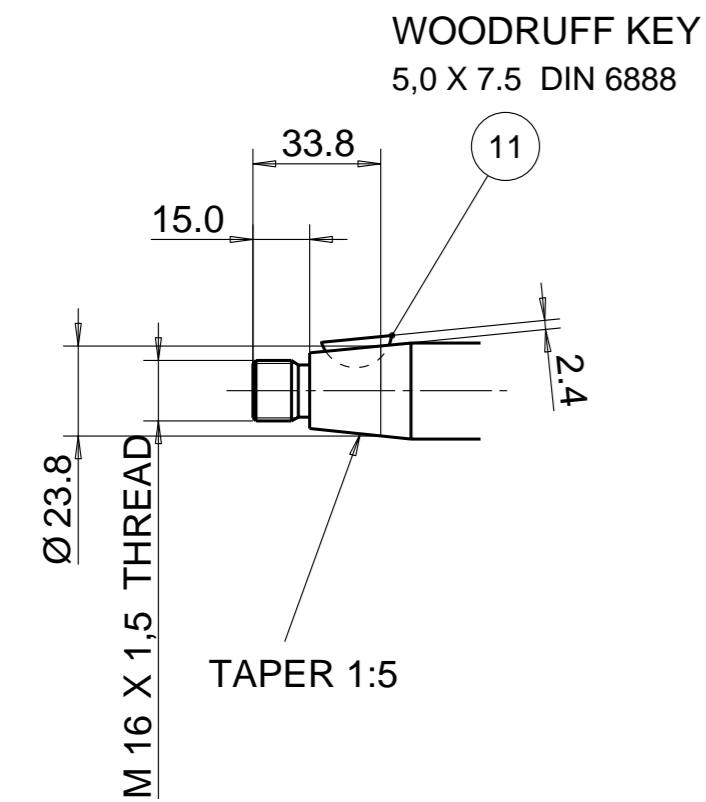


PUMP DATA	PUMP I	PUMP II
DISPLACEMENT	33.0 ccm	13.0 ccm
MAX. PRESSURE	275 bar	250 bar
SPEED RATE	500 TO 2700 min ⁻¹	
MAX. INPUT SHAFT TORQUE	301 Nm	
ROTATION	ANTI CLOCKWISE	

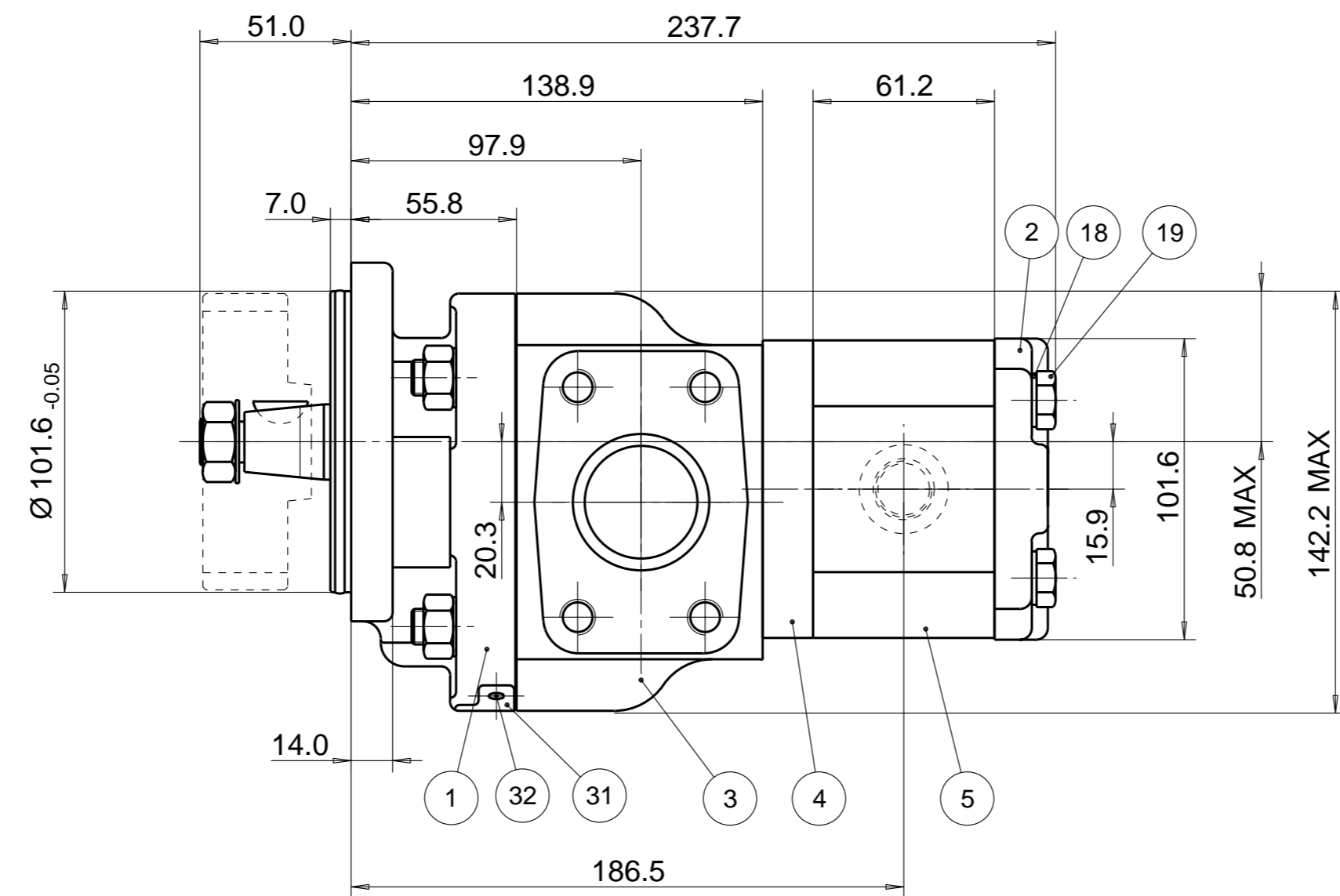
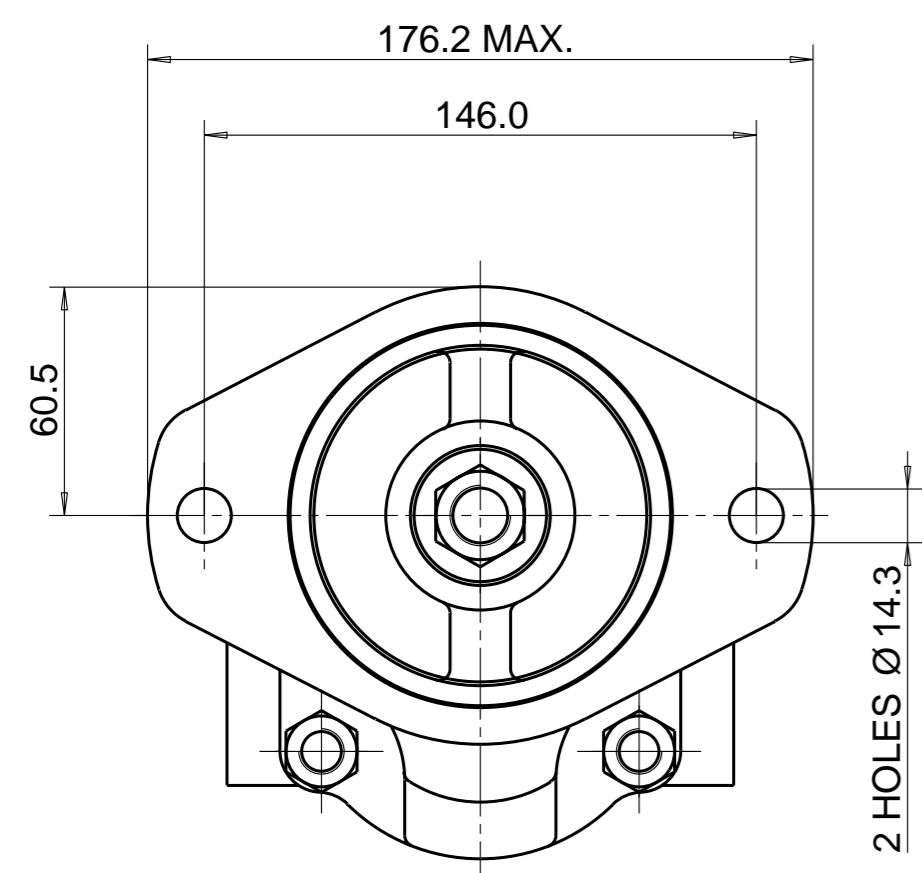
CUSTOMER PART NUMBER:
20/925647



NOTE

1 FOR ASSEMBLY INSTRUCTIONS SEE DWG. NO. "620-B1" and "511-B1" "PGP620 and PGP511 PUMP ASSEMBLY INSTRUCTIONS".

2 NAMEPLATE LOCATION MAY VARY DUE TO DESIGN CRITERIA OR MANUFACTURING LOCATION. STICKER OPTIONAL FOR #31 & #32



ITEM	PART NO	REQD	ITEM	PART NO	REQD
			37	9313-145-00B	2 O-RING
28	8682-015-00Q	2 SEAL. ELEM.	36	73330:4106685	1 COUPLING
27	8682-016-00L	2 SEAL. ENERG	35	9313-024-00W	1 O-RING
26	8682-058-00M	2 BAL. PLATE	34	9313-019-00G	1 O-RING
25	8611-015-000	2 SEAL,BK UP	33	391 2882 499	1 O-RING
24	8611-016-00R	2 SEAL,ELEM.	32	391 1432 004	2 SCREW. DR.
23	8898-207-00U	2 BUSH,BLOCK	31	391 2183 227	1 NAMEPLATE
22	9211-530-006	1 CIRCLIP	30	391 2080 078	4 PIN, DOWEL
21	8682-119-00W	2 SEAL. LIP	29	9312-641-004	1 SEAL. SECT.

ITEM	PART NO	REQD	DESCRIPTION
20	391 2080 079	1	PIN, DOWEL
19	391 1401 860	4	SCREW (108MM)
18	391 3782 231	4	WASHER
17	391 1451 149	4	M12 NUT
16	8682-007-00M	4	M12 SCREW
15	9222-575-009	4	WASHER
14	320-08031	1	GEAR JCB
13	9116-004-009	1	NUT
12	8682-010-00F	1	WASHER
11	391 1781 095	1	KEY
10	334 2713 000	1	DRIVEN GEAR
9	334 2613 000	1	DRIVE GEAR
8	2PRG033-C1C1F	1	DRIVEN GEAR
7	702 1933 802	1	DRIVE GEAR
6	8682-018-00C	4	BUSH
5	334 8613 303	1	GEAR HOUSING
4	391 2183 361	1	SPACER
3	702 7933 005	1	BODY
2	334 3000 100	1	PECOV
1	77020:4118583	1	FLANGE

30MAY06 WS 06-05-630
18OCT05 WS 43693
30MAY05 WS 43666
01DEC04 JS 43617
04NOV04 JS 04-11-610
01JUN04 JS 04-06-601

THIRD ANGLE PROJECTION
EXP NO.
FIRST USED
04 - 05 - 618
702 9522 013

WITH EXCEPTION OF DRIVE SHAFT, FLANGE SPIGOT AND MTG. FACE PLUS AREAS AROUND PORTS, ALL SURFACES ARE PAINTED BLACK ZSS - A1 (AA-O-05.2)

H1	INSTALLATION TORQUE 102+10Nm WAS 75+10Nm
SYM.	REVISIONS 24APR12 RP 12-04-612

THIS DOCUMENT CONTAINS INFORMATION THAT IS CONFIDENTIAL AND PROPRIETARY TO PARKER-HANNIFIN CORPORATION ("PARKER"). THIS DOCUMENT IS FURNISHED ON THE UNDERSTANDING THAT THE DOCUMENT AND THE INFORMATION IT CONTAINS WILL NOT BE COPIED OR DISCLOSED TO OTHERS OR USED FOR ANY PURPOSE OTHER THAN CONDUCTING BUSINESS WITH PARKER AND WILL BE RETURNED AND ALL FURTHER USE DISCONTINUED UPON REQUEST BY PARKER. ALL RIGHTS RESERVED.		
PGP620B0330AT2K5WS7D6C-511A0130XB1D3B1B1		
MATERIAL	ADM CTR P	DR.BY DATE CH.BY DATE SCALE
H.E.-STD:	REV DTE 24APR12	JS 27MAY04 UH 27MAY04 1/2
	WT 16.4 kg	702 9522 013
	DIMENSIONS ARE MM	© 2012 Parker-Hannifin Corporation

Parker Pump & Motor Division
Chemnitz