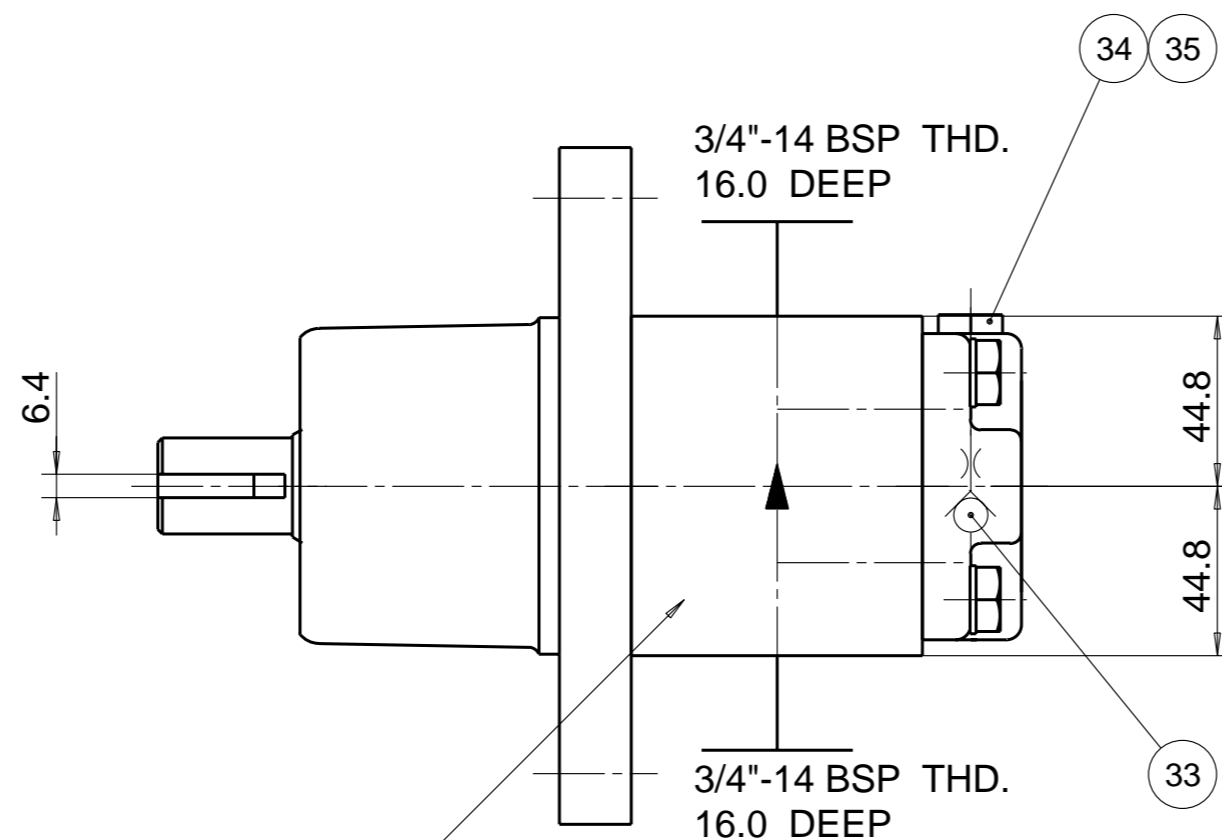
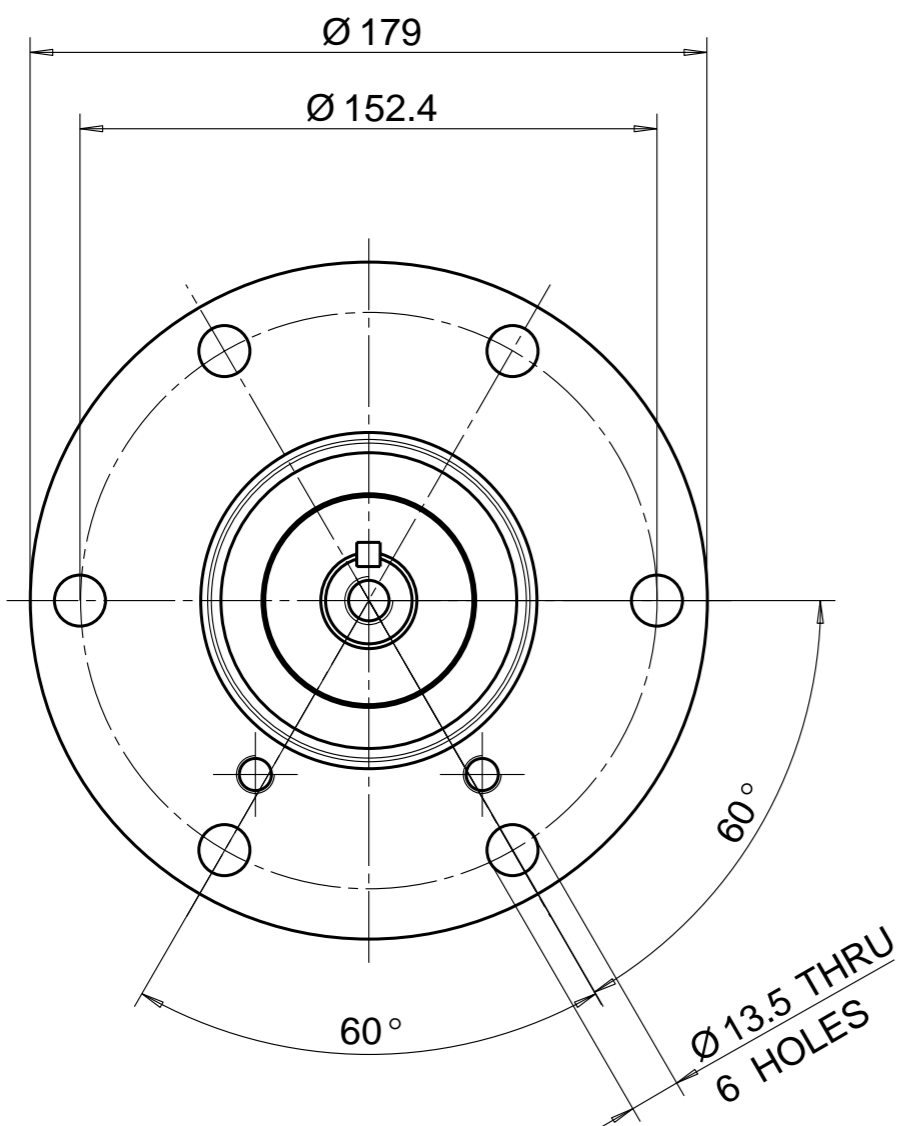
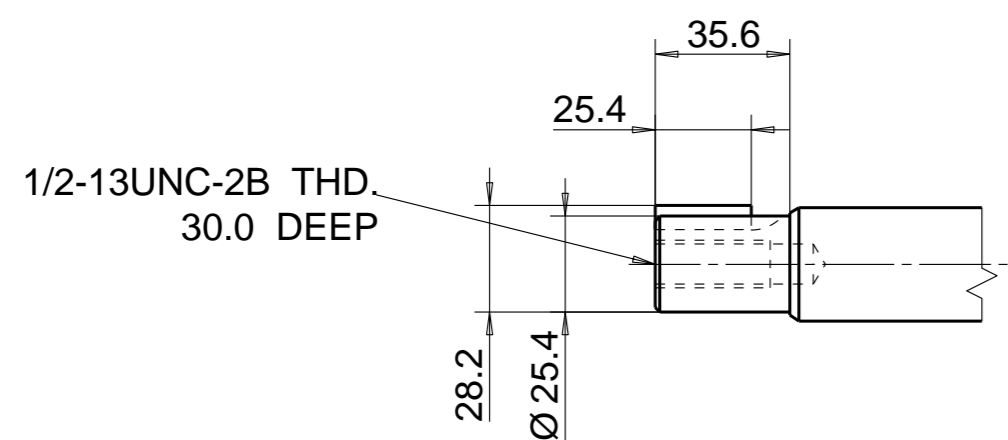
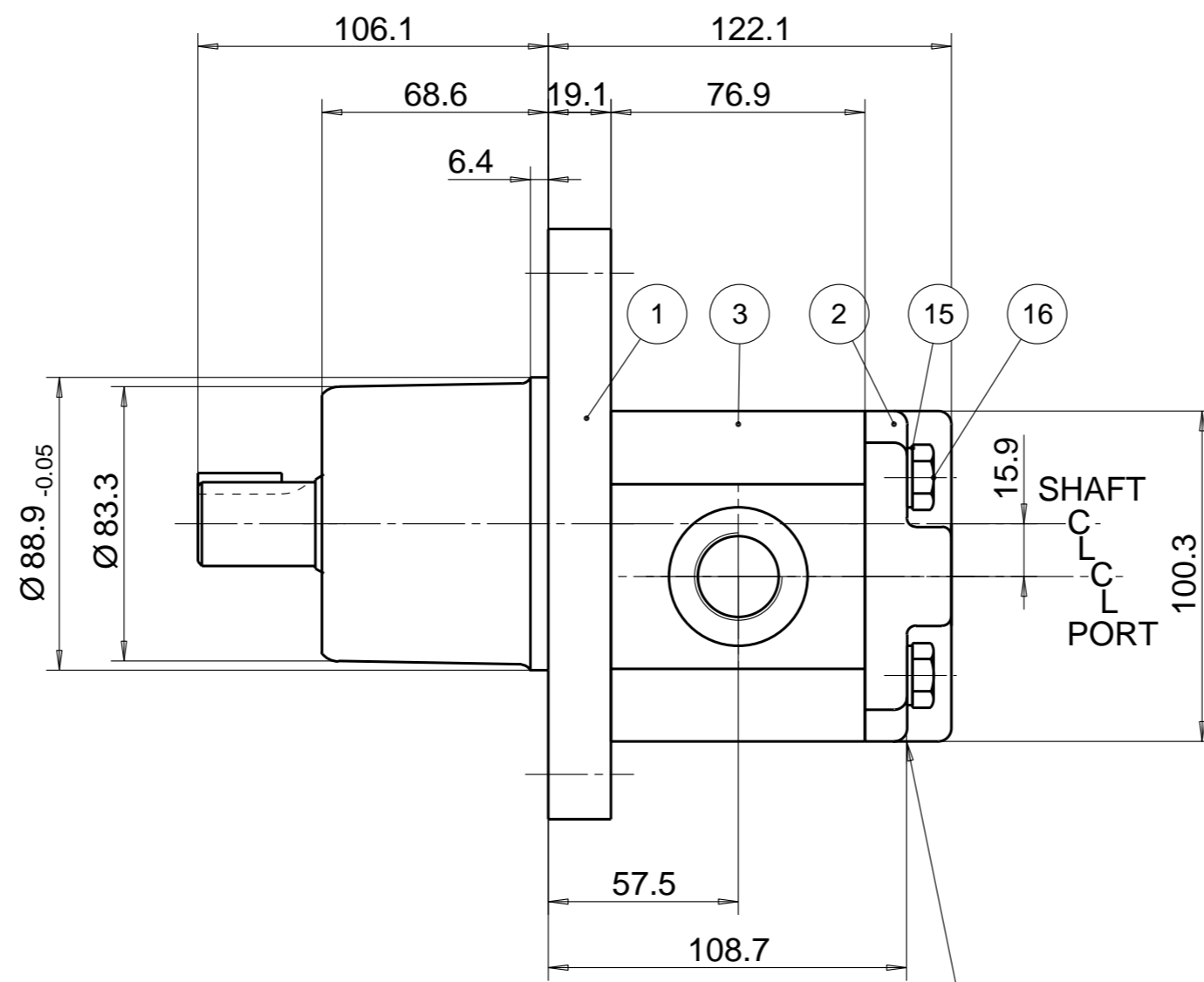


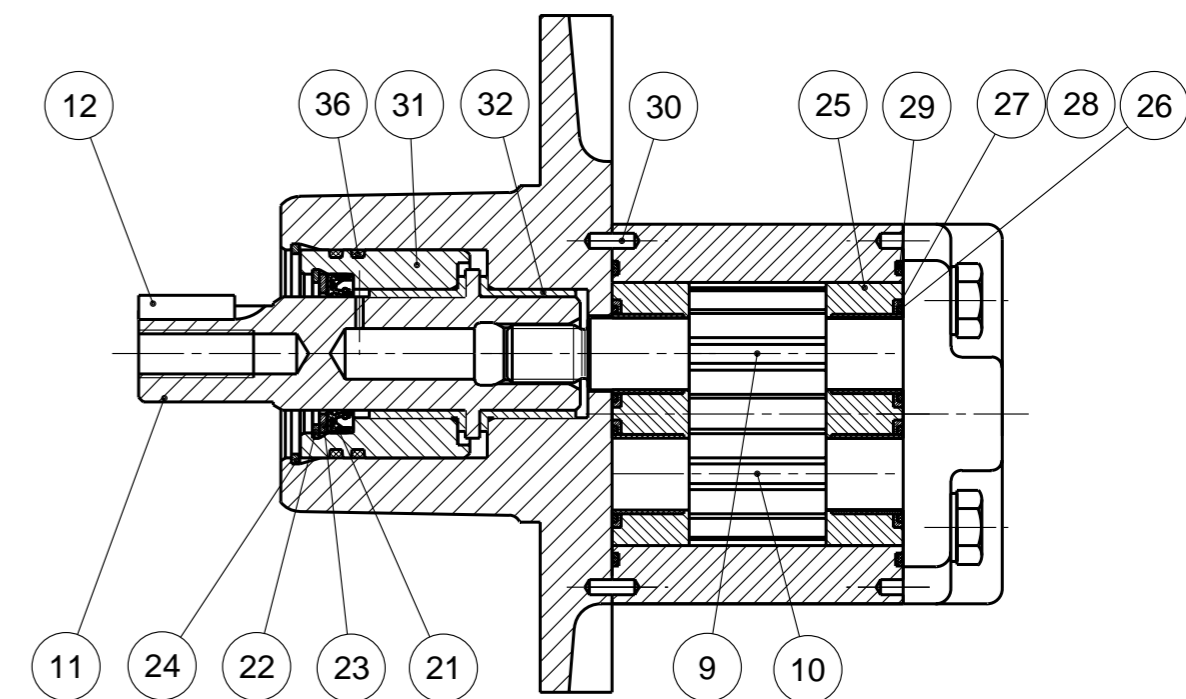
MOTOR DATA	
DISPLACEMENT	23,0 ccm
MAX.CONT.PRESSURE	190 bar
SPEED RATE	500 TO 3000 min <sup>-1</sup>
MAX. SHAFT SEAL PRESSURE	2 bar
ROTATION	ANTI CLOCKWISE



UNIT IDENTIFICATION ON GEAR HOUSING



EXTERNAL DRAIN 1/4"-19 BSP THD. 12.0 DEEP



**NOTE**

1 FOR ASSEMBLY INSTRUCTIONS SEE DWG. NO. "511-B2" "PGM511 MOTOR ASSEMBLY INSTRUCTIONS".

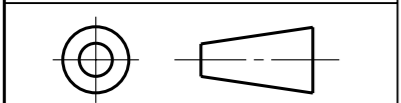
ITEM	PART NO	REQD	DESCRIPTION	ITEM	PART NO	REQD	DESCRIPTION
28	8301-016-0B9	4	SEAL. CHAN.	36	9313-135-00G	2	O-RING
27	8301-016-0AB	4	SEAL. CHAN.	35	9313-905-00C	1	O-RING
26	8301-015-006	2	SEAL. BK-UP	34	9163-224-ZPE	1	PLUG
25	391 2185 133	2	THRBLK/BSHG	33	8605-019-00N	1	CHECK, VALVE
24	9211-675-00J	1	RING, SNAP	32	9521-401-00H	2	FLANGED BUSH
23	9222-550-00A	1	WASHER	31	8664-002-00E	1	BRG. CARRIER
22	391 2681 569	1	RING, SNAP	30	391 2080 078	2	PIN. DOWEL
21	9411-409-00W	1	SEAL. LIP	29	9313-145-00B	2	SEAL. SECT.

◇ C

BOM. COMPONENT							
ITEM	PART NO	REQD	DESCRIPTION	ITEM	PART NO	REQD	DESCRIPTION
20							
19							
18							
17							
16	391 1401 634	4	SCREW (105 MM COATED)				
15	391 3782 231	4	WASHER				
14							
13							
12	9602-124-00D	1	KEY				
11	8772-004-003	1	EXTENSION SHAFT				
10	334 2723 000	1	DRIVEN GEAR				
9	334 1123 001	1	DRIVE GEAR				
8							
7							
6							
5							
4							
3	334 8523 416	1	HOUSING. GEAR				
2	1PXC07B1B1C2B1K	1	HOUSING. PEC				
1	334 5059 205	1	HOUSING. SEC				
ITEM	PART NO	REQD	DESCRIPTION	ITEM	PART NO	REQD	DESCRIPTION

02NOV06 WS 06-11-905

THIRD ANGLE PROJECTION



EXP NO.

FIRST USED

06 - 11 - 905

7603N

C SCREW 3911401634 (105 MM COATED) WAS 3911401546 (105 MM)

SYM. REVISIONS 11MAY07 JS 07-05-922

THIS DOCUMENT CONTAINS INFORMATION THAT IS CONFIDENTIAL AND PROPRIETARY TO PARKER HANNIFIN CORPORATION ("PARKER"). THIS DOCUMENT IS FURNISHED ON THE UNDERSTANDING THAT THE DOCUMENT AND INFORMATION WILL BE NOT COPIED OR DISCLOSED TO OTHERS OR USED FOR ANY PURPOSE OTHER THAN CONDUCTING BUSINESS WITH PARKER, AND WILL BE RETURNED AND ALL FURTHER USE DISCONTINUED UPON REQUEST BY PARKER. ALL RIGHTS RESERVED.

**PGM511D0230AZ2Z3NE5E5B1B1G2**

MATERIAL

H.E.-STD:

ADM CTR M  
REV DTE 11MAY07

WT

DIMENSIONS ARE MM

**Parker** Pump & Motor Division  
Chemnitz

DR. BY	DATE	CH. BY	DATE	SCALE
WS	02NOV06	JS	02NOV06	1/2

**7603N**

© 2007 Parker-Hannifin Corporation