

THIS IS SMART PUMP

Parker Gear Motor

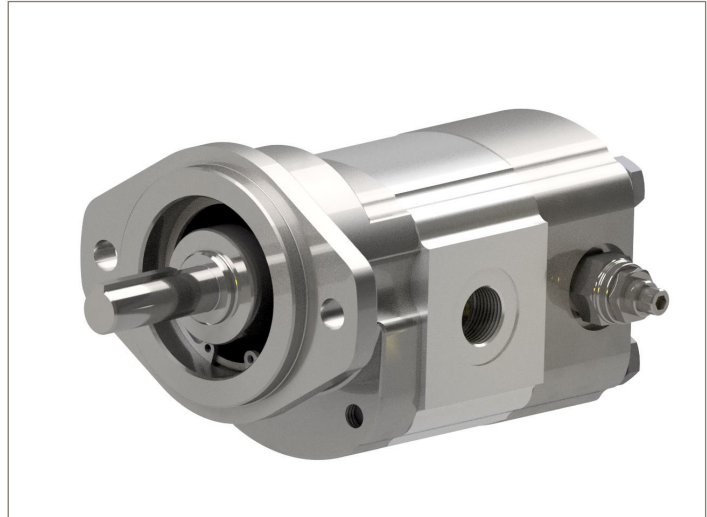
511

High Speed Performance

PGM511 high speed motors offer superior performance, high efficiency and with displacements ranging from 6.0 cc to 11.0 cc by a speed of 5.000 rpm. A wide variety of standard options is available to meet specific application requirements

Reduced Engine Emissions

Use less fuel. Runs at correct temperature. High speed fan only when required. Easier to meet Tier II & III engine emission standards. Cooling profiles – different machines or areas.



Increased System Cooling

- Cooling-on-demand – NO parasitic losses!
- Higher cooling at low or idle engine rpm.
- High power-to-weight ratio.
- Located anywhere on target application.
- Improved air-flow through radiator.
- Reversible – ‘purge’ clogged radiators.

Increase Vehicle Productivity

- Frees up horse power
- Reduced noise levels
- Less down-time
- Less costly system maintenance.
- NO pulleys / belts to tighten or replace.



THIS IS SMART PUMP

Parker Gear Motor

511



PGM511 Technical Specifications

		0060	0080	0100	0110
Pump Displacement	[cm ³ /rev]	6.0	8.0	10.0	11.0
Max. Continuous Pressure	[bar]	250			
Minimum Speed @ 0 Inlet & Max. outlet pressure	[rpm]	500			
Maximum Speed @ 0 Inlet & Max. outlet pressure	[rpm]	5000			
Pump Input Power @ Max. Pressure and 1500 rpm	[kW]	4.5	6.0	7.5	8.3
Approximate Weight	[kg]	3.40	3.47	3.55	3.57

© 2018 Parker Hannifin Corporation



Contact Information:

Parker Hannifin Manufacturing
Germany GmbH & Co. KG
Neefestrasse 96
09116 Chemnitz, Germany
phone: +49 (0)3 71/39 37-0
www.parker.com/PMDE