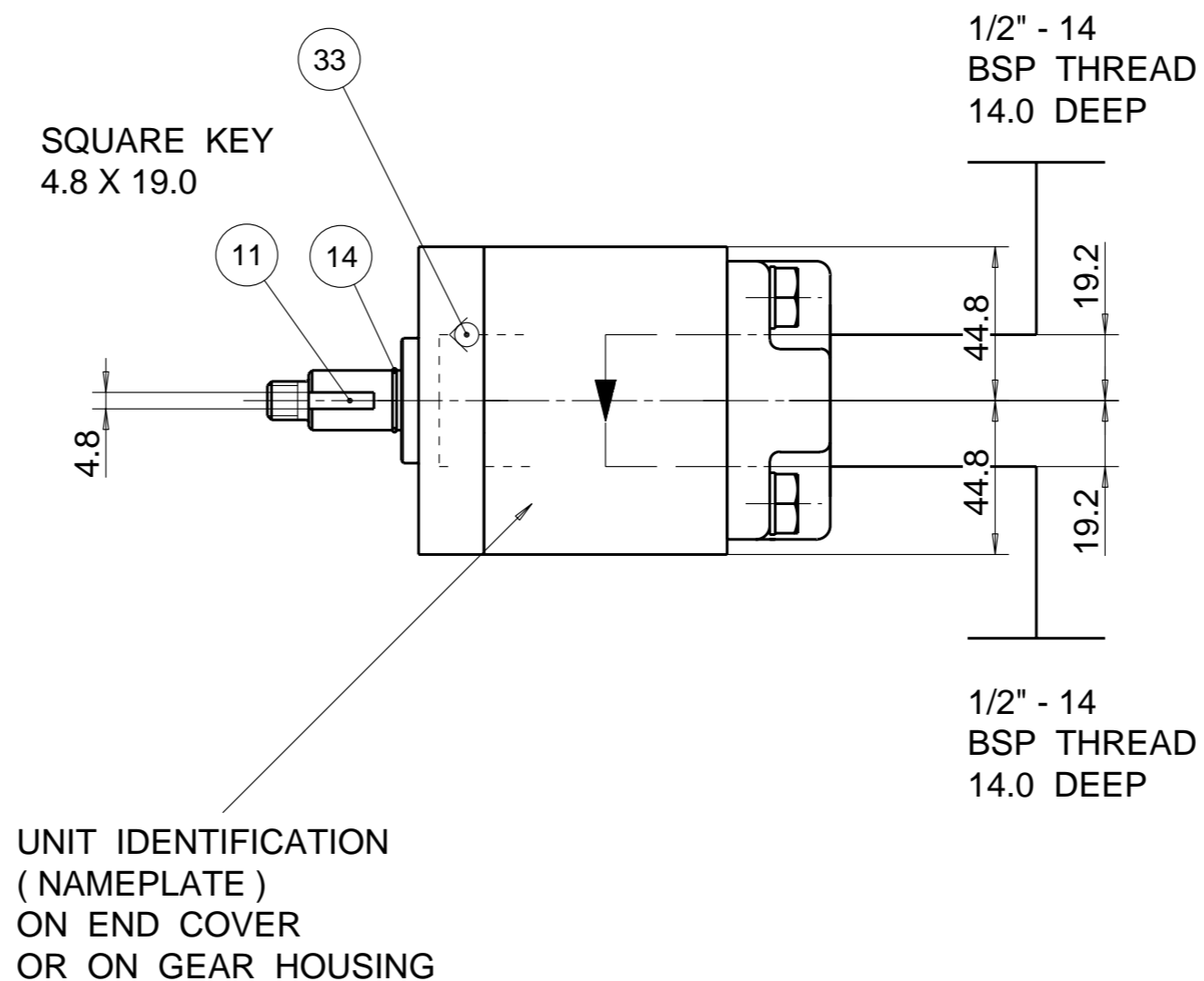
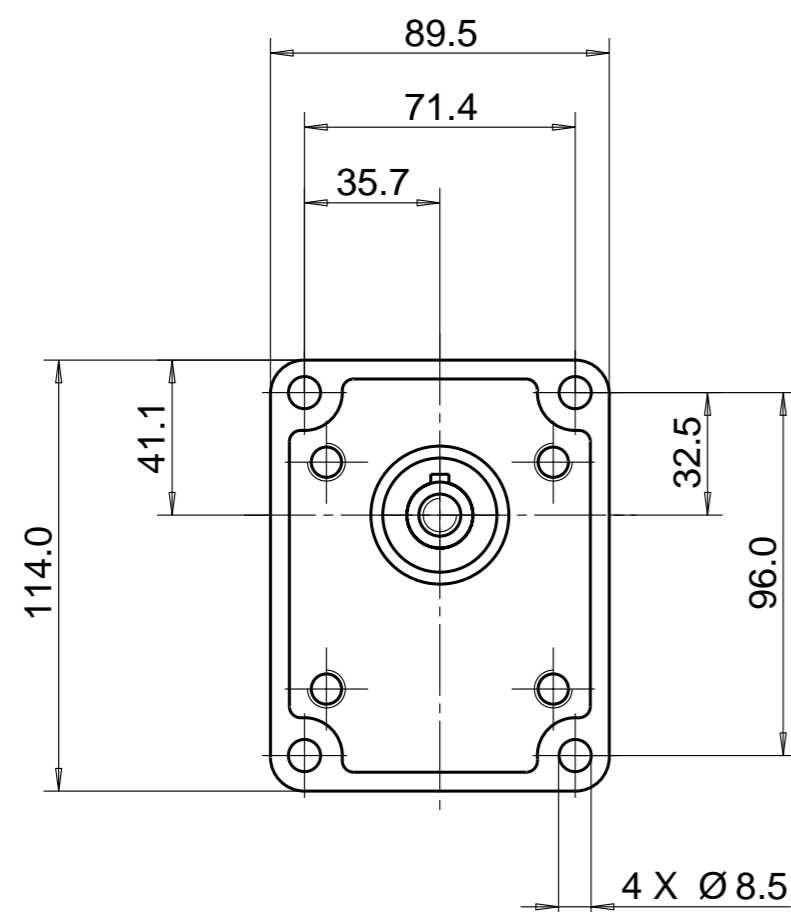
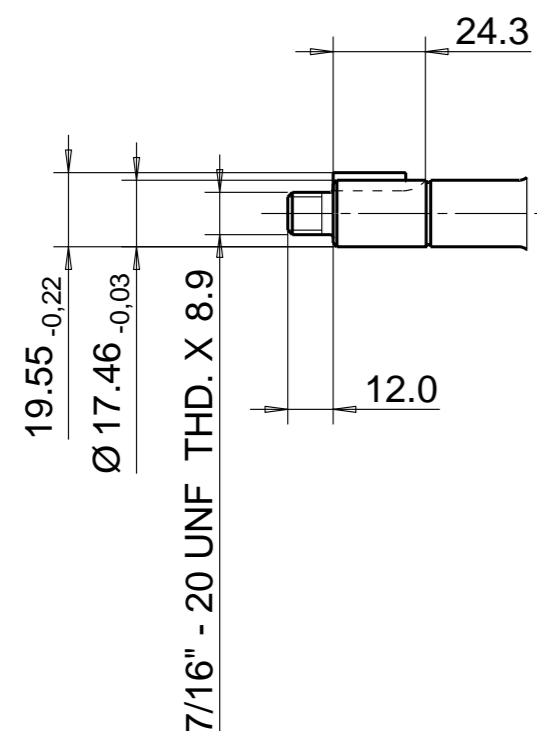
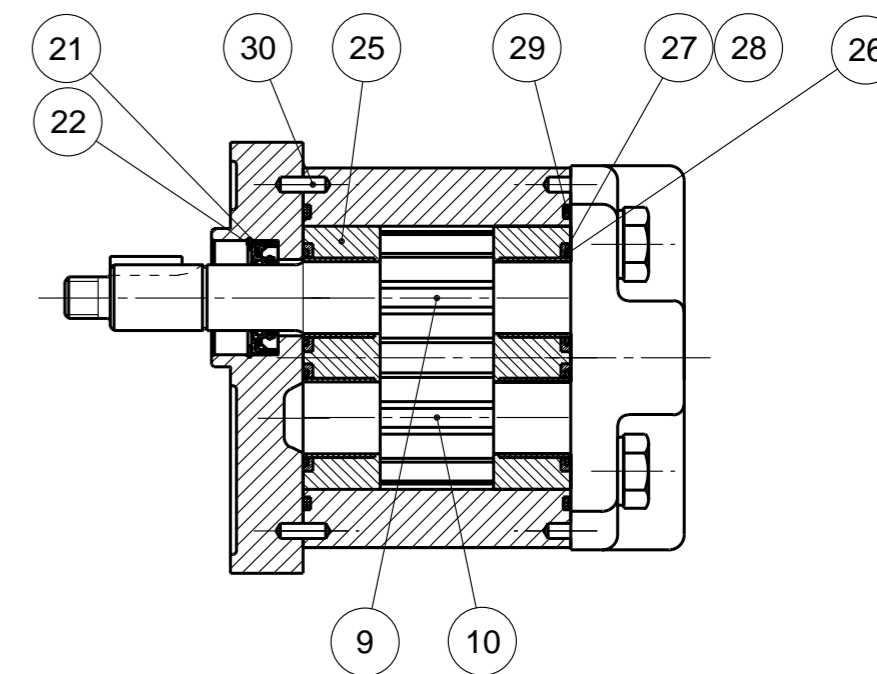
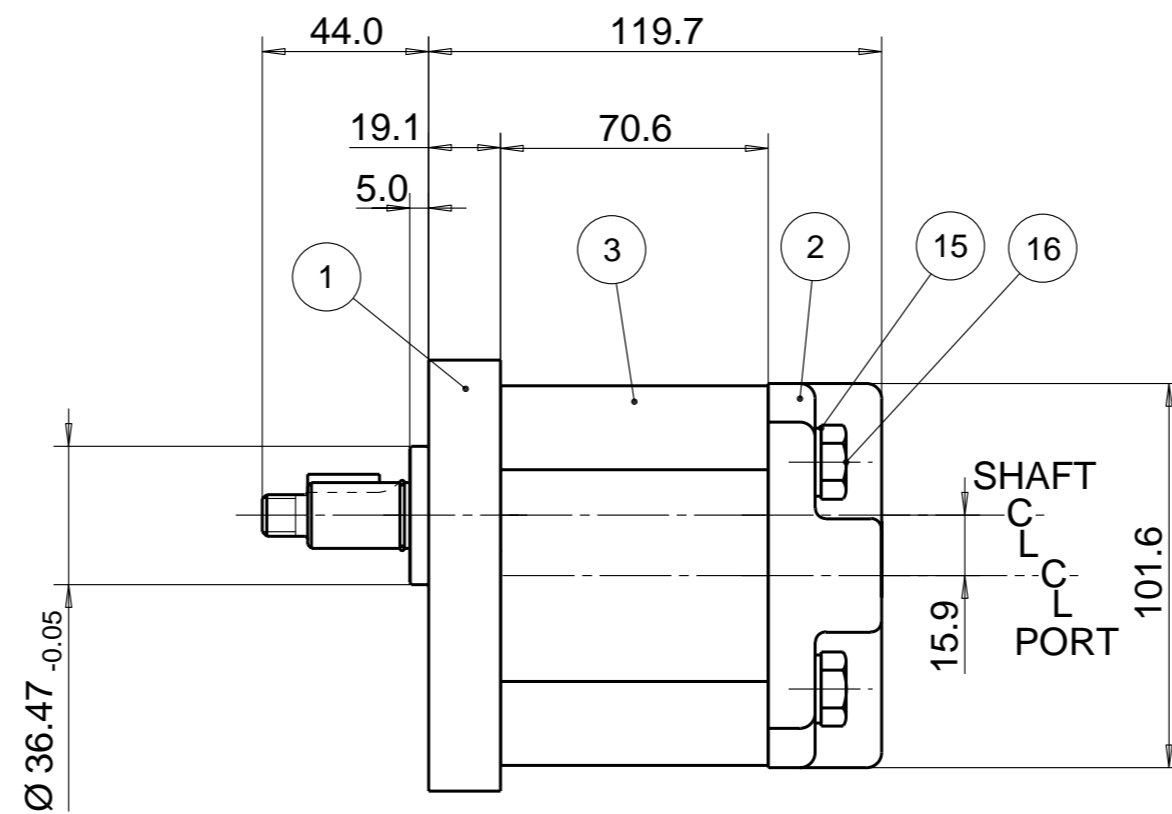


MOTOR DATA	
DISPLACEMENT	19,0 ccm
MAX. PRESSURE	210 bar
SPEED RATE	500 TO 2200 min ⁻¹
MAX SHAFT SEAL PRESSURE	5 bar
ROTATION	CLOCKWISE



UNIT IDENTIFICATION
(NAMEPLATE)
ON END COVER
OR ON GEAR HOUSING



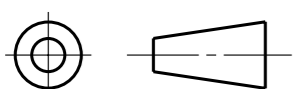
NOTE

1 FOR ASSEMBLY INSTRUCTIONS SEE DWG. NO. "511-B2"
"PGM511 MOTOR ASSEMBLY INSTRUCTIONS".

28	8301-016-0B9	4	SEAL. CHAN.	36			
27	8301-016-0AB	4	SEAL. CHAN.	35			
26	8301-015-006	2	SEAL. BK-UP	34			
25	391 2185 133	2	THRBLK/BSHG	33	8301-061-00S	1	CHECK VALVE
24				32			
23				31			
22	9211-323-00B	1	RING, SNAP	30	391 2080 078	2	PIN. DOWEL
21	8339-019-00S	1	SEAL. LIP	29	9313-145-00B	2	SEAL. SECT.

ITEM	PART NO	REQD	DESCRIPTION
20			
19			
18			
17			
16	391 1401 545	4	SCREW (100 MM)
15	391 3782 231	4	WASHER
14	9213-118-00P	1	RING, SNAP
13			
12			
11	9602-107-00B	1	KEY
10	334 2719 000	1	DRIVEN GEAR
9	334 1619 204	1	DRIVE GEAR
8			
7			
6			
5			
4			
3	334 8519 100	1	HOUSING. GEAR
2	332 3031 404	1	HOUSING. PEC
1	334 5041 209	1	HOUSING. SEC

THIRD ANGLE PROJECTION



EXP NO.

FIRST USED

07 - 10 - 930

334 9211 175

SYM.

REVISIONS

UNIT COMPLETELY TO BE PAINTED
EXCEPT :

MOUNTING FACE
PORTS
SEAL FACES
NAMEPLATE

COLOUR : BLACK (RAL 9005) SEE ZSS - A1

THIS DOCUMENT CONTAINS INFORMATION THAT IS CONFIDENTIAL AND PROPRIETARY TO PARKER-HANNIFIN CORPORATION ("PARKER"). THIS DOCUMENT IS FURNISHED ON THE UNDERSTANDING THAT THE DOCUMENT AND THE INFORMATION IT CONTAINS WILL NOT BE COPIED OR DISCLOSED TO OTHERS OR USED FOR ANY PURPOSE OTHER THAN CONDUCTING BUSINESS WITH PARKER, AND WILL BE RETURNED AND ALL FURTHER USE DISCONTINUED UPON REQUEST BY PARKER. ALL RIGHTS RESERVED.

PGM511C0190CL1D3NB1B1E3E3B1

MATERIAL

H.E.-STD:

ADM CTR M
REV DTE 000000

WT 4 kg

DIMENSIONS ARE MM

Parker Pump & Motor Division
Chemnitz

DR. BY DATE CH. BY DATE SCALE
WS 19OCT07 JS 19OCT07 1/2

334 9211 175

© 2007 Parker Hannifin Corporation