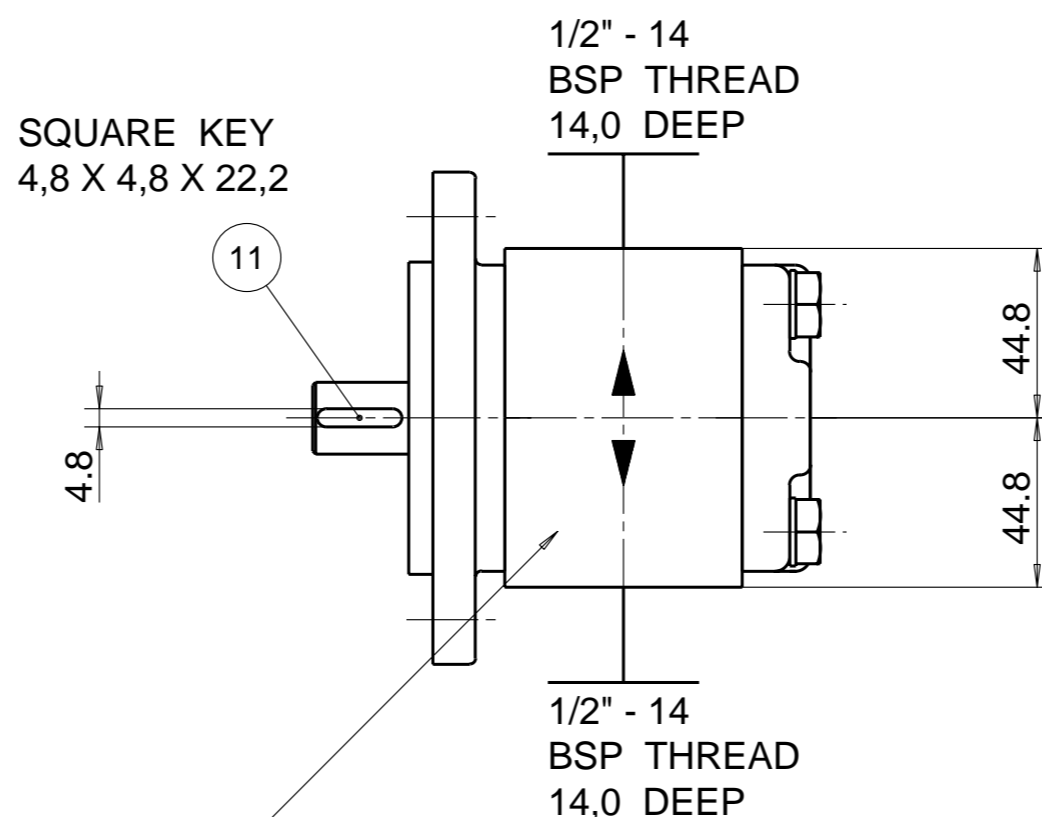
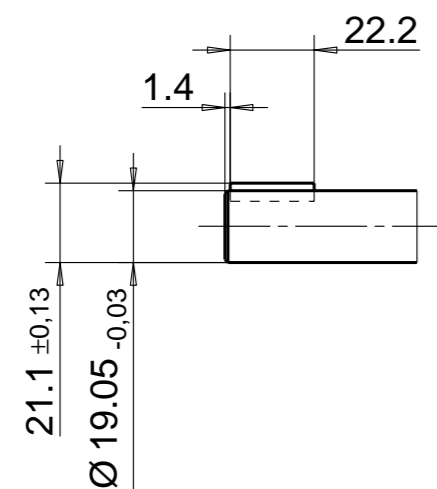
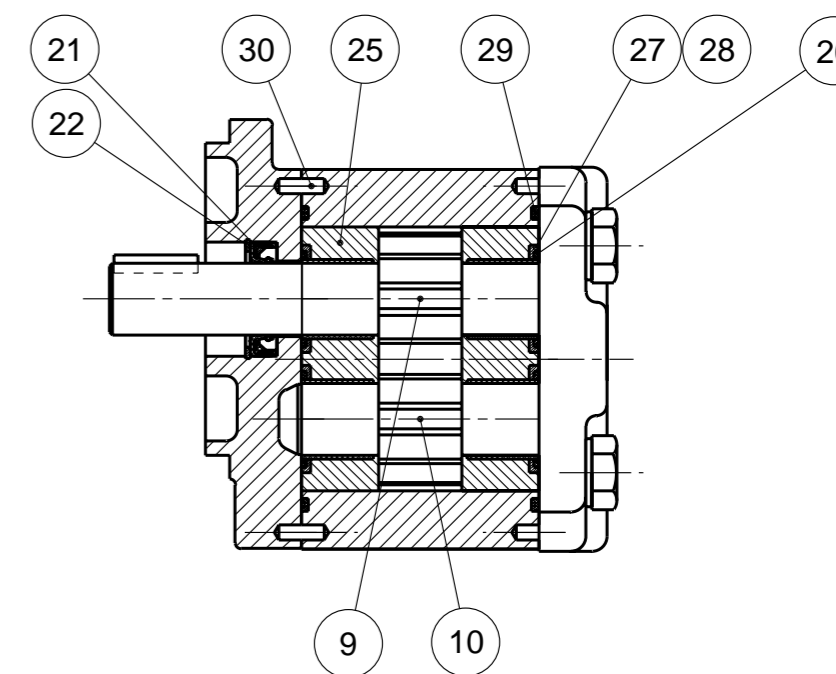


MOTOR DATA	
DISPLACEMENT	14,0 ccm
MAX. PRESSURE	250 bar
SPEED RATE	500 TO 2900 min ⁻¹
MAX SHAFT SEAL PRESSURE	5 bar
ROTATION	BI - DIRECTIONAL



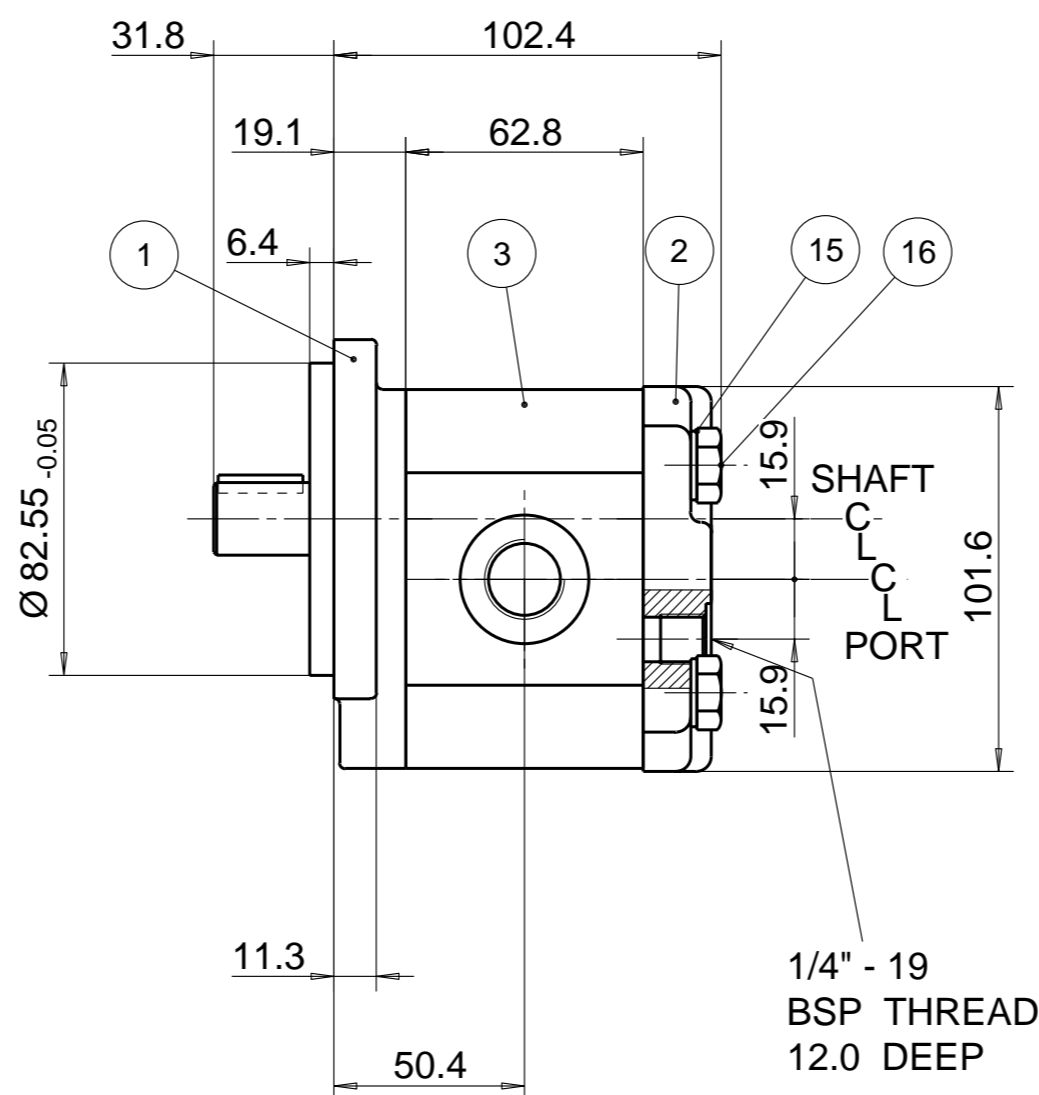
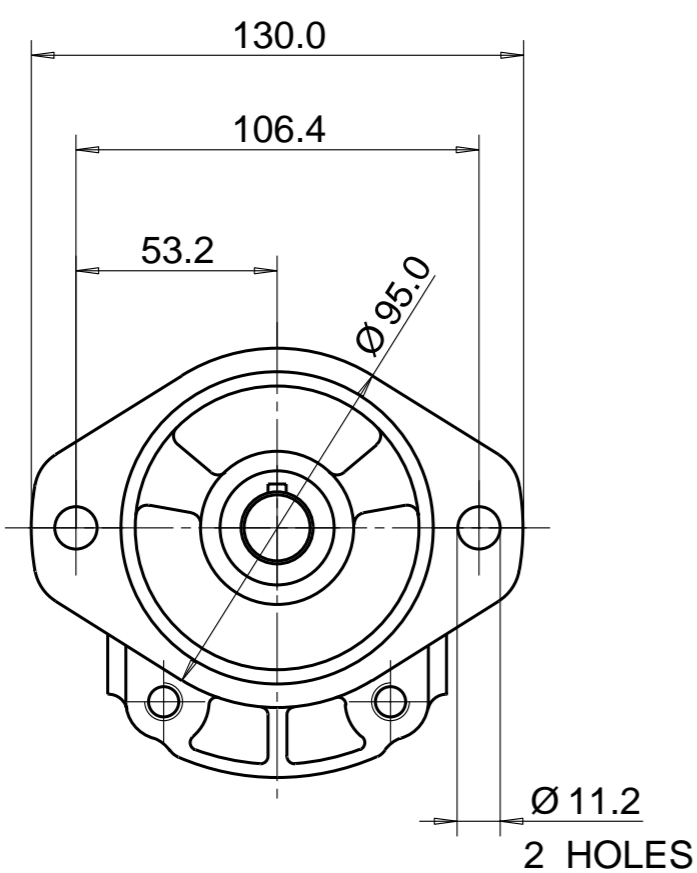
SQUARE KEY
4,8 X 4,8 X 22,2

UNIT IDENTIFICATION
(NAMEPLATE)
ON END COVER
OR ON GEAR HOUSING



NOTE

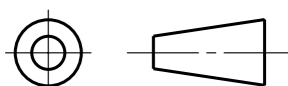
1 FOR ASSEMBLY INSTRUCTIONS SEE DWG. NO. "511-B2"
"PGM511 MOTOR ASSEMBLY INSTRUCTIONS".



ITEM	PART NO	REQD	DESCRIPTION	ITEM	PART NO	REQD	DESCRIPTION
28	8301-016-0B9	4	SEAL. CHAN.	36			
27	8301-016-0AB	4	SEAL. CHAN.	35			
26	8301-015-006	2	SEAL. BK-UP	34			
25	391 2185 133	2	THRBLK/BSHG	33			
24				32			
23				31			
22	9211-325-003	1	RING, SNAP	30	391 2080 078	2	PIN. DOWEL
21	9411-601-00N	1	SEAL. LIP	29	9313-145-00B	2	SEAL. SECT.

ITEM	PART NO	REQ'D	DESCRIPTION
20			
19			
18			
17			
16	391 1401 543	4	SCREW (90 MM)
15	391 3782 231	4	WASHER
14			
13			
12			
11	391 1781 113	1	KEY
10	334 2714 000	1	DRIVEN GEAR
9	334 1614 300	1	DRIVE GEAR
8			
7			
6			
5			
4			
3	334 8114 404	1	HOUSING. GEAR
2	334 3000 097	1	HOUSING. PEC
1	334 5021 201	1	HOUSING. SEC

THIRD ANGLE PROJECTION



EXP NO.

FIRST USED

10 - 10 - 99901

334 9219 477

SYM.

REVISIONS

THIS DOCUMENT CONTAINS INFORMATION THAT IS CONFIDENTIAL AND PROPRIETARY TO PARKER-HANNIFIN CORPORATION ("PARKER"). THIS DOCUMENT IS FURNISHED ON THE UNDERSTANDING THAT THE DOCUMENT AND THE INFORMATION IT CONTAINS WILL NOT BE COPIED OR DISCLOSED TO OTHERS OR USED FOR ANY PURPOSE OTHER THAN CONDUCTING BUSINESS WITH PARKER, AND WILL BE RETURNED AND ALL FURTHER USE DISCONTINUED UPON REQUEST BY PARKER. ALL RIGHTS RESERVED.

PGM511A0140BL6H2NE3E3B1B1G4

MATERIAL

H.E.-STD:

ADM CTR

M

REV DTE

000000

WT

2.98 kg

DIMENSIONS ARE MM

Parker Pump & Motor Division
Chemnitz

DR. BY	DATE	CH. BY	DATE	SCALE
RP	29OCT10	JS	29OCT10	1/2

334 9219 477

© 2010 Parker Hannifin Corporation