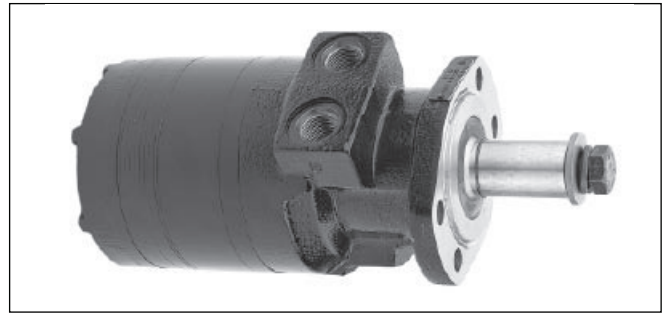
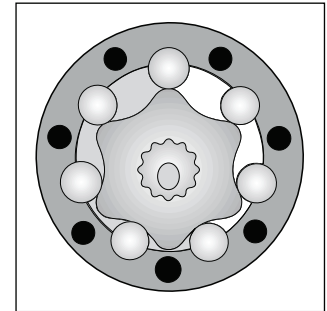
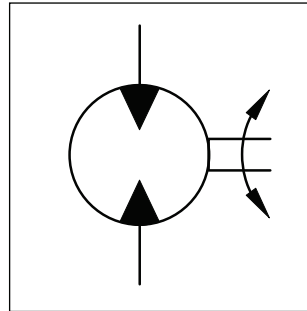


**Performance**

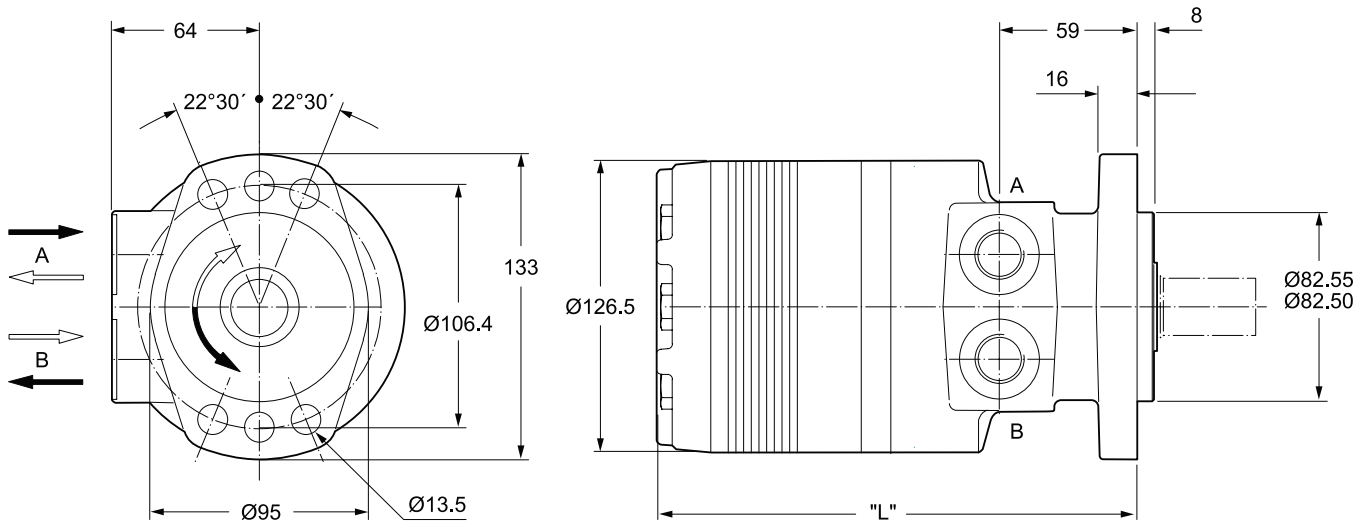
Drehzahl Speed Vitesse de rotation Velocità di rotazione	5...750 rev/min
Schluckstrom Oil flow Débit d'huile Portata	max. 100 l/min
Eingangsdruck Supply pressure Pression entrée Pressione in entrata	max. 300 bar
Drehmoment Torque Couple Coppia	max. 900 Nm
Seitenlast Side load Charges latérales Carico radiale	max. 16.000 N



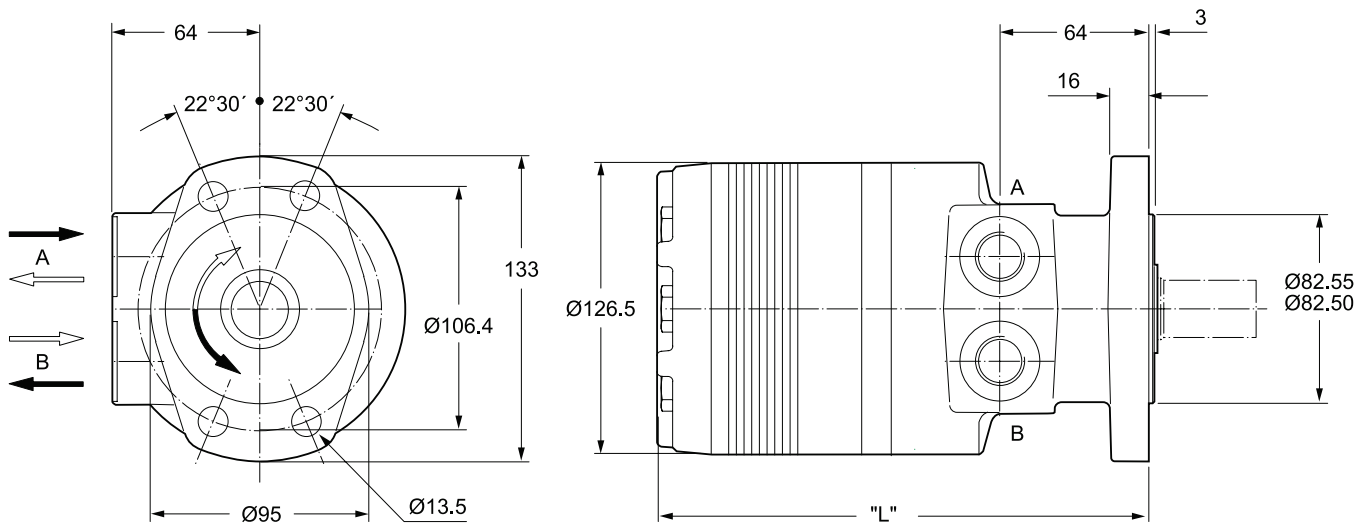
Motor series TF	cm <sup>3</sup> /U cm <sup>3</sup> /rev cm <sup>3</sup> /tr cm <sup>3</sup> /giro	cont / int U/min rev/min tr/min giri/min	cont / int l/min	cont / int bar	max bar	cont / int Nm	cont / int max. KW	cont / int Nm
TF 80	81	550/730	45/60	200/280	300	215/295	19	172/236
TF 100	100	600/750	60/75	160/240	300	210/315	21	168/252
TF 130	128	470/580	60/75	140/200	300	240/350	19	192/280
TF 140	141	370/530	60/75	140/200	300	250/390	18	197/308
TF 170	169	355/440	60/75	140/200	300	330/485	19	264/388
TF 195	197	300/380	60/75	140/200	300	380/560	19	304/448
TF 240	238	320/420	75/100	140/200	300	460/685	24	368/548
<b>TF 280</b>	<b>280</b>	<b>270/350</b>	<b>75/100</b>	<b>140/200</b>	<b>300</b>	<b>550/800</b>	<b>24</b>	<b>440/640</b>
TF 360	364	200/260	75/100	130/200	300	590/910	24	510/780
TF 405	405	170/230	75/100	130/175	300	650/910	21	575/789
TF 475	477	150/200	75/100	115/140	300	680/850	17	603/740

int. =  
Intermittierende Werte maximal: 10% von jeder Betriebsminute.  
Intermittent operation rating applies to 10% of every minute.  
Fonctionnement interm.: 10% max. de chaque minute d'utilisation.  
Servizio intermittente: 10% max di ogni minuto di utilizzazione.

**Code E**

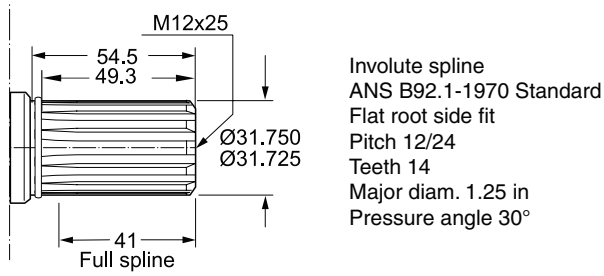


**Code M**

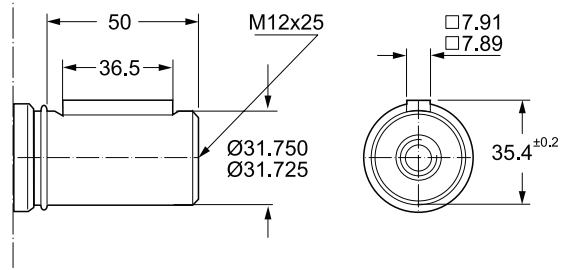


Gewicht / Weight		TF80	TF100	TF130	TF140	TF170	TF195	TF240	TF280	TF360	TF405	TF475
Poids / Peso	kg	13.6	13.7	13.9	14.0	14.2	14.7	15.0	15.5	16.0	16.5	17.5
Code E	"L" mm	186	186	189	191	194	197	202	206	215	220	229
Code M	"L" mm	191	191	194	196	199	202	207	212	220	225	234

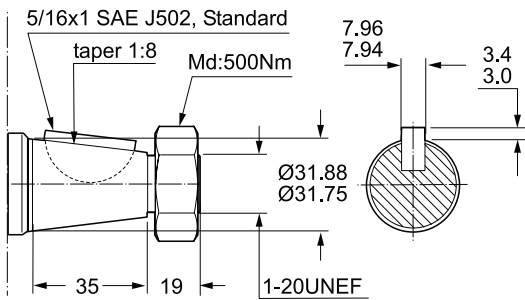
**Code 44**



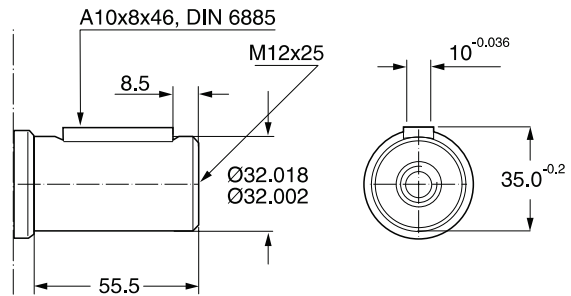
**Code 45**



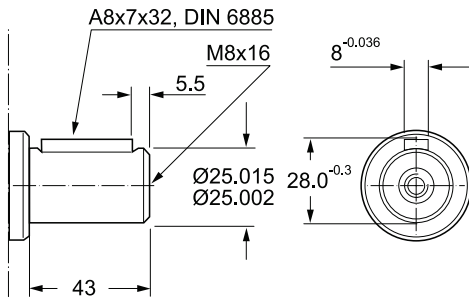
**Code 08**



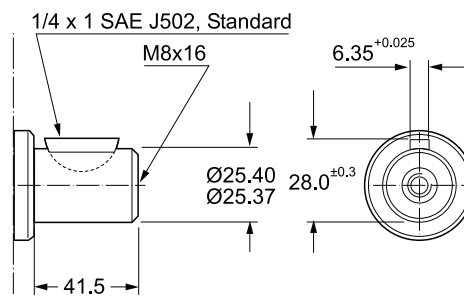
**Code 46**



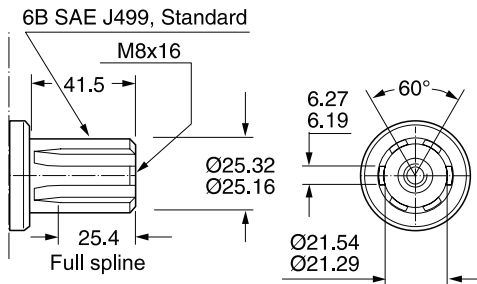
**Code 26**



**Code 47**

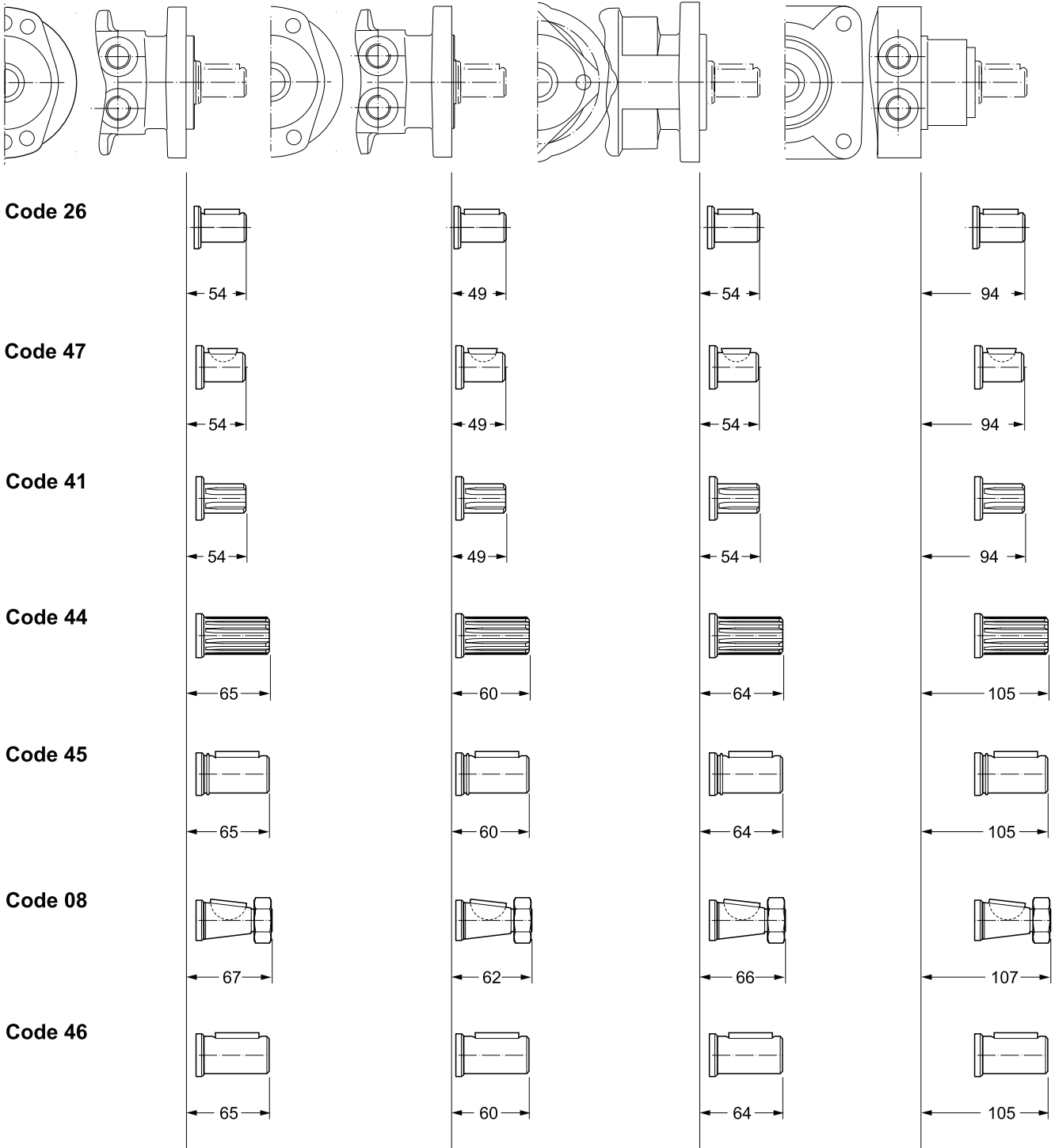


**Code 41**



**Codes 26, 41, 47**

Abtriebswelle	Ø 25mm	Max. Moment cont./int.	} 450/550 Nm
Coupling shaft	Ø 1 inch	Max. torque cont./int.	
Arbre	6B SAE	Couple maxi cont./int.	
Albero		Coppia max cont./int.	



Ordering Code

**TF**

Serie  
Series  
Série  
Serie

Schluckvolumen  
Displacement  
Cylindrée  
Cilindrata

Gehäuse  
Housing  
Carter  
Corpo motore

Anschluss  
Ports  
Plan de raccordement  
Conessioni

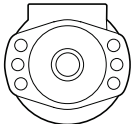
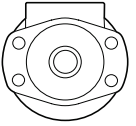
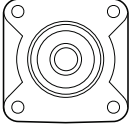
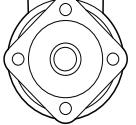
Welle  
Shaft  
Arbre  
Albero

Drehrichtung  
Direction of rotation  
Direction de rotation  
Direzione di rotazione

Option  
code

**A A A B**

Code	cm <sup>3</sup> /rev
0080	81
0100	100
0130	128
0140	141
0170	169
0195	195
0240	237
<b>0280</b>	<b>280</b>
0360	364
0405	405
0475	477

Code	Housing
<b>E</b>	
M	
H	
V <sup>1)</sup>	

Code	Front port
W	G 1/2
V	7/8-14 UNF O-Ring
N <sup>2)</sup>	Universal- M8x13
K <sup>3)</sup>	Universal- M6x12


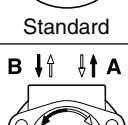
<sup>2)</sup> Nicht verfügbar für Gehäuse "H"  
Not possible for housing "H"  
Pas disponible pour carter "H"  
Non disponibile con il corpo  
codice "H"

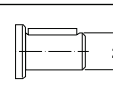
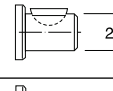


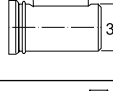

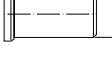
<sup>3)</sup> Nicht verfügbar für Gehäuse  
"M, E, V"  
Not possible for housing  
"M, E, V"  
Pas disponible pour carter  
"M, E, V"  
Non disponibile con il corpo  
codice "M, E, V"

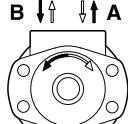
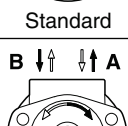
Code	Rear port
<b>Y</b>	<b>G 1/2 Axial</b>
A	7/8-14 UNF Axial
X	G 1/2 Radial
B	7/8-14 UNF Radial
L	Universal Radial M8x13

<sup>1)</sup> Nur verfügbar mit Endanschluss  
Only possible with rear port  
Possible seulement avec orifice  
arrière  
Possible solo con connessioni  
Posteriori

For further options  
different to standard  
'AAAB' see page 57.

Code	Front port
0	 Standard
1	 Standard

Code	Shaft
26 <sup>4)</sup>	 25
47 <sup>4)5)</sup>	 25.4
41 <sup>4)5)</sup>	 6B SAE
44	 Pitch 12/24
45	 31.75
08	
<b>46</b>	 32

Code	Rear port
0	 Standard
<b>1</b>	 Standard

4) Codes 26, 41, 47  
Abtriebswelle ø 25 mm Max. Moment cont./int. 450/550 Nm  
Coupling shaft ø 1 inch Max. torque cont./int. 450/550 Nm  
Arbre 6B SAE Couple maxi cont./int. 450/550 Nm  
Albero Coppia max cont./int. 450/550 Nm

5) ≤TF0280