

Cartridge Valves Legacy Product

Technical Information

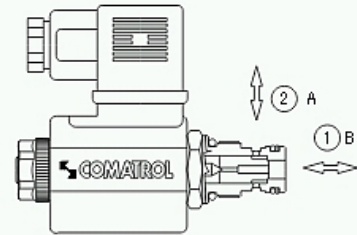
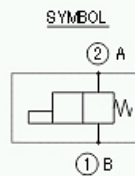
EVK 06

SIZE	06	
NOMINAL PORT SIZE	8	
MAX FLOW RATE	l/min	100
	US gpm	26
MAX PRESSURE	bar	250
	psi	3600
CAVITY NUMBER	00.95	065
NORMALIZED CAVITY	NCS	06.2
MAX TIGHTENING TORQUE	Nm	50
WEIGHT INCLUDING COIL	kg	0.430
CAVITY DIMENSIONS	ref	11.450

SOLENOID OPERATED DIRECTIONAL VALVES POPPET TYPE

TWO WAY - TWO POSITION

NCS Type EVK 06



VERSIONS

TYPE	HYDRAULIC SYMBOLS	FUNCTIONS OBTAINED WITH SOLENOID		MAX FLOW RATE l/min		MAX PRESSURE bar	
		De-energized	Energized	Without filter	With filter	Without filter	With filter

C1				100	90	250	210
C3				100	90	250	210
E C1				100	90	250	210
E C3				100	90	250	210

DIMENSIONS (mm)

