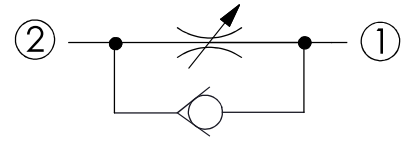


NC-13A-21-BC-L



TECHNICAL DATA

Max. operating pressure: 350 bar
(Refer To Performance Chart)

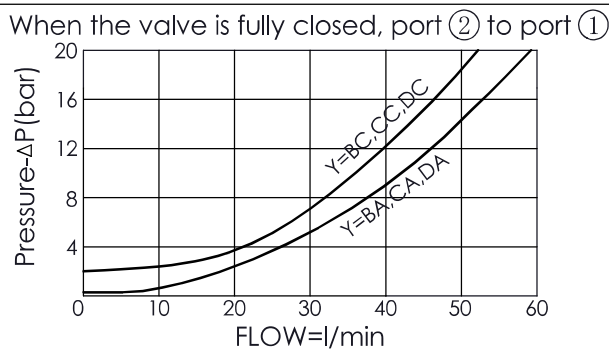
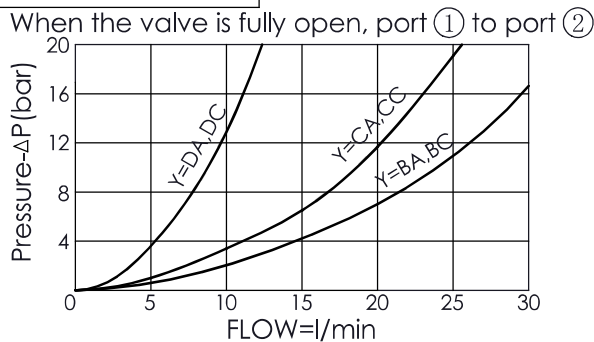
Rated flow: 25 l/min
(Refer To Performance Chart)

Cavity-Tooling: 13A-2

Installation torque: 40-50 Nm

Weight: 0.14 (Z:L) kg

Performance Chart



X OPERATION

21 2 to 1 (Free Flow)

Z OPTIONS

L Leakproof hex. socket screw. 

K Handknob with Lock Knob. 

T Three-winged Handknob Kit. 

Y	OPTIONS	
	Maximum Nominal Orifice (Refer To Performance Chart)	Cracking Pressure
BA	Ø 4.8 mm	0.3 bar
BC	Ø 4.8 mm	2.0 bar
CA	Ø 2.3 mm	0.3 bar
CC	Ø 2.3 mm	2.0 bar
DA	Ø 1.5 mm	0.3 bar
DC	Ø 1.5 mm	2.0 bar