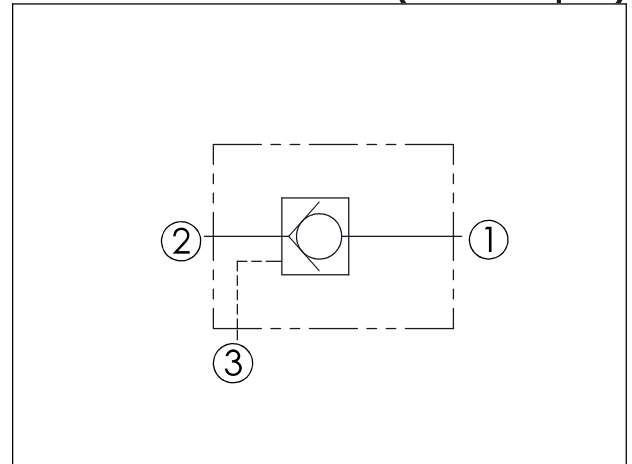
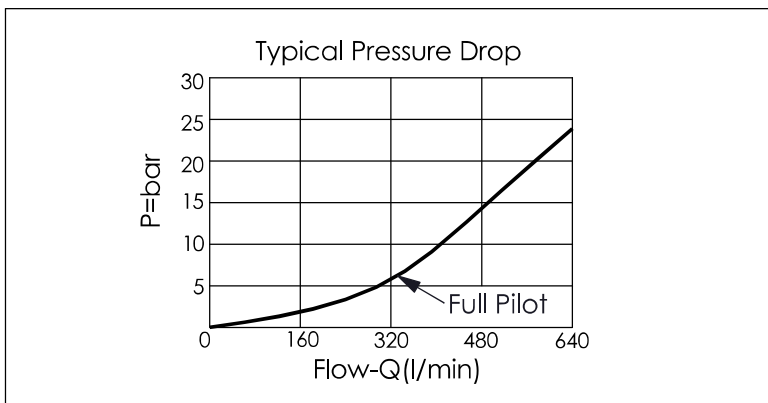


Ordering Code: **CO-19A-X-Y-Z**

UNIT:mm



TECHNICAL DATA		
Max. pressure:	350	bar
Rated flow:	480	l/min
Cavity-Tooling:	19A-3	
Installation torque:	465-500	Nm
Weight:	1.19 (Z:N)	kg



X	OPERATION	
30	2 to 1 (Free Flow) Pilot Ratio 3:1	
3C	2 to 1 (Free Flow) Sealed Pilot Piston Pilot Ratio 3:1	

Y	SPRINGS	
	Cracking pressure	
015	0.15 bar	
03	0.3 bar	
10	1.0 bar	
20	2.0 bar	
35	3.5 bar	
50	5.0 bar	
70	7.0 bar	

Z	OPTION	
N	Non-adjustable	