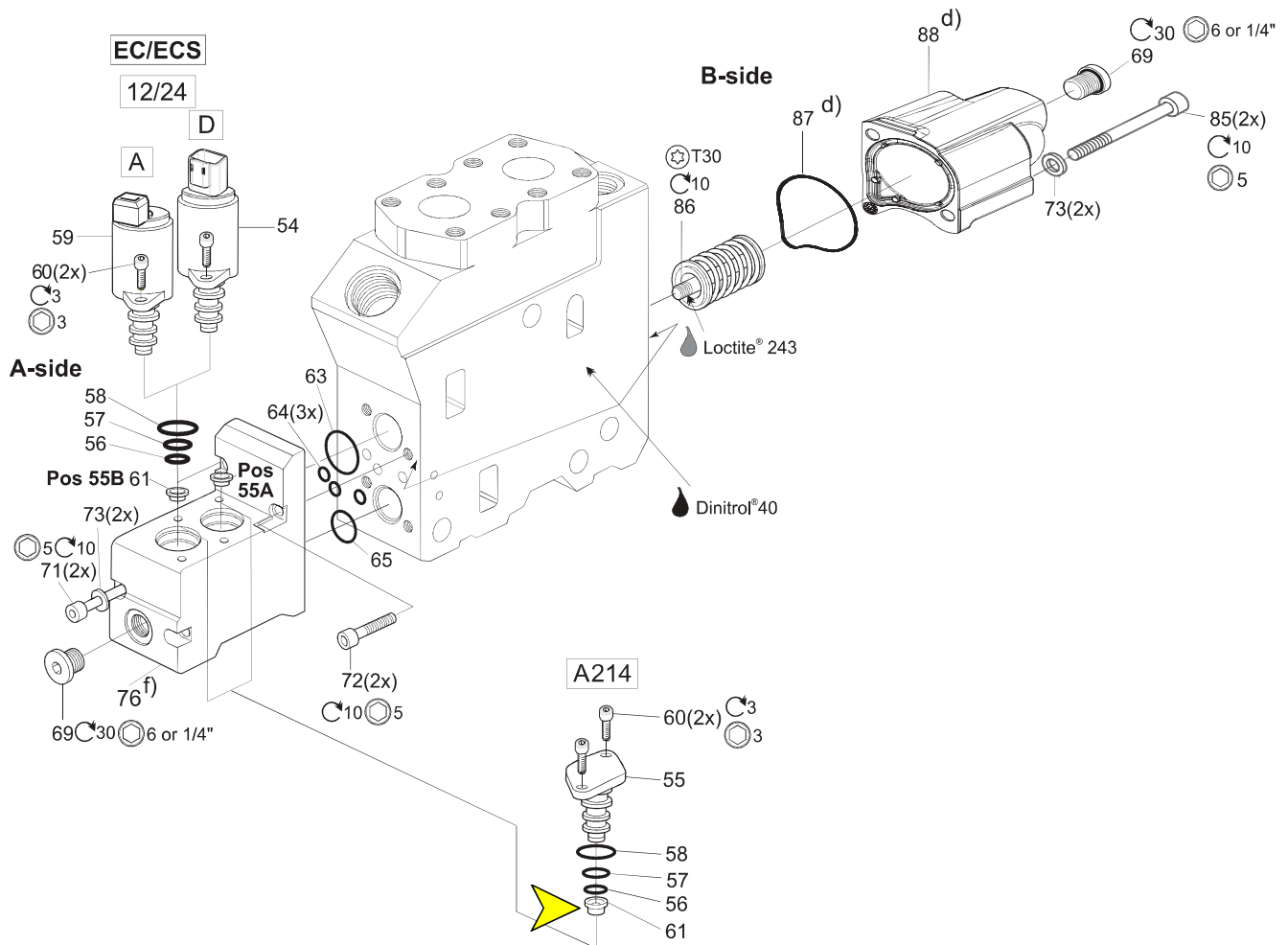



See Customer Specification				
Code	Pos	Part	Description	Remarks / Items
EC, ECS + MG	50 + 04	9120092334	Cap kit EC, A-side, BSP	63, 64(3x), 65, 69, 71(2x), 72(2x), 73(2x), 76
EC, ECS + MU, UU	50 + 04	9120092337	Cap kit EC, A-side, UNF	63, 64(3x), 65, 69, 71(2x), 72(2x), 73(2x), 76
EC, ECS + MG + KAP	50 + 04 + 66	6760553	Cap kit EC for KAP, A-side, BSP	63, 64(3x), 65, 69, 71(2x), 72(2x), 73(2x), 76
EC, ECS + MU, UU + KAP	50 + 04 + 66	6760555	Cap kit EC for KAP, A-side, UNF	63, 64(3x), 65, 69, 71(2x), 72(2x), 73(2x), 76
EC + 12 + A	50 + 05 + 56	393000M012	PVC25, 12 VDC	59 [56, 57, 58], 60(2x) Man. override, air bleed, AMP
EC + 24 + A	50 + 05 + 56	393000M024	PVC25, 24 VDC	59 [56, 57, 58], 60(2x) Man. override, air bleed, AMP
ECS + 12 + A	50 + 05 + 56	393000N012	PVC25, 12 VDC	59 [56, 57, 58], 60(2x) No man. override, no air bleed, AMP
ECS + 24 + A	50 + 05 + 56	393000N024	PVC25, 24 VDC	59 [56, 57, 58], 60(2x) No man. override, no air bleed, AMP
ECS + 12 + D	50 + 05 + 56	393000D012	PVC25, 12 VDC	54 [56, 57, 58], 60(2x) No man. override, no air bleed, Deutsch
ECS + 24 + D	50 + 05 + 56	393000D024	PVC25, 24 VDC	54 [56, 57, 58], 60(2x) No man. override, no air bleed, Deutsch
EC, ECS	50	393000K813	Seal kit PVC25	56, 57, 58
2,0	55A/55B	6760090	Pilot orifice ø2.0, 9 spots	61(5x)
1,5	55A/55B	6760089	Pilot orifice ø1.5, 8 spots	61(5x)
1,4	55A/55B	6760088	Pilot orifice ø1.4, 7 spots	61(5x)
1,3	55A/55B	6760087	Pilot orifice ø1.3, 6 spots	61(5x)
1,2	55A/55B	6760086	Pilot orifice ø1.2, 5 spots	61(5x)
1,1	55A/55B	6760085	Pilot orifice ø1.1, 4 spots	61(5x)
<b>1,0</b>	<b>55A/55B</b>	<b>6760084</b>	<b>Pilot orifice ø1.0, 3 spots</b>	<b>61(5x)</b>
0,9	55A/55B	6760083	Pilot orifice ø0.9, 10 spots	61(5x)
0,8	55A/55B	6760082	Pilot orifice ø0.8, 2 spots	61(5x)
0,7	55A/55B	6760081	Pilot orifice ø0.7, 12 spots	61(5x)
0,6	55A/55B	6760080	Pilot orifice ø0.6, 1 spot	61(5x)
EC, ECS + MG	50 + 04	6760554	**Cap kit EC, ECS, B-side, BSP	69, 73(2x), 85(2x), 87, 88
EC, ECS + MU, UU	50 + 04	6760556	**Cap kit EC, ECS, B-side, UNF	69, 73(2x), 85(2x), 87, 88
EC, ECS + MG	50 + 04	6760224	Seal kit EC, ECS, BSP	63, 64(3x), 65, 69(2x), 87
EC, ECS + MU, UU	50 + 04	6760223	Seal kit EC, ECS, UNF	63, 64(3x), 65, 69(2x), 87
EC, ECS	50	9120092015	Spring kit std, (6.5-20) bar	86
A306	59	9120091052	Spring kit A306, (6.5-26) bar	86
EC, ECS + MG, MM	50 + 04	-	Plug VST11/4EDCF	69
EC, ECS + MU, UU	50 + 04	-	Plug 6HP5ON-S	69
A214 + EC, ECS	89A/89B + 50	393000K984	Blocking plug PVC25	55 [56, 57, 58], 60(2x), 61

\*\* No possibility for spool stroke limitation (EC\* spool actuators).

**Broad Spool Section B72: EC, ECS, A, D, 12, 24, A214**



Example:  

 Pilot restriction  $\varnothing$  1.0 mm  
 Marked with three spots.

d) For new spring cap, from serial no. 1003...  
 f) For new EC cap, from serial no. 1205...

For caps old style, see Appendix B.