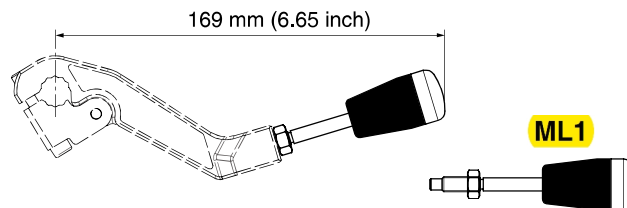


**8234939001**

Hand lever kit **ML1**. Suitable for L90LS, P70 and F130 G2 with ECH.

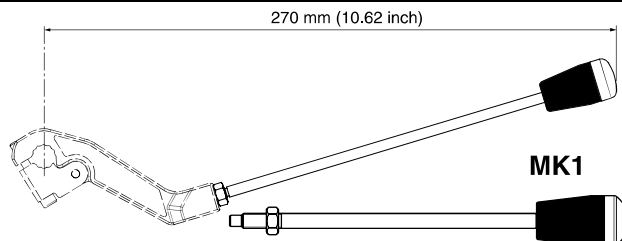


**6763758**

Hand lever kit **MK1**. Suitable for K220LS with ECH2, PCH.

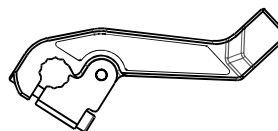
**676375825**

Hand lever kit **MK1**. Suitable for K220LS with ECH2, PCH. 25 pcs



**6761043**

Lever kit without lever pin and knob. Suitable for P70, F130 G2 with ECH, L90LS with ECH3, ECHL3, PCH2, CH2, CHB32, K220LS with ECH2 and PCH. Can be combined with ML1

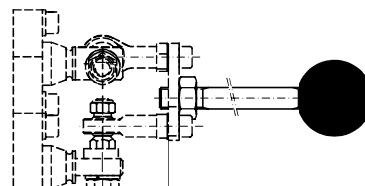


**8234939021**

Hand lever kit **MP1**. Suitable for P70 and F130 G2. Complete lever in plastic.

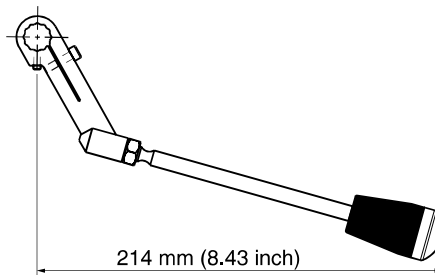
**823493902125**

Hand lever kit **MP1**. Suitable for P70 and F130 G2. Complete lever in plastic. 25 pcs.



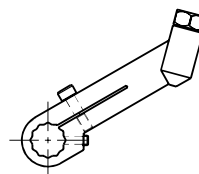
**8234939022**

Hand lever kit **MP2**. Suitable for P70 G1.



**8234939091**

Lever kit without lever pin and knob. Suitable for P70 G1. Can be combined with ML1



**8234939023**

Hand lever kit **MP3**. Suitable for P70 and F130 G2.

**823493902325**

Hand lever kit **MP3**. Suitable for P70 and F130 G2. 25 pcs.

