

DFE052/6A18ES-W201-24VDC

DFE052

solenoid control monoblock valve



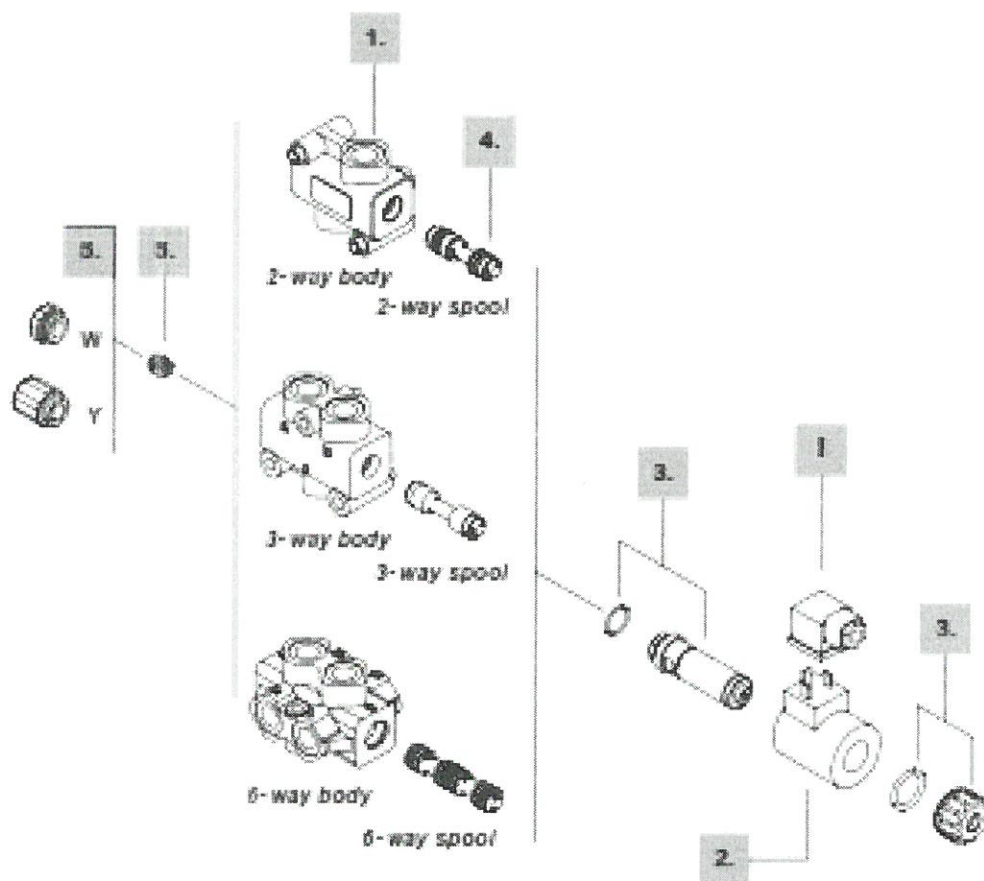
Ordering codes

Description example :

Diverter valve **DFE052/2** **A** **18** **ES** **-** **W** **201-12VDC** **-** **<GVN>**



Valve is supplied painted as standard with one coat of Primer black anti-rust paint.



2-way

1. Body *

TYPE	CODE	DESCRIPTION
DFE052/2	3CO2220321	Standard body

4. Spool options

TYPE	CODE	DESCRIPTION
A	3CAS105245	2 positions with open centre in neutral
B	3CAS105145	2 positions with closed centre in neutral

3-way

1. Body *

TYPE	CODE	DESCRIPTION
DFE052/3	3CO2221325	Standard body

4. Spool options

TYPE	CODE	DESCRIPTION
A	3CAS105345	3-way, 2 positions with ports connected in transit position
B	3CAS105445	3-way, 2 positions with ports closed in transit position
D	3CAS105546	3-way, 2 positions, without transit position, with ports closed in rest position

6-way

1. Body *

TYPE	CODE	DESCRIPTION
DFE052/6	3CO2222326	Standard body

4. Spool options

TYPE	CODE	DESCRIPTION
A	3CAS105645	6-way, 2 positions with ports connected in transit position
B	3CAS105746	6-way, 2 positions with ports closed in transit position
H	3CAS105845	6-way, 2 positions, D↔C in position 1, F↔E in position 2, ports closed in transit position

5. Positioner kits **page 67**

TYPE	CODE	DESCRIPTION
18...W	5TAP001	Spring return in position 1
18...Y	5GIU001 *	Spring return in position 1, with G1/4 drain port

3. Tube assembly **page 68**

TYPE	CODE	DESCRIPTION
ES	5SOL515000	Spring return in position 1 (without coil)

2. Coil options **page 68**

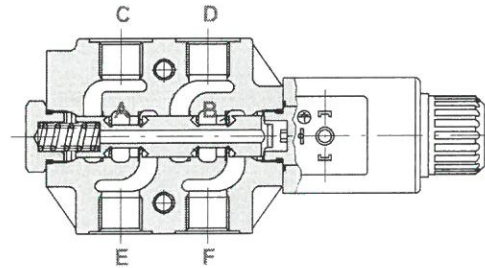
TYPE	CODE	DESCRIPTION
101	-	Without coil (only with tube kit)
<u>With ISO4400 connector</u>		
201-12VDC	4SOL515012	Coil with 12VDC nominal voltage
201-24VDC	4SOL515024	Coil with 24VDC nominal voltage
<u>With integrated DEUTSCH DT04 connector</u>		
241-12VDC	4SOL515014	Coil with 12VDC nominal voltage
241-24VDC	4SOL515025	Coil with 24VDC nominal voltage

I Optional connectors **page 119**

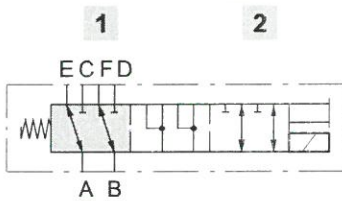
TYPE	CODE	DESCRIPTION
C02	2X1001010	According to ISO4400
C19	5CON007	Type DEUTSCH DT06

NOTE (*) - Codes are referred to BSP thread.

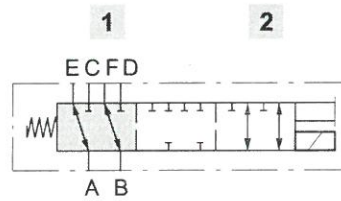
6-way



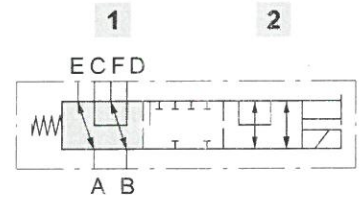
Spool type A



Spool type B

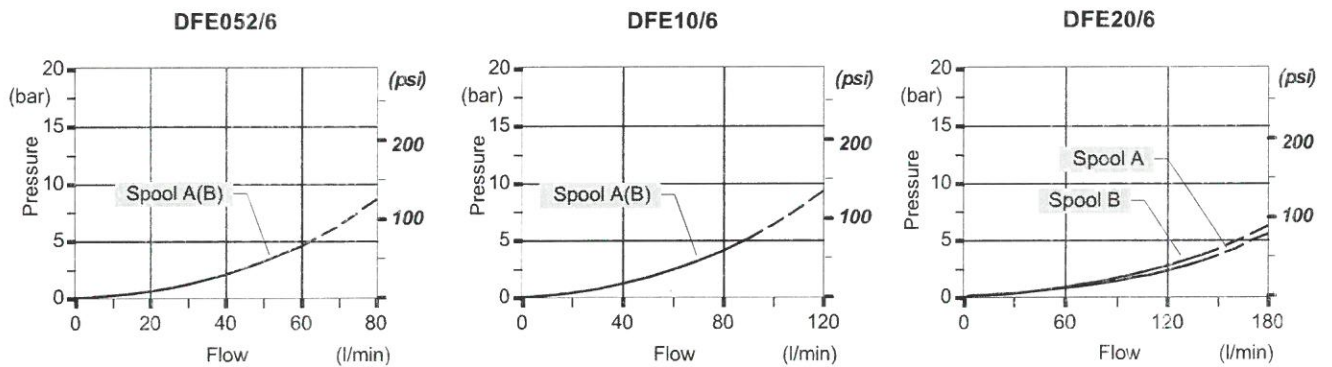


Spool type H

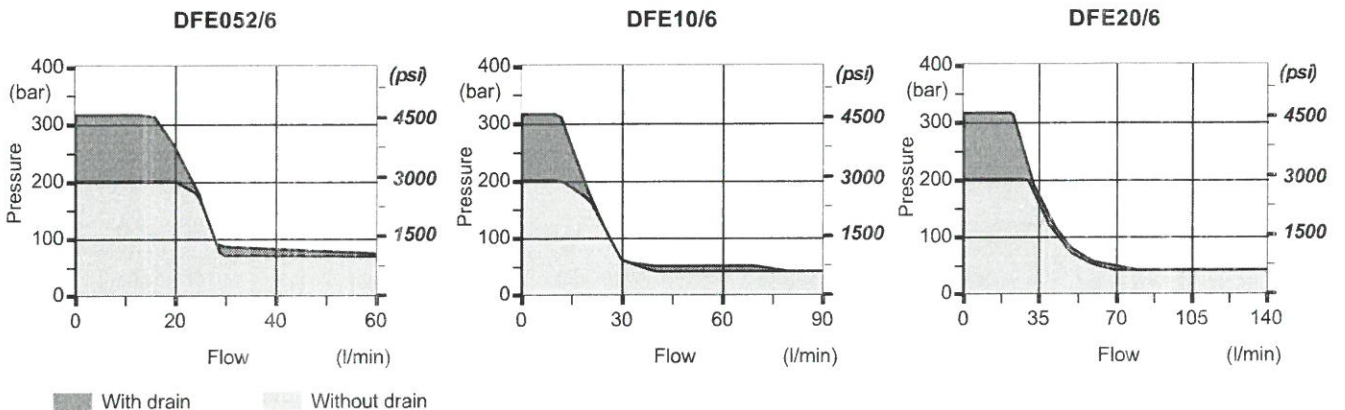


Performance data

Pressure drop versus flow: A→E(C).



Minimum dynamic conditions: (supply = $V_n - 10\%$, coil at 70 °C)



Dimensional data

6-way DFE052/6 valve

