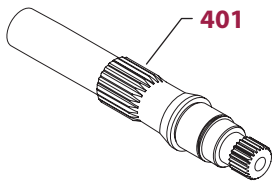
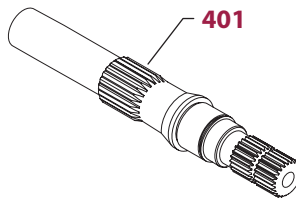


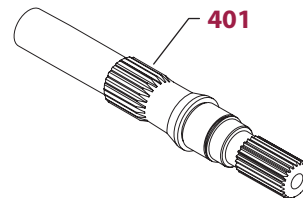
X



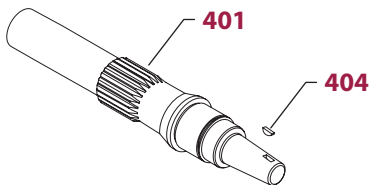
(A, B, D, G, H, J, **K**, and L)



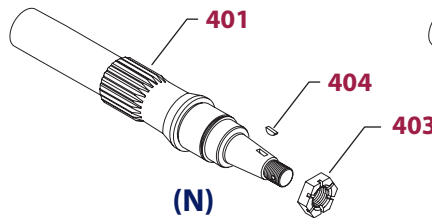
(C)



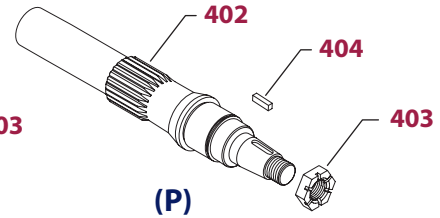
(E)



(M)



(N)



(P)

E100 200E

Enlarged **bold** type item numbers are recommended parts to be stocked for servicing

SWASHPLATE GROUP

Order Code	Item	Date Begin	Date End	Part Number	Part Name	Qty. per Model/Kit
A	200	86-23		4510072	Non-balanced swashplate kit (SB-1994-002)	1
	201	86-23		4460393	Non-balanced swashplate	
	202	86-23		4460325-0001	Journal bearing	2
	202	84-31	86-22	4460277	Journal bearing	2
B	200	86-23		4510073	Balanced swashplate kit	1
	201	86-23		4460394	Balanced swashplate	1
	202	86-23		4460696	Journal bearing (SB-1994-011)	2
C	201	04-26		4461417	Balance high response swashplate	1
	202	04-26		4461402	Journal bearing	2

SEAL GROUP

A	301	84-31		9008000-0121	Lip seal	1
B	301	84-31		9008000-0121	Lip seal	1

INPUT SHAFT

A	401	84-31		4460304	Shaft, 13 tooth, no auxiliary drive	1
B	401	84-31		4460268	Shaft, 13 tooth, 9 tooth auxiliary drive	1
C	401	01-41		4461249	Shaft, 15 tooth, 11 tooth auxiliary drive, special	1
D	401	84-31		4461288	Shaft, 13 tooth, 13 tooth auxiliary drive	1
E	401	97-38		4460966	Shaft, 15 tooth, 9 tooth auxiliary drive	1
G	401	84-31		4460099	Shaft, 15 tooth, no auxiliary drive	1
H	401	84-31		4460102	Shaft, 15 tooth, 9 tooth auxiliary drive	1
J	401	84-31		4460484	Shaft, 15 tooth, 11 tooth auxiliary drive	1
K	401	84-31		4461289	Shaft, 15 tooth, 13 tooth auxiliary drive	1
L	401	90-31		4460638	Shaft, 13 tooth, 11 tooth auxiliary drive	1
M	401	91-46	83-07	4460675	Shaft, tapered, 9 tooth auxiliary drive, special	1
	404	91-46	83-07	9003310-1510	Key	1
N	401	84-31		4460299	Shaft, tapered	1
	403	84-31		9003575-0071	Slotted nut	1
	404	84-31		9003310-1510	Key	1
P	401	85-37		4461308	Shaft, tapered, 9 tooth auxiliary drive (SB-2002-021)	1
	403	85-37		9003575-0071	Slotted nut	1
	404	02-46		5000664	Key, square	1
	404	85-37	02-45	9003310-2514	Key, woodruff (SB-2002-021)	1