

## COILS FOR SOLENOIDS

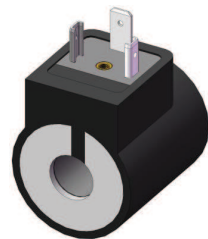
### Coil 37

**APPLICATION:**

As a spare part of EMSG-37; EMSGC-37 solenoids and similar products from other manufacturers.

**TECHNICAL DESCRIPTION:**

The spool is made from plastic (206VDC version – metal) in black colour.



**SPECIFICATION:**

Rated power	[W]	26
Voltage configurations	[VDC]	12;24;96;110;206
Coil opening diameter	[mm]	Ø 16
Overall dimensions	[mm]	Ø 36 x 50 (Ø 37 x 50 for version 206VDC)
Type of electric connector		DIN 43650A

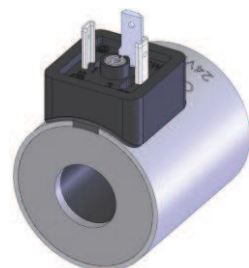
### X Coil 45X

**APPLICATION:**

As a spare part of EMSG-45X solenoids and similar products from other manufacturers.

**TECHNICAL DESCRIPTION:**

The spool is made of metal, by default powder-coated in grey colour.



**SPECIFICATION:**

Rated power	[W]	30
Voltage configurations	[VDC]	12;24;42;48;60;96;110;125;206
Coil opening diameter	[mm]	Ø 23
Overall dimensions	[mm]	Ø 45 x 50
Type of electric connector		DIN 43650A

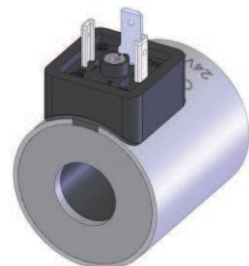
### Coil C45-XX

**APPLICATION:**

As a spare part of former versions of EMSG-45 solenoids and similar products from other manufacturers.

**TECHNICAL DESCRIPTION:**

The spool is made of metal, protected against corrosion by electrolytic zinc coating.



**SPECIFICATION:**

		coil C45-19	coil C45-21	Coil C45-22
Rated power	[W]	30	30	30
Voltage configurations	[VDC]	12;24	12;24	12;24
Coil opening diameter	[mm]	Ø 19	Ø 21	Ø 22
Overall dimensions	[mm]	Ø 45 x 50	Ø 45 x 50	Ø 45 x 50
Type of electric connector		DIN 43650A	DIN 43650A	DIN 43650A

### Coil 63X

**APPLICATION:**

As a spare part of EMSG-63X solenoids and similar products from other manufacturers.

**TECHNICAL DESCRIPTION:**

The spool is made of metal, by default powder-coated in grey colour.



**SPECIFICATION:**

Rated power	[W]	45
Voltage configurations	[VDC]	12;24;42;48;60;96;110;125;206;220
Coil opening diameter	[mm]	Ø 31,5
Overall dimensions	[mm]	Ø 63 x 74,3
Type of electric connector		DIN 43650A