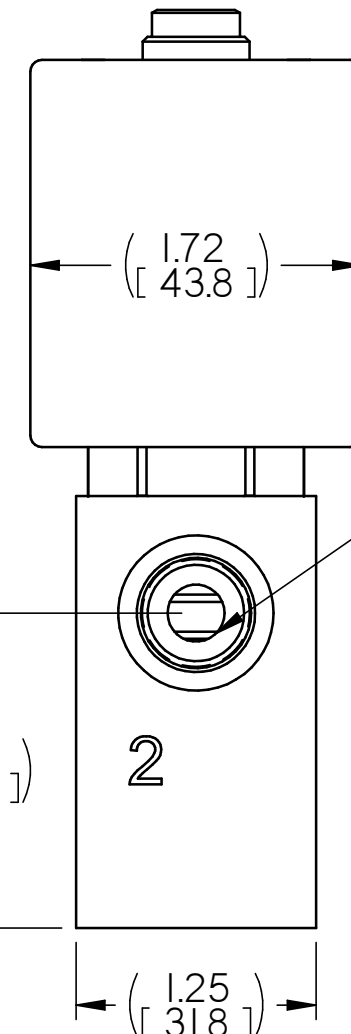
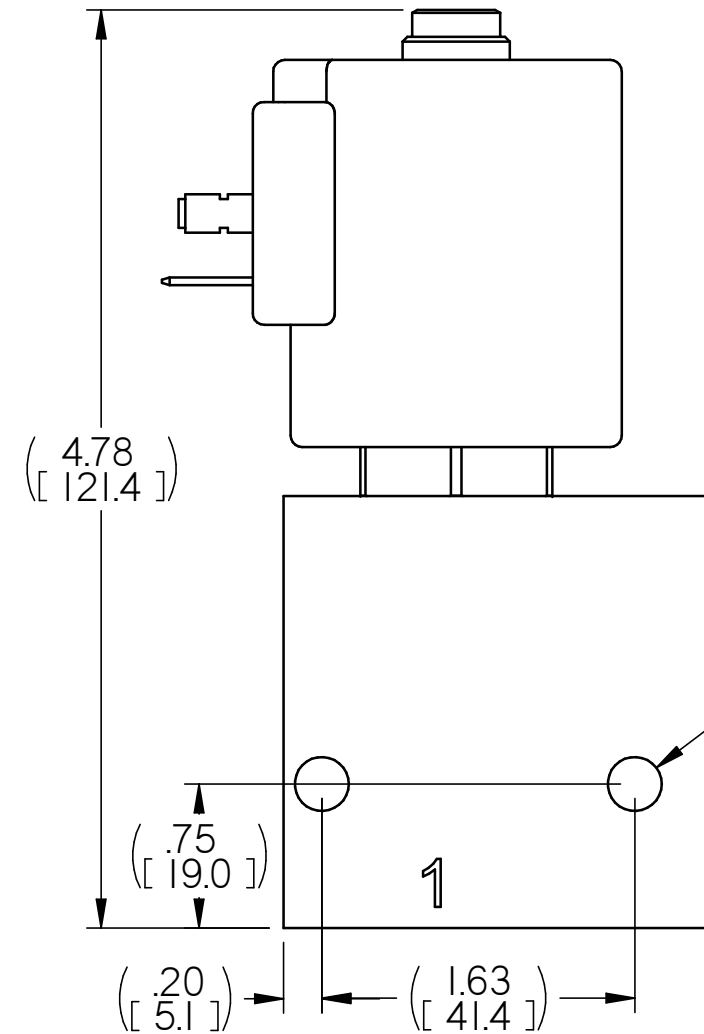
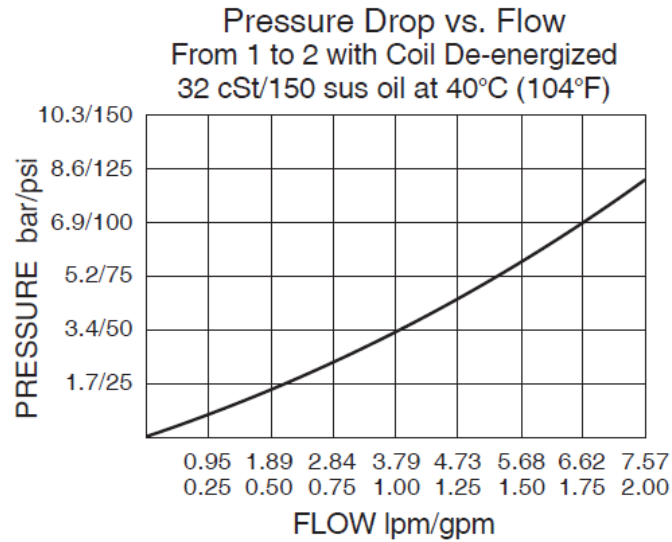
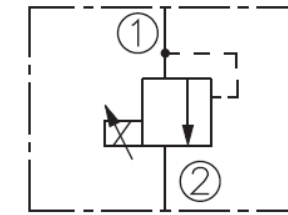


CONFIDENTIAL

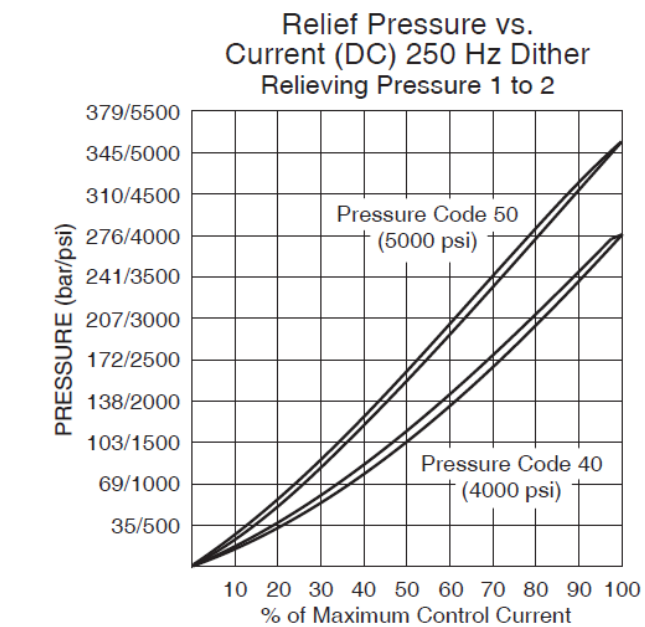
© 2014 HARSCO CORPORATION, ALL RIGHTS RESERVED. THIS DRAWING OR DOCUMENT IS THE PROPERTY OF HARSCO AND EMBODIES CONFIDENTIAL INFORMATION, TRADE SECRET INFORMATION, AND/OR KNOW-HOW THAT IS THE PROPERTY OF HARSCO. BY ACCEPTING THIS DRAWING OR DOCUMENT, THE RECIPIENT AGREES (1) NOT TO PROVIDE, OR OTHERWISE MAKE AVAILABLE, THE DRAWING OR DOCUMENT, OR ANY INFORMATION OR KNOW-HOW EMBODIED THEREIN, TO ANY THIRD PARTY AND (2) NOT TO REPRODUCE OR USE THE DRAWING OR DOCUMENT TO MANUFACTURE ANY APPARATUS OR DEVICE, WITHOUT THE PRIOR WRITTEN AUTHORIZATION OF HARSCO.

SERVICE ITEM:
 COIL 409508
 CARTRIDGE 5047389
 STEEL BODY 5047387

ISO SYMBOL



SPEC:
 24 VOLT DIN COIL
 STEEL BODY
 0-4000 PSI CARTRIDGE
 VITON SEALS
 -6 ORB PORTS
 SCREEN OVER PORT 1 NOSE

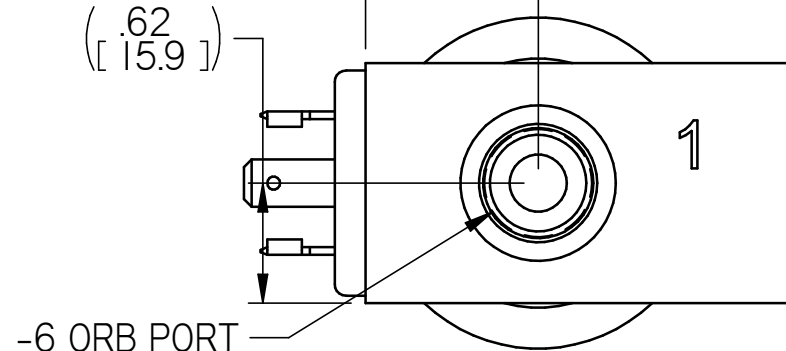


Dither Frequency: 200 Hz
PWM Frequency: 200 Hz
Response Time: While current step from 0 to maximum - 0.045 sec. While current step from maximum to 0 - 0.008 sec.
Hysteresis: 3.5% maximum at 200 Hz dither or PWM.
Leakage: 0.275 cu. in./min (4.5 ml/min.) at 80% of maximum setting
Operating Temperature: with standard Buna N seals: -40 to 100°C (-40 to 212°F)
 with fluorocarbon seals: -26 to 204°C (-15 to 400°F)
 with polyurethane seals: -54 to 107°C (-65 to 225°F)
Electrical Parameters:

Coil	Maximum Control Current (A)		Typical Resistance at 20°C (68°F)		Typical Apparent Inductance (mH)	
	12 VDC	24 VDC	12 VDC	24 VDC	12 VDC	24 VDC
D-Coil	1.30	0.66	7.2 ±3%	28.8 ±5%	141 mH	626 mH

DESCRIPTION
 A direct acting, poppet-type, proportional, pressure-relieving hydraulic cartridge valve, which can be infinitely adjusted across a prescribed range using a variable electrical input. Port 1 is protected by a 150 mesh screen. Pressure output is proportional to DC current input. This valve is intended for use as a pressure-limiting device in demanding applications.

OPERATION
 The TS58-20 blocks flow from 1 to 2 until sufficient pressure is present at 1 to offset the electrically induced solenoid force. With no current applied to the solenoid, the valve will free flow from 1 to 2.
 Note: Back pressure on port 2 becomes additive to the pressure setting at a 1:1 ratio.



MANUFACTURER	MANUFACTURERS NO
HYDRAFORCE	TS58-20S-40-6TD-V-24DG

Inch [mm]

NOMINAL SIZE RANGE		INCH PLUS OR MINUS		NOMINAL SIZE RANGE		METRIC PLUS OR MINUS	
OVER	TO	2 PLACE DECIMAL	3 PLACE DECIMAL	OVER	TO	1 PLACE DECIMAL	2 PLACE DECIMAL
0	6	.03	.005	0	150	.8	.13
6	24	.04	.008	150	600	1.0	.20
24	-	.06	.010	600	-	1.5	.25

CHANGE	R/L	REVISION	DR	DATE	Description
EC510862	A	NEW RELEASE	BPA	8/14/14	VALVE, PROP RELIEF

HARSCO RAIL		Machine Type ALL	Part Number	Size B
Material ;				
Weight 2.3 lbm		Drawn badler	Date Drawn 8/13/2014	Sheet 1 of 1
SOLID EDGE DRAWING		DO NOT SCALE		5047391