

## Coils

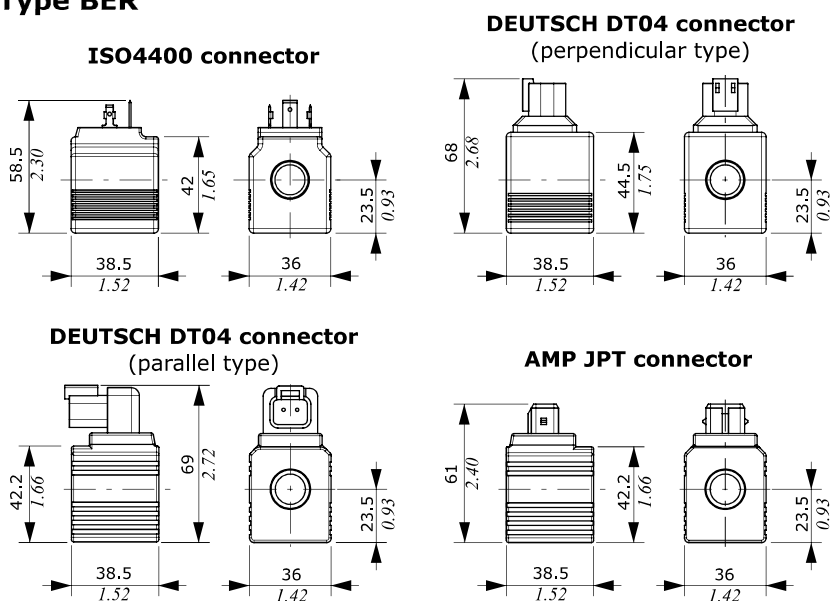
### Types and ordering codes

| Function                                     | Coil type |           | Voltage |              | Connectors   |                    |              |
|--|-----------|-----------|---------|--------------|--------------|--------------------|--------------|
|  | on SDE030 | on SDE060 |         | ISO4400      | Deutsch DT   | Deutsch DT + diode | AMP JPT      |
| Unloading valve<br>Solenoid check valve      | BER       | BER       | 12VDC   | 4SL2000121   | 4SL2000128*  | -                  | 4SL2000127   |
|  |           |           | 24VDC   | 4SL2000241   | 4SL2000245*  | -                  | 4SL2000244   |
| Pressure compensa-<br>ted flow control valve | BQP19     | BQP19     | 12VDC   | 4SL5000126   | 4SL5000125   | -                  | -            |
|  |           |           | 24VDC   | 4SL5000245   | 4SL5000244   | -                  | -            |
| Spool control kit                            | D12C      | -         | 12VDC   | 4SOL412012-C | 4SOL412013-C | -                  | 4SOL412014-C |
|  |           |           | 24VDC   | 4SOL412024-C | 4SOL412025-C | -                  | 4SOL412026-C |
|  | -         | D15       | 12VDC   | 4SOL515012   | 4SOL515011   | 4SOL515014         | 4SOL515016   |
|  |           |           | 24VDC   | 4SOL515024   | 4SOL515021   | 4SOL515025         | -            |

Notes: (\*) connector parallel to valve axis - (\*\*) connector perpendicular to valve axis

### Dimensional data and features

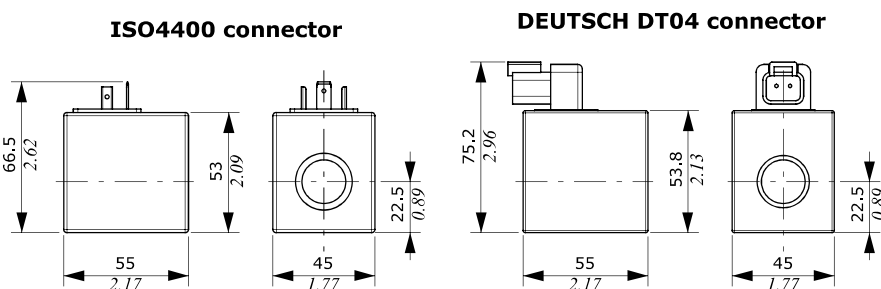
#### Type BER



#### Features

Nominal voltage tolerance : ±10%  
 Power rating . . . . . : 22.8 W - 12 VDC  
 : 22.5 W - 24 VDC  
 Max. operating current . . : 1.90 A - 12 VDC  
 : 0.94 A - 24VDC  
 Coil insulation . . . . . : Class H  
 (180°C - 356°F)  
 Weather protection . . . . : IP65 - ISO4400  
 : IP69K - Deutsch DT  
 : IP65 - AMP JPT  
 Insertion . . . . . : 100%

#### Type BQP19



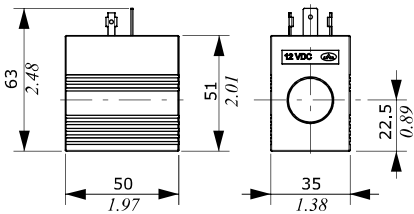
#### Features

Nominal voltage tolerance : ±10%  
 Power rating . . . . . : 15 W - 12 VDC  
 : 15 W - 24 VDC  
 Max. operating current . . : 1.25 A - 12 VDC  
 : 0.63 A - 24VDC  
 Coil insulation . . . . . : Class H  
 (180°C - 356°F)  
 Weather protection . . . . : IP65 - ISO4400  
 : IP67 - Deutsch DT  
 Insertion . . . . . : 100%

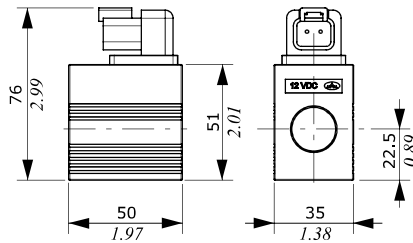
Dimensional data and features

**Type D12C**

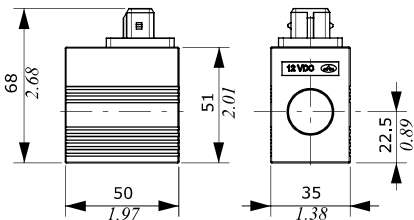
ISO4400 connector



DEUTSCH DT04 connector



AMP JPT connector

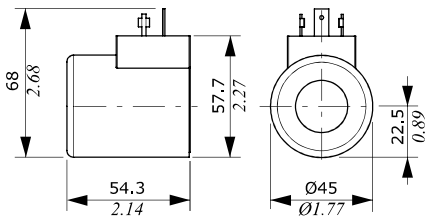


**Features**

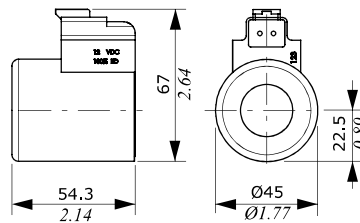
- Nominal voltage tolerance : ±10%
- Power rating . . . . . : 36 W - 12 VDC  
: 36 W - 24 VDC
- Max. operating current . . . : 3 A - 12 VDC  
: 1.5 A - 24VDC
- Coil insulation . . . . . : Class F  
(155°C - 311°F)
- Weather protection . . . . . : IP65 - ISO4400  
: IP69K - Deutsch DT  
: IP65 - AMP JPT
- Insertion . . . . . : 100%

**Type D15**

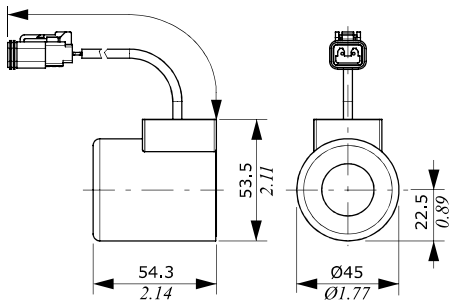
ISO4400 connector



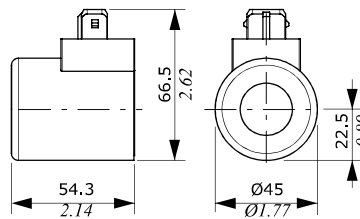
DEUTSCH DT04 connector  
(with diode)



DEUTSCH DT06 connector  
(with cable)



AMP JPT connector



**Features**

- Nominal voltage tolerance : ±10%
- Power rating . . . . . : 38 W - 12 VDC  
: 38 W - 24 VDC
- Max. operating current . . . : 3.16 A - 12 VDC  
: 1.58 A - 24VDC
- Coil insulation . . . . . : Class H  
(180°C - 356°F)
- Weather protection . . . . . : IP65 - ISO4400  
: IP69K - Deutsch DT
- Insertion . . . . . : 100%
- DIODE**
- Max. voltage . . . . . : 50 VDC
- Nominal current . . . . . : 150 mA
- Max. current . . . . . : 3 A
- Time response . . . . . : 50 ns