

P  
O  
M  
P  
E

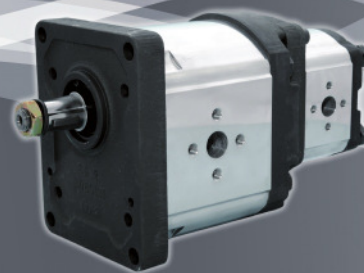
# TK&K

..... dal 1981

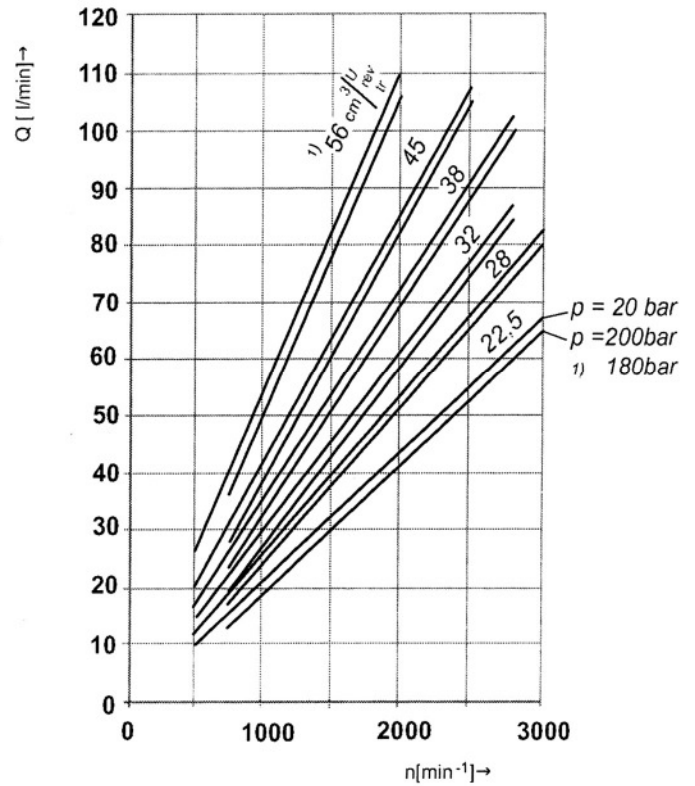
T  
K  
&  
K



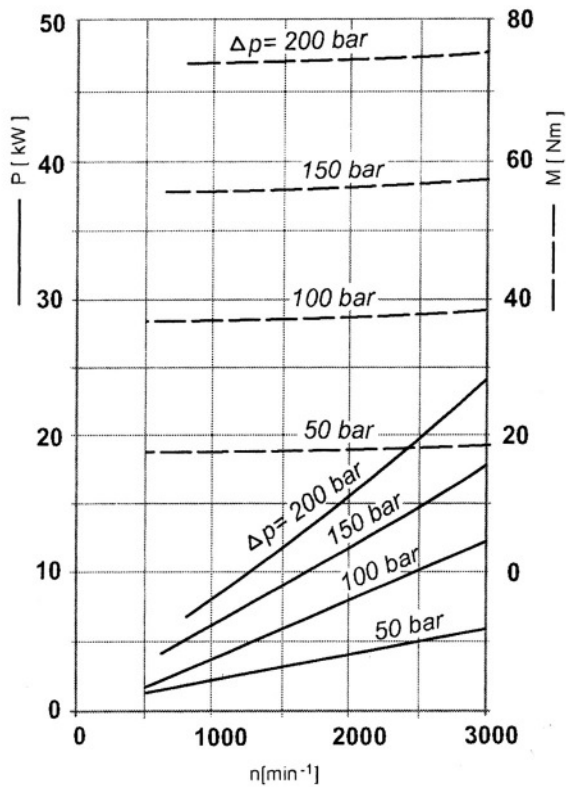
G  
E  
A  
R  
  
P  
U  
M  
P  
S



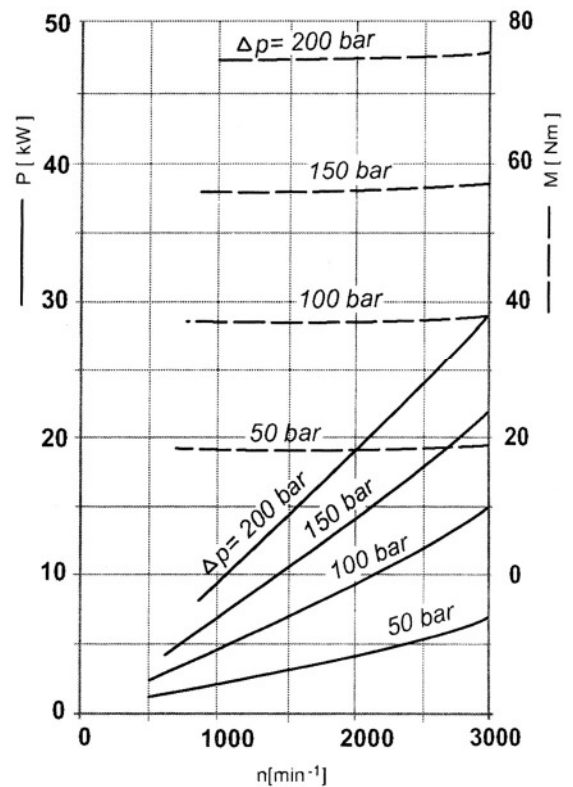
MADE IN ITALYMADE IN ITALYMADE IN ITALY



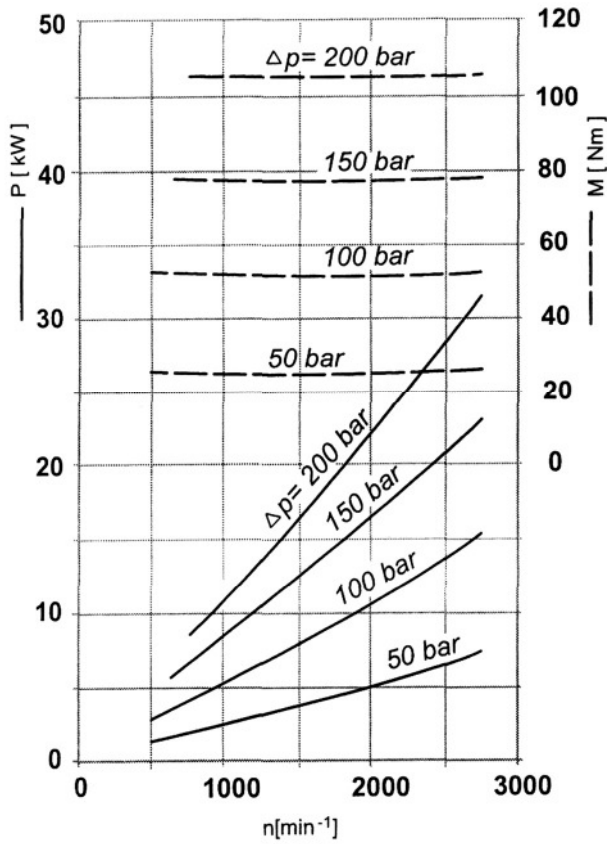
3TK 22 - cm<sup>3</sup> 22,5



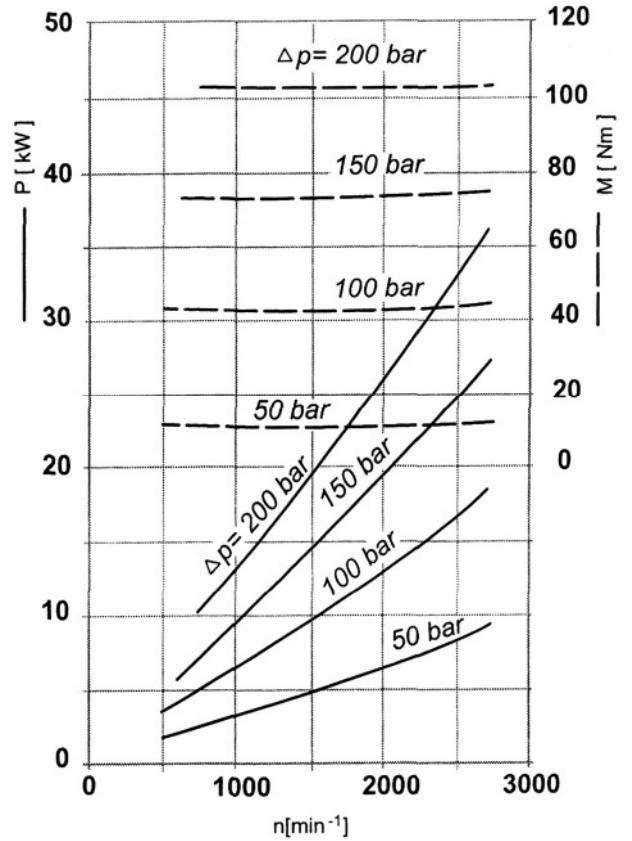
3TK 28 - cm<sup>3</sup> 28



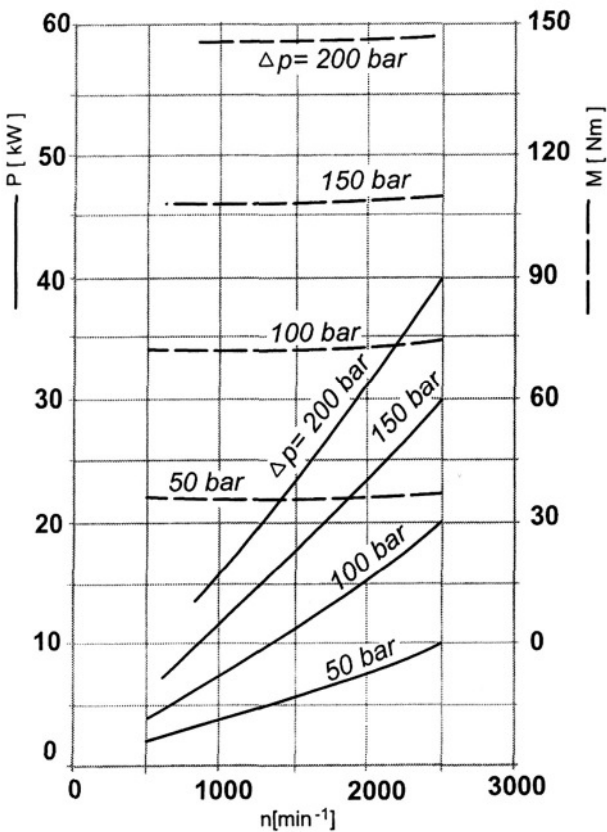
3TK 32 - cm<sup>3</sup> 32



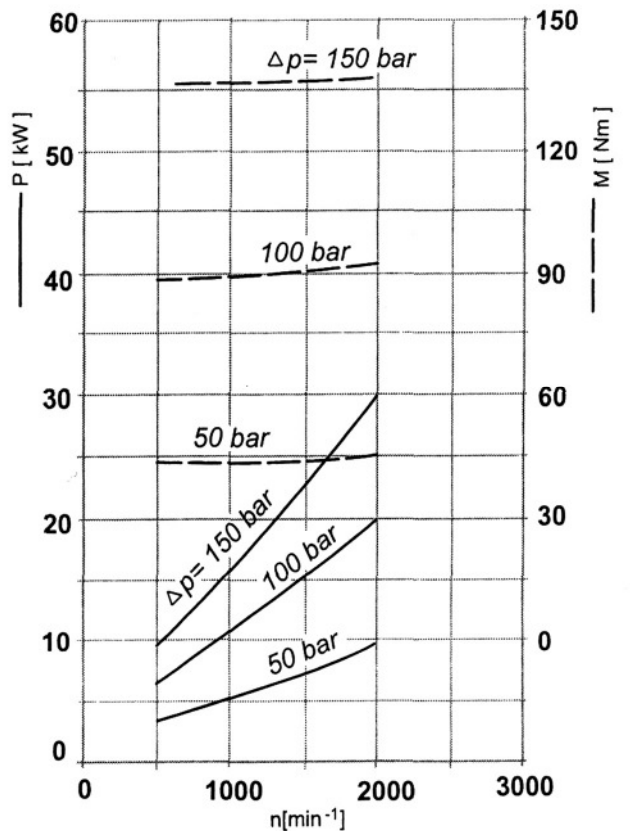
3TK 38 - cm<sup>3</sup> 38



3TK 45 - cm<sup>3</sup> 45



3TK 56 - cm<sup>3</sup> 56



## PRESTAZIONI DELLE POMPE AD INGRANAGGI:

1TK (da 1.1 a 8 cm<sup>3</sup>) - 250 bar **GRANDEZZA 1** - PRODUZIONE MARZOCCHI

F2 (da 4 a 19 cm<sup>3</sup>) - 170 bar **GRANDEZZA 2**

2TK (da 4 a 26 cm<sup>3</sup>) - 280 bar **GRANDEZZA 2** - PRODUZIONE TK&K MO

3TK (da 22 a 63 cm<sup>3</sup>) - 200 bar **GRANDEZZA 3** - PRODUZIONE TK&K MO

F3 (da 19 a 43 cm<sup>3</sup>) - 170 bar **GRANDEZZA 3**

## PRESTAZIONI DELLE POMPE 1TK - **GRANDEZZA 1** PAG. 44-47

CILINDRATA DISPLACEMENT	PORTATA a 1500 giri/min FLOW at 1500 rev/min	PRESSIONI MASSIME MAX PRESSURE			VELOCITÀ MASSIMA MAX SPEED	DIMENSIONI DIMENSIONS		
		P <sub>1</sub>	P <sub>2</sub>	P <sub>3</sub>		L	M	N
cm <sup>3</sup> /giro (cm <sup>3</sup> /rev)	litri/min (litres/min)	bar	bar	bar	giri/min (rpm)	mm	mm	mm
1,1	1,6	230	250	270	6000	33	74	62
1,3	2,0	230	250	270	6000	33,5	75	63
1,6	2,4	230	250	270	6000	34	76	64
2,1	3,2	230	250	270	6000	35	78	66
2,7	4,0	230	250	270	6000	36	80	68
3,2	4,8	210	230	250	5000	37	82	70
3,7	5,6	210	230	250	4500	38	84	72
4,2	6,4	210	230	250	4000	39	86	74
4,8	7,2	190	210	230	3500	40	88	76
5,8	8,7	190	210	230	3000	42	92	80
8,0	11,9	160	180	200	2100	46	100	88

## PRESTAZIONI DELLE POMPE 2TK - **GRANDEZZA 2** PAG. 49-89

Displacement		cm <sup>3</sup> /rev	4	5.5	8	11	14	16	19	22.5	26
Inlet pressure		bar	min, 0.7 max. 3 (absolute)								
max. continuous pressure p <sub>1</sub>			250						210	180	180
max. intermittent pressure p <sub>2</sub>			280						230	210	200
max. peak pressure p <sub>3</sub>			300						250	230	220
min. rotational speed at bar	< 100	min <sup>-1</sup>	600	500	500	500	500	500	500	500	500
	100..180		1200	1200	1000	1000	800	800	800	800	800
	180..P2		1400	1400	1400	1200	1000	1000	1000	1000	1000
max. rotational speed at	P1	min <sup>-1</sup>	3500			3000	2500	2000	2000	2000	2000
	P2		4000			3500	3000	3000	3000	2500	2500

## PRESTAZIONI DELLE POMPE 3TK - **GRANDEZZA 3** PAG. 122-127

Displacement		cm <sup>3</sup> /rev	22.2	28	32	38	45	56
Inlet pressure		bar	min, 0.7 max. 3 (absolute)					
max. continuous pressure p <sub>1</sub>			210			200	180	160
max. intermittent pressure P2			250			230	200	
max. peak pressure p <sub>3</sub>			270			250	220	
min. rotational speed at bar	< 120	min <sup>-1</sup>	500					
	120..150		600					
	150..210		800					
max. rotational speed at	P1	min <sup>-1</sup>	2500		2300		2100	1800
	P2		3000		2800		2600	2300

Ulteriori informazioni verranno fornite a richiesta

## CONSTRUCTION

External gear pumps -motors-  
complete construction -made in Italy-  
all materials -made in Italy-  
assembled and tested in Italy.

## INLET PRESSURE RANGE FOR PUMPS

10/44 psi [0,7 / 3 bar (abs.)]

## MAX DRAIN LINE PRESSURE ON THE REVERS-MOTORS- (EXTERNAL DRAIN)

73 psi (5 bar)

## MAX BACK PRESSURE ON THE REVERS-MOTORS WITH EXTERNAL DRAIN- (bidirectionals)

<p1 ( MAX CONTINUOLIS press.)  
<2175 psi (<150 bar)

## FLUID TEMPERATURE RANGE

SEALS N (NBR) (-20° C ÷ +80° C)  
SEALS V (VITON) (-25° C ÷ +110° C)

V= VITON- SEAL PUMPS SUITABLE FOR FLUID hi- temperature 110/ 115° C

## FLUID

MINERAL OIL BASED HYDRAULIC FLUID TO  
ISO/DIN

## VISCOSITÀ CINEMATICA DEL FLUIDO

ALLOWED VALUE 6 ÷ 500 cSt  
RECOMENDED VALUE 10 ÷ 100 cSt  
VALUE ALLOWED AT STARTUP <200 cSt

## INLET PRESSURE

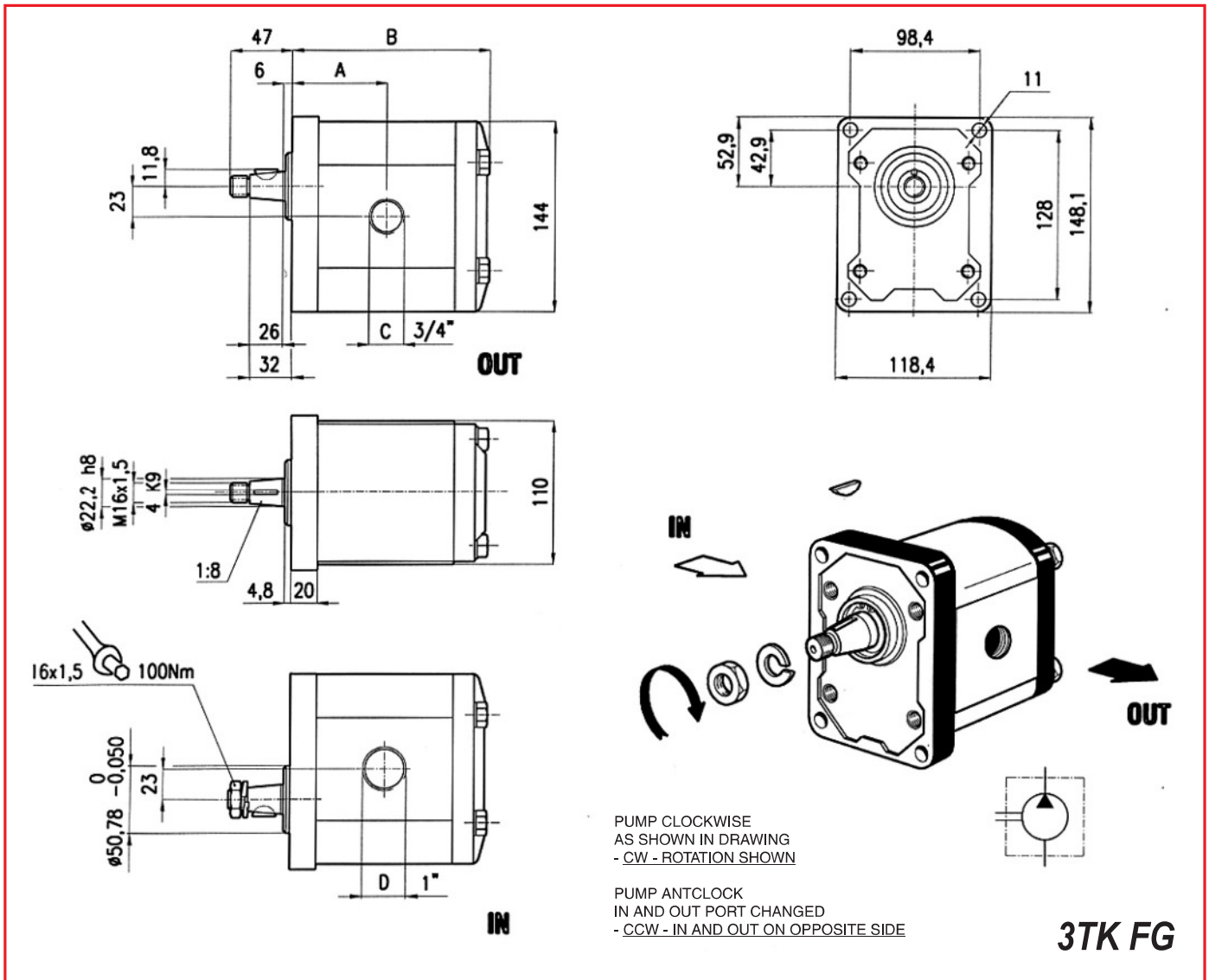
min. 0,7 bar (absolute)  
MAX. 3 bar (absolute)

## MIN- ROTATION SPEED

SIZE 1	FROM ( 1 TO 2 cc)	100 REV. min.
	FROM ( 3 TO 4 cc)	800 REV. min.
	FROM (5 TO 8 cc)	600 REV. min.
SIZE 2	FROM (4 TO 11 cc)	600 REV. min.
	FROM (14 TO 26 cc)	700 REV. min.
SIZE 3		800 REV. min.

## MAX ROTATION SPEED

SIZE 1	FROM (1 TO 3 cc)	6000 REV. min.
	FROM (3 TO 4 cc)	4500 REV. min.
	FROM (5 TO 8 cc)	3000 REV. min.
SIZE 2	FROM (4 TO 8 cc)	3500 REV. min.
	FROM (11 TO 14 cc)	3000 REV. min.
	FROM (16 TO 22 cc)	2500 REV. min.
SIZE 3	FROM (22 TO 26 cc)	2200 REV. min.
	FROM (22 TO 28 cc)	2800 REV. min.
	FROM (32 TO 38 cc)	2300 REV. min.
	FROM (45 TO 63 cc)	2000 REV. min.



CODICE			Articolo pompa N°		DIMENSIONI					PRESS. MAX. P2	MASSA (Kg)	NOTE
SERIE	CM³	CONFIG.	Rotazione		A	B	(IN) C	(OUT) D			BAR	
3TK	22,5	FG	SX	DX	61	128,7	G3/4-	Gi"				9
3TK	28	FG	3479	3480	63	133,7	G3/4"	Gi"				9
3TK	32	FG	3481	3482	64,5	137,2	G3/4"	Gi"				9.2
3TK	38	FG	3483	3484	66,5	142,7	G3/4"	Gi"				9.5
3TK	45	FG	3485	3486	69.5	149,2	G3/4"	Gi"				9.7
3TK	56	FG	3487	3488	77,2	160,2	G3/4"	Gi"				10.2
			3489	3490								