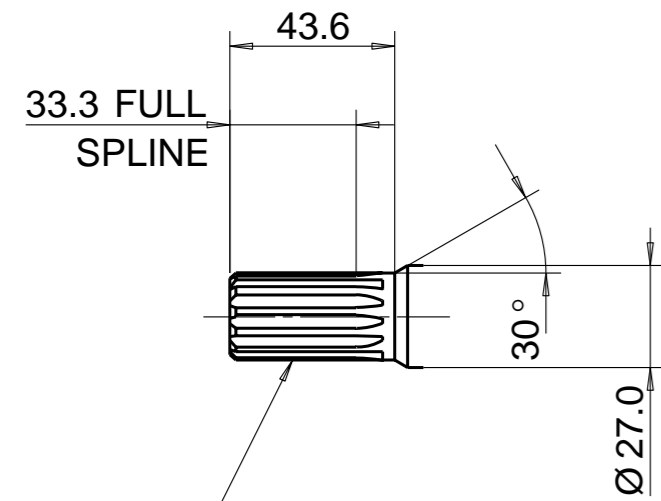
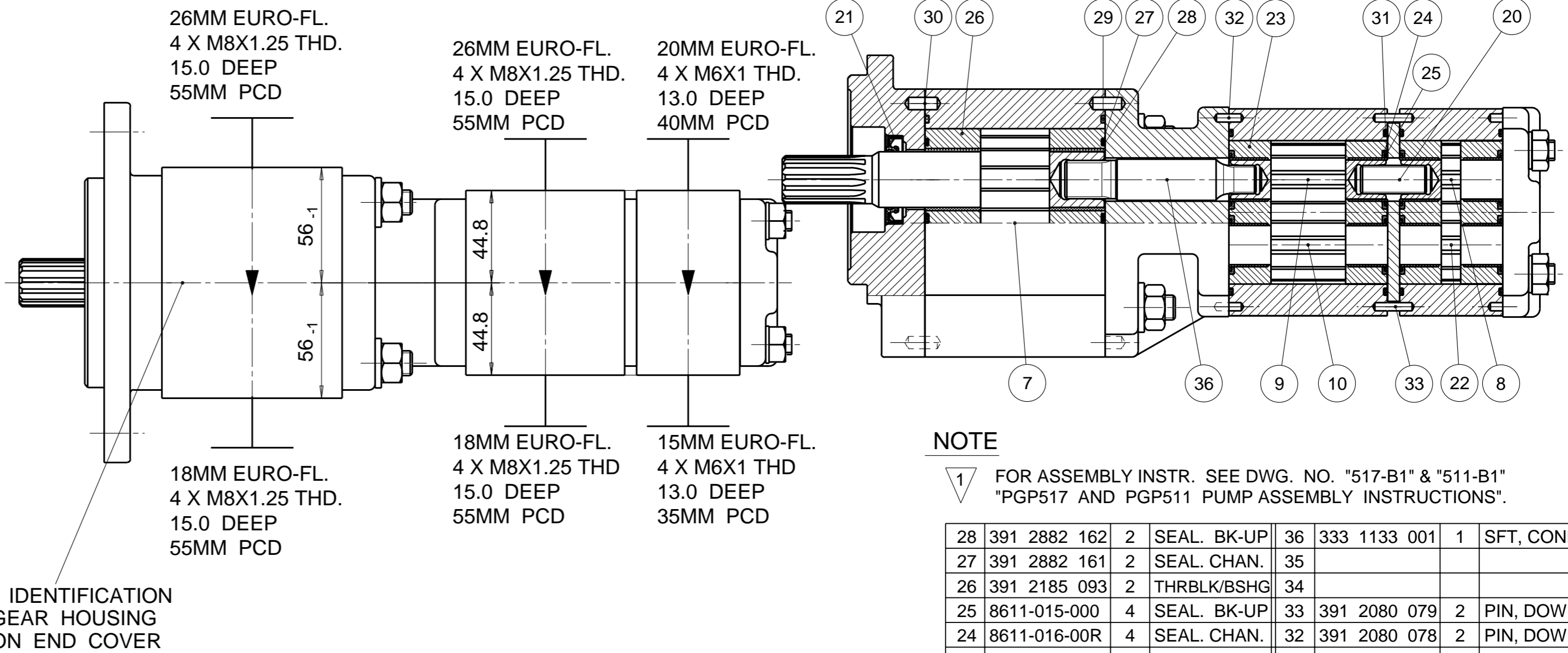
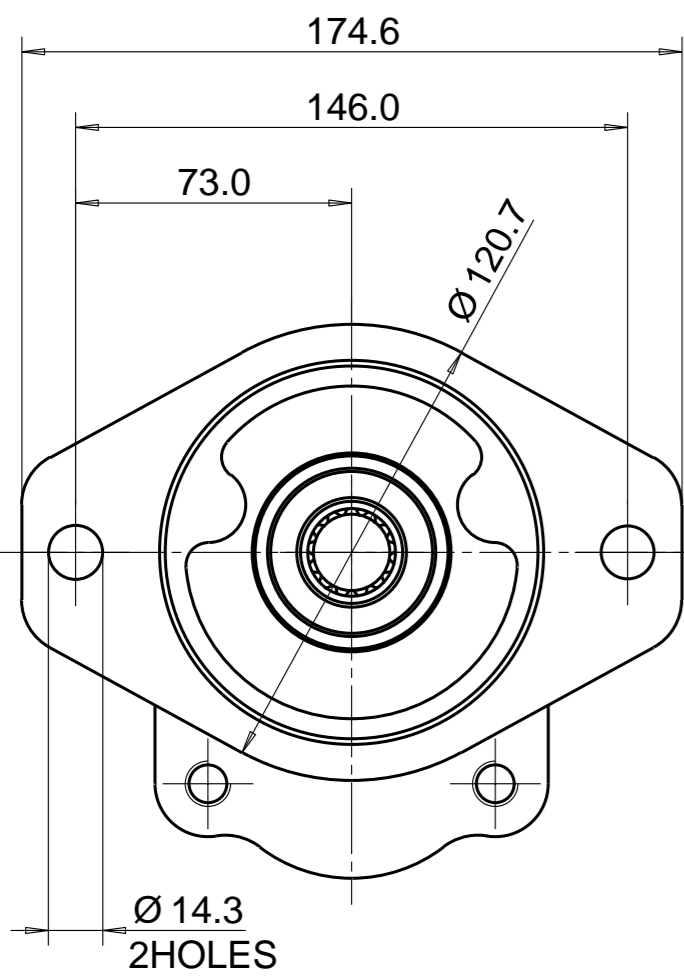


PUMP DATA	PUMP I	PUMP II	PUMP III
DISPLACEMENT	33,0 ccm	23,0 ccm	06,0 ccm
MAX. PRESSURE	210 bar	210 bar	210 bar
SPEED RATE 500 TO 2400	$\text{min}^{-1}$		
MAX. INPUT SHAFT TORQUE	345 Nm		
ROTATION	CLOCKWISE		



SAE INVOLUTE SPLINE  
13 TEETH - 16/32 PITCH  
FLAT ROOT SIDE FIT  
MAJOR DIA 21.67-21.79  
MINOR DIA 18.631 MAX.

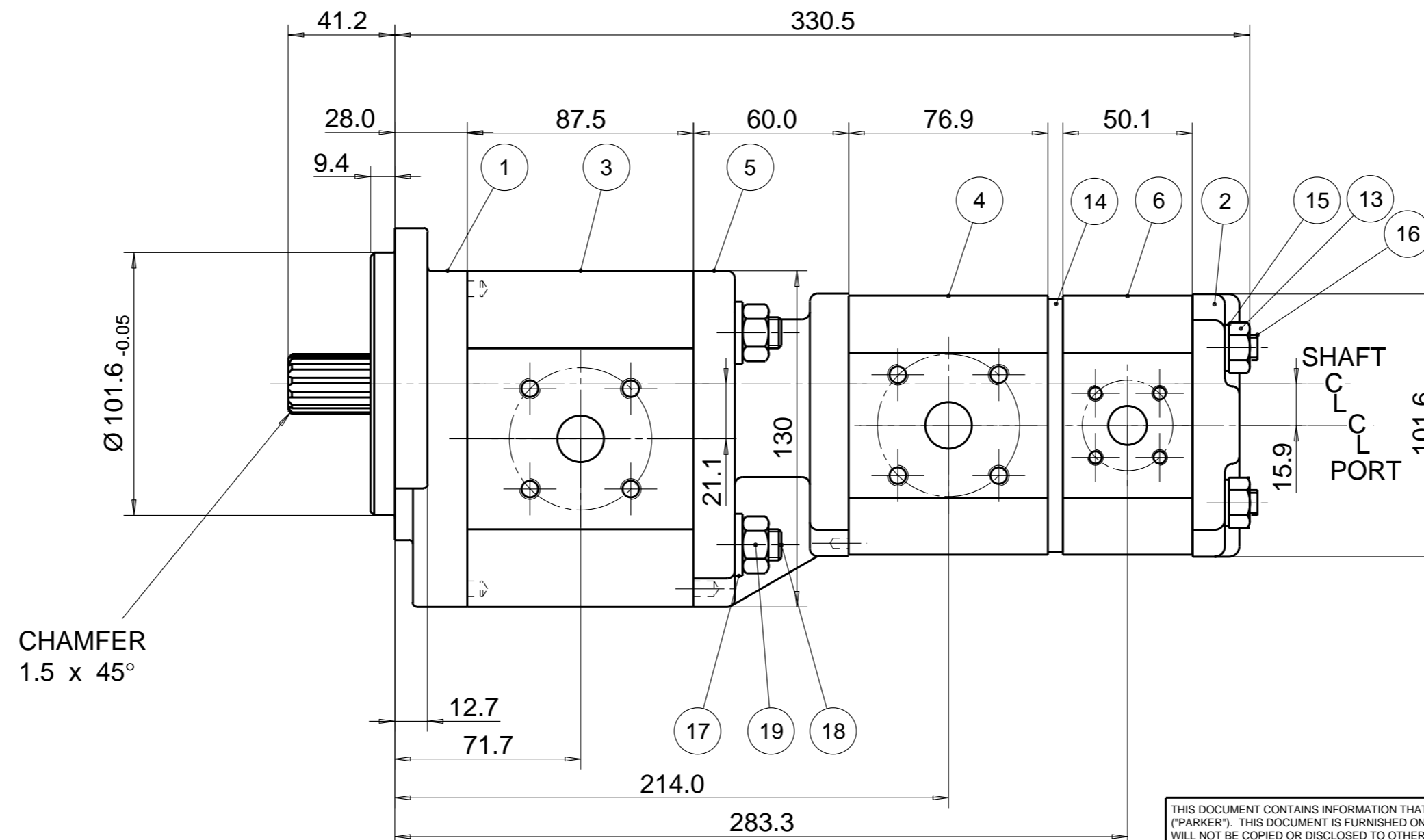
SEAL KIT  
391 1822 531



NOTE

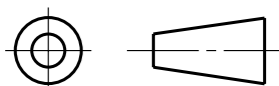
1 FOR ASSEMBLY INSTR. SEE DWG. NO. "517-B1" & "511-B1" "PGP517 AND PGP511 PUMP ASSEMBLY INSTRUCTIONS".

ITEM	PART NO	REQD	ITEM	PART NO	REQD
28	391 2882 162	2	SEAL. BK-UP	36	333 1133 001
27	391 2882 161	2	SEAL. CHAN.	35	
26	391 2185 093	2	THRBLK/BSHG	34	
25	8611-015-000	4	SEAL. BK-UP	33	391 2080 079
24	8611-016-00R	4	SEAL. CHAN.	32	391 2080 078
23	8898-207-00U	4	THRBLK/BSHG	31	9313-145-00B
22	334 2706 000	1	DRIVEN GEAR	30	391 2080 080
21	391 2883 058	1	SEAL. LIP	29	391 2882 148



ITEM	PART NO	REQD	DESCRIPTION
20	332 1133 001	1	SFT, CONN.
19	391 1451 149	4	NUT
18	391 1425 637	4	STUD DIN 939 -120MM -10.9
17	391 3782 232	4	WASHER
16	391 1425 565	4	CAPSCREW ( 173MM )
15	391 3782 231	4	WASHER
14	391 2183 232	1	PLATE, MID
13	391 1451 167	4	NUT
12			
11			
10	334 2723 000	1	DRIVEN GEAR
9	334 2623 010	1	DRIVE GEAR
8	334 2606 000	1	DRIVE GEAR
7	333 2933 440	1	SET, GEAR SHAFT
6	334 8106 901	1	HOUSING, GEAR
5	333 3040 088	1	HOUSING, PEC
4	334 8123 906	1	HOUSING, GEAR
3	333 8133 906	1	HOUSING, GEAR
2	334 3000 100	1	HOUSING, PEC
1	333 5020 203	1	HOUSING, SEC

THIRD ANGLE PROJECTION



EXP NO.

FIRST USED

17 - 03 - 955

333 9531 125

SYM.

REVISIONS

THIS DOCUMENT CONTAINS INFORMATION THAT IS CONFIDENTIAL AND PROPRIETARY TO PARKER-HANNIFIN CORPORATION ("PARKER"). THIS DOCUMENT IS FURNISHED ON THE UNDERSTANDING THAT THE DOCUMENT AND THE INFORMATION IT CONTAINS WILL NOT BE COPIED OR DISCLOSED TO OTHERS OR USED FOR ANY PURPOSE OTHER THAN CONDUCTING BUSINESS WITH PARKER, AND WILL BE RETURNED AND ALL FURTHER USE DISCONTINUED UPON REQUEST BY PARKER. ALL RIGHTS RESERVED.

**Parker** Pump & Motor Division  
Chemnitz

PGP517B0330CD1H3NJ9J8S-511B0230XJ9J8S-511A0060XJ7J5B1B1

MATERIAL	ADM CTR	P	TOLERANCES UNLESS OTHERWISE SPECIFIED = REF. DIMENSIONS	DR. BY	DATE	CH. BY	DATE	SCALE
H.E.-STD:				TG	31MAR17	JS	31MAR17	1/2
	REV DTE	000000		<b>333 9531 125</b>				
	WT	14.47 kg	DIMENSIONS ARE MM	© 2017 Parker Hannifin Corporation				