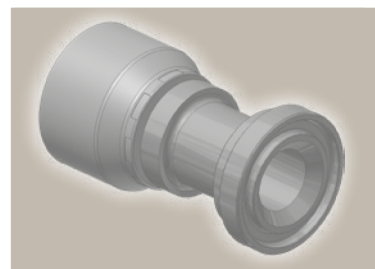
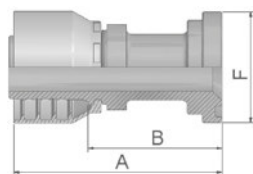


15 ISO 6162-1 – Flansch

ISO 12151-3-S-L – SFL
(21,0 MPa/ 3000 psi)



| Bestell-Nr. | | Schlauch ID | | | | Flansch | A | B | F |
|-------------|-------------|-------------|-------|------|------|---------|-----|----|----|
| Serie 46 | Serie 48 | DN | Zoll | Size | mm | Zoll | mm | mm | mm |
| 11546-8-8 | 11548-8-8 | 12 | 1/2 | -8 | 12,7 | 1/2 | 74 | 50 | 30 |
| 11546-12-8 | 11548-12-8 | 12 | 1/2 | -8 | 12,7 | 3/4 | 51 | 27 | 38 |
| 11546-12-10 | 11548-12-10 | 16 | 5/8 | -10 | 15,9 | 3/4 | 55 | 30 | 38 |
| 11546-12-12 | 11548-12-12 | 19 | 3/4 | -12 | 19,1 | 3/4 | 81 | 55 | 38 |
| 11546-16-12 | 11548-16-12 | 19 | 3/4 | -12 | 19,1 | 1 | 56 | 30 | 45 |
| 11546-20-12 | 11548-20-12 | 19 | 3/4 | -12 | 19,1 | 1 1/4 | 62 | 36 | 51 |
| 11546-16-16 | 11548-16-16 | 25 | 1 | -16 | 25,4 | 1 | 84 | 54 | 45 |
| 11546-20-16 | 11548-20-16 | 25 | 1 | -16 | 25,4 | 1 1/4 | 65 | 35 | 51 |
| 11546-24-16 | 11548-24-16 | 25 | 1 | -16 | 25,4 | 1 1/2 | 68 | 38 | 60 |
| | 11548-16-20 | 31 | 1 1/4 | -20 | 31,8 | 1 | 111 | 64 | 45 |
| 11546-20-20 | | 31 | 1 1/4 | -20 | 31,8 | 1 1/4 | 114 | 76 | 51 |
| | 11548-20-20 | 31 | 1 1/4 | -20 | 31,8 | 1 1/4 | 119 | 72 | 51 |
| 11546-24-20 | | 31 | 1 1/4 | -20 | 31,8 | 1 1/2 | 72 | 35 | 60 |
| | 11548-24-20 | 31 | 1 1/4 | -20 | 31,8 | 1 1/2 | 82 | 35 | 60 |
| | 11548-32-20 | 31 | 1 1/4 | -20 | 31,8 | 2 | 123 | 76 | 71 |
| | 11548-24-24 | 38 | 1 1/2 | -24 | 38,1 | 1 1/2 | 117 | 79 | 60 |
| | 11548-32-24 | 38 | 1 1/2 | -24 | 38,1 | 2 | 80 | 42 | 71 |
| | 11548-24-32 | 51 | 2 | -32 | 50,8 | 1 1/2 | 129 | 81 | 60 |
| | 11548-32-32 | 51 | 2 | -32 | 50,8 | 2 | 127 | 79 | 71 |

Entsprechende Flansch-Hälften und O-Ringe finden Sie im Abschnitt Eb.

Serie 46/48

Geprüfte **Armaturenserien** für Schlauchtypen, je nach size:

Auch in Edelstahl erhältlich. Details siehe CAT 4400.1/DE

| | | | | | | | | | | | | | | | | | |
|--------------------------|-------|-------|-------|-------|-------|---------|------------|-------|-------|-----|-------|-------|------------|-------|-------|-----|-----|
| 46 oder 48 | 441 | 461LT | 462 | 462TC | 462ST | 629PU | 692PU Twin | | | | | | | | | | |
| 46 | 463 | 492 | 492ST | 492TC | 692 | 692Twin | 692TC | BCH1 | | | | | | | | | |
| 48 | 301SN | 304 | 387 | 387ST | 387TC | 421RH | 421SN | 426 | 421TC | 436 | 441RH | 462PU | 462PU Twin | BCH2 | HT2 | ... | |
| | 471TC | 477 | 477ST | 477TC | 477RH | 487 | 487ST | 487TC | 493 | 787 | 787TC | 787ST | 797 | 797TC | 797ST | 811 | 881 |