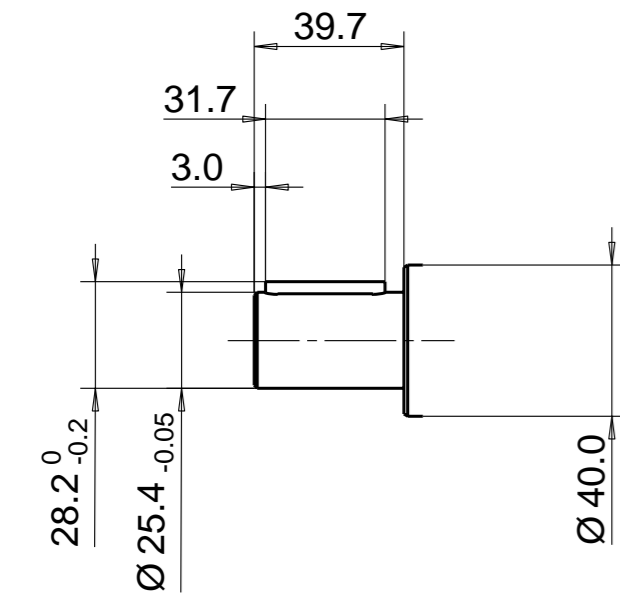


PUMP DATA	PUMP I	PUMP II & III	PUMP IV
DISPLACEMENT	23,0 ccm	14,0 ccm	6,0 ccm
MAX. PRESSURE	200 bar	120 bar	100 bar
SPEED RATE 500 TO	2600 min ⁻¹		
MAX. INPUT SHAFT TORQUE	228 Nm		
ROTATION	ANTI CLOCKWISE		

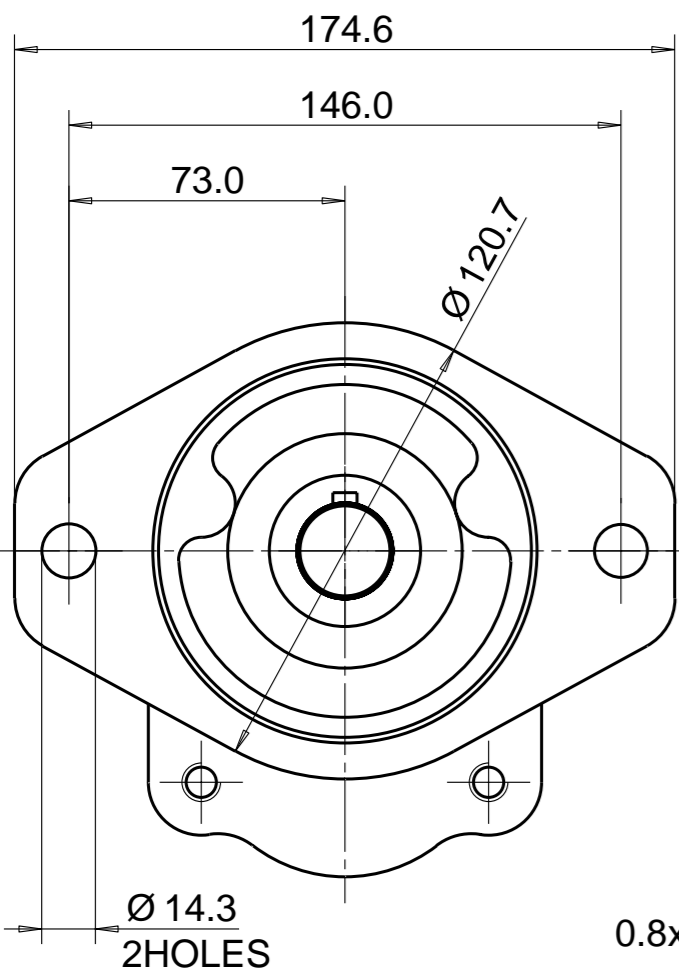


NAMEPLATE LOCATION
GLUED LABEL

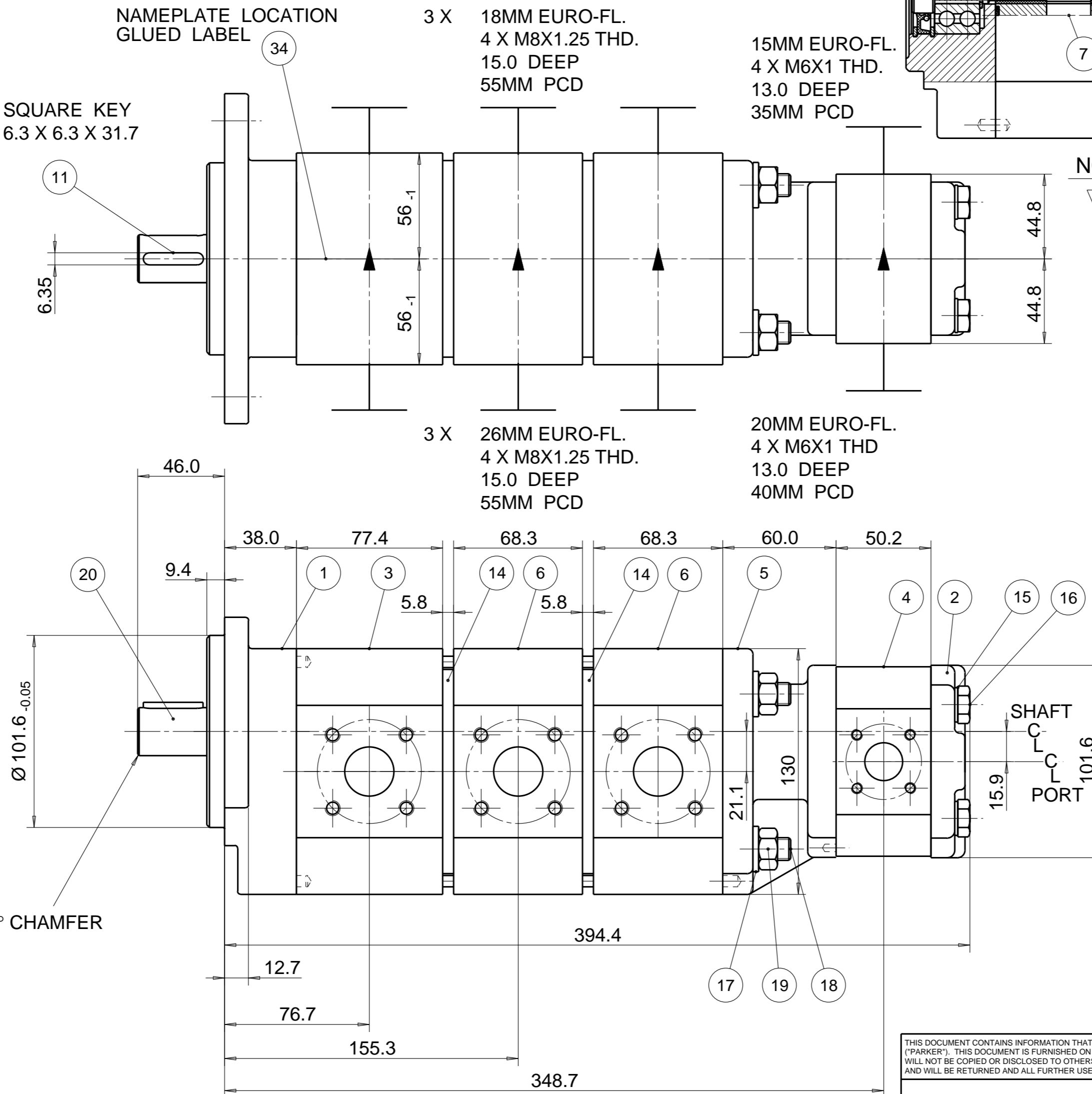
SQUARE KEY
6.3 X 6.3 X 31.7

3 X 18MM EURO-FL.
4 X M8X1.25 THD.
15.0 DEEP
55MM PCD

15MM EURO-FL.
4 X M6X1 THD.
13.0 DEEP
35MM PCD

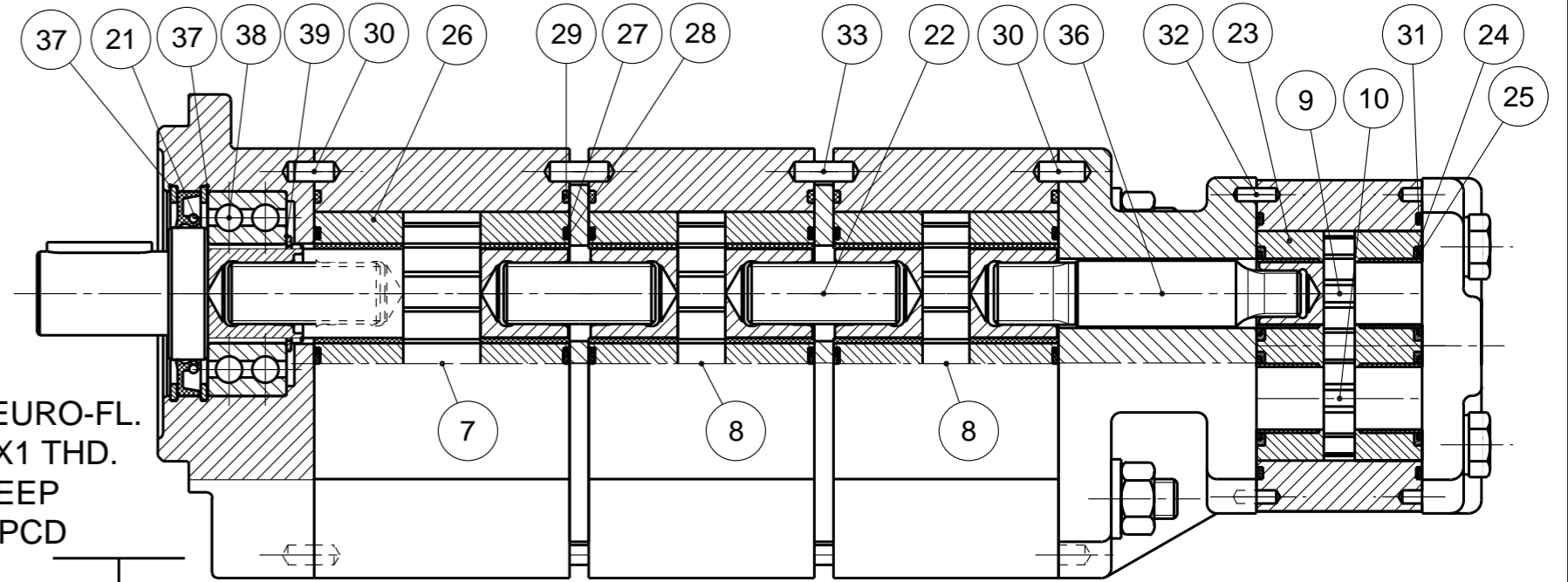


0.8x45° CHAMFER



3 X 26MM EURO-FL.
4 X M8X1.25 THD.
15.0 DEEP
55MM PCD

20MM EURO-FL.
4 X M6X1 THD
13.0 DEEP
40MM PCD



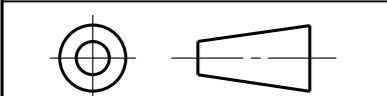
NOTE

1 FOR ASSEMBLY INSTRUCTIONS SEE DWG. NO. "517-B1" AND "511-B1"
"PGP517 AND PGP511 PUMP ASSEMBLY INSTRUCTIONS".

ITEM	PART NO	REQD	ITEM	PART NO	REQD		
39	391 2685 013	1	RING, SNAP	38	391 0381 127	1	BEARING,BAL
				37	391 2686 064	2	RING, SNAP
28	391 2882 162	6	SEAL. BK-UP	36	333 1133 001	1	SFT, CONN.
27	391 2882 161	6	SEAL. CHAN.	35			
26	391 2185 093	6	THRBLK/BSHG	34	391 2183 396	1	NAMEPLATE
25	8611-015-000	2	SEAL. BK-UP	33	391 2080 081	4	PIN, DOWEL
24	8611-016-00R	2	SEAL. CHAN.	32	391 2080 078	2	PIN, DOWEL
23	8898-207-00U	2	THRBLK/BSHG	31	9313-145-00B	2	SEAL, SECT.
22	324 1133 001	3	SFT, CONN.	30	391 2080 080	4	PIN, DOWEL
21	8697527	1	SEAL. LIP	29	391 2882 148	6	SEAL. SECT.

ITEM	PART NO	REQD	DESCRIPTION
20	73330:4116395	1	SHAFT, CONT.
19	391 1451 149	4	NUT
18	391 1425 647	4	STUD DIN 939 -260MM -10.9
17	391 3782 232	4	WASHER
16	391 1401 541	4	CAPSCREW (80MM)
15	391 3782 231	4	WASHER
14	391 2183 238	2	PLATE, MID
13			
12			
11	391 1781 082	1	KEY
10	334 2706 000	1	DRIVEN GEAR
9	334 2606 000	1	DRIVE GEAR
8	333 2814 010	2	SET, GEAR SHAFT
7	333 2823 010	1	SET, GEAR SHAFT
6	333 8114 906	2	HOUSING, GEAR
5	333 3040 088	1	HOUSING, PEC, P517-P511
4	334 8106 901	1	HOUSING, GEAR
3	333 8123 906	1	HOUSING, GEAR
2	334 3000 100	1	HOUSING, PEC
1	333 5021 213	1	HOUSING, SEC

THIRD ANGLE PROJECTION



EXP NO.

FIRST USED

10 - 10 - 973

333 9545 001

SYM. REVISIONS

THIS DOCUMENT CONTAINS INFORMATION THAT IS CONFIDENTIAL AND PROPRIETARY TO PARKER-HANNIFIN CORPORATION ("PARKER"). THIS DOCUMENT IS FURNISHED ON THE UNDERSTANDING THAT THE DOCUMENT AND THE INFORMATION IT CONTAINS WILL NOT BE COPIED OR DISCLOSED TO OTHERS OR USED FOR ANY PURPOSE OTHER THAN CONDUCTING BUSINESS WITH PARKER, AND WILL BE RETURNED AND ALL FURTHER USE DISCONTINUED UPON REQUEST BY PARKER. ALL RIGHTS RESERVED.

PGP517B0230AM2L3NJ9J8S-517B0140XJ9J8S-517B0140XJ9J8S-511A0060XJ7J5B1B1

MATERIAL	ADM CTR P	DR.BY	DATE	CH.BY	DATE	SCALE
H.E.-STD:	REV DTE 000000	WS	25OCT10	JS	25OCT10	1/2
	WT 25.7 Kg	DIMENSIONS ARE <u>MM</u>				

Parker Pump & Motor Division
Chemnitz

333 9545 001

© 2010 Parker Hannifin Corporation