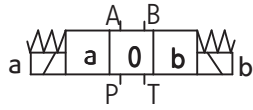


# SCHEMES

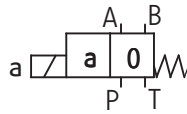
Graphic symbols for 3- position directional spool valves

WE6...-32/...

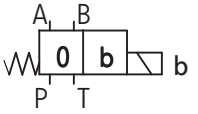


Graphic symbols for 2- position directional spool valves

WE6...A -32/...



WE6...B -32/...



## Graphic symbols for spools

working and indirect positions

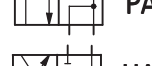
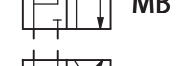
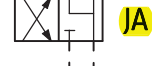
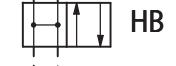
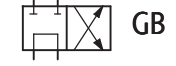
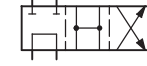
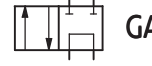
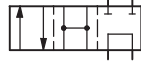
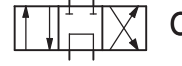
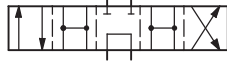
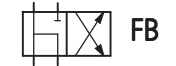
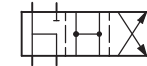
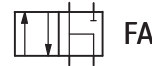
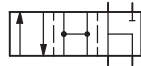
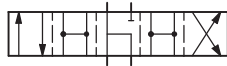
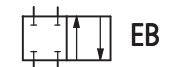
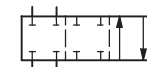
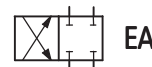
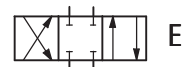
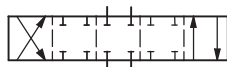
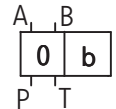
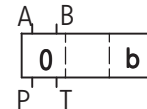
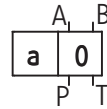
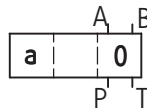
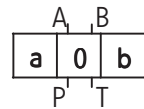
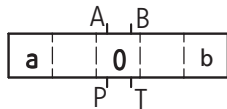
working positions

working and indirect positions

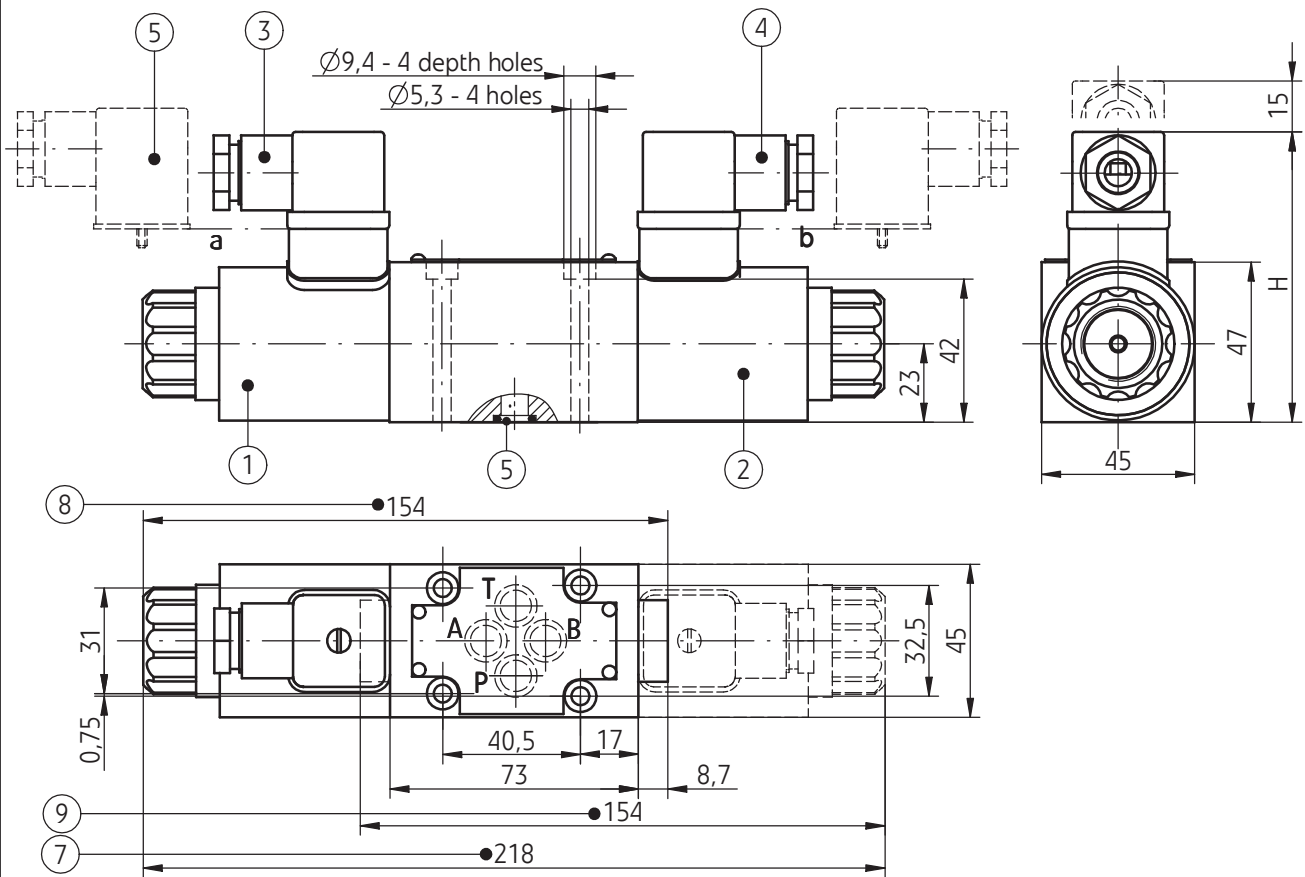
working positions

working and indirect positions

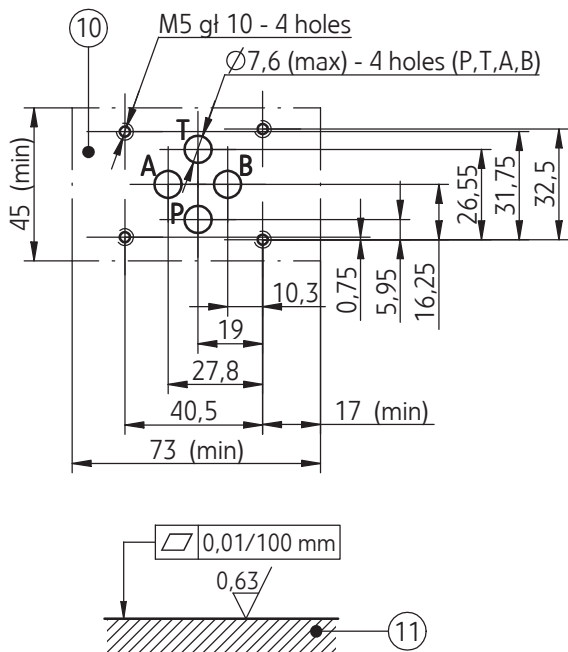
working positions



# OVERALL AND CONNECTION DIMENSIONS



electrical connection type		dimension H
plug-in-connector ISO 4400 (DIN 43650 - A)	control voltage - DC 12V, 24V, 110V	86
plug-in-connector ISO 4400 (DIN 43650 - A) with rectifier	control voltage - AC 110V, 220V, 230V	93



- 1 - Solenoid **a**
- 2 - Solenoid **b**
- 3 - Plug-in-connector **a** (ISO 4400 type)
- 4 - Plug-in-connector **b** (ISO 4400 type)
- 5 - Plug-in-connector (ISO 4400 type) with rectifier
- 6 - **O-ring 9,2 x 1,8** - 4 pcs/kit
- 7 - Directional spool valve size with 2 solenoids - **a, b**
  - **3-position directional spool valve springs centered d** (spool schemes: **E, F, G, H, J, L, M, P, U** - according to page 3)
  - **2-position directional spool valve without return springs**
  - **2-position directional spool valve without springs and with detent** (spool schemes: **A, C, D** - according to page 4)
- 8 - Directional spool valve size with 1 solenoid - **a**
  - **2-position springs centered** (spool schemes: **A, C, D, EA, FA, GA, HA, JA, LA, MA, PA, UA** - according to page 3 and 4)
- 9 - Directional spool valve size with 1 solenoid - **b**
  - **2-position springs centered** (spool schemes: **B, Y, EB, FB, GB, HB, JB, LB, MB, PB, UB** - according to page 3 and 4)
- 10 - Porting pattern for directional spool valve configuration of connection holes in accordance with the following standards:
  - **CETOP RP 121H** - identified by CETOP 4.2-4-03 (nominal size **CETOP 03**)
  - **ISO 4401** - identified by ISO 4401-03-02-0-94 mounting bolts **M5 x 50 - 10.9** in accordance with **PN -EN ISO 4762** - 4 pcs/kit, tightening torque **Md = 9Nm**
- 11 - Subplate surface required

## HOW TO ORDER

	<b>WE</b>	<b>6</b>		/						
--	-----------	----------	--	---	--	--	--	--	--	--

### Number of service ports

**3-way** - for spools A, B = **3**

**4-way** - for the other spools = **4**

### Nominal size (NS)

**NS6** = **6**

### Spool type

**spool schemes** - according to **page 3, 4**

### Series number

(30-39) - connection and installation dimensions unchanged = 3X

**series 32** = **32**

### Spool positioning

**spring centering** = **no designation**

without springs return = **0**

without springs return with detent = **OF**

### Control voltage for solenoids

12V DC = **G12**

**24V DC** = **G24**

### Manual override

solenoids without manual override = **no designation**

**solenoids with manual override** = **N**

### Electrical connection

**plug-in-connector ISO 4400 type without LED** = **Z4**

plug-in-connector ISO 4400 type with LED = **Z4L**

2-poles male AMP Junior Timer connector (exists for G12 and G24 versions only) = **J**

### Throttle insert (in port P)

**without throttle insert** = **no designation**

throttle insert  $\phi$  0,8 = **B 08**

throttle insert  $\phi$  1,0 = **B 10**

throttle insert  $\phi$  1,2 = **B 12**

### Sealing

**NBR** (for fluids on mineral oil base) = **no designation**

**FKM** (for fluids on phosphate ester base) = **V**