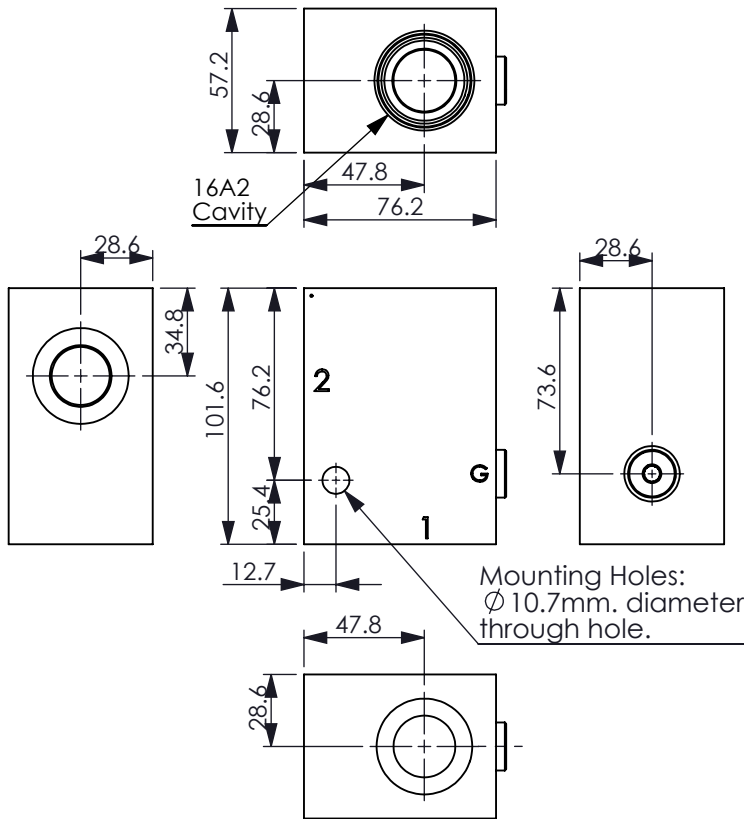
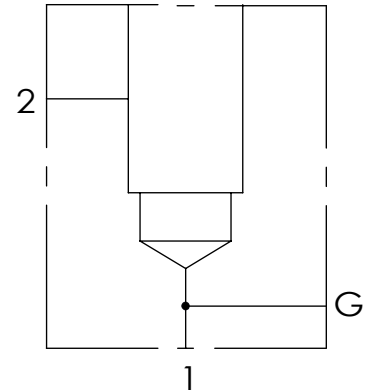


Ordering Code: **ML-16A2-X-Y 01-Z**



UNIT:mm



TECHNICAL DATA

Aluminum Body Pressure Rating: 210 bar

Steel Body Pressure Rating: 350 bar

Cavity:

Refer to 16A2

* Refer to Winner Cartridge Valves Catalog.

Aluminum	0.97 kg(WITHOUT VALVES)
----------	-------------------------

Steel	2.58 kg(WITHOUT VALVES)
--------------	--------------------------------

* If you need the special specification. Please contact us.

X	PORT SIZE		
	PORTS	PORT	
	1,2	G	
G06G	G 3/4"	G 1/4"	
G08G	G 1"	G 1/4"	
G10G	G 1-1/4"	G 1/4"	
S12G	SAE 12	1/4"NPT	
S16G	SAE 16	1/4"NPT	
S20G	SAE 20	1/4"NPT	

Y	BODY MATERIAL	
A	HIGH-STRENGTH ALUMINUM	
T	STEEL (black oxide)	

Z	CARTRIDGE VALVES SELECTION	
	WITHOUT VALVE	
RPOA	RP16A20AL(380 LPM,7~210 bar)	
CV2003	CV16A2003N (320LPM,0.3bar)	
FROA	FR16A20AL (0.8-95LPM)	

Please refer to the list price of cartridge program.