

SEQUENCE VALVE

(Direct Acting with Reverse Flow Check)

Ordering Code: **SC-2A-X-Y-Z**

Control Option:
Maximum extension
from locating shoulder.
(L Control shown)

Ø25

28.5 Hex.
(1 1/8 inch)

Drain ③

1.00-14UNS-2A

Sequence ②

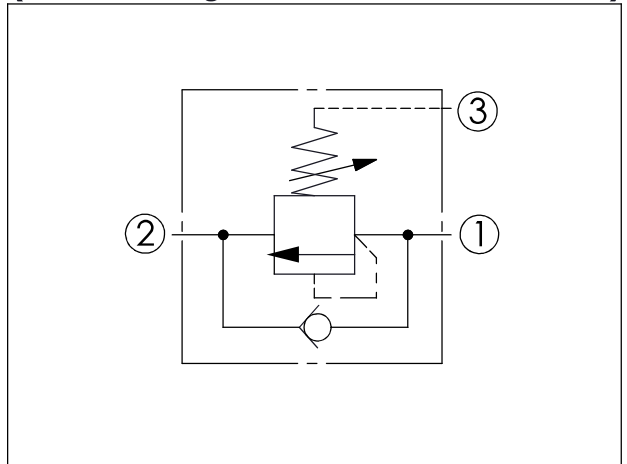
Inlet ①

89

35.1

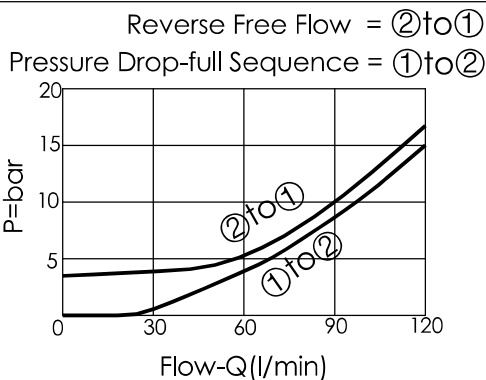
Locating
Shoulder

UNIT:mm



TECHNICAL DATA

Max. Setting:	420	bar
Rated flow:	120	l/min
Cavity-Tooling:	2A-3	
Installation torque:	60-70	Nm
Weight:	0.36 (Z:L)	kg



X OPERATION

30 Standard Type

Response Time-Typical (2 ms)
Maximum Leakage (0.3 cc/min./70 bar)
(46 cSt, 40°C)

Y	SPRINGS	
	ADJUSTMENT RANGES	
A	35-210 bar	(70 bar Standard Setting)
B	20-105 bar	(70 bar Standard Setting)
C	140-420 bar	(140 bar Standard Setting)
D	14-55 bar	(28 bar Standard Setting)
E	7-28 bar	(14 bar Standard Setting)
W	55-315 bar	(70 bar Standard Setting)

※ Port ② to Port ① Check Valve Cracking Pressure 2.8 bar

Z OPTIONS

L	Leakproof hex. socket screw.	
C	Stainless Steel Tamper Resistant Cover.	