

Ordering Code: **CO-2A-X-Y-Z**

28.5 Hex.
(1 1/8 inch)

Pilot (3)

1.00-14UNS-2A

Valve (2)

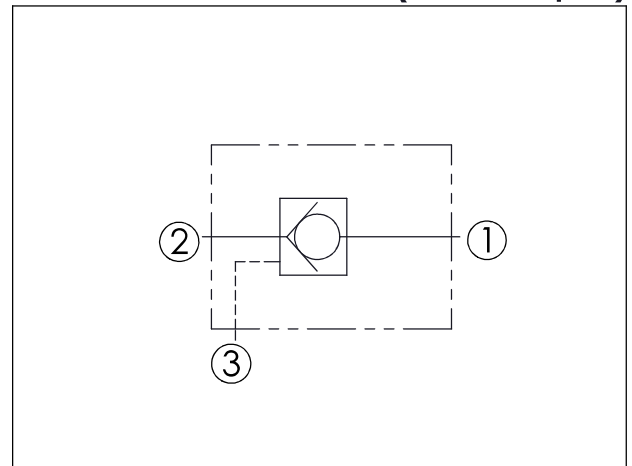
Load (1)

35

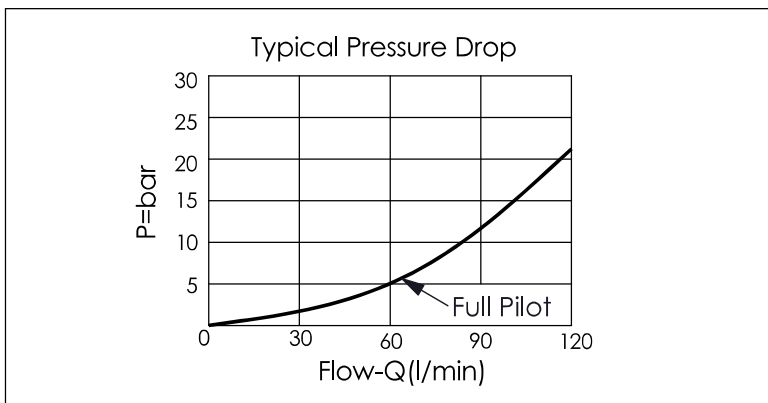
35.1

Locating Shoulder

UNIT:mm



TECHNICAL DATA		
Max. pressure:	350	bar
Rated flow:	120	l/min
Cavity-Tooling:	2A-3	
Installation torque:	60-70	Nm
Weight:	0.24 (Z:N,NP)	kg



X	OPERATION	
30	2 to 1 (Free Flow)	Pilot Ratio 3:1
3C	2 to 1 (Free Flow)	Sealed Pilot Piston Pilot Ratio 3:1

Y	SPRINGS	
	Cracking pressure	
015	0.15 bar	
03	0.3 bar	
10	1.0 bar	
20	2.0 bar	
35	3.5 bar	
50	5.0 bar	
70	7.0 bar	

Z	OPTION	
N	Non-adjustable	
NP	Non-adjustable With stainless steel external metal components (Buna-N Seal)	