

HINWEISE UND ANGABEN

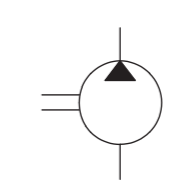
Betriebsbedingungen siehe Y 510 201 598
 Die Darstellung zeigt eine rechtsdrehende Pumpe (Auf Antriebswelle gesehen).
 Bei linksdrehender Pumpe ist Druck- und Sauganschluß vertauscht.
 Die Pumpe darf nur in angegebener Drehrichtung drehen.

Alle Ölanschlüsse für Transport und Lagerung staubdicht verschlossen, z.B. mit Kunststoffstopfen

ADDITIONAL INFORMATION

WORKING CONDITIONS SEE Y 510 201 598
 CW ROTATION SHOWN.
 CCW ROTATION PUMPS HAVE PRESSURE AND SUCTION PORT ON OPPOSITE SIDE. PUMP MUST BE DRIVEN IN PROPER DIRECTION ONLY.

ALL OIL PORTS CLOSED PROPERLY AGAINST DUST FOR TRANSPORT AND STORAGE, E.G. WITH PLASTIC CLOSURE CAPS.



| Entwurfs-Zeichnungs-Nr. | Bestell-Nr. | Typ-Aufschrift | Dreh-richtung | Volumen [cm ³ /U] | max. Drehzahl [U/min] | max. Druck (intermitt.) [bar] | A | B | Bemerkungen |
|-------------------------|---------------|----------------------|------------------|------------------------------|-----------------------|-------------------------------|-----------------|-------|-------------|
| DRAWING | PART NUMBER | DESIGNATION | DIR. OF ROTATION | DISPLACEMENT | MAX. SPEED | MAX. PRESSURE | DIMENSIONS [mm] | | REMARKS |
| B 510 830 028 | 0 510 715 012 | . | rechts/CW | 22.5 | 3000 | 230 | 58.6 | 116.1 | . |
| B 510 230 056 | 0 510 715 305 | . | links/CCW | 22.5 | 2500 | 210 | 52.6 | 104.1 | . |
| B 510 230 055 | 0 510 715 003 | . | rechts/CW | 22.5 | 2500 | 210 | 52.6 | 104.1 | . |
| B 510 230 074 | 0 510 615 341 | ...-11-019 LCN 20 MB | links/CCW | 19 | 3000 | 230 | 45.0 | 98.7 | . |
| B 510 230 073 | . | . | rechts/CW | 19 | 3000 | 230 | 45.0 | 98.7 | . |
| B 510 230 072 | 0 510 615 314 | ...-11-016 LCN 20 MB | links/CCW | 16 | 3000 | 280 | 45.0 | 93.7 | . |
| B 510 230 098 | 0 510 615 014 | ...-11-016 RCN 20 MB | rechts/CW | 16 | 3000 | 280 | 45.0 | 93.7 | . |
| B 510 230 071 | 0 510 615 006 | ...-11-016 RCN 20 MB | rechts/CW | 16 | 3000 | 280 | 45.0 | 93.7 | . |
| B 510 230 070 | . | ...-11-014 LCN 20 KB | links/CCW | 14 | 3000 | 280 | 45.0 | 90.3 | . |
| B 510 230 069 | 0 510 515 015 | ...-11-014 RCN 20 MB | rechts/CW | 14 | 3000 | 280 | 45.0 | 90.3 | . |
| B 510 230 068 | 0 510 515 310 | ...-10-011 LCN 20 MB | links/CW | 11 | 3500 | 280 | 44.5 | 85.3 | . |
| B 510 230 067 | 0 510 515 004 | ...-11-011 RCN 20 MB | rechts/CW | 11 | 3500 | 280 | 44.5 | 85.3 | . |
| B 510 230 066 | 0 510 415 313 | ...-11-008 LCN 20 MB | links/CCW | 8 | 4000 | 280 | 40.7 | 80.3 | . |
| B 510 230 065 | 0 510 415 005 | ...-10-008 RCN 20 MB | rechts/CW | 8 | 4000 | 280 | 40.7 | 80.3 | . |
| B 510 230 064 | 0 510 315 304 | ...-11-005 LCN 20 MB | links/CCW | 5.5 | 4000 | 280 | 38.6 | 76.2 | . |
| B 510 230 063 | 0 510 315 004 | ...-11-005 RCN 20 MB | rechts/CW | 5.5 | 4000 | 280 | 38.6 | 76.2 | . |
| B 510 230 062 | 0 510 215 306 | ...-11-004 LCN 20 MB | links/CCW | 4 | 4000 | 280 | 37.4 | 73.7 | . |
| B 510 230 061 | 0 510 215 006 | ...-11-004 RCN 20 MB | rechts/CW | 4 | 4000 | 280 | 37.4 | 73.7 | . |

| | | |
|---|--------------|---------------|
| general tolerances for/Allgemeintoleranzen fuer | | |
| lin.dim./L-masse | radii/Radien | angles/Winkel |
| ± 0.3 | -- | ± 1° |
| all linear dimensions in/Alle Laengenmasse in | | mm |
| A-document/A-Dokument | AS1855600 | |

| | | | | | | | |
|-------------------|----------|------------|---------------|-------------------------------|------------|---------------------------|-----------------------|
| BD -- | 20131113 | bhl2si | bhl2si | len2si | 7930 | DC-MA/EPE1 | R7930C000437 |
| AA -- | 19900709 | MG | MG | 7930 | DC-MA/EPE1 | erstellt | |
| Ind./Change/Aend. | YYYYMMDD | Drawn/Gez. | Checked/Prüf. | Releas./Freig. | BWN | Resp. dept./Verantw. Abt. | Add. info./Zus. Info. |
| Lang./Spr. | Syst. PE | Wght./Gew. | Scale/M.stab | HY GEAR PUMP HY-ZAHNRADPUMPE | | | Sheet/Bl. 1/1 |
| EN/DE | | | 1:2 | AGZ A 510 230 061 | | | Format A2 |
| MNR | | | | OFFER DRAWING ANGEBOTSZEICHN. | Repl. for | | Repl. by |

© Alle Rechte bei Bosch Rexroth AG. auch für den Fall von Schutzrechtsanmeldungen. Jede Verfügungsbefugnis, wie Kopier- und Weitergaberecht, bei uns.
 This document, as well as the data, specifications and other information set forth in it, are the exclusive property of Bosch Rexroth AG. It may not be reproduced or given to third parties without its consent.

R451855600 / A510230061 / BD.1 / MODEL NAME / DRAFT / BD.1