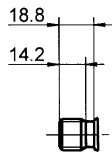
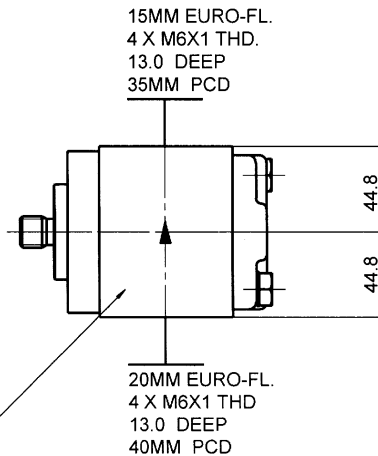


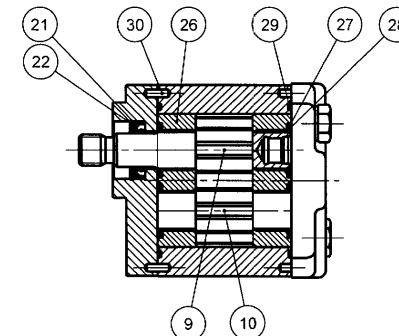
| PUMP DATA | |
|-------------------------|-------------------------------|
| DISPLACEMENT | 19,0 ccm |
| MAX. CONT. PRESSURE | 250 bar |
| SPEED RATE | 500 TO 2500 min ⁻¹ |
| MAX. INPUT SHAFT TORQUE | 101 NM |
| ROTATION | ANTI CLOCKWISE |



DIN 5482 INVOLUTE SPLINE
B 17 X 14; 9 TEETH
FLAT ROOT SIDE FIT
MAJOR DIA. 16.39 - 16.50
MINOR DIA. 13.50
PROFIL OFFSET 0,600 mm



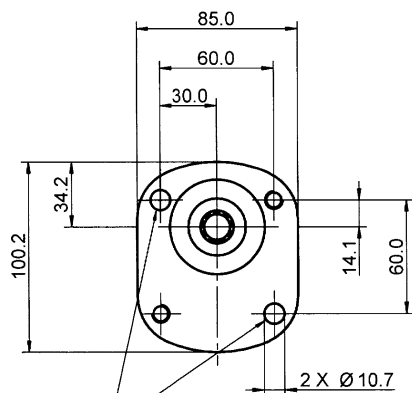
UNIT IDENTIFICATION
ON GEAR HOUSING
OR COVER



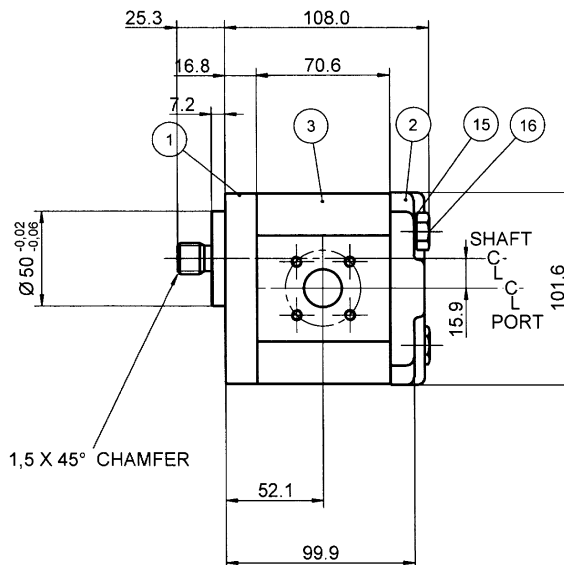
NOTE

FOR ASSEMBLY INSTRUCTIONS SEE DWG. NO. "511-B1"
"PGP511 PUMP ASSEMBLY INSTRUCTIONS".

| ITEM | PART NO | REQ'D | ITEM | PART NO | REQ'D |
|------|--------------|-------|-------------|---------|----------------------------|
| 28 | 8611-015-000 | 2 | SEAL. BK-UP | 36 | |
| 27 | 8611-016-00R | 2 | SEAL. CHAN. | 35 | |
| 26 | 8898-207-00U | 2 | THRBLK/BSHG | 34 | |
| 25 | | | | 33 | |
| 24 | | | | 32 | |
| 23 | | | | 31 | |
| 22 | 9211-323-00B | 1 | RING. SNAP | 30 | 391 2080 078 2 PIN. DOWEL |
| 21 | 8301-019-00K | 1 | SEAL. LIP | 29 | 9313-145-00B 2 SEAL. SECT. |

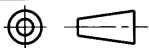


MOUNTING HOLES
2 X M10 - 8.8
TORQUE 42+5 Nm



| 20 | | | | | |
|------|--------------|-------|---------------|----------|--|
| 19 | | | | | |
| 18 | | | | | |
| 17 | | | | | |
| 16 | 391 1401 545 | 2 | SCREW | (100 MM) | |
| 15 | 391 3782 231 | 2 | WASHER | | |
| 14 | | | | | |
| 13 | | | | | |
| 12 | | | | | |
| 11 | | | | | |
| 10 | 334 2719 000 | 1 | DRIVEN GEAR | | |
| 9 | 334 1219 700 | 1 | DRIVE GEAR | | |
| 8 | | | | | |
| 7 | | | | | |
| 6 | | | | | |
| 5 | | | | | |
| 4 | | | | | |
| 3 | 334 8119 901 | 1 | HOUSING. GEAR | | |
| 2 | 332 3000 100 | 1 | HOUSING. PEC | | |
| 1 | 334 5051 202 | 1 | HOUSING. SEC | | |
| ITEM | PART NO | REQ'D | DESCRIPTION | | |

THIRD ANGLE PROJECTION



EXP. NO.

FIRST USED

03 - 11 - 99916

334 9112 592

SYM.

REVISIONS

THIS DOCUMENT CONTAINS INFORMATION THAT IS CONFIDENTIAL AND PROPRIETARY TO PARKER HANNIFIN CORPORATION ("PARKER"). THIS DOCUMENT IS FURNISHED ON THE UNDERSTANDING THAT THE DOCUMENT AND INFORMATION WILL BE NOT COPIED OR DISCLOSED TO OTHERS OR USED FOR ANY PURPOSE OTHER THAN CONDUCTING BUSINESS WITH PARKER AND WILL BE RETURNED AND ALL FURTHER USE DISCONTINUED UPON REQUEST BY PARKER. ALL RIGHTS RESERVED.

PGP511M0190AF1Q4NJ7J5B1B1

MATERIAL

H.E.-STD:

ADM CTR

REV DTE

WT 4 Kg

P

000000

4 Kg

DATE

DATE

SCALE

PG 25NOV03

UH 25NOV03

1/2

CH BY

DATE

SCALE

334 9112 592

DATE

SCALE

1/2

DATE

SCALE

Parker Hydraulic Controls Division
Werk Sachsenhydraulik
Chemnitz

DR BY PG 25NOV03 UH 25NOV03 1/2

334 9112 592

© 2003 Parker-Hannifin Corporation