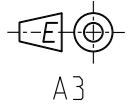


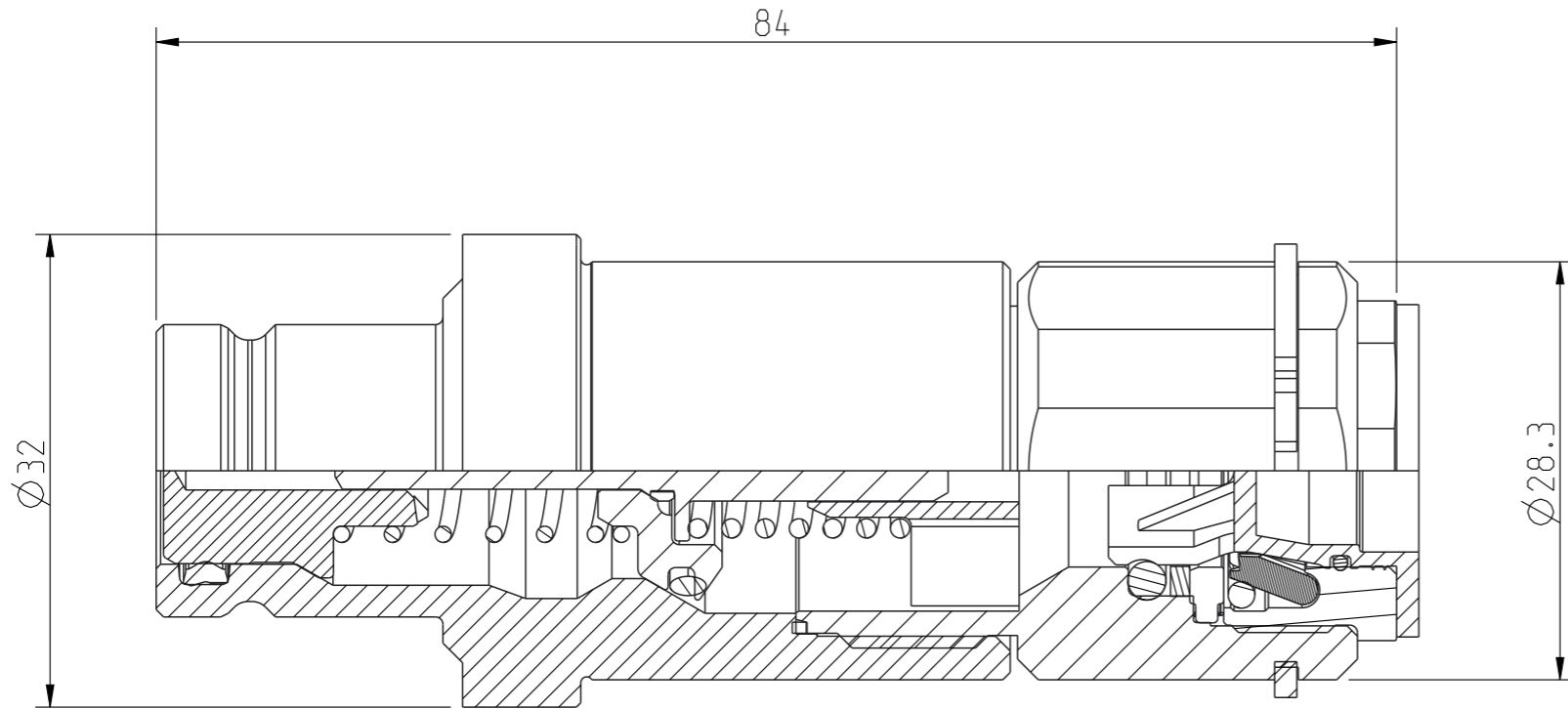
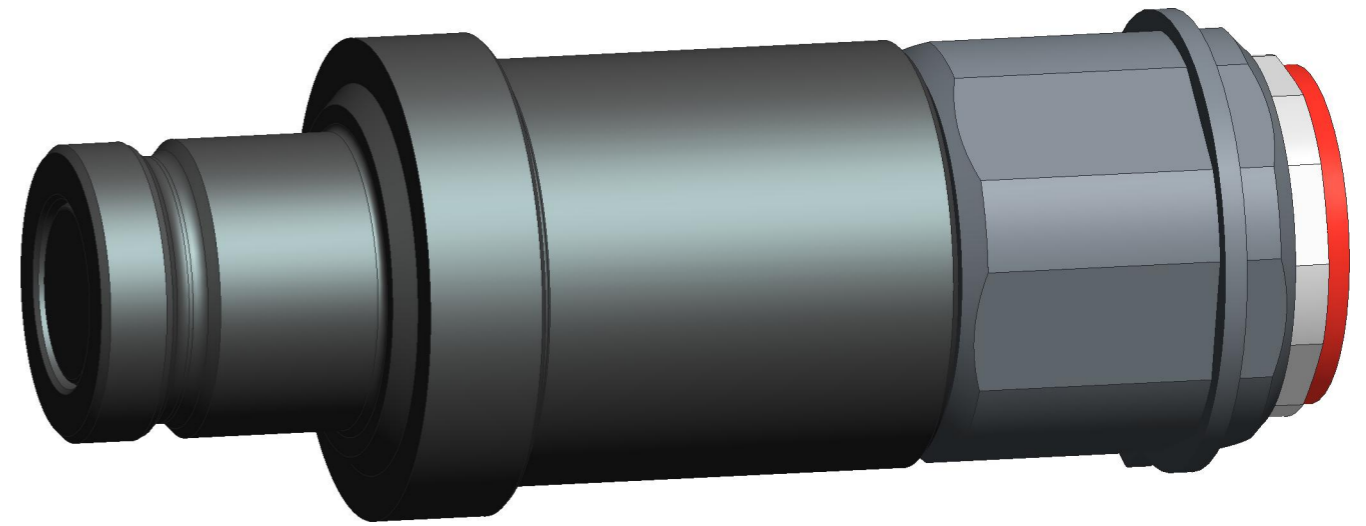
Alle rätigheter förbehålls.
All rights reserved.
Alle Rechte vorbehalten.

Diese Zeichnung darf weder ganz noch teilweise ohne unsere ausdrückliche Genehmigung kopiert oder auf andere Weise vervielfältigt werden. Werden. Zuwiderhandlungen werden gerichtlich verfolgt.

Denna handling får ej utan vårt medgivande delges annan, kopieras eller eljest obehörigen användas. Överträdelse härvid beivras med stöd av gällande lag. This document must not be copied, either completely or in part, without permission. Any infringement will have legal consequences.



A3



21	1	Washer	Steel, Zn 8 silver
20	1	Valve stop	Brass
19	1	Valve pin	Steel
18	1	Valve	Steel, Plated
17	1	Valve	Steel
16	1	Spring	Stainless steel
15	1	Spring	Stainless steel
14	1	Seal	TPU
13	1	Seal	PUR
12	1	Protection plug	LDPE
11	1	O-ring	NBR
10	1	O-ring	NBR
9	1	O-ring	NBR
8	1	O-ring	NBR
7	1	Nipple body	Hard. steel, Zn-Ni 9 transp
6	5	Locking hook	Hard.steel Fe/Zn 8 P1 T/N
5	1	Lock ring	Steel / FZB
4	1	Front part	Steel, Fe/Zn 8 P1 N
3	1	Flat seal	Plastic
2	1	Back-up ring	Hytrel
1	1	Back part	Steel, Zn-Ni 9 transp
Detalj Item	Antal Quant.	Benämning Description	Material Material

Product no: 10_364_6904

Max working pressure: 350 bar connected
350 bar disconnected
Min burst pressure: 1200 bar connected
1200 bar disconnected
Sealing material: NBR/PUR
Temperatur range: -30°C - +100 °C
Nominal flow diameter, DN: 10 mm
Connection: WEO 3/8"
Connection stroke: mm



Skala Scale	2:1	Ritad Drawn	JoEr	Kontr. Checked	-	Godk. Appr.	-	Äm nr. Alt. no.	-	Dat. Date	13-11-21	
Assembly drawing							Ritning nr./Drawing No.		50_364_6904		Utg./Issue	AA