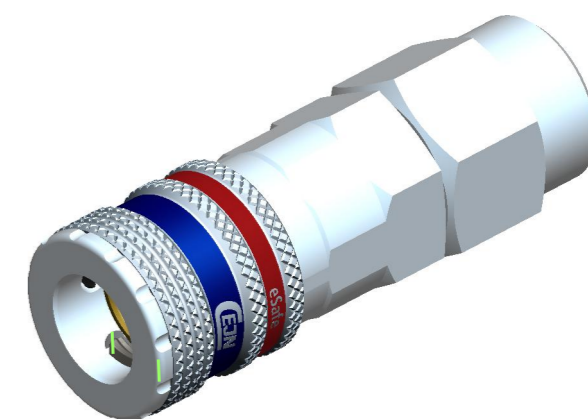
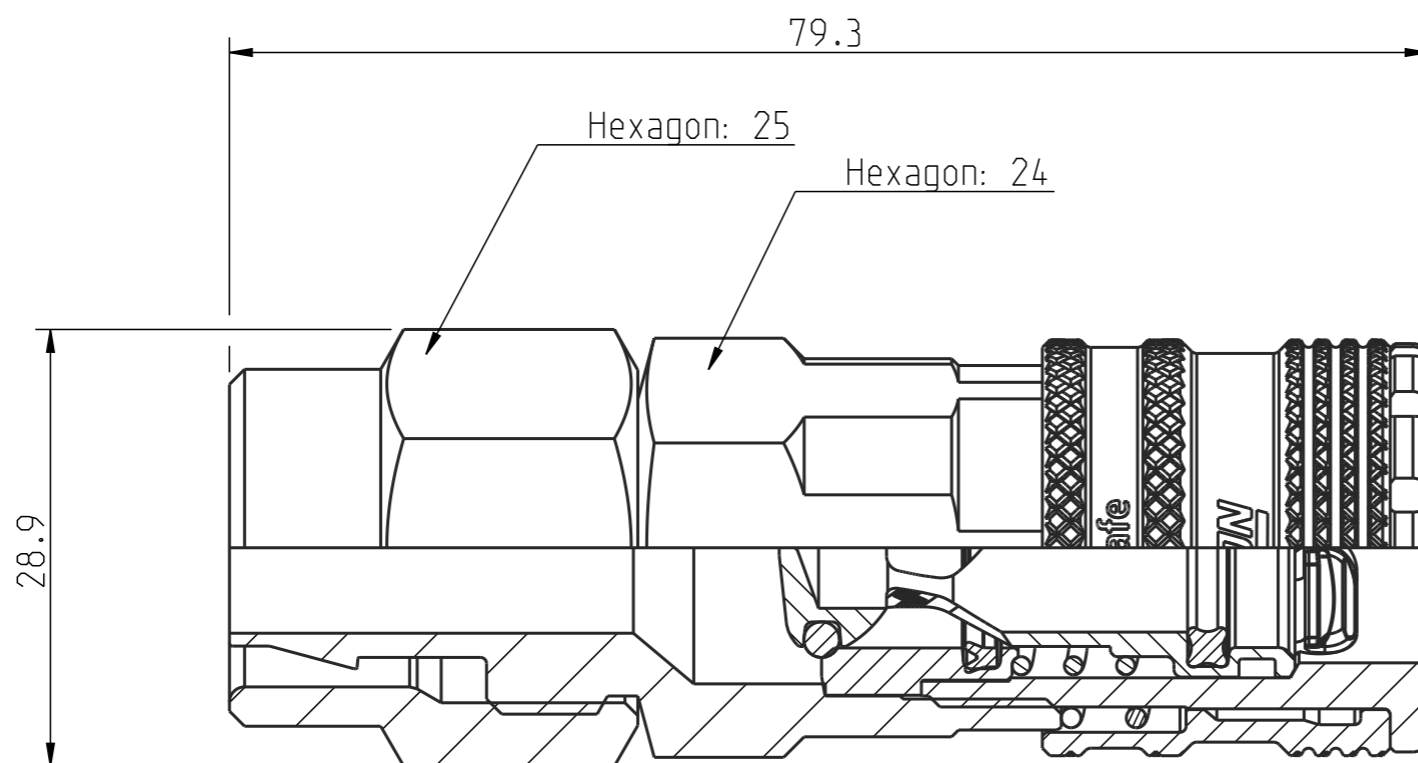
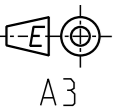
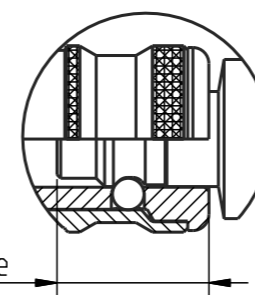


Diese Zeichnung darf weder ganz noch teilweise ohne unsere ausdrückliche Genehmigung kopiert oder auf andere Weise vervielfältigt werden. Alle Rechte vorbehalten.

Denna handling får ej utan vårt medgivande delges annan, kopieras eller eljest obehörigen användas. Övertryckelse härvid beivras med stöd av gällande lag. This document must not be copied, either completely or in part, without permission. Any infringement will have legal consequences.



1:1



Connection stroke

Product no: 10_410_2068

DN: 10,4 mm
 Connection stroke: 18,9 mm
 Max WP connected: 10 bar
 Min BP connected: 40 bar
 Temperature range: +100 °C - -20 °C
 Connection: Stream-Line 13x18
 Sealing material: NBR

12	1	Valve seat	Brass
11	1	Valve	Brass
10	1	Swivel nut	Steel, Zn 8 Silver
9	1	Spring	Stainless steel
8	1	Spring	Stainless steel
7	1	QUAD-Ring	NBR
6	1	O-ring	NBR
5	1	Locking sleeve	Hard. Steel, Zn 8 silver
4	1	Lip seal	NBR
3	3	Hook	Hard. Steel, Zn-Ni 8 transp.
2	1	Front part	Hard. Steel Zn 8 Silver
1	1	Back part	Brass, Zn 8 silver
Detalj Item	Antal Quant.	Benämning Description	Material Material

Skala Scale	2:1	Ritad Drawn	CABLHE	Kontr. Checked	Godk. Appr.	OG	Äm nr. Alt. no.	10580	Dat. Date	131210	
Assembly drawing						Ritning nr./Drawing No.		50_410_2068		Utg./Issue	AA