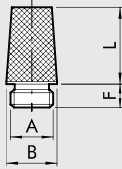
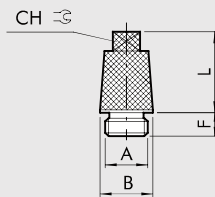


SCHALLDÄMPFER MW SC



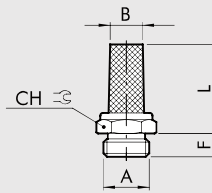
	Bestellnummer	A	B ±0.2	F	L ±3%
Werkstoffe:	W0970530001	M5	6	4.5 ±0.5	10
Vernickeltes Messing	W0970530002	G 1/8	12	6 ±0.5	15
Gsinterte vernickelte Bronze	W0970530003	G 1/4	15	6.7 ±0.5	19
	W0970530004	G 3/8	19	8.5 ±0.5	28.5
	W0970530005	G 1/2	23	8.7 ±0.5	33
Daten:	W0970530006	G 3/4	29	11 ±1	40.5
Pmax: 12 bar	W0970530007	G 1	36	11.5 ±1	50.5
Temp.: -10°C ÷ +80°C					

SCHALLDÄMPFER MW SCQ



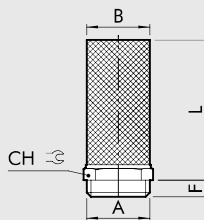
	Bestellnummer	A	B ±0.2	F	L ±3%	CH
Werkstoffe:	W0970530012	G 1/8	12	6 ±0.5	15	7
Vernickeltes Messing	W0970530013	G 1/4	15	7.5 ±0.5	19	8
Gsinterte vernickelte Bronze	W0970530014	G 3/8	19	8.5 ±0.5	29.2	10
	W0970530015	G 1/2	23	9 ±0.5	31.5	14
	W0970530016	G 3/4	29	10 ±1	41.5	17
Daten:	W0970530017	G 1	36	12 ±1	51.2	23
Pmax: 12 bar						
Temp.: -10°C ÷ +80°C						

SCHALLDÄMPFER MW SE



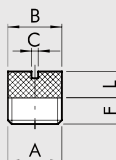
	Bestellnummer	A	B ±0.5	F	L ±5%	CH
Werkstoffe:	W0970530021	M5	4	4 ±0.5	13	8
Vernickeltes Messing	W0970530020	M7	5	5 ±0.5	21	10
Gsinterte vernickelte Bronze	W0970530022	G 1/8	7	6 ±0.5	21	13
	W0970530023	G 1/4	8.5	8 ±0.5	23.5	16
	W0970530024	G 3/8	11	8 ±0.5	33	19
Daten:	W0970530025	G 1/2	15	10 ±0.5	37	24
Pmax: 12 bar	W0970530026	G 3/4	21.5	10 ±1	43.5	30
Temp.: -10°C ÷ +80°C	W0970530027	G 1	27	11.5 ±1	56	36

HOCHLEISTUNGSSCHALLDÄMPFER MW SL



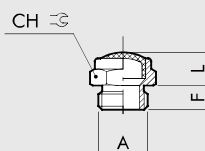
	Bestellnummer	A	B ±1	F	L ±5%	CH
Werkstoffe:	W0970530036	G 3/4	37	12 ±1	215	50
Vernickeltes Messing	W0970530037	G 1	37	12 ±1	215	50
Gsinterte vernickelte Bronze	W0970530038	G 1 1/4	37	15 ±1.5	215	50
	W0970530039	G 1 1/2	37	15 ±1.5	215	50
	W0970530040	G 2	37	17 ±1.5	220	65
Daten:						
Pmax: 12 bar						
Temp.: -10°C ÷ +80°C						

SCHALLDÄMPFER MW STT



	Bestellnummer	A	B ±0.2	F	L ±3%	C
Werkstoffe:	W0970530042	G 1/8	9.5	6.5 ±0.5	6	2
Vernickeltes Messing	W0970530043	G 1/4	12.6	6 ±0.5	7	1.5
Gsinterte vernickelte Bronze	W0970530044	G 3/8	16.2	7.5 ±0.5	8.5	1.5
	W0970530045	G 1/2	20.5	10 ±0.5	9.6	2.5
	W0970530046	G 3/4	26	11 ±1	12	1.5
Daten:	W0970530047	G 1	33	13 ±1	11	-
Pmax: 12 bar						
Temp.: -10°C ÷ +80°C						

SCHALLDÄMPFER MW SFE



	Bestellnummer	A	F	L ±3%	CH
Werkstoffe:	W0970530051	M5	3.7 ±0.5	4.7	8
Vernickeltes Messing	W0970530052	G 1/8	6.2 ±0.5	8.2	13
Edelstahl-Geflecht	W0970530053	G 1/4	7.7 ±0.5	11.3	16
	W0970530054	G 3/8	8 ±0.5	11.5	19
	W0970530055	G 1/2	10.3 ±0.5	13	24
Daten:	W0970530056	G 3/4	10 ±1	15	30
Pmax: 12 bar	W0970530057	G 1	12 ±1	18	36
Temp.: -10°C ÷ +80°C					