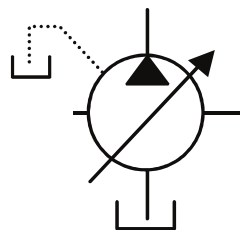


Characteristics

- Continuous Pressure – up to 350 bar
- Through shaft Capability
- Low Outlet Flow Pulsation
- 7 Standard Control Options



Feature

- Low noise levels
- Fast response
- Compact design
- Service friendly
- High self priming speed
- Through drive for 100% of nominal
- Modular controls

	PV016/020/023/028	PV032/040/046	PV063/080/092	PV140/180	PV270	PV360
Max. Displacement	16/20/23 cc/rev	32/40/46 cc/rev	63/80/92 cc/rev	140/180 cc/rev	270 cc/rev	360 cc/rev
Speed Rating:	3000 RPM	2800 RPM	2800/2500/ 2300 RPM	2400/2200 RPM	1800 RPM	1750 RPM
Cont. Outlet Press:	350 bar	350 bar	350 bar	350 bar	350 bar	350 bar
Min. Inlet Press.	0.8 bar	0.8 bar	0.8 bar	0.8 bar	0.8 bar	0.8 bar
Max. Inlet Press.	16 bar	16 bar	16 bar	16 bar	16 bar	16 bar
Input Power*:	15.5/19.5/ 22.5/ 27.5 kW	31/39/45 kW	6.1/78/7804 kW	138/175 kW	263 kW	350 kW

* 1500 RPM and 350 bar.

Model	Description	
PV016R1K1T1NMMC	16cc/rev, RH press. Comp. Keyed shaft metric flang	Can be Converted from PV028
PV020R1K1T1NMMC	20cc/rev, RH press. Comp. Keyed shaft metric flang	Can be Converted from PV028
PV023R1K1T1NMMC	23cc/rev, RH press. Comp. Keyed shaft metric flang	Can be Converted from PV028
PV028R1K1T1NMMC	28cc/rev, RH press. Comp. Keyed shaft metric flang	
PV032R1K1T1NMMC	32cc/rev, RH press. Comp. Keyed shaft metric flang	Can be Converted from PV046
PV040R1K1T1NMMC	40cc/rev, RH press. Comp. Keyed shaft metric flang	Can be Converted from PV046
PV046R1K1T1NMMC	46cc/rev, RH press. Comp. Keyed shaft metric flang	
PV063R1K1T1NMMC	63cc/rev, RH press. Comp. Keyed shaft metric flang	Can be Converted from PV092
PV080R1K1T1NMMC	80cc/rev, RH press. Comp. Keyed shaft metric flang	Can be Converted from PV092
PV092R1K1T1NMMC	92cc/rev, RH press. Comp. Keyed shaft metric flang	
PV140R1K1T1NMMC	140cc/rev, RH press. Comp. Keyed shaft metric flang	Can be Converted from PV180
PV180R1K1T1NMMC	180cc/rev, RH press. Comp. Keyed shaft metric flang	
PV270R1K1T1NMMC	270cc/rev, RH press. Comp. Keyed shaft metric flang	

Piston Pump Options

Description	Through Drive Kit*	Coupling*
PV016-028 to SAE A Pilot & Coupling 9T	MK-PVBG1AMN42	MK-PVBG1K1142
PV016-028 to SAE B Pilot & Coupling 13T	MK-PVBG1BMN42	MK-PVBG1K1342
PV016-028 to PV016-28	MK-PVBG1JMN42	MK-PVBG1K0142
PV032-046 to SAE A Pilot & Coupling 9T	MK-PVBG2AMN40	MK-PVBG2K1140
PV032-046 to SAE B Pilot & Coupling 13T	MK-PVBG2BMN42	MK-PVBG2K1340
PV032-046 to PV016-028	MK-PVBG2JMN40	MK-PVBG2K0140
PV032-046 to PV032-046	MK-PVBG2KMN40	MK-PVBG2K0240
PV063-092 to SAE A Pilot & Coupling 9T	MK-PVBG3AMN41	MK-PVBG3K1141
PV063-092 to SAE B Pilot & Coupling 13T	MK-PVBG3BMN41	MK-PVBG3K1341
PV063-092 to SAE C Pilot & Coupling 14T	MK-PVBG3CMN41	MK-PVBG3K1541
PV063-092 to PV016-023	MK-PVBG3JMN41	MK-PVBG3K0141
PV063-092 to PV032-046	MK-PVBG3KMN41	MK-PVBG3K0241
PV063-092 to PV063-092	MK-PVBG3LMN41	MK-PVBG3K0341
PV140-180 to SAE A Pilot & Coupling 9T	MK-PVBG4AMN40	MK-PVBG4K1140
PV140-180 to SAE B Pilot & Coupling 13T	MK-PVBG4BMN40	MK-PVBG4K1340
PV140-180 to SAE C Pilot & Coupling 14T	MK-PVBG4CMN40	MK-PVBG4K1540
PV140-180 TO PV016-028	MK-PVBG4JMN40	MK-PVBG4K0140
PV140-180 TO PV032-046	MK-PVBG4KMN40	MK-PVBG4K0240
PV140-180 TO PV063-092	MK-PVBG4LMN40	MK-PVBG4K0340
PV140-180 TO PV140-180	MK-PVBG4LMN40	MK-PVBG4K0440
PV270 to PV032-046	MK-PVBG5KMN40	MK-PVBG5K0240
PV270 to PV063-092	MK-PVBG5LMN40	MK-PVBG5K0340
PV270 to PV140-180	MK-PVBG5LMN40	MK-PVBG5K0440
PV270 to PV270	MK-PVBG5MMN40	MK-PVBG5K0540

Compensator Options* Series 45 and up only

	PV016-046	PV063-092	PV140-360
Pressure Compensated – MMC	PVCMAMCN1	PVCMCMCN1	PVCMEMCN1
Pressure & Flow Comp. – MFC	PVCMAFCN1	PVCMCFCN1	PVCMFCFN1
Pressure & Flow Comp. c/w Top Interface NG6/D03 – MF1	PVCMAF1N1	PVCMCF1N1	PVCMFC1N1
Remote Press Comp. – MRC	PVCMARCN1	PVCMCRCN1	PVCMERCN1
Remote Press Comp. cc/w Top Interface NG6/D03 – MR1	PVCMAR1N1	PVCMCR1N1	PVCMER1N1

* More Compensator Options Available on Request. Contact Parker.

PV Plus Piston Pump Spares

Seal Kits A

	PV016-023	PV032-046	PV063-092	PV140-180	PV270
Seal Kit Buna N	SK-PVBG1N145	SK-PVBG2N145	SK-PVBG3N143	SK-PVBG4N144	SK-PVBG5N146
Seal Kit Viton	SK-PVBG1V145	SK-PVBG2V145	SK-PVBG2V143	SK-PVBG4V144	SK-PVBG5V146