

**Characteristics / Ordering Code**

**Series ZDV**

Pilot operated pressure relief valves series ZDV are designed for maximum flow rates.

The relief function can be located between P and T, A and T, B and T or A and T + B and T for typical pressure relief functions.

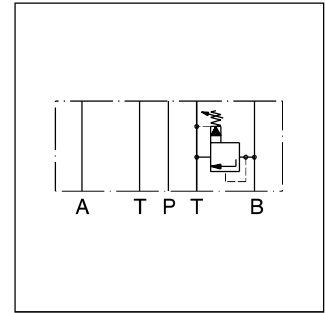
For a pre-charge function the ZDV can be ordered with pressure function between A and B + B and A.

**Features**

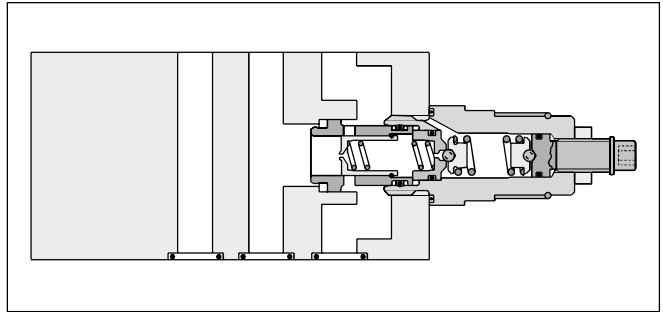
- High flow capacity
- Pressure function in P, A, B or A + B
- Sizes  
 ZDV01 - NG06 (CETOP 03)  
 ZDV02 - NG10 (CETOP 05)



ZDV-P01



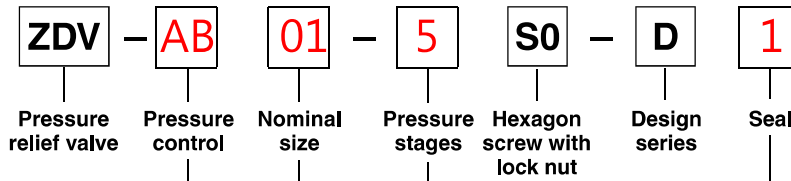
ZDV-B02



ZDV-B02

**Ordering code**

7



Code	Size	Pressure control
P	NG06/10	P - T
A	NG06/10	A - T
B	NG06/10	B - T
<b>AB</b>	<b>NG06/10</b>	<b>A - T &amp; B - T</b>
ABS	NG06/10	A - B & B - A

Code	Nominal size
<b>01</b>	<b>NG06</b>
02	NG10

Code	Seal
<b>1</b>	<b>NBR</b>
5	FPM

Code	Pressure stages
1	up to 70 bar
<b>5<sup>1)</sup></b>	<b>up to 350 bar</b>

Ordering code details see end of chapter.

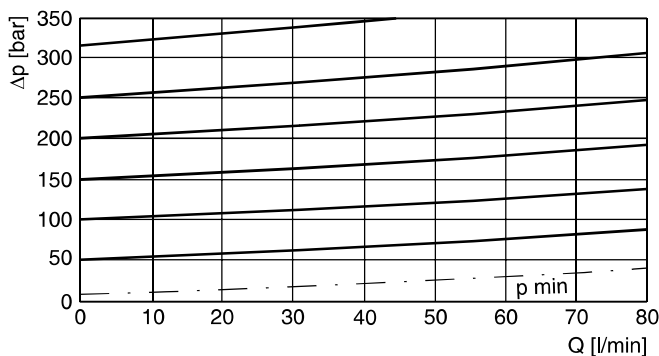
<sup>1)</sup> Code ABS and size 10 up to 315 bar.

**Technical data**

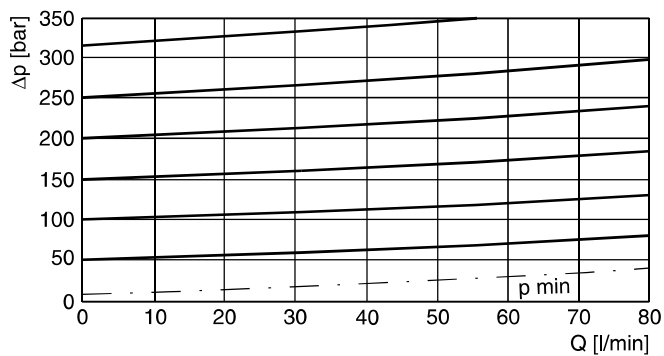
General			
Size		<b>NG06</b>	<b>NG10</b>
Mounting interface		DIN 24340 A6 ISO 4401 NFPA D03	DIN 24340 A10 ISO 4401 NFPA D05
		CETOP RP 121	
Mounting position		unrestricted	
Ambient temperature	[°C]	-20...+60	
MTTF <sub>D</sub> value	[years]	150	
Weight	1 cartridge [kg]	1.6	3.0
	2 cartridges [kg]	2.5	3.7
Hydraulic			
Max. operating pressure	[bar]	350 (ZDV-ABS 315)	315
Nominal flow	[l/min]	80	140
Fluid		Hydraulic oil according to DIN 51524	
Fluid temperature	[°C]	-20...+70 (NBR: -25...+70)	
Viscosity	permitted [cSt] / [mm <sup>2</sup> /s]	20 ... 400	
	recommended [cSt] / [mm <sup>2</sup> /s]	30 ... 80	
Filtration		ISO 4406 (1999); 18/16/13	

**p/Q performance curves**

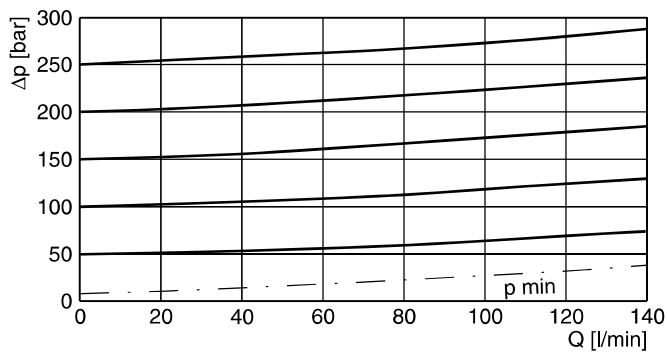
**ZDV-P/A/B/ABS01**



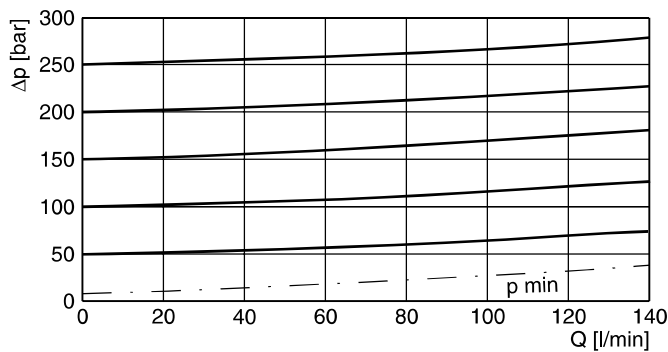
**ZDV-AB01**



**ZDV-P/A/B/AB02**



**ZDV-ABS02**

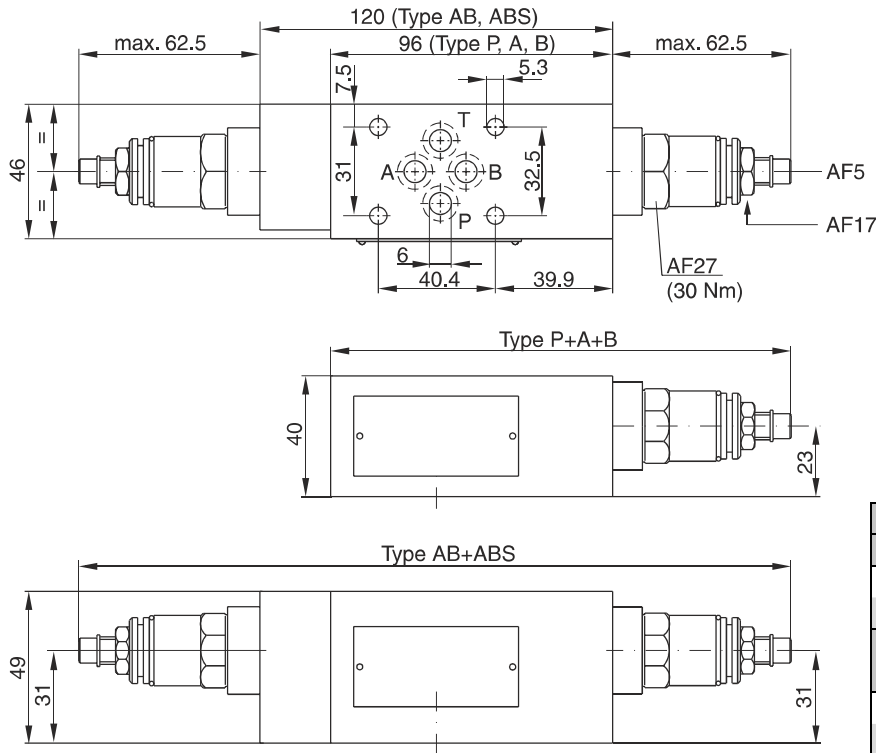


All characteristic curves measured with HLP46 at 50 °C.

ZDV UK.indd 25.04.19

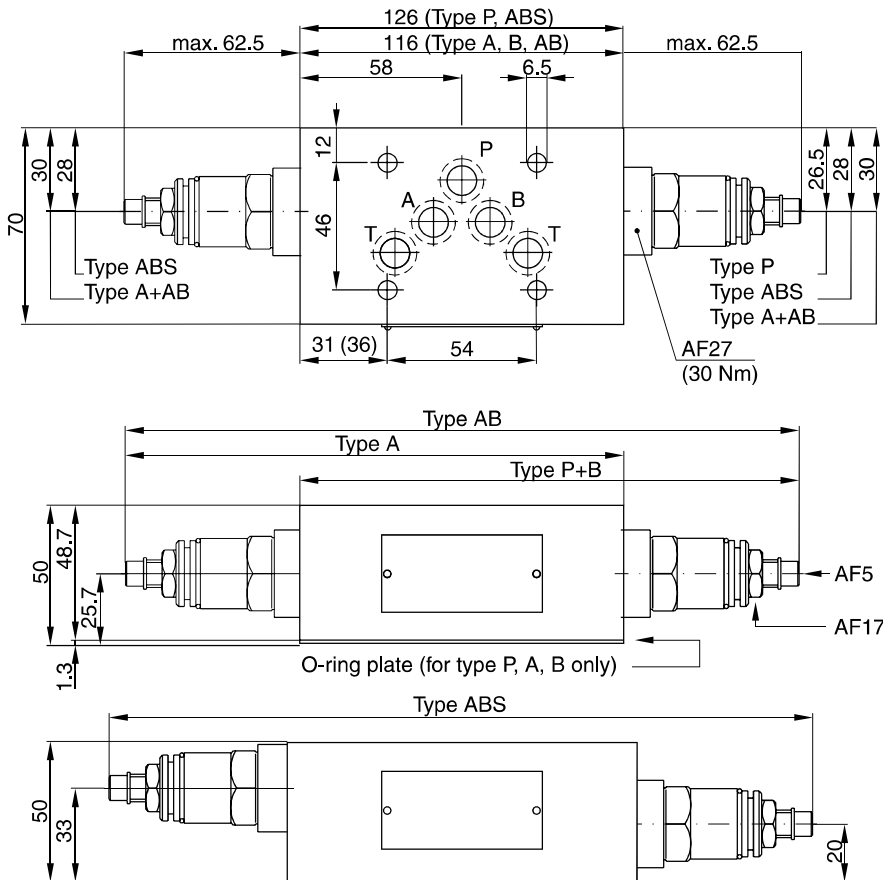
Dimensions

ZDV01



Seal kit	
Seal	Order code
1	098-91182-0
5	098-91183-0
Complete cartridge	
Pressure stage	Order code
1	098-91116-0
5	098-91117-0

7 ZDV02

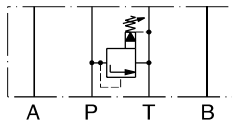


Seal kit	
Seal	Order code
1	098-91076-0
5	098-91077-0
Complete cartridge	
Pressure stage	Order code
1	098-91116-0
5	098-91117-0



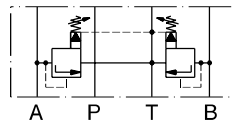
**ZDV01**

Pressure control P-T



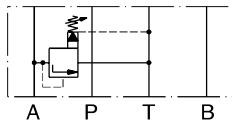
Series  
 ZDV-P01-1-S0-D1  
 ZDV-P01-5-S0-D1  
 Order No.  
 098-91201-0  
 098-91202-0

Pressure control A-T & B-T



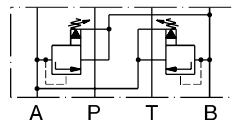
Series  
 ZDV-AB01-1-S0-D1  
 ZDV-AB01-5-S0-D1  
 Order No.  
 098-91207-0  
 098-91208-0 <---

Pressure control A-T



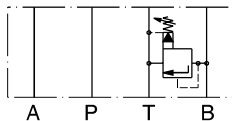
Series  
 ZDV-A01-1-S0-D1  
 ZDV-A01-5-S0-D1  
 Order No.  
 098-91203-0  
 098-91204-0

Pressure control A-B & B-A



Series  
 ZDV-ABS01-1-S0-D1  
 ZDV-ABS01-5-S0-D1  
 Order No.  
 098-91209-0  
 098-91210-0

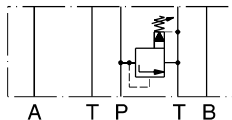
Pressure control B-T



Series  
 ZDV-B01-1-S0-D1  
 ZDV-B01-5-S0-D1  
 Order No.  
 098-91205-0  
 098-91206-0

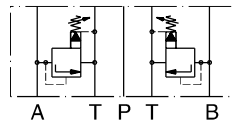
**ZDV02**

Pressure control P-T



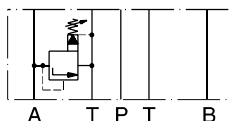
Series  
 ZDV-P02-1-S0-D1  
 ZDV-P02-5-S0-D1  
 Order No.  
 098-91034-0  
 098-91035-0

Pressure control A-T & B-T



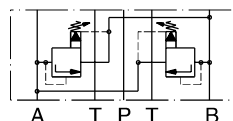
Series  
 ZDV-AB02-1-S0-D1  
 ZDV-AB02-5-S0-D1  
 Order No.  
 098-91040-0  
 098-91041-0

Pressure control A-T



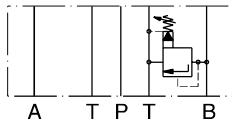
Series  
 ZDV-A02-1-S0-D1  
 ZDV-A02-5-S0-D1  
 Order No.  
 098-91036-0  
 098-91037-0

Pressure control A-B & B-A



Series  
 ZDV-ABS02-1-S0-D1  
 ZDV-ABS02-5-S0-D1  
 Order No.  
 098-91042-0  
 098-91043-0

Pressure control B-T



Series  
 ZDV-B02-1-S0-D1  
 ZDV-B02-5-S0-D1  
 Order No.  
 098-91038-0  
 098-91039-0

