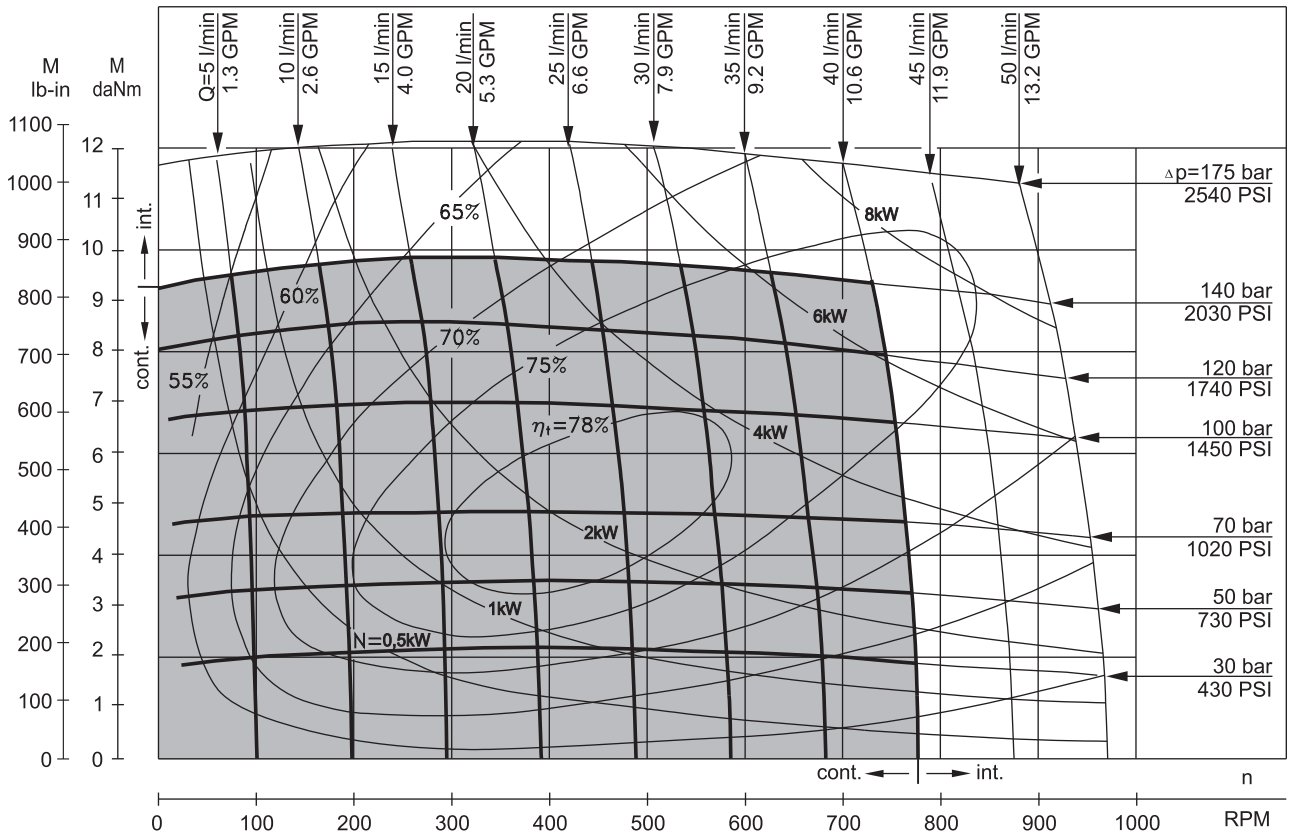
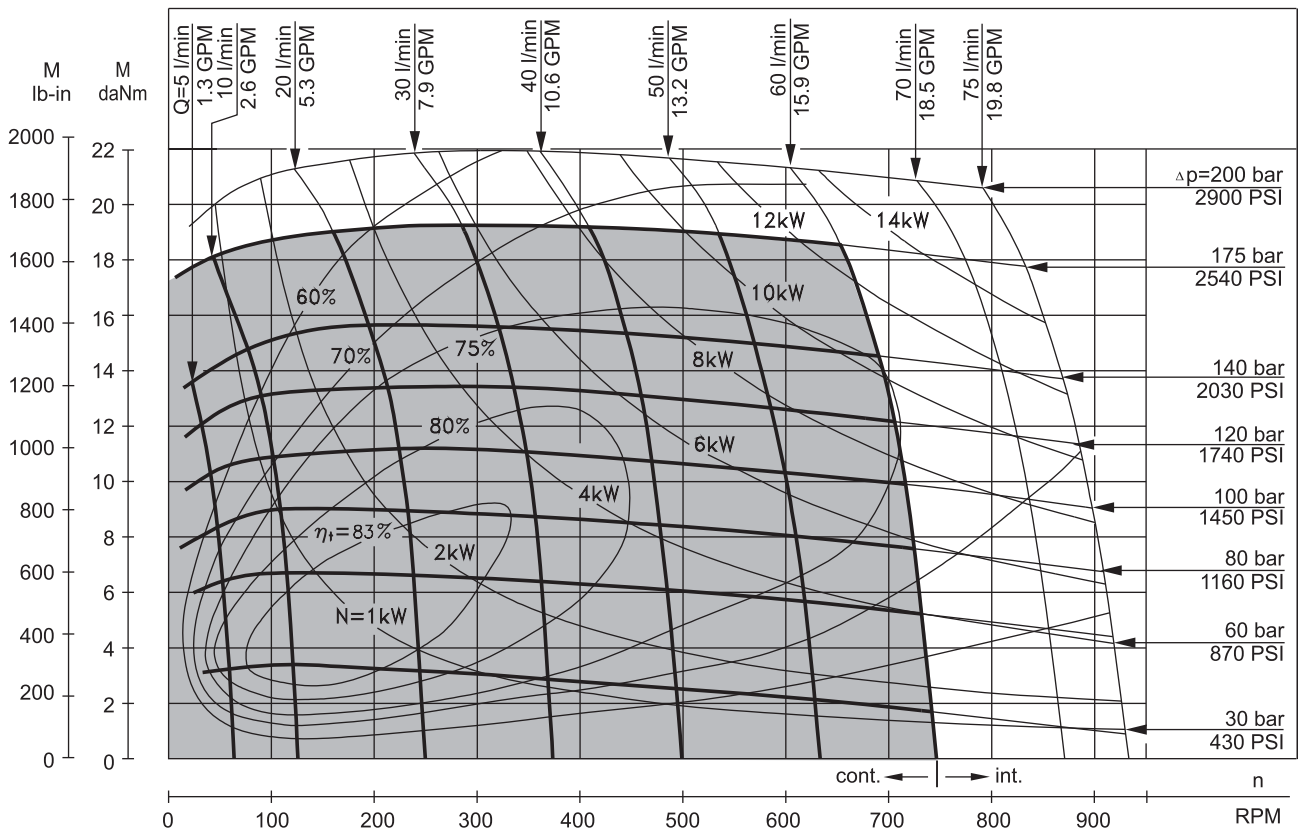


FUNCTION DIAGRAMS

RW 50



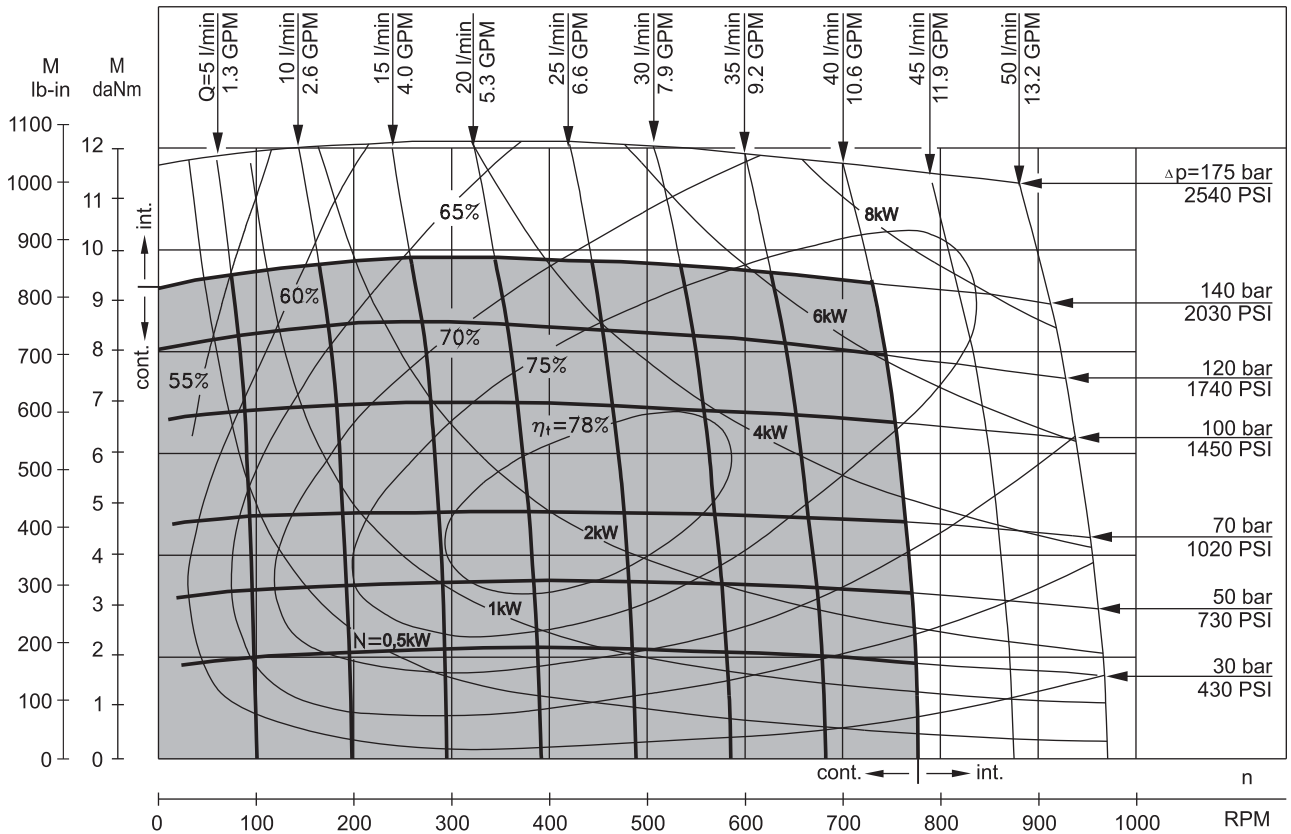
RW 80



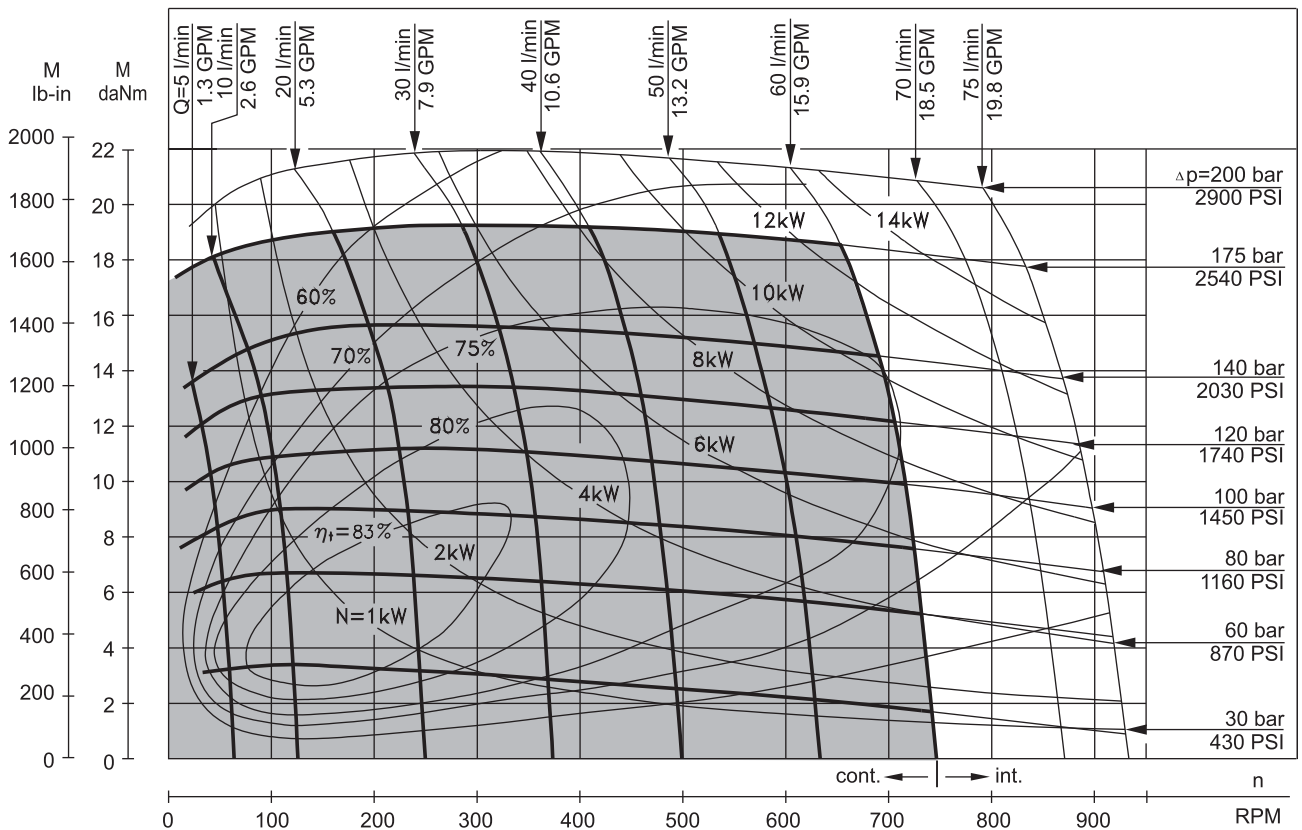
The function diagrams data is for average performance of randomly selected motors at back pressure 5÷10 bar [72.5÷145 PSI] and oil with viscosity of 32 mm²/s [150 SUS] at 50°C [122°F].

FUNCTION DIAGRAMS

RW 50

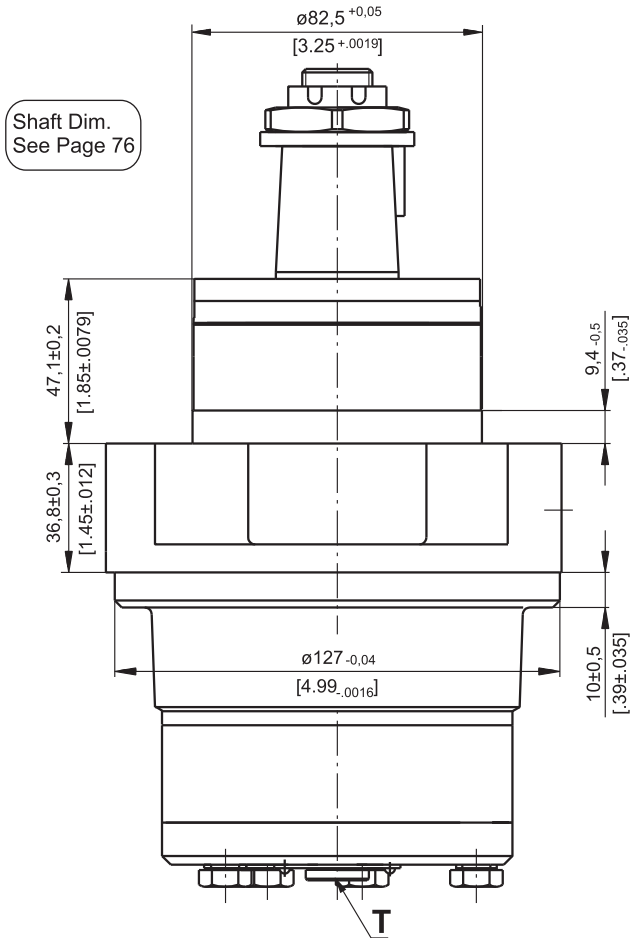
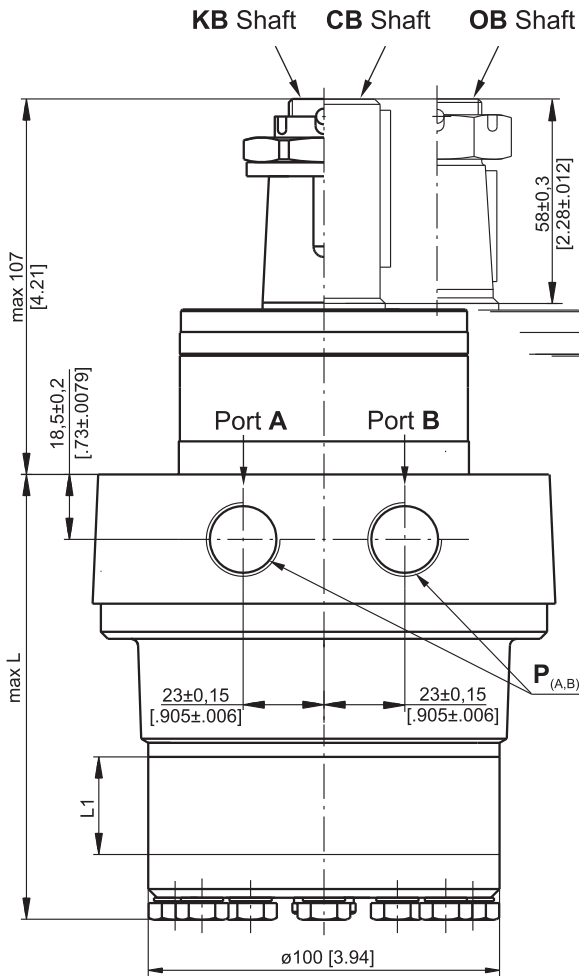


RW 80

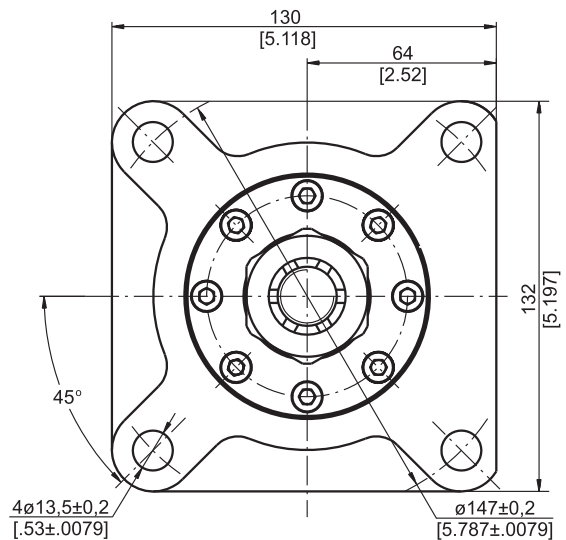


The function diagrams data is for average performance of randomly selected motors at back pressure 5÷10 bar [72.5÷145 PSI] and oil with viscosity of 32 mm²/s [150 SUS] at 50°C [122°F].

DIMENSIONS AND MOUNTING DATA



| Type | L, mm [in] | L1, mm [in] |
|--------|--------------|-------------|
| RW 50 | 108,0 [4.25] | 9,0 [.35] |
| RW 80 | 113,0 [4.45] | 14,0 [.55] |
| RW 100 | 116,5 [4.59] | 17,4 [.69] |
| RW 125 | 120,5 [4.74] | 21,8 [.86] |
| RW 160 | 126,5 [4.98] | 27,8 [1.09] |
| RW 200 | 133,5 [5.26] | 34,8 [1.37] |
| RW 250 | 142,5 [5.61] | 43,5 [1.71] |
| RW 315 | 153,5 [6.04] | 54,8 [2.16] |
| RW 400 | 168,5 [6.63] | 69,4 [2.73] |



P_(A,B): 2xG1/2 or 2xM22x1,5 - 17 mm [.67 in.] depth
 T : G1/4 or M14x1,5 - 12 mm [.47 in.] depth (plugged)

Standard Rotation
 Viewed from Shaft End
 Port A Pressurized - CW
 Port B Pressurized - CCW

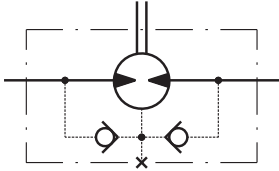
Reverse Rotation
 Viewed from Shaft End
 Port A Pressurized - CCW
 Port B Pressurized - CW



MAX. PERMISSIBLE SHAFT SEAL PRESSURE

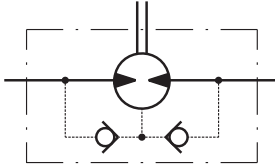
RW...; RW...UK motors with drain connection:

The shaft seal pressure equals the pressure in the drain line.



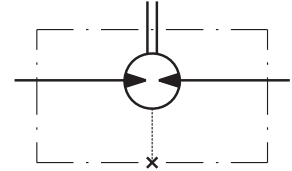
RW...1 motors without drain connection:

The shaft seal pressure never exceeds the pressure in the return line.

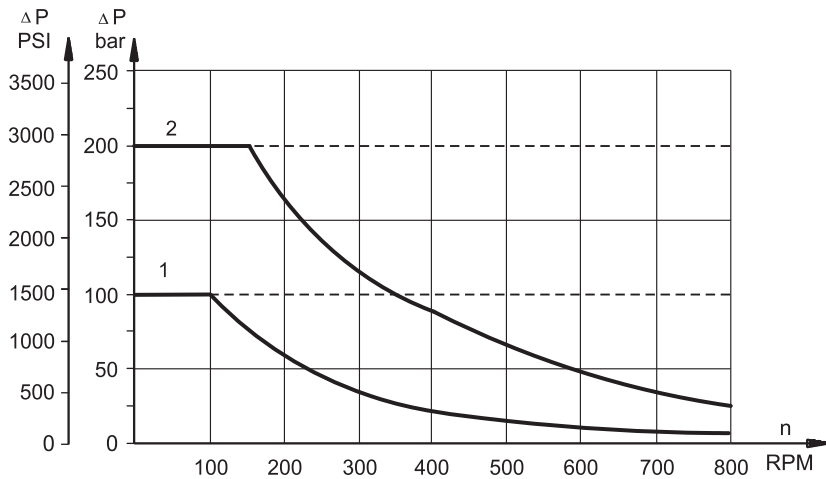


RW...U motors with high pressure seal and drain connection:

The shaft seal pressure equals the pressure in the drain line.



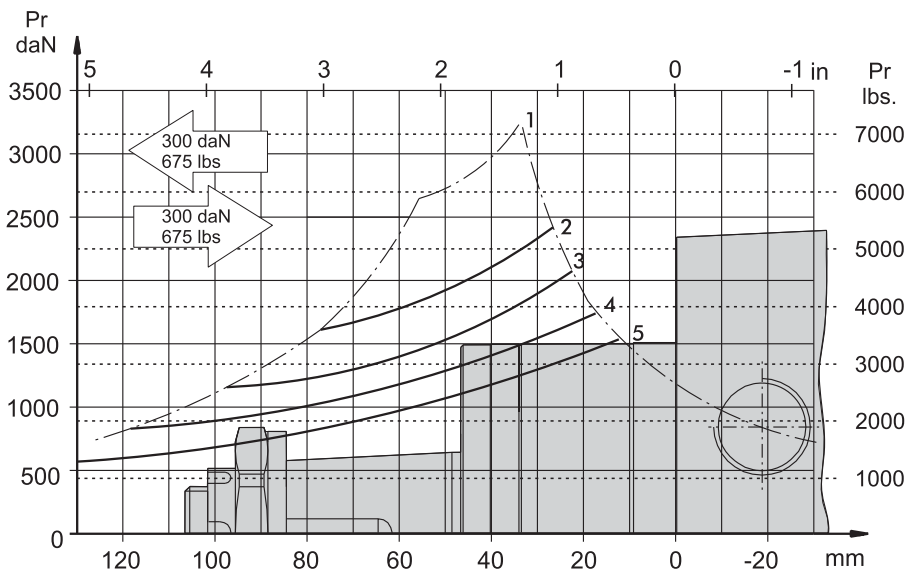
Max. return pressure without drain line or max. pressure in the drain line



- 1: Drawing for Standard Shaft Seal
- 2: Drawing for High Pressure Seal ("U" Seal)
- - continuous operations
- - - - intermittent operations

PERMISSIBLE SHAFT LOADS

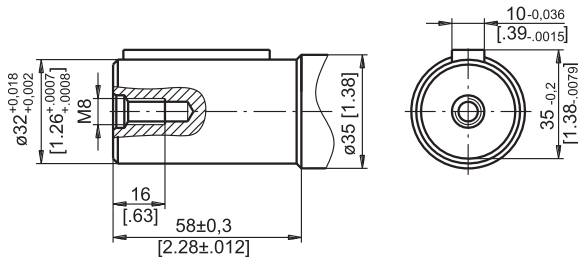
The curve applies to a B10 bearing life of 2000 hours.



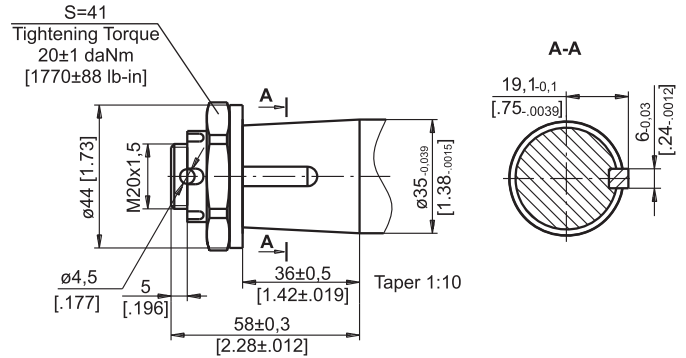
- 1. Permissible radial shaft load
- 2. Drawing by n= 50 rpm
- 3. Drawing by n=100 rpm
- 4. Drawing by n=200 rpm
- 5. Drawing by n=400 rpm

SHAFT EXTENSIONS

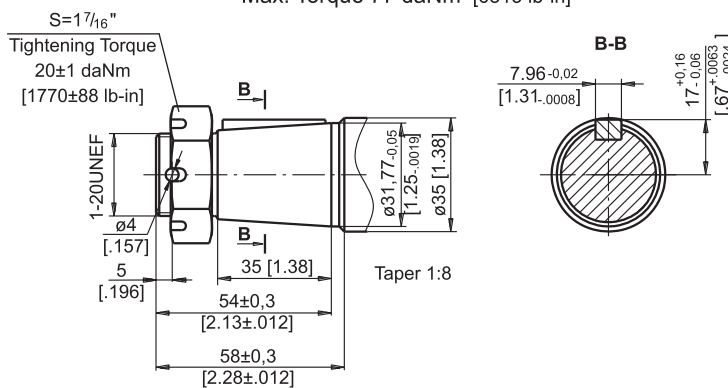
CB - $\varnothing 32$ straight, Parallel key A10x8x45 DIN 6885
Max. Torque 77 daNm [6815 lb-in]



KB - tapered 1:10, Parallel key B6x6x20 DIN 6885
Max. Torque 77 daNm [6815 lb-in]



OB - tapered 1:8 SAEJ 501, Parallel key $\frac{5}{16}$ "x $\frac{5}{16}$ "x $\frac{1}{4}$ " BS46
Max. Torque 77 daNm [6815 lb-in]



ORDER CODE

| | | | | | | | |
|-----------|---|---|---|---|---|---|---|
| | 1 | 2 | 3 | 4 | 5 | 6 | 7 |
| RW | | | | | | | |

Pos.1 - Displacement code

| | |
|------------|---|
| 50 | - 51,5 cm ³ /rev [3.14 in ³ /rev] |
| 80 | - 80,3 cm ³ /rev [4.90 in ³ /rev] |
| 100 | - 99,8 cm ³ /rev [6.09 in ³ /rev] |
| 125 | - 125,7 cm ³ /rev [7.67 in ³ /rev] |
| 160 | - 159,6 cm ³ /rev [9.74 in ³ /rev] |
| 200 | - 199,8 cm ³ /rev [12.19 in ³ /rev] |
| 250 | - 250,1 cm ³ /rev [15.26 in ³ /rev] |
| 315 | - 315,7 cm ³ /rev [19.26 in ³ /rev] |
| 400 | - 397,0 cm ³ /rev [24.40 in ³ /rev] |

Pos.2 - Shaft Extensions*

| | |
|-----------|---|
| CB | - $\varnothing 32$ straight, Parallel key A10x8x45 DIN6885 |
| KB | - $\varnothing 35$ tapered 1:10, Parallel key B6x6x20 DIN6888 |
| OB | - $\varnothing 1\frac{1}{4}$ " tapered 1:8, Parallel key $\frac{5}{16}$ "x $\frac{5}{16}$ "x $\frac{1}{4}$ " BS46 |

Pos.3 - Shaft Seal Pressure

| | |
|-----------|---|
| omit | - Standard shaft seal |
| U | - High pressure shaft seal without check valves |
| UK | - High pressure shaft seal with check valve |

Pos.4 - Drain Port

| | |
|----------|----------------------|
| omit | - with drain port |
| 1 | - without drain port |

Pos.5 - Ports

| | |
|----------|--------------------|
| omit | - BSPP (ISO 228) |
| M | - Metric (ISO 262) |

Pos.6 - Special Features (see page 99)

Pos.7 - Design Series

| | |
|------|---------------------|
| omit | - Factory specified |
|------|---------------------|

NOTE:

* The permissible output torque for shafts must not be exceeded!

The hydraulic motors are manganophosphated as standard.