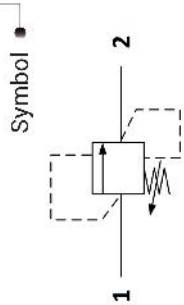


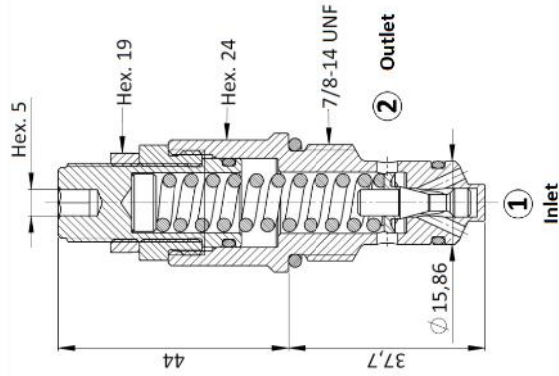
Relief Valves

RVC0.S10 Valve Series

- SAE10 Cartridge - 350 bar
- Direct acting - Poppet type



Cross Section



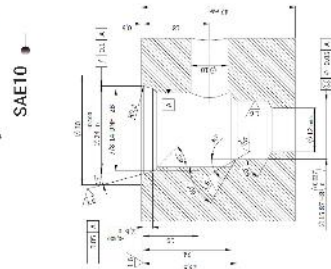
Description

A screw-in, cartridge style, direct acting, poppet type, normally closed hydraulic relief valve. It's typically used to protect hydraulic components from pressure transients. When the pressure at the inlet (1) reaches the valve setting, the valve starts to open to tank (?) throttling flow to minimize the pressure rise. The innovative geometry of the deflector provides in fact a very low rise rate, and the poppet design guarantees great stability. The cartridge offers quick response to load changes in hydraulic circuits requiring low internal leakage as well as limited hysteresis. NOTE: the RVC0 in the standard configuration can be used in crossover relief applications.

Technical Features

All external surfaces are zinc plated and corrosion-proof. All valve parts are made of high strength steel. Poppet is hardened and ground to guarantee minimal wear and to extend service life. Adjustment screw cannot be backed out of the valve. Positive stop prevents springs from going solid. Optional spring ranges to 350 bar (5000 psi). Industry common cavity.

Cavity Details

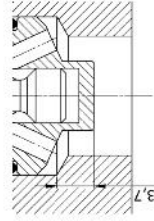


Technical Data

Maximum operating pressure	350 bar
Maximum flow	50 /min
Setting Pressure	See table below
Maximum internal leakage	0,25 cm ³ /min to 80% of nominal set point
External component treatment	Zn-Fc - standard (306°) Zn-Ni (720h)
O-ring Temperature Range	-30° C to 110° C (standard sealing NBR - Buna-N)
Oil Temperature Range	-30° C to 110° C
Pressure settings established @:	l/min
Reset pressure	nominal 30% of cracking pressure
Fluids	Mineral - based or synthetics with Lubricating properties
Viscosities	7.4 to 420 cSt
Filtration	20/78/16 ISO 4406 (=maximum filtration admitted)
Orientation	No restrictions
Installation torque	55-55 Nm (Hex. 24)
Tightening torque nut	25-30 Nm (Hex. 19)
Technical specifications for characterization	See page 430
Oil testing condition	ISO VG 76 cSt
Seal kit code	SK001
Plastic tamper proof cap	CTP001 (for more details see page 428-429)
Weight	0,170 kg

Design Note

- The nose of the valve protrudes by 0,7 mm into ID 12 mm of the cavity.



Ordering Code

RVC0 • **S10** • **0** • **AG** • **+200** • **-1-6-5**

Valve basic code
 RVC0 = 7/8 - 14 UNF with \varnothing 15,86 nose size

Cavity
 S10 = standard factory marking. Customized marking can be done upon request

Marking
 0 = standard factory marking. Customized marking can be done upon request

Spring range
 000 = No specific setting required

Pressure setting in [bar]
 200 = No specific setting required

Spring model code	Pressure setting range (bar)	Pressure increment per turn (bar)
Y	15-60	8
N	25-195	20
B	50-220	33
G	120-350	58

Eingestellt auf 165-bar bei 1 l/min

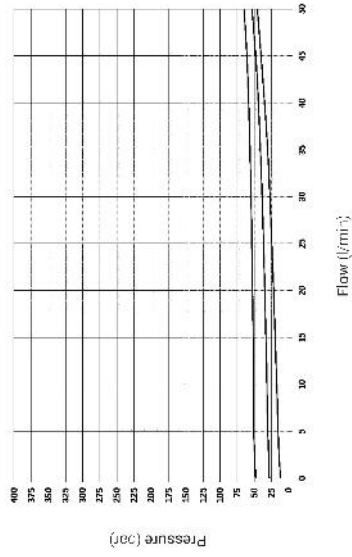
Relief Valves

● RVC0.S10 Valve Series

● Springs' Graphs → Note: The performance chart illustrates flow handling capacity for each spring bias option. p/Q curves are recorded at T01 = 40°C and 45 cSt

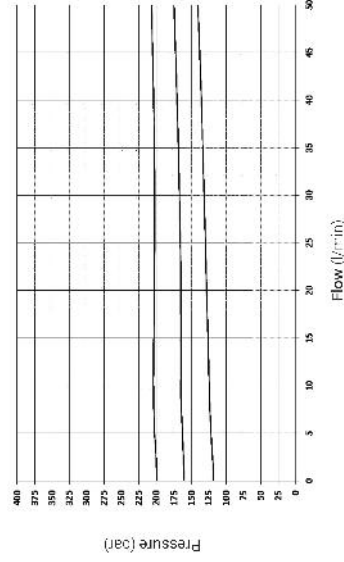
- Spring = Y (15 - 60bar)

p/Q performance



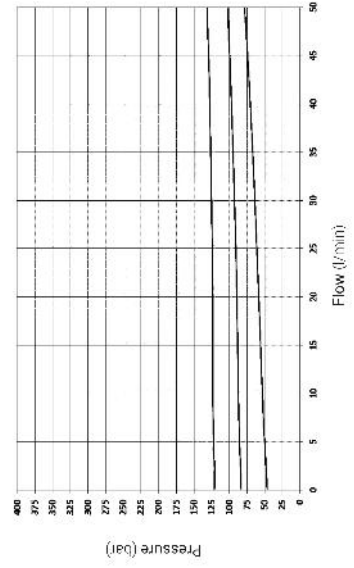
- Spring = B (50 - 220bar)

p/Q performance



- Spring = N (25 - 135bar)

p/Q performance



- Spring = G (120 - 350bar)

p/Q performance

