

General Description

The RDH082 Series, Direct Acting, Poppet-Type Relief Valves are best suited for intermittent duty applications and offer stable performance and fast response in an economical package.

Operation

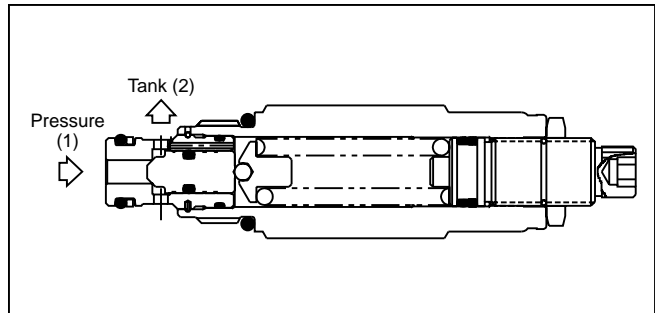
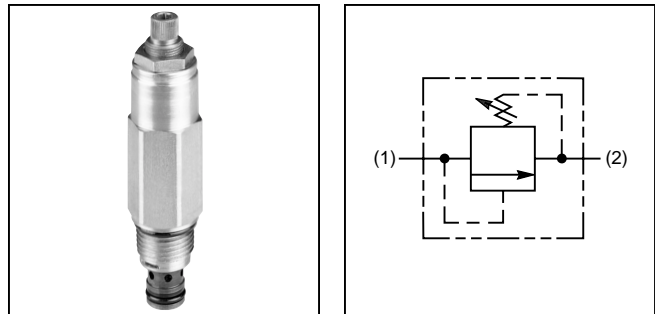
The valve poppet is held against the seat by spring force. Inlet pressure on the poppet acts against the spring force unseating the poppet when valve setting is reached, permitting relief flow to tank.

Features

- Hardened, precision ground parts for durability
- Fast response
- Low leakage design
- High flow capacity
- Adjustment design prohibits spring from going solid
- All external parts have yellow zinc dichromate. This coating allows them to withstand a 200 hour salt spray test.

Specifications

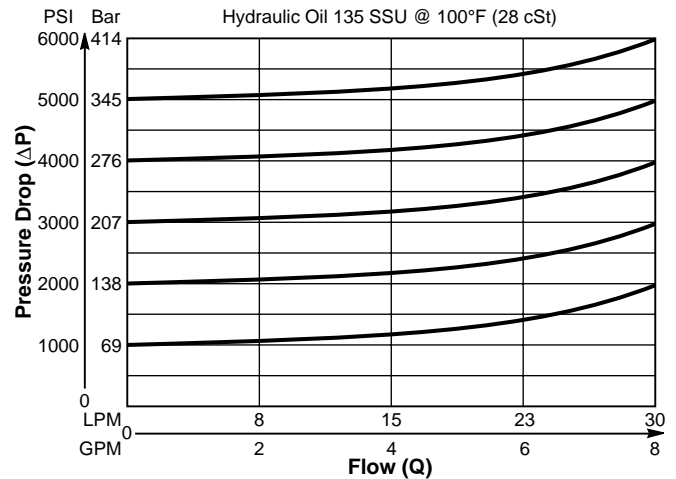
Maximum Flow	30 LPM (8 GPM)
Maximum Inlet Pressure	380 Bar (5500 PSI) - Steel 210 Bar (3000 PSI) - Aluminum
Maximum Setting Pressure	345 Bar (5000 PSI) - Steel 210 Bar (3000 PSI) - Aluminum
Reseat Pressure	75% of crack pressure
Leakage	1.3 cc/min. (40 drops/min.) at 75% of crack pressure
Operating Temp. Range (Ambient)	-40°C to +93.3°C (Nitrile) (-40°F to +200°F) -31.7°C to +121.1°C (Fluorocarbon) (-25°F to +250°F)
Cartridge Material	All parts steel. All operating parts hardened steel.
Body Material	Steel or Aluminum
Filtration	ISO Code 16/13, SAE Class 4 or better
Mounting	No restrictions
Cavity	Common Cavity No. C08-2



Performance Curve

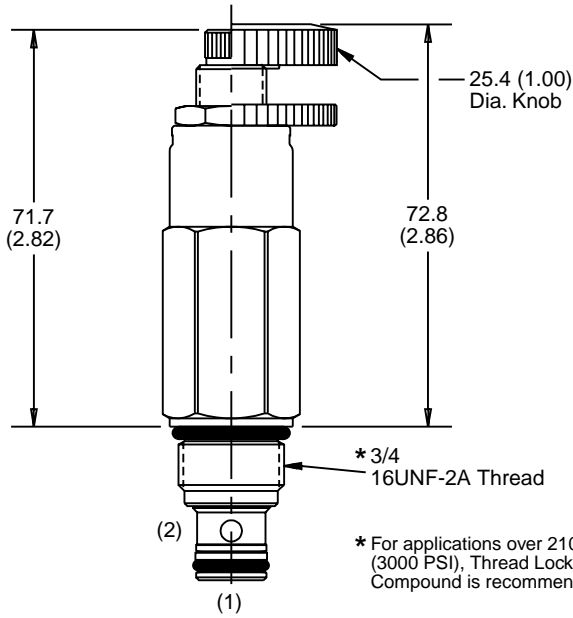
Flow vs. Inlet Pressure

(Pressure rise through cartridge only)

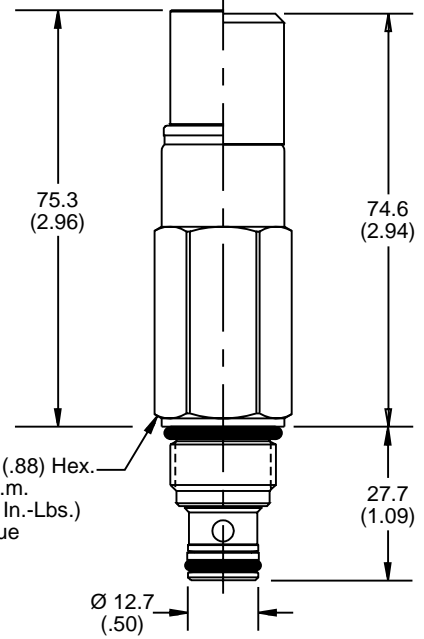


*Inch equivalents for millimeter dimensions are shown in (**)

Cartridge Only

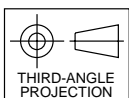
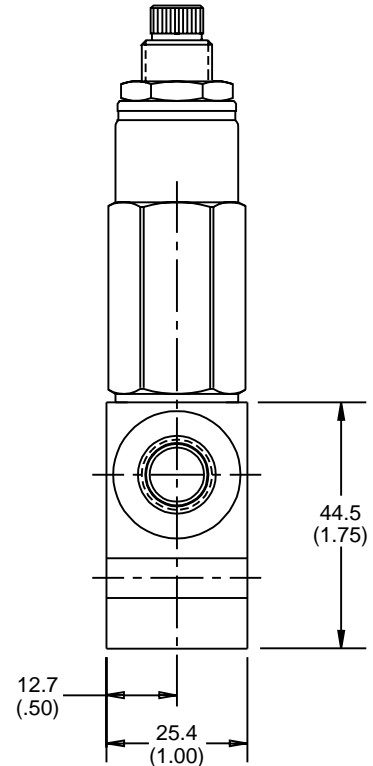
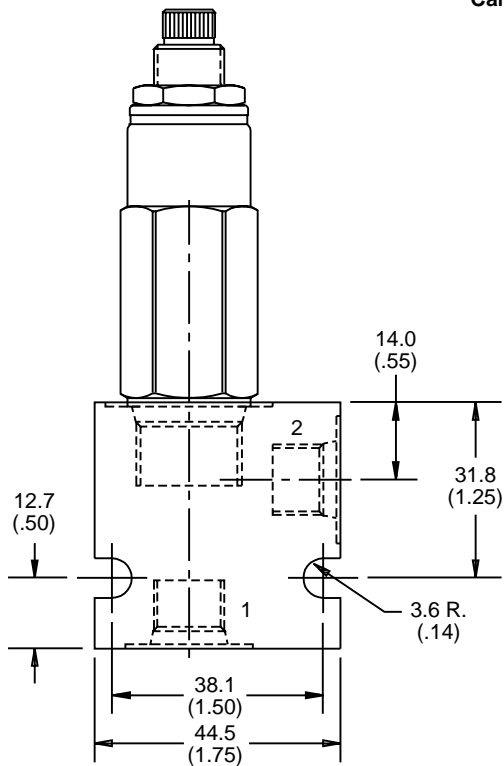


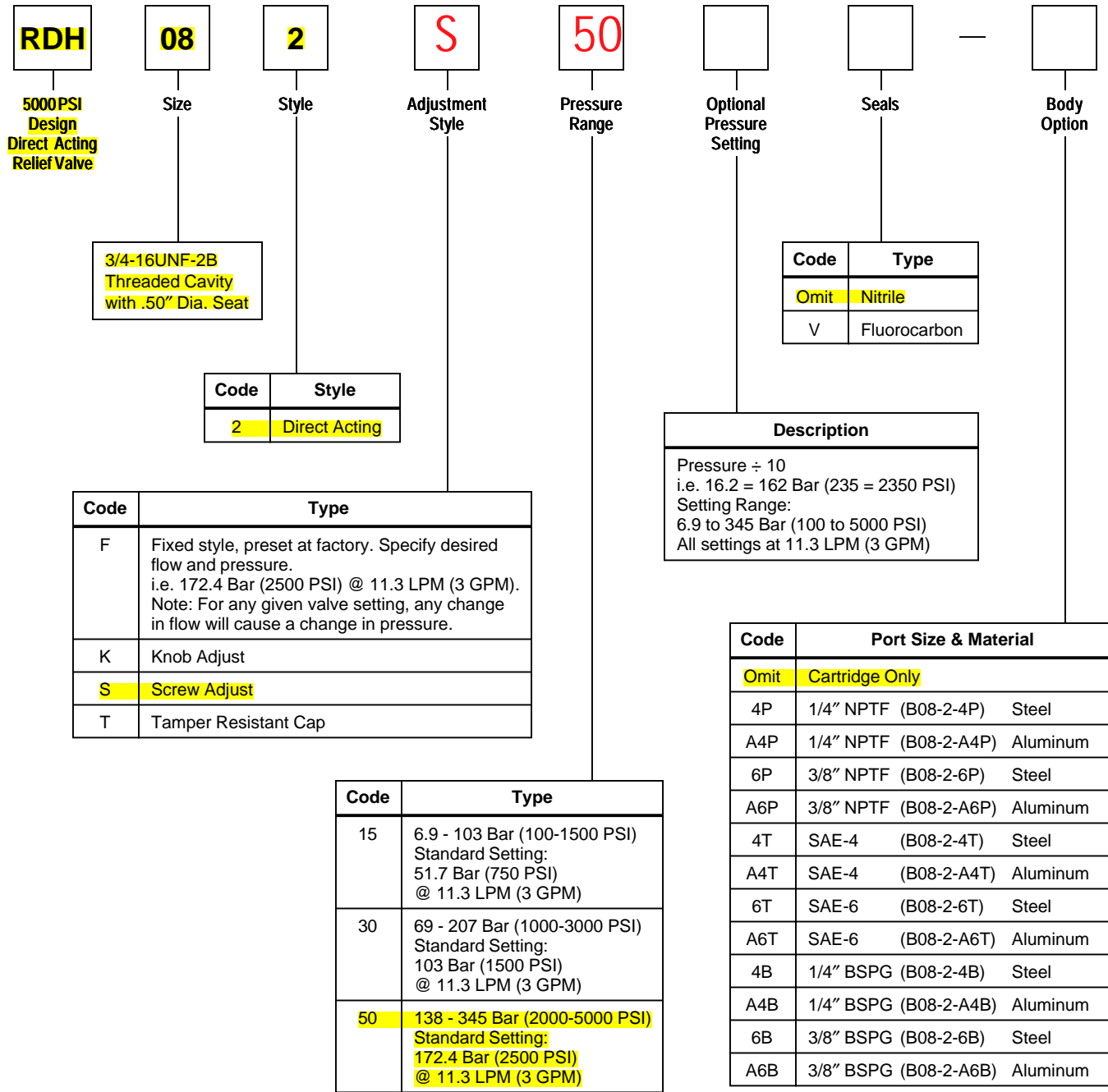
Screw/Knob Version



Fixed Cap/Tamper Resistant Version

Cartridge In Body





NOTE:
 If system pressure does not exceed 210 Bar (3000 PSI), aluminum bodies can be used. Higher pressures require steel bodies.

SERVICE PARTS
Knob Option: 852605 & 852634
 (To convert screw adjust to knob adjust)
Nitrile Seal Kit: SK08-2
Fluorocarbon Seal Kit: SK08-2V

Shipping Weight
 Cartridge Only .18 kg (.40 lbs.)
 Cartridge in Body .30 kg (.65 lbs.)