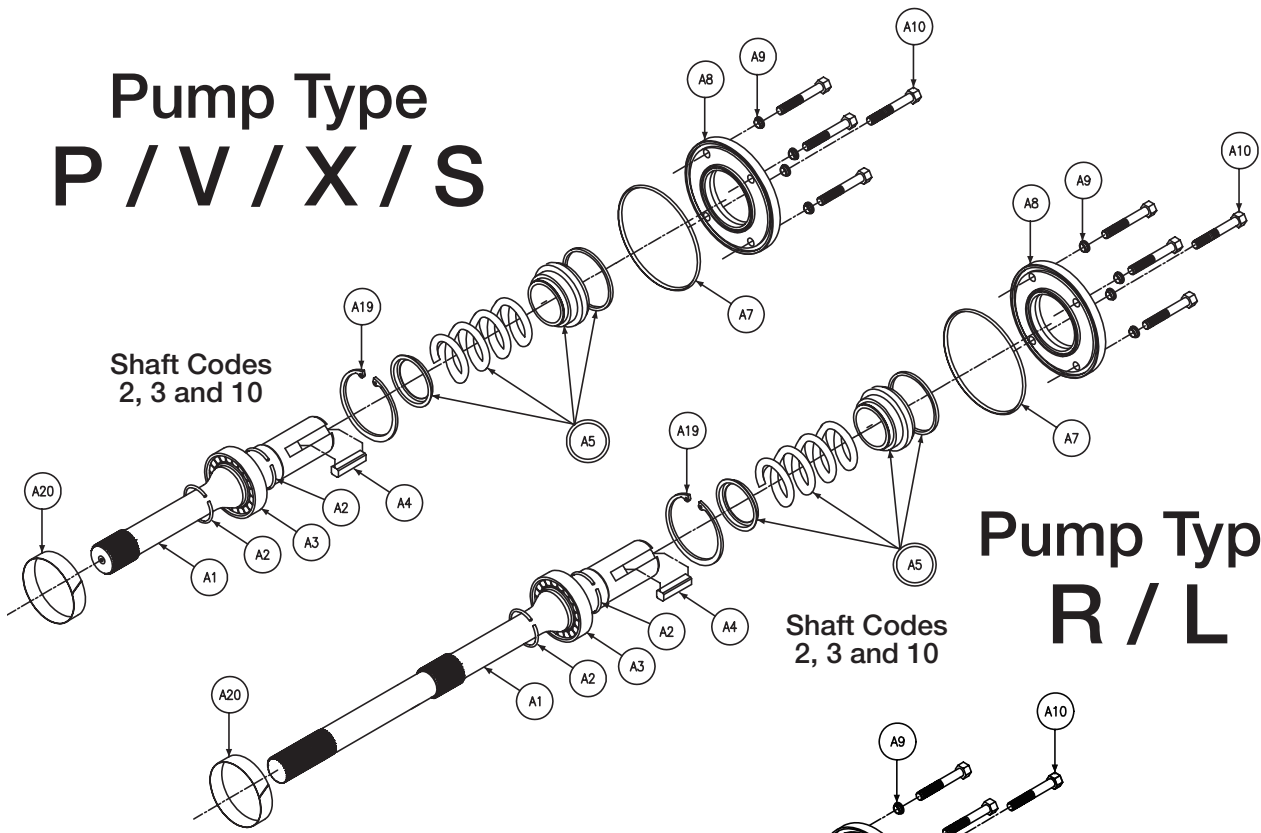
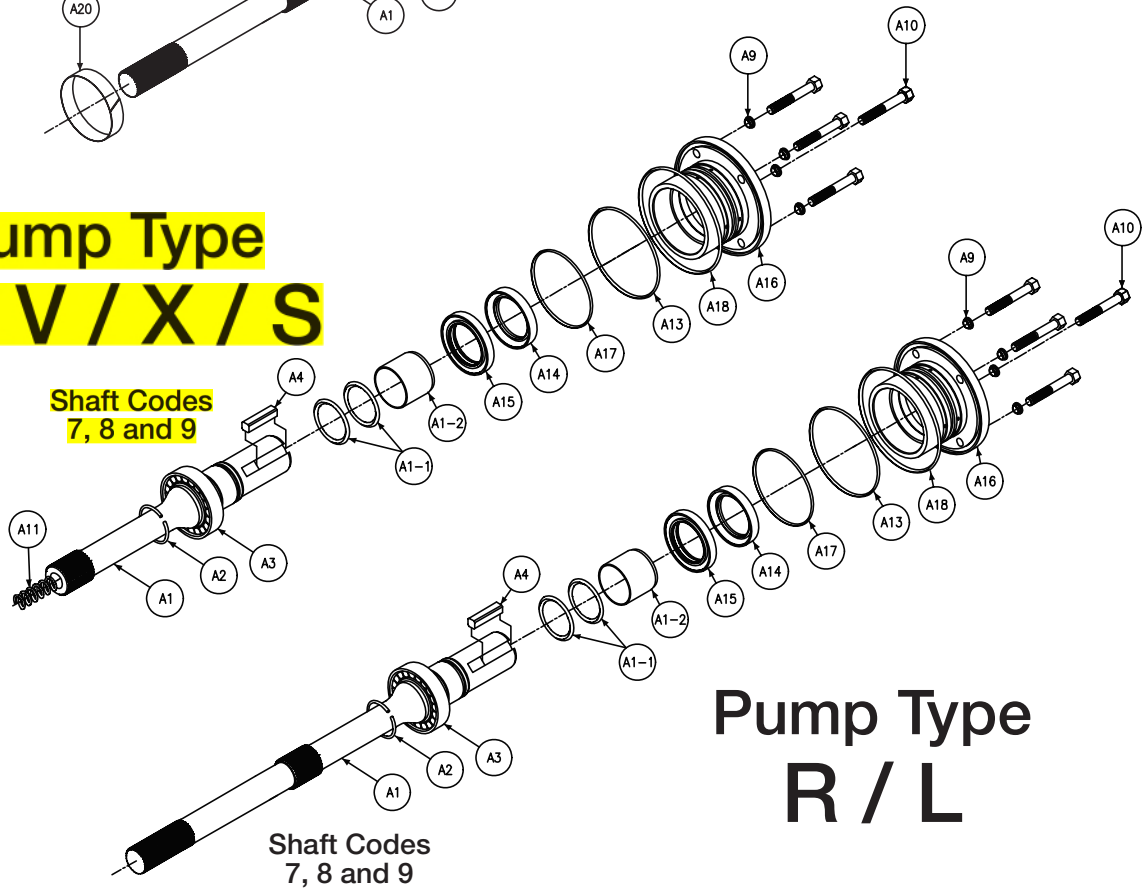


Pump Type P / V / X / S



Pump Type P / V / X / S



Section View - A - Input Shaft & Retainer Assembly

Section A							
P11/14 Input shaft and retainer							
Balloon #	Pump Type	Shaft Code	Rotation	Seal Code	Item #	Description	Qty
A1	P/N/X/S	2	**	**	033-71601-0	Shaft, Keyed	1
	P/N/X/S	3	**	**	033-71604-0	Shaft, Splined	
	P/N/X/S	7	**	**	* 033-94180-0	Shaft, Keyed	
	P/N/X/S	8	**	**	* 033-94181-0	Shaft, Splined	
	P/N/X/S	9	**	**	* 033-94220-0	Shaft, Keyed	
	P/N/X/S	10	**	**	033-93608-0	Shaft, Keyed	
	R/L	2	**	**	033-92617-0	Shaft, Keyed	
	R/L	3	**	**	033-92619-0	Shaft, Splined	
	R/L	7	**	**	* 033-94182-0	Shaft, Keyed	
	R/L	8	**	**	* 033-94183-0	Shaft, Splined	
R/L	9	**	**	* 033-94221-0	Shaft, Keyed		
R/L	10	**	**	033-93614-0	Shaft, Keyed		
A1-1	P/N/X/S/R/L	7/8/9	**	1	671-00131-0	Gasket O-ring	2
	P/N/X/S/R/L	7/8/9	**	4	674-00131-0		
	P/N/X/S/R/L	7/8/9	**	5	675-00131-0		
A1-2	P/N/X/S/R/L	7/8/9	**	**	033-94184-0	Sleeve, Shaft	1
A2	**	2/3/10	**	**	033-71641-0	Retaining ring	2
	**	7/8/9	**	**	033-59504-0		1
A3	**	2/3/10	**	**	230-82148-0	Shaft Bearing	1
	**	7/8/9	**	**	230-82214-0		
A4	**	2/7	**	**	033-71514-0	Key	1
	**	9/10	**	**	033-93618-0		
A5	**	2/3/10	**	1	623-00016-0	Shaft seal	1
	**	2/3/10	**	4	623-00016-4		
	**	2/3/10	**	5	623-00016-5		
A7	**	2/3/10	**	1	671-00249-0	Gasket O-ring	1
	**	2/3/10	**	4	674-00249-0		
	**	2/3/10	**	5	675-00249-0		
A8	**	2/3/10	**	**	033-57872-0	Seal retainer	1
A9	**	**	**	**	631-45007-0	Nyltite Gasket	4
A10	**	**	**	**	306-40021-0	Hex Hd cap screw	4
A11	P/N/X/S	7/8/9	**	**	033-91713-0	Pre load spring	1
A13	P/N/X/S/R/L	7/8/9	**	1	671-00044-0	Gasket O-ring	1
	P/N/X/S/R/L	7/8/9	**	4	674-00044-0		
	P/N/X/S/R/L	7/8/9	**	5	675-00044-0		
A14	P/N/X/S/R/L	7/8/9	CW	1	620-82104-0	Inner seal	1
	P/N/X/S/R/L	7/8/9	CCW	1	620-82105-0		
A15	P/N/X/S/R/L	7/8/9	**	1	620-82101-0	Outer Seal	1
	P/N/X/S/R/L	7/8/9	**	4	N/A		
	P/N/X/S/R/L	7/8/9	**	5	N/A		
A16	**	7/8/9	**	**	033-91709-0	Seal retainer	1
A17	**	7/8/9	**	1	671-00237-0	Gasket O-ring	1
	**	7/8/9	**	4	674-00237-0		
	**	7/8/9	**	5	675-00237-0		
A18	**	7/8/9	**	1	671-00251-0	Gasket O-ring	1
	**	7/8/9	**	4	674-00251-0		
	**	7/8/9	**	5	675-00251-0		
A19	**	2/3/10	**	**	356-65013-0	Retaining ring	1
A20	**	2/3/10	**	**	033-53984-0	Brg. shim, .007"	select fit 1 only
	**	2/3/10	**	**	033-53983-0	Brg. shim, .008"	

Note: Shaft part numbers marked with * are not usable without items A1-1 & A1-2, (o'rings and sleeve).

Section A Kits Listed on Next Page.



P11/14 Seal Kits			
Note: Seal kits for “M” mod pumps and for aux pumps require part number verification with HPD factory representatives. Seal Kit part numbers below contain all seals for the following items.			
1. Main pump			
2. Valve block			
3. Input/output controls			
4. shaft seal			
Shaft Code	Rotation	Seal code	Part number
2/3	**	1	S23-17032-0
2/3	**	4	S23-17032-4
2/3	**	5	S23-17032-5
7/8/9	CW	1	S23-17033-0
7/8/9	CW	4	S23-17033-4
7/8/9	CW	5	S23-17033-5
7/8/9	CCW	1	S23-17034-0
7/8/9	CCW	4	S23-17034-4
7/8/9	CCW	5	S23-17034-5

P11/14 Shaft and Bearing Assembly Kits		
Composed of Items: A1, A2, A3, A4, and A1-1, A1-2 for 7 / 8 / 9 shafts as applicable.		
Shaft Code	Pump Type	Part Number
2	P/V/X/S	S13-43969-0
3	P/V/X/S	S13-43968-0
7	P/V/X/S	S23-18182-0
8	P/V/X/S	S23-18183-0
9	P/V/X/S	S23-18268-0
10	P/V/X/S	S23-17489-0
2	R/L	S23-16255-0
3	R/L	S23-16257-0
7	R/L	S23-18184-0
8	R/L	S23-18185-0
9	R/L	S23-18269-0
10	R/L	S23-17495-0

P11/14 Shaft Sleeve and O’rings					
Replacement shaft sleeve & o’rings are available for P/V/X/S/R/L units with 7/8/9 shafts only. However, special tools are required to press old sleeve off and new sleeve on shaft. Reference tool drawing, 213-0-004203, see page 9 for drawing details.					
Pump Type	Shaft Code	Qty	Seal Code	Part Number	Description
P/V/X/S	7/8/9	2	1	671-00131-0	gasket o’ring
P/V/X/S			4	674-00131-0	
P/V/X/S			5	675-00131-0	
P/V/X/S	7	1	**	* 033-94180-0	* shaft
P/V/X/S	8	1	**	* 033-94181-0	
P/V/X/S	9	1	**	* 033-94220-0	
R/L	7	1	**	* 033-94182-0	* shaft
R/L	8	1	**	* 033-94183-0	
R/L	9	1	**	* 033-94221-0	
P/V/X/S	7	1	**	033-94184-0	shaft sleeve
P/V/X/S	8	1	**		
P/V/X/S	9	1	**		
Note: Shaft P/N’s marked with * are not usable without items A1-1 & A1-2, (o’rings and sleeve).					

P11/14 Shaft and Seal Retainer Assembly Kits				
Composed of Items: A1, A1-1, A1-2, A2, A3, A4, A9, A10, A13, A14, A15, A16, A17, & A18				
Shaft Code	Pump Type	Rotation	Seal Code	Part Number
7	P/V/X/S	CW	1	S23 -15219-0
8	P/V/X/S	CW	1	S23 -15923-0
9	P/V/X/S	CW	1	S23 -19502-0
7	P/V/X/S	CW	5	S23 -15219-5
8	P/V/X/S	CW	5	S23 -15923-5
9	P/V/X/S	CW	5	S23 -19502-5
7	P/V/X/S	CCW	1	S23 -15350-0
8	P/V/X/S	CCW	1	S23 -15891-0
9	P/V/X/S	CCW	1	S23 -19503-0
7	P/V/X/S	CCW	5	S23 -15350-5
8	P/V/X/S	CCW	5	S23 -15891-5
9	P/V/X/S	CCW	5	S23 -19503-5
7	R/L	CW	1	S23 -16807-0
8	R/L	CW	1	S23 -16805-0
9	R/L	CW	1	S23 -19504-0
7	R/L	CW	5	S23 -16807-5
8	R/L	CW	5	S23 -16805-5
9	R/L	CW	5	S23 -19504-5
7	R/L	CCW	1	S23 -16808-0
8	R/L	CCW	1	S23 -16806-0
9	R/L	CCW	1	S23 -19505-0
7	R/L	CCW	5	S23 -16808-5
8	R/L	CCW	5	S23 -16806-5
9	R/L	CCW	5	S23 -19505-5

P11/14 Seal retainer assembly kits				
Composed of Items: A14, A15 and A16				
Shaft Code	Pump Type	Rotation	Seal Code	Part Number
7/8/9	P/V/X/S/R/L	CW	1	S23-15215-0
7/8/9	P/V/X/S/R/L	CCW	1	S23-15217-0

