

Characteristics

The D1VL is a 3 chamber, D3DL, D4L and D9L are 5 chamber 4/3- or 4/2-way directional control valves.

The hand lever is directly connected to the spool and can be located either on the A or B side. Spring offset and detent designs are available.

2 Directional control valves with hand lever are available in 4 sizes:

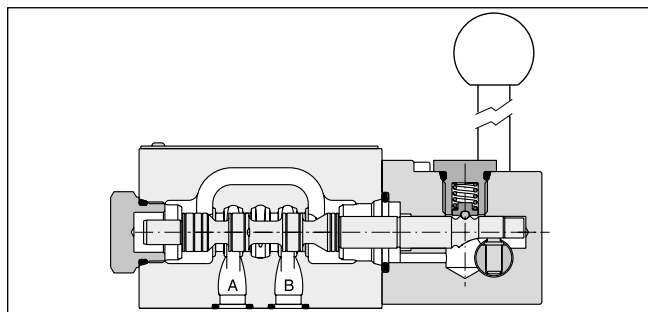
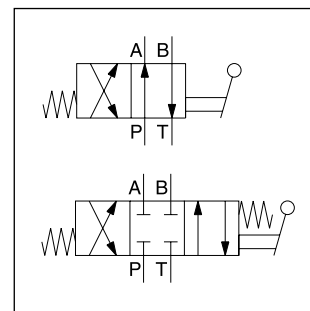
- D1VL NG06
- D3DL NG10
- D4L NG16
- D9L NG25

Features

- All hand lever parts stainless steel



D1VL



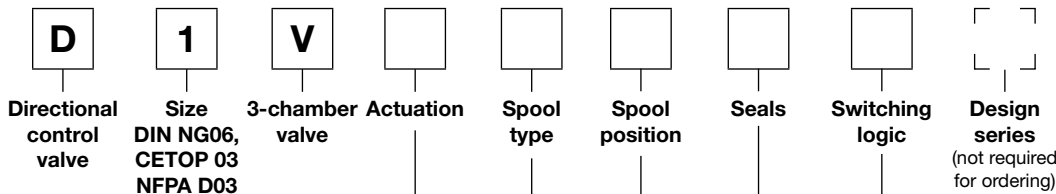
D1VL

Technical data

General				
Design	Directional spool valve			
Actuation	Lever			
Series	D1VL	D3DL	D4L	D9L
Size	NG06	NG10	NG16	NG25
Weight [kg]	1.4	3.7	9.0	17.0
Mounting interface	DIN 24340 A06	DIN 24340 A10	DIN 24340 A16	DIN 24340 A25
	ISO 4401	ISO 4401	ISO 4401	ISO 4401
	NFPA D03	NFPA D05	NFPA D07	NFPA D08
CETOP RP 121-H				
Mounting position	unrestricted, preferably horizontal			
Ambient temperature [°C]	-25...+60			
MTTF _p value [years]	150			
Hydraulic				
Max. operating pressure [bar]	P, A B: 350; T: 140	P, A B: 350; T: 140	external drain P, A B, T: 350; X, Y: 140	external drain P, A B, T: 350; X, Y: 140
			internal drain P, A B: 350; T, X, Y: 140	internal drain P, A B: 350; T, X, Y: 140
Fluid	Hydraulic oil according to DIN 51524			
Fluid temperature [°C]	-20 ... +70 (NBR: -25...+70)			
Viscosity permitted [cSt] / [mm ² /s]	2.8...400			
Viscosity recommended [cSt] / [mm ² /s]	30...80			
Filtration	ISO 4406 (1999); 18/16/13			
Flow max. [l/min]	80	130	300	700
Leakage at 350 bar (per flow path) [ml/min]	-	up to 100 ¹⁾	up to 200 ¹⁾	up to 800 ¹⁾
Leakage at 50 bar (per flow path) [ml/min]	up to 10 ¹⁾	-	-	-

¹⁾ Depending on spool.

Ordering Code



Code	Actuation
L	Hand lever side B
LB	Hand lever side A

Code	Switching logic
4J ²⁾	Center of rotation below spool axis (Parker style)
4K ²⁾	Center of rotation above spool axis (Denison style)

3 position spools	
Code	Spool type
001	
002	
004	
006	
009 ¹⁾	
042	

2 position spools	
Code	Spool type
020	

3 position spools		
Code	Spool position	
C		3 positions. Spring offset in position "0". Operated in position "a" or "b".
	Standard	Spool type 009
E		2 positions. Spring offset in position "0".
	Operated in position "a".	Operated in position "b".
K		2 positions. Spring offset in position "0".
	Operated in position "b".	Operated in position "a".
N		3 positions, detent. Operated in position "a", "0" or "b".
	No centre in offset position.	No centre in offset position.
R		2 positions, detent. Operated in position "0" or "b".
	No centre in offset position.	No centre in offset position.
S		2 positions, detent. Operated in position "0" or "a". No center in offset position.
	No centre in offset position.	No centre in offset position.

Code	Seals
N	NBR
V	FPM

2 position spools		
Code	Spool position	
B		Spring offset in position "b". Operated in position "a".
D		Detent, operated in position "a" or "b". No center or offset position.
H		Spring offset in position "a". Operated in position "b".

¹⁾ Consider specific spool position.
²⁾ Details see dimensions.

Bold letters =
Short-term availability

Further spool types on request.